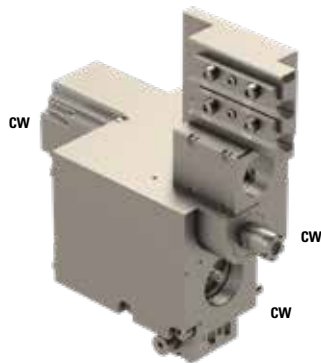
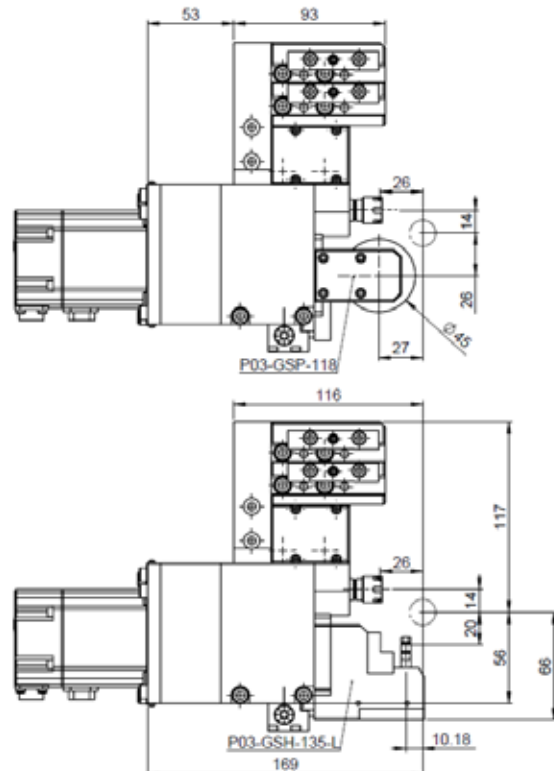
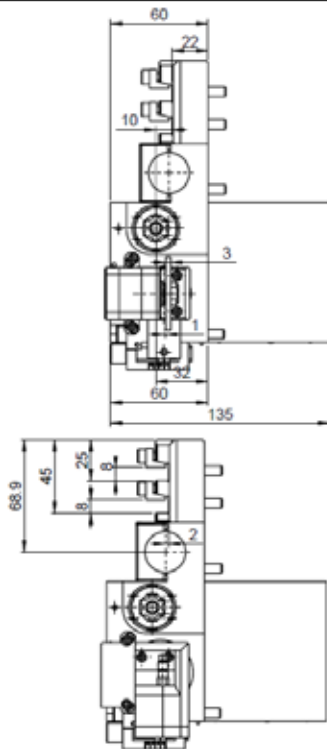


P03-GSC-117-S

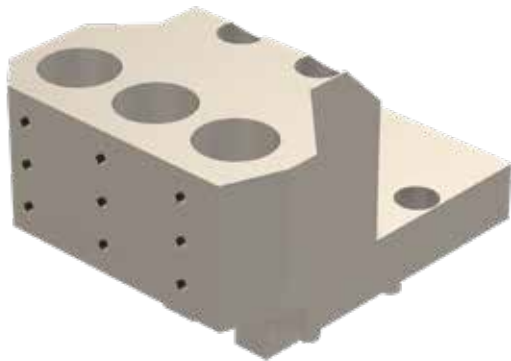


	ER11
	1:2
RPM max.	16'000
Machines Types	P034H
Note :	

Original main block is to replace by this tool. To adjust the offset please contact your local TSUGAMI dealer.
 Tool N°01 cutter carrier 8mm x 8mm
 Tool N°02 cutter carrier 8mm x 8mm
 Tool N°03 high frequency Ø25
 Tool N°04 in ER11 with RPM 16'000.
 Tool N°05 is a modular quick change for different operation.



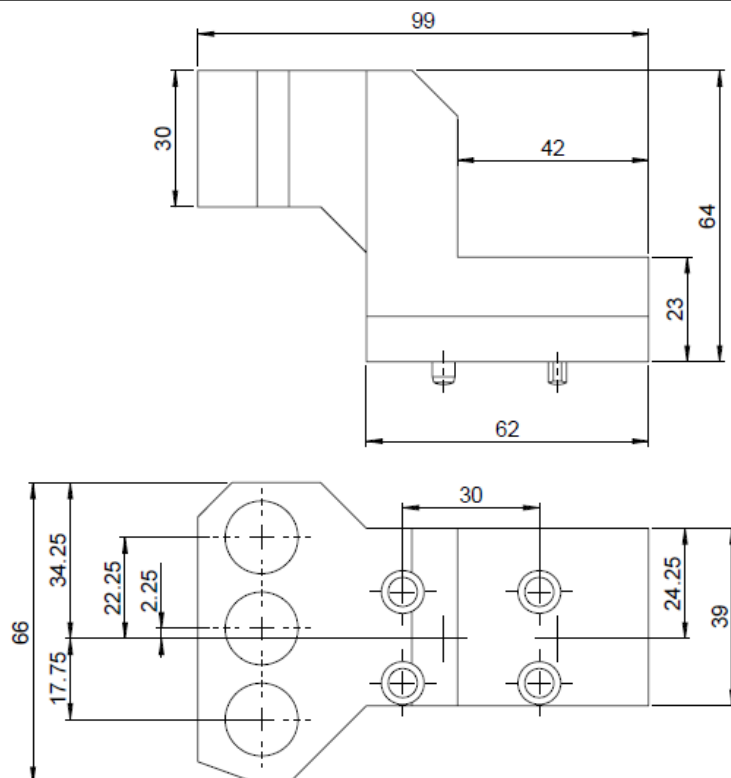
P03-GDF-416



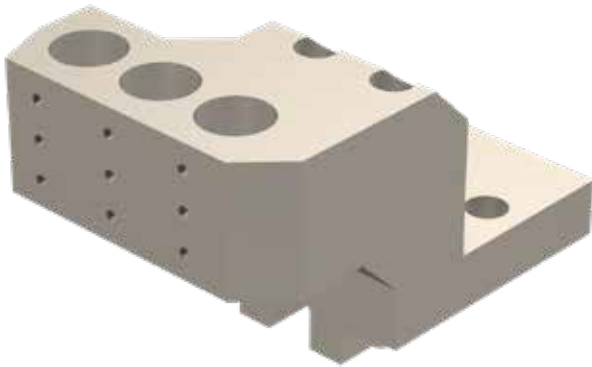
Ø 3x16

Machines Types P034H

Note :



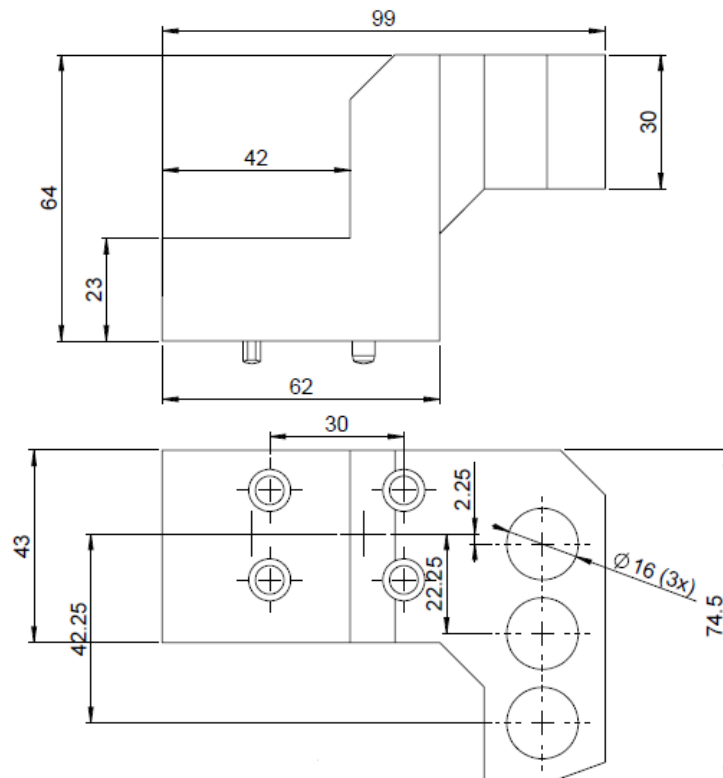
P03-GDF-516



Ø 3x16

Machines Types P034H

Note :



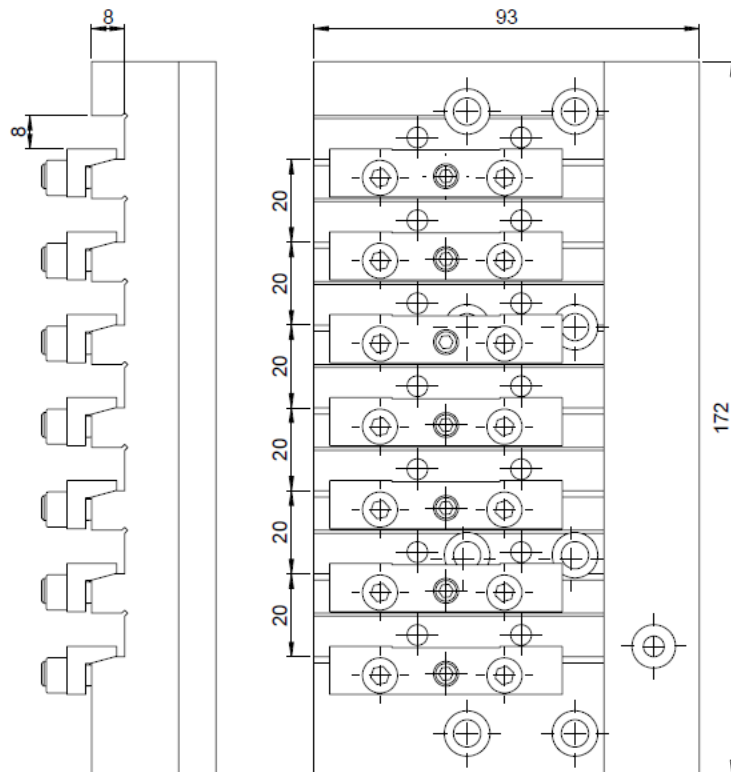
P03-GTF-018



7x(8x8)

Machines Types

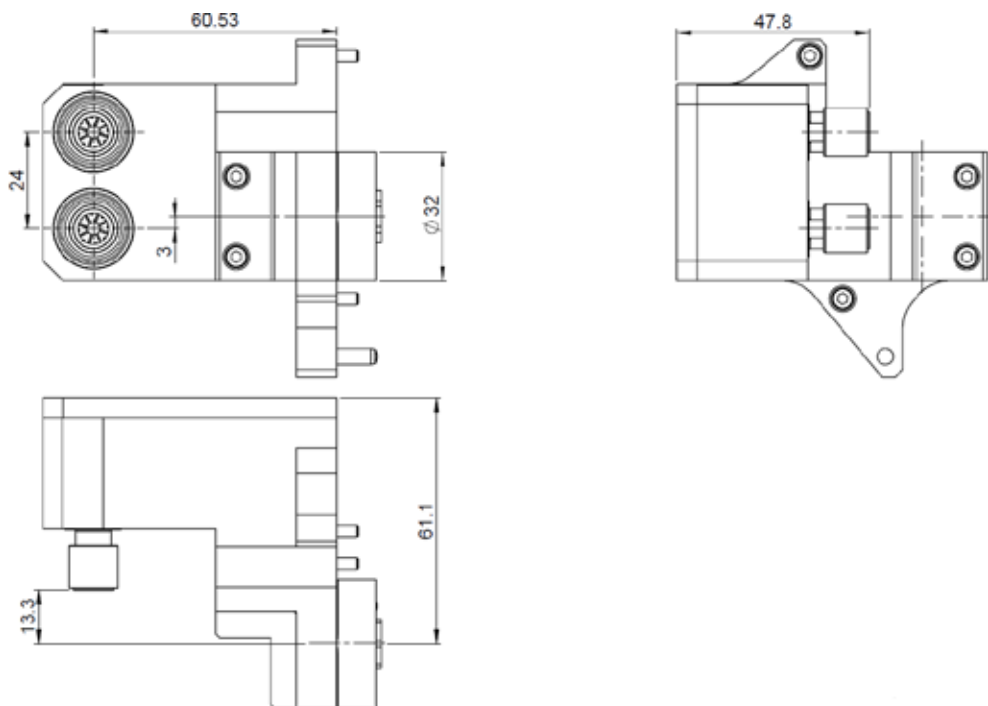
P034H

Note :

P03-GSE-207-II




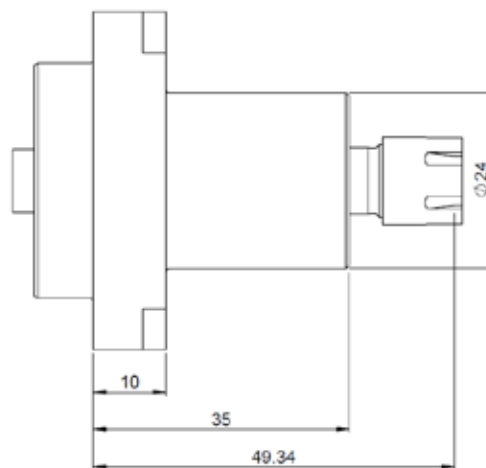
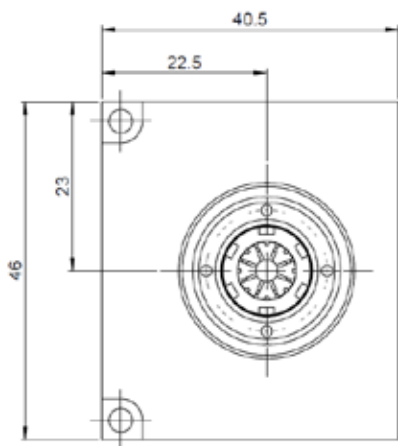
	2xER11
	1:1
RPM max.	8'000
Machines Types	P034H
Note :	



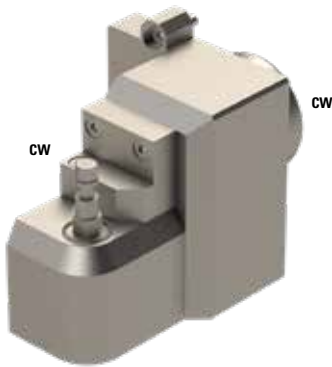
P03-GSC-015




	ER08
	1:1
RPM max.	8'000
Machines Types	P034H
Note :	



P03-GSH-135-L



 3.5

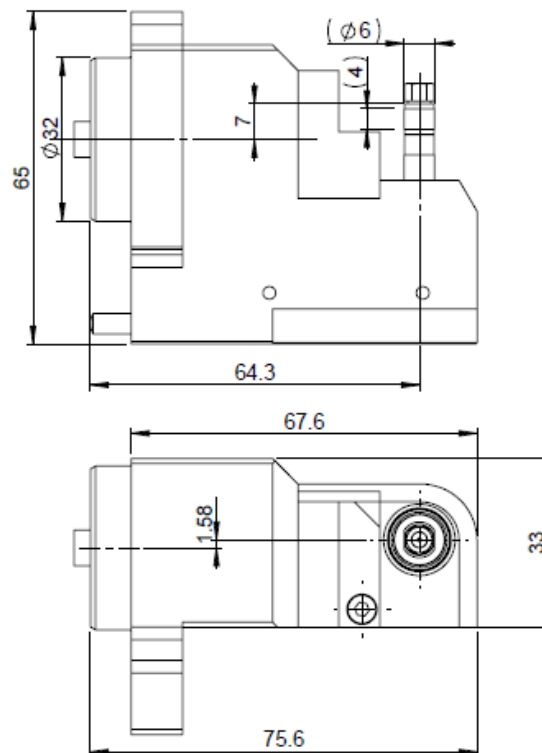
 1:1

RPM max. 8'000

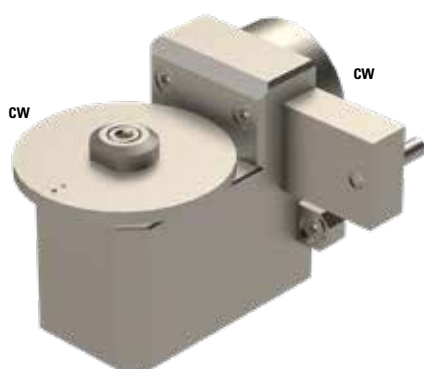
Machines Types P034H

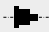
Note :

Adjustable $\pm 2.5^\circ$

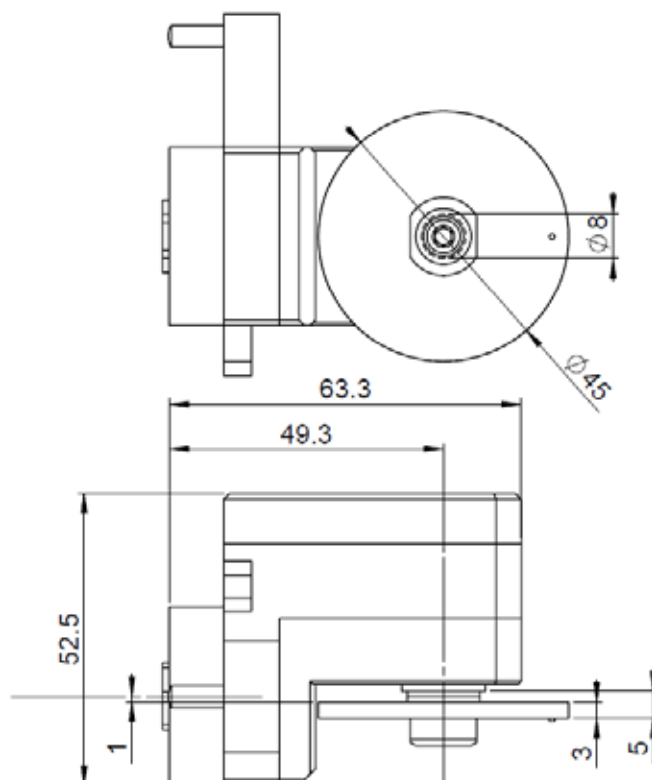


P03-GSP-118

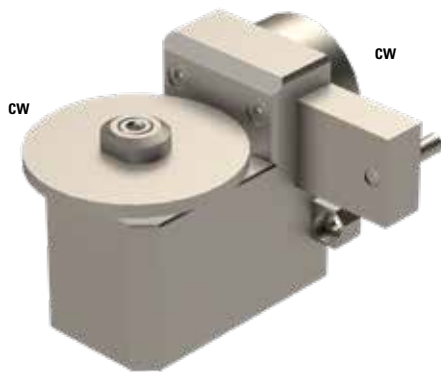



	8
	1:1
RPM max.	8'000
Machines Types	P034H
Note :	

Adjustable $\pm 2.5^\circ$
Max. tool $\varnothing 45$ mm



P03-GSP-218



 8

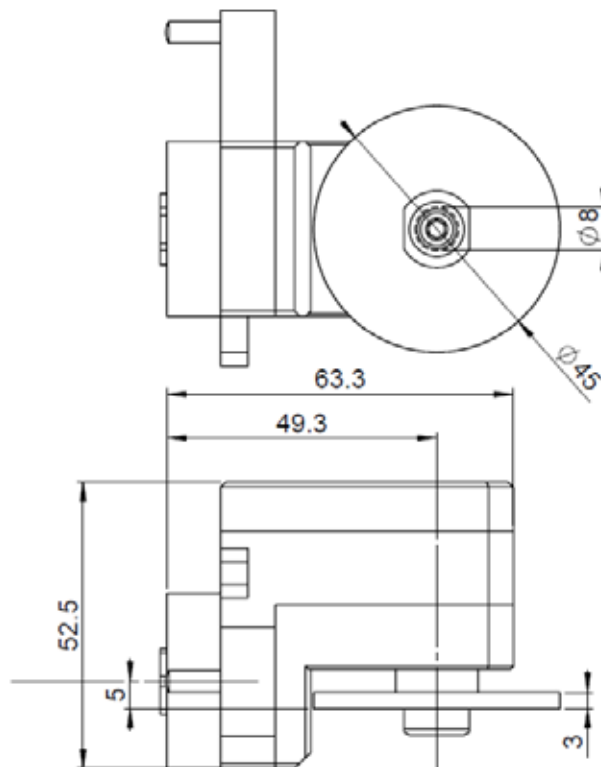
 1:1

RPM max. 8'000

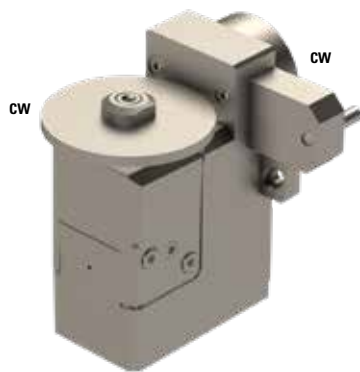
Machines Types P034H

Note :

Adjustable $\pm 2.5^\circ$
Max. tool $\varnothing 45$ mm
Cutter-saw has the same offset as the cutter carrier

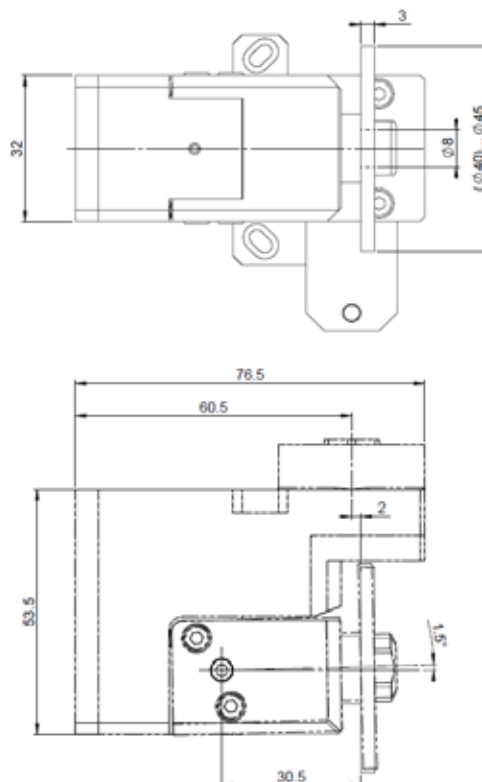


P03-GSP-318




	8
	1:1
RPM max.	8'000
Machines Types	P034H
Note :	

Adjustable in X $\pm 2.5^\circ$
 Adjustable in Y $\pm 1.5^\circ$
 Max. tool $\varnothing 45$ mm



P03-GSW-220



 -

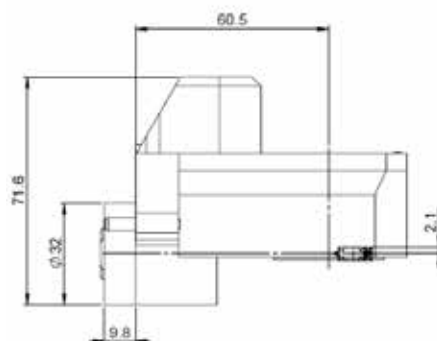
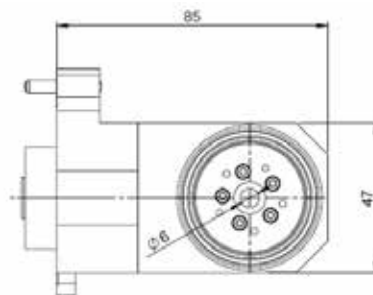
 1:1

RPM max. 8'000

Machines Types P034H


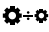
Note :

Adjustable 0°-20°



BW20-GSC-105-4X



	ER08
	1:3.8
RPM max.	30'400
Machines Types	BW207 BW208 BW208Z BW209Z


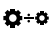
Note :

Cross drilling/milling
Gang tool T01, T02, T11, T12
Main spindle
Speeder



B07-GSC-107-4X



	ER11
	1:3.8
RPM max.	22'800
Machines Types	B073 - III, B074 - III, B0123 - III, B0124 - III, B0203 - III, B0204 - III, B075 - III, B0125 - III, B0126 - III, B0205 - III, B0206 - III


Note :

Cross drilling/milling
Gangtool, T01
Main Spindle
Speeder



B07-GSC-105-4X



 ER8

 1:3.8

RPM max. 22'800

Machines Types

B073 - III, B074 - III,
B0123 - III, B0124 - III,
B0203 - III, B0204 - III,
B075 - III, B0125 - III,
B0126 - III, B0205 - III,
B0206 - III,


Note :

Cross drilling/milling
Gangtool, T01
Main Spindle
Speeder



B07-GSC-110



 ER16

 1:1

RPM max. 8'000

Machines Types

B073 - III, B074 - III,
B0123 - III, B0124 - III,
B0203 - III, B0204 - III,
B075 - III, B0125 - III,
B0126 - III, B0205 - III,
B0206 - III


Note :

Cross drilling/milling
Gangtool, T01
Main Spindle



B026-GSC-105-4X



	ER8
---	-----

	1:3.8
---	-------

RPM max.	22'800
-----------------	--------

Machines Types	B0265 II, B0265B II, B0325 II, B0325B II, B0266 II, 0326 II
-----------------------	---


Note :

Cross drilling/milling
Gangtool, T11 - T15
Main Spindle
Speeder



B026-GSC-107-4X



	ER11
---	------

	1:3.8
---	-------

RPM max.	22'800
-----------------	--------

Machines Types	B0265 II, B0265B II, B0325 II, B0325B II, B0266 II, 0326 II
-----------------------	---


Note :

Cross drilling/milling
Gangtool, T11 - T15
Main Spindle
Speeder



B026-GSC-107-3X



 ER11

 1:3

RPM max. 15'000

Machines Types

B0265 II, B0265B II,
B0325 II, B0325B II,
B0266 II, 0326 II


Note :

Cross drilling/milling
Gangtool, T11-T15
Main Spindle
Speeder



B026-BSC-110-HP



 ER11

 1:1

RPM max. 8'000

Machines Types

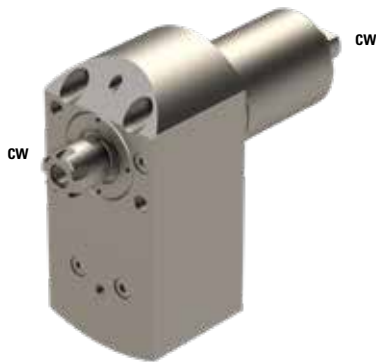
B0265 II, B0265B II,
B0325 II, B0325B II,
B0266 II, 0326 II

Note :

Cross drilling/milling
Gangtool, T11 - T15
Main Spindle
Coolant through spindle



S20-RSC-107-3X




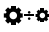
	ER11
	1:3
RPM max.	24'000
Machines Types	S205, S206
Note :	

Cross drilling/milling
 Gangtool T31 - T34
 Need 2 tool position (T35 - T38)
 Main Spindle
 Speeder



HS20-GSC-107-3X-II

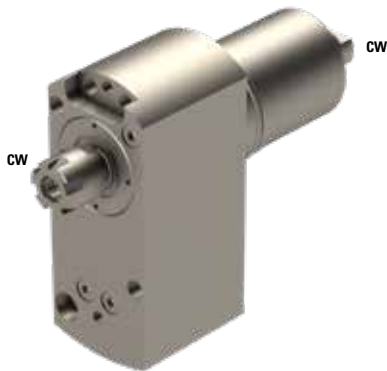


	ER11
	1:3
RPM max.	15'000
Machines Types	SS20, SS32, HS20, HS32
Note :	

Cross drilling/milling
 Gangtool, T01, T02, T11-T15
 Main Spindle
 Speeder



S20-RSE-107-3X




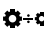
	ER11
	1:3
RPM max.	24'000
Machines Types	S205, S206
Note :	

Face drilling/milling
Back tool post T31 - T34
Need 2 tool position (T35 - T38)
Back Spindle
Speeder



HS20-GSE-107-3X-II

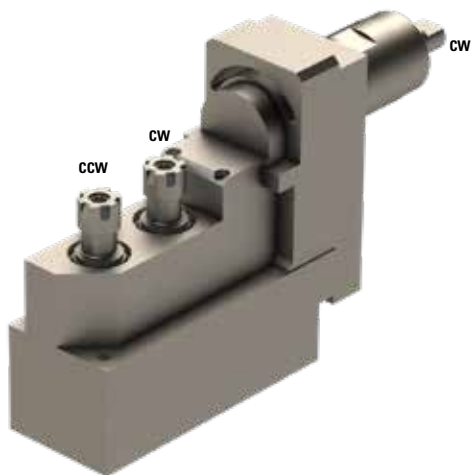


	ER11
	1:3
RPM max.	15'000
Machines Types	SS20, SS32, HS20, HS32
Note :	

Face drilling/milling
Back tool post T31 - T34
Need 2 tool position (T35 - T38)
Back Spindle
Speeder



B07-RSE-207



2x ER11



1:1

RPM max.

8'000

Machines Types

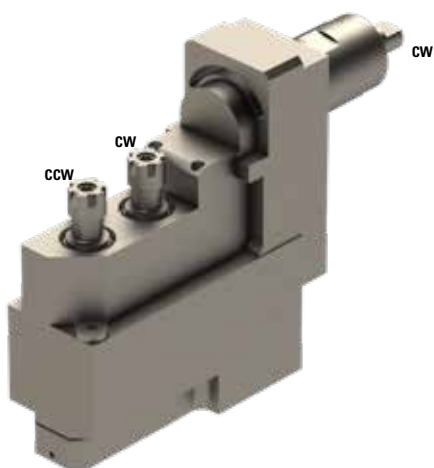
B073 - III, B074 - III,
 B0123 - III, B0124 - III,
 B0203 - III, B0204 - III,
 B075 - III, B0125 - III,
 B0126 - III, B0205 - III,
 B0206 - III

Note :

Face drilling/milling
 Gangtool, T01
 Main spindle



B07-RSE-207-IK



2x ER11



1:1

RPM max.

8'000

Machines Types

B073 - III, B074 - III,
 B0123 - III, B0124 - III,
 B0203 - III, B0204 - III,
 B075 - III, B0125 - III,
 B0126 - III, B0205 - III,
 B0206 - III

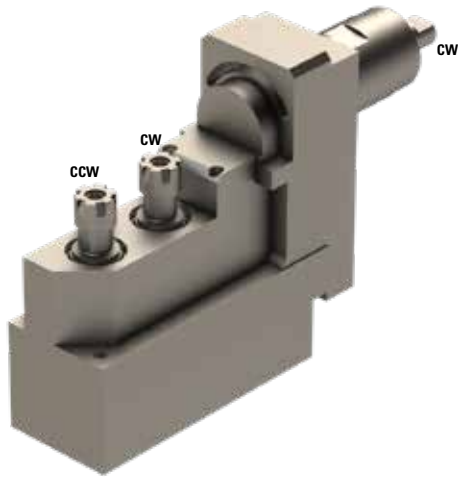
Note :

Face drilling/milling
 Gangtool, T01
 Main spindle
 Coolant through spindle



INT

B07-RSE-207-2X



2x ER11



1:2

RPM max.

16'000

Machines Types

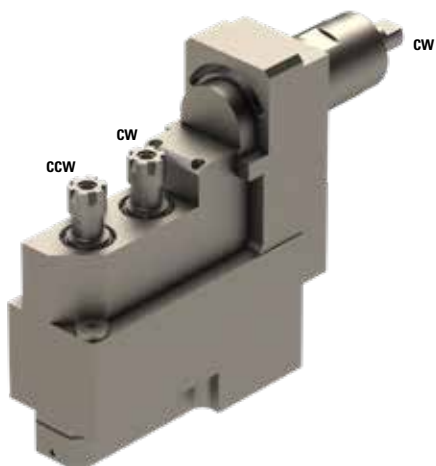
B073 - III, B074 - III,
B0123 - III, B0124 - III,
B0203 - III, B0204 - III,
B075 - III, B0125 - III,
B0126 - III, B0205 - III,
B0206 - III

Note :

Face drilling/milling
Gangtool, T01
Main spindle
Speeder



B07-RSE-207-IK-2X



2x ER11



1:2

RPM max.

16'000

Machines Types

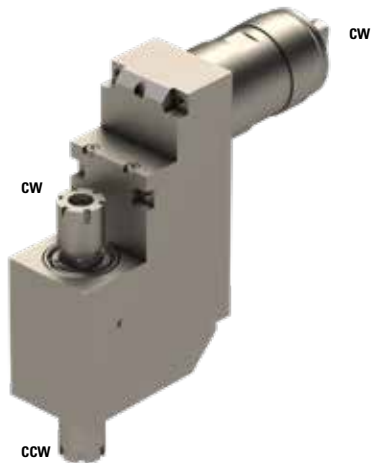
B073 - III, B074 - III,
B0123 - III, B0124 - III,
B0203 - III, B0204 - III,
B075 - III, B0125 - III,
B0126 - III, B0205 - III,
B0206 - III


Note :

Face drilling/milling
Gangtool, T01
Main spindle
Speeder
Coolant through spindle



B026-RSE-110



	2x ER16
---	---------

	1:1
---	-----

RPM max.	8'000
-----------------	-------

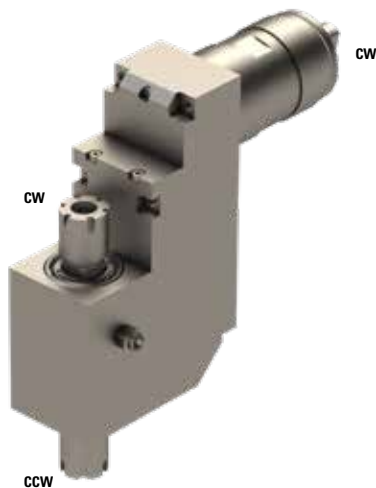
Machines Types	BO26, BO32, BO38
-----------------------	------------------


Note :

Face drilling/milling
Gangtool, T11
Main and back spindle



B026-RSE-110-IK



	2x ER16
---	---------

	1:1
---	-----

RPM max.	8'000
-----------------	-------

Machines Types	BO26, BO32, BO38
-----------------------	------------------


Note :

Face drilling/milling
Gangtool, T11
Main and back spindle
Coolant through spindle



B026-RSE-110M



 ER16

 1:1

RPM max. 8'000

Machines Types BO26, BO32, BO38


Note :

Face drilling/milling
Gangtool, T11
Main spindle



B026-RSE-110M-IK



 ER16

 1:1

RPM max. 8'000

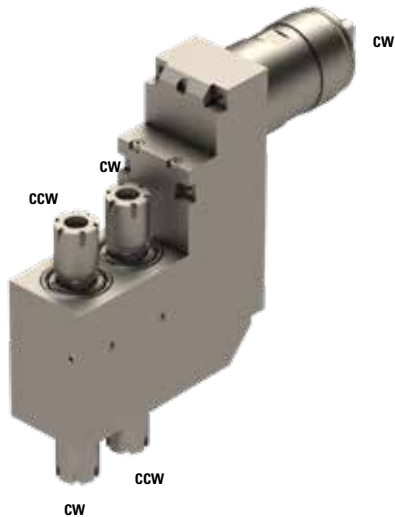
Machines Types BO26, BO32, BO38


Note :

Face drilling/milling
Gangtool, T11
Main spindle
Coolant through spindle



B026-RSE-210



 2x 2x ER16

 1:1

RPM max. 8'000

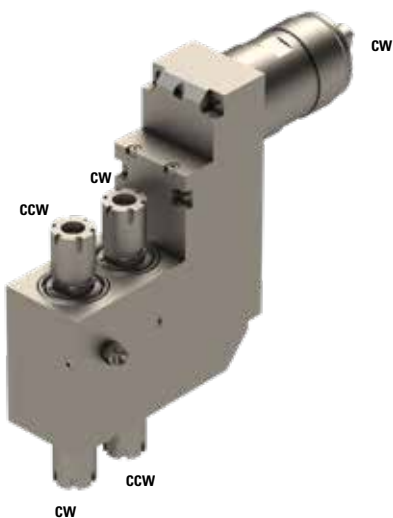
Machines Types BO26, BO32, BO38


Note :

Face drilling/milling
Gangtool, T11
Main and back spindle



B026-RSE-210-IK



 2x 2x ER16

 1:1

RPM max. 8'000

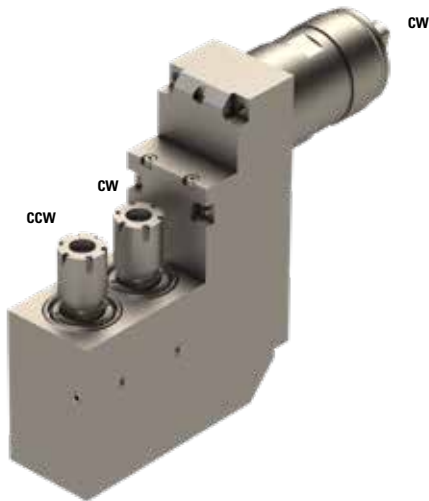
Machines Types BO26, BO32, BO38


Note :

Face drilling/milling
Gangtool, T11
Main and back spindle
Coolant through spindle



BO26-RSE-210M



 2x ER16

 1:1

RPM max. 8'000

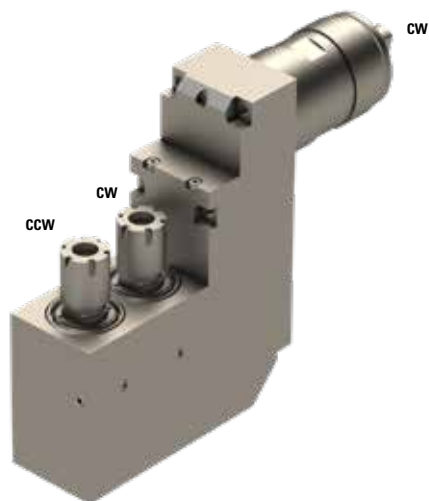
Machines Types BO26, BO32, BO38


Note :


Face drilling/milling
Gangtool, T11
Main spindle



BO26-RSE-210M-IK



 2x ER16

 1:1

RPM max. 8'000

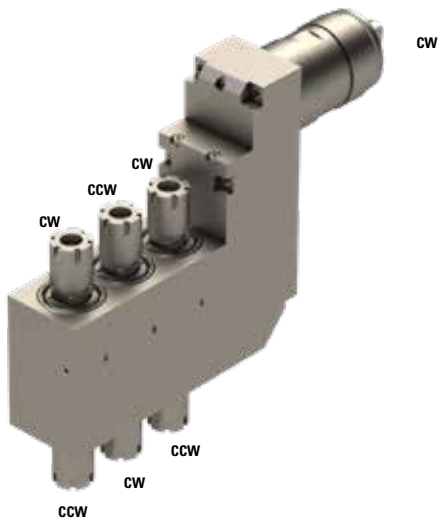
Machines Types BO26, BO32, BO38


Note :

Face drilling/milling
Gangtool, T11
Main spindle
Coolant through spindle



B026-RSE-310



 3x 2x ER16

 1:1

RPM max. 8'000

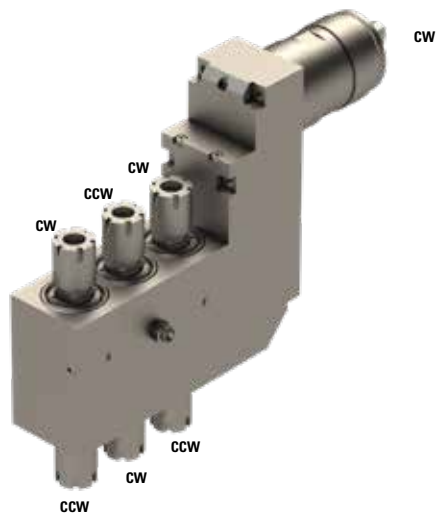
Machines Types BO26, BO32, BO38


Note :

Face drilling/milling
Gangtool, T11
Main and back spindle



B026-RSE-310-IK



 3x 2x ER16

 1:1

RPM max. 8'000

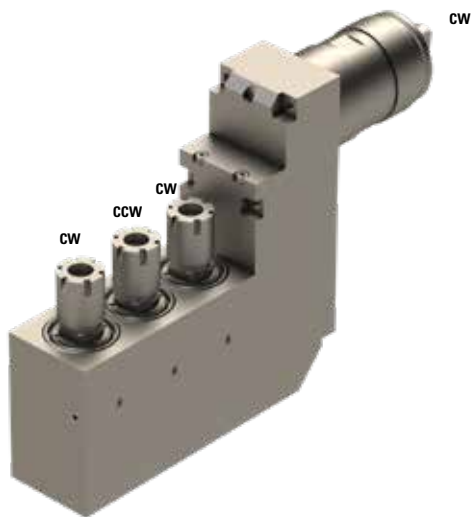
Machines Types BO26, BO32, BO38


Note :

Face drilling/milling
Gangtool, T11
Main and back spindle
Coolant through spindle



B026-RSE-310M



 3x ER16

 1:1

RPM max. 8'000

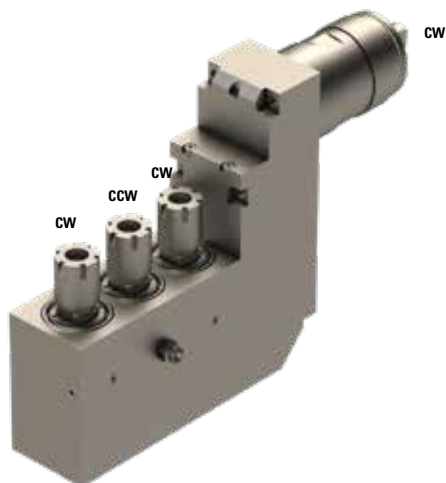
Machines Types BO26, BO32, BO38


Note :

Face drilling/milling
Gangtool, T11
Main spindle



B026-RSE-310M-IK



 3x ER16

 1:1

RPM max. 8'000

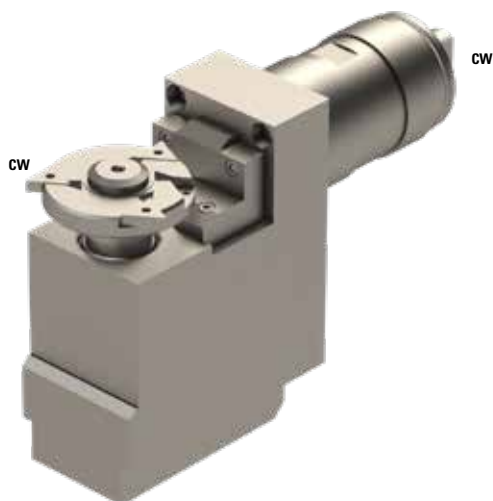
Machines Types BO26, BO32, BO38


Note :

Face drilling/milling
Gangtool, T11
Main spindle
Coolant through spindle



HS20-GSP-613

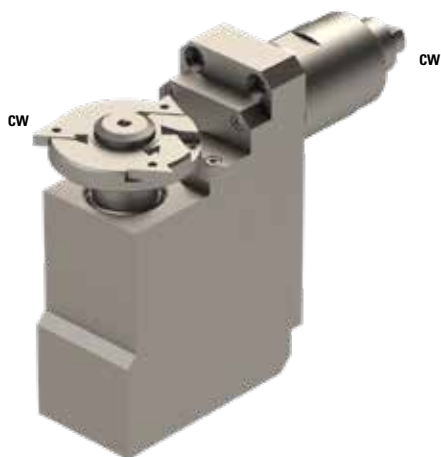



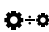
	13
	1:1
RPM max.	5'000
Machines Types	SS20, SS32, HS20, HS32
Note :	

Polygon cutting
 Gangtool, T01, T02, T11-T15
 Main Spindle
 Max. tool Ø72 mm
 Max. thickness 8.3 mm



S20-GSP-613

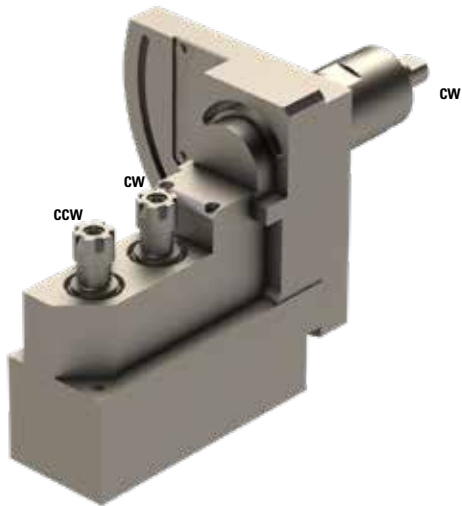



	13
	1:1
RPM max.	8'000
Machines Types	S205, S206
Note :	

Polygon cutting
 Gangtool, T11, T13
 Main Spindle
 Max. tool Ø72 mm
 Max. thickness 8.3 mm



B07-GSA-207



 2x ER11

 1:1

RPM max. 8'000

Machines Types

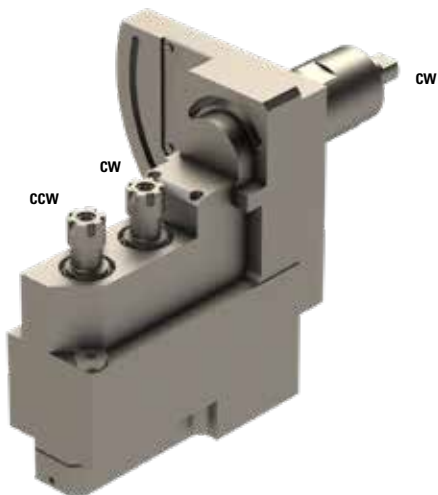
B073 - III, B074 - III,
 B0123 - III, B0124 - III,
 B0203 - III, B0204 - III,
 B075 - III, B0125 - III,
 B0126 - III, B0205 - III,
 B0206 - III


Note :

Face, cross & angular drilling/milling
 Gangtool, T01
 Main spindle
 Inclination : 90°



B07-GSA-207-IK



 2x ER11

 1:1

RPM max. 8'000

Machines Types

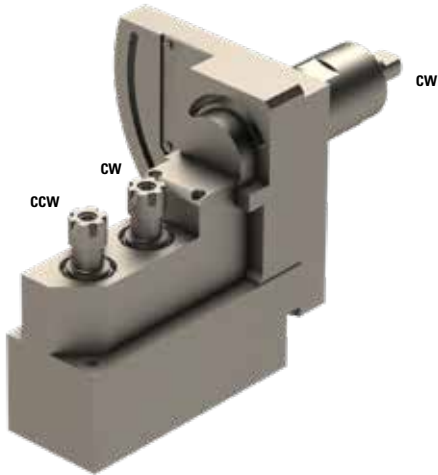
B073 - III, B074 - III,
 B0123 - III, B0124 - III,
 B0203 - III, B0204 - III,
 B075 - III, B0125 - III,
 B0126 - III, B0205 - III,
 B0206 - III


Note :


Face, cross & angular drilling/milling
 Gangtool, T01
 Main spindle
 Coolant through spindle
 Inclination : 90°



B07-GSA-207-2X



 2x ER11

 1:2

RPM max. 16'000

Machines Types

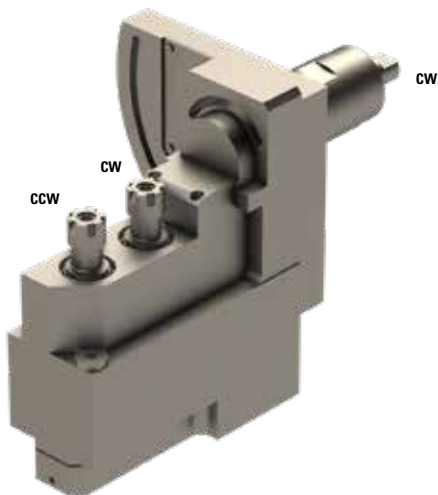
B073 - III, B074 - III,
B0123 - III, B0124 - III,
B0203 - III, B0204 - III,
B075 - III, B0125 - III,
B0126 - III, B0205 - III,
B0206 - III


Note :

Face, cross & angular drilling/milling
Gangtool, T01
Speeder
Main spindle
Inclination : 90°



B07-GSA-207-IK-2X



 2x ER11

 1:2

RPM max. 16'000

Machines Types

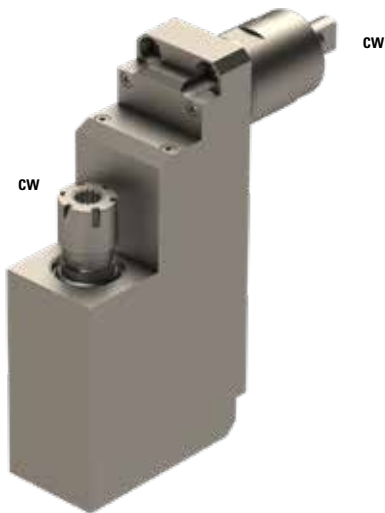
B073 - III, B074 - III,
B0123 - III, B0124 - III,
B0203 - III, B0204 - III,
B075 - III, B0125 - III,
B0126 - III, B0205 - III,
B0206 - III

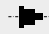
Note :

Face, cross & angular drilling/milling
Gangtool, T01
Main spindle
Speeder
Coolant through spindle
Inclination : 90°



B07-GSS-110



 ER16

 1:1

RPM max. 8'000

Machines Types

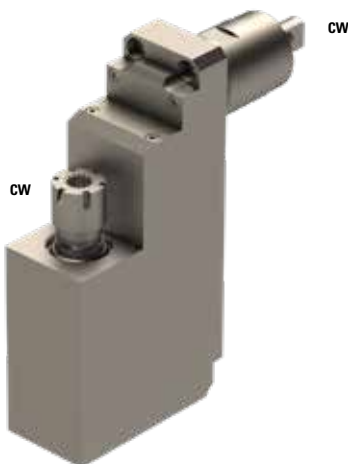
B073 - III, B074 - III,
B0123 - III, B0124 - III,
B0203 - III, B0204 - III,
B075 - III, B0125 - III,
B0126 - III, B0205 - III,
B0206 - III


Note :

Slitting
Gangtool, T01
Main Spindle
Milling cutter $\varnothing_{max}=70mm$
Driven toolholder for slitting or face drilling / milling



S20-RSS-110



 ER16

 1:1

RPM max. 8'000

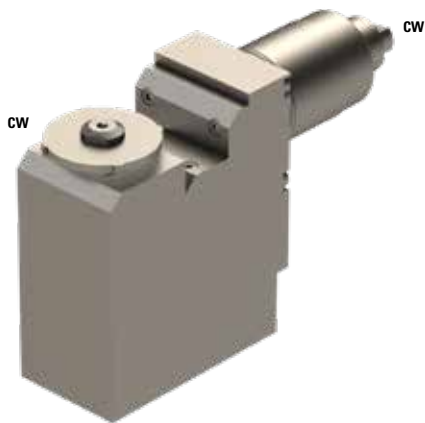
Machines Types S205, S206


Note :

Slitting
Gangtool, T11, T13
Main Spindle
Driven toolholder for slitting or face drilling / milling
Milling cutter $\varnothing_{max}=70mm$



B07-GSF-418



	8 mm
---	------

	1:1
---	-----

RPM max.	8'000
-----------------	-------

Machines Types

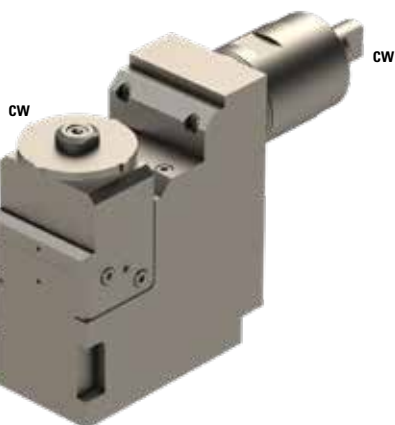
B073 - III, B074 - III,
B0123 - III, B0124 - III,
B0203 - III, B0204 - III,
B075 - III, B0125 - III,
B0126 - III, B0205 - III,
B0206 - III


Note :

Gangtool, T01
Main Spindle
Driven toolholder for thread milling
Milling cutters, $\varnothing_{max}=72\text{mm}$, Width= L = 3-5 mm
Line of cutting in 1mm of the spindle



B07-GSF-518



	8 mm
---	------

	1:1
---	-----

RPM max.	8'000
-----------------	-------

Machines Types

B073 - III, B074 - III,
B0123 - III, B0124 - III,
B0203 - III, B0204 - III,
B075 - III, B0125 - III,
B0126 - III, B0205 - III,
B0206 - III

Note :

Gangtool, T01
Main Spindle
Driven toolholder for thread milling
Milling cutters, $\varnothing_{max}=72\text{mm}$, Width= L = 3-5 mm
Line of cutting in 1mm of the spindle
Slope 0...1.5°



TSUGAMI1-GSW-220



∅ -

⚙️+⚙️ 1:1

RPM max. 8'000

Machines Types S205, S206

Note :

Adjustable $\pm 20^\circ$
Main Spindle
1 PCM cutterhead included:
- GSW-220-FPGLO Z=5, $\varnothing 6$ mm
- GSW-220-FPSWG Z=5, $\varnothing 6$ mm
- GSW-220-FPSWG-II Z=5, $\varnothing 6$ mm
Basis TSUGAMI1-PCR
Head GSW-220

Inserts are not included

