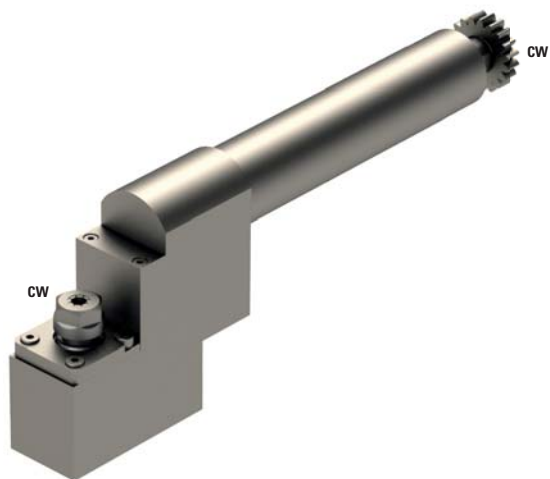



GSE-306-L-520



	ER11
---	------

	1:1
---	-----

RPM max.	6'000
----------	-------

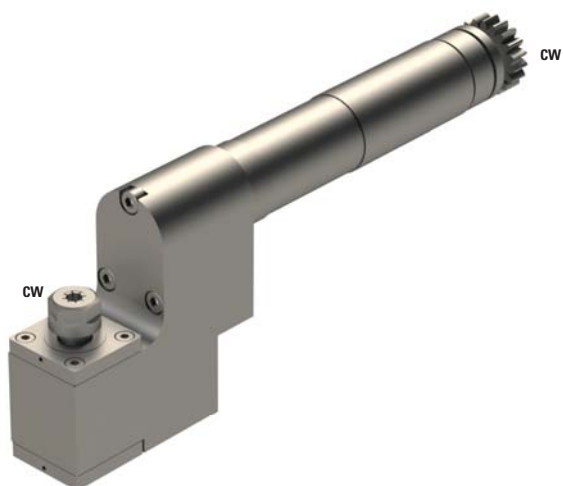
Machines Types	M220-V
	M232-III
	L20V
	M232-V
	L20VII
	M320-III
	L20VIII
	M320-V
L20X	
M332-III	
M220-III	
M332-V	
M32-4M5	
M32-4M8	

Note :

Position T08-T10



GSE-306-SE312



	ER11
---	------

	1:3
---	-----

RPM max.	18'000
----------	--------

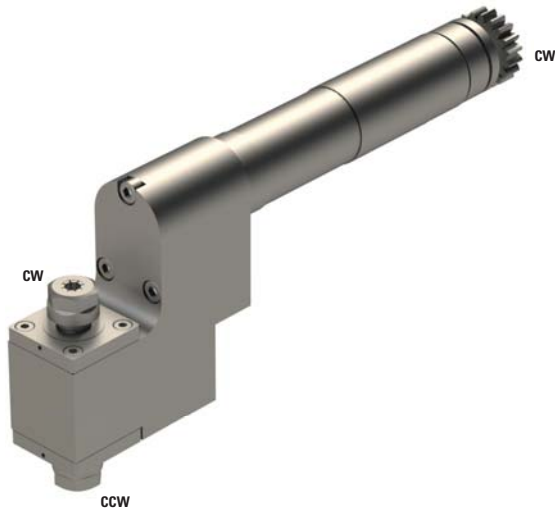
Machines Types	L20E-2M8	M220-V
	L20E-2M10	M232-III
	L20E-2M12	M232-V
	L20E-IX	M320-III
	L20V	M320-V
	L20VII	M332-III
	L20VIII	M332-V
	L20X	M32-4M5
	M220-III	M32-4M8


Note :

Position T08-T10



GSE-306-DE312



	2xER11
---	--------

	1:3
---	-----

RPM max.	18'000
----------	--------

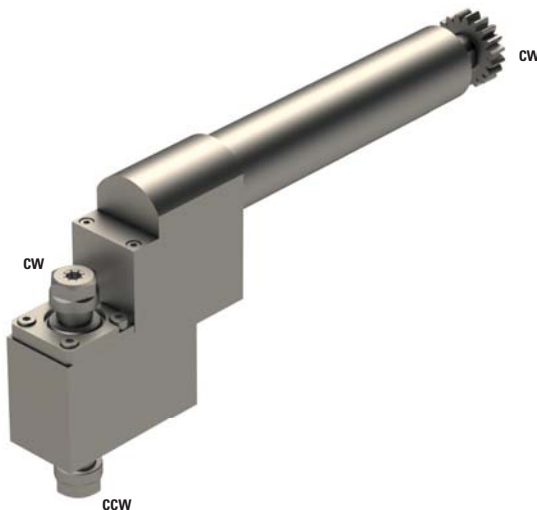
Machines Types	L20E2M8	M220-V
	L20E2M10	M232-III
	L20E-1M12	M232-V
	L20E-IX	M320-III
	L20V	M320-V
	L20VII	M332-III
	L20VIII	M332-V
	L20X	M32-4M5
	M220-III	M32-4M8


Note :

Position T08-T10



GSE-306-DE011



	2xER11
---	--------

	1:1
---	-----

RPM max.	6'000
----------	-------

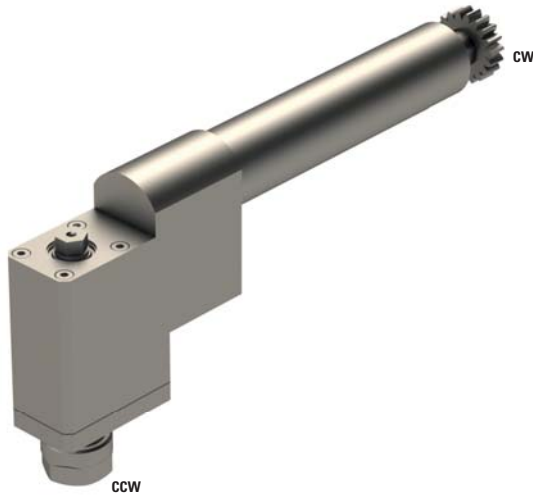
Machines Types	L20E2M8	M220-V
	L20E2M10	M232-III
	L20E-1M12	M232-V
	L20E-IX	M320-III
	L20V	M320-V
	L20VII	M332-III
	L20VIII	M332-V
	L20X	M32-4M5
	M220-III	M32-4M8


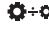
Note :

Position T08-T10



GSE-316-GS



	ER16
	1:1
RPM max.	6'000

Machines Types

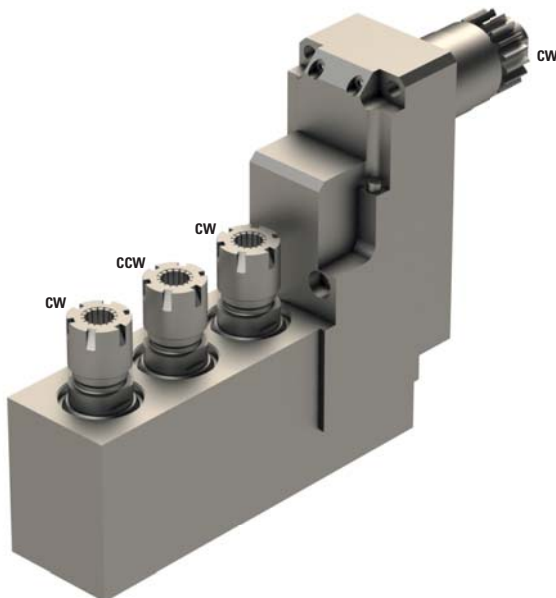
L20E2M8
L20E2M10
L20E-1M12
L20E-IX
L20V
L20VII
L20VIII
L20X
M32-3M5
M32-3M3
M32-4M5
M32-4M8



Note :

Position T08-T10



GSE-1510



	3xER16
	1:1
RPM max.	5'000

Machines Types

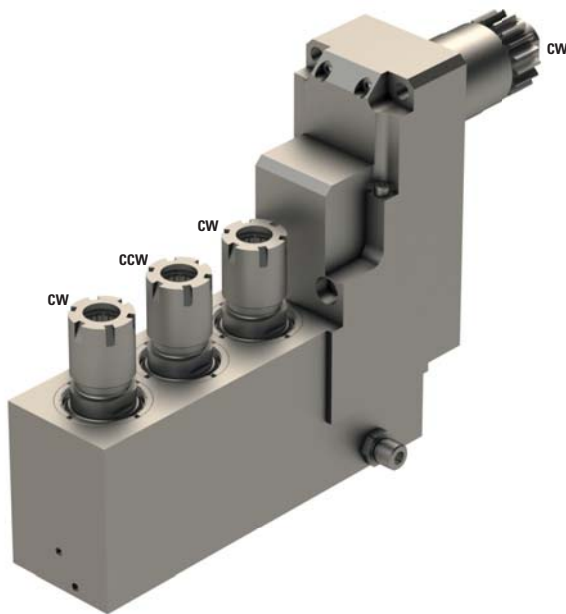
M220-III
M220-V
M232-III
M232-V
M320-III
M320-V
M332-III
M332-V
M32-4M5
M32-4M8


Note :

Position T10



GSE-1510-IK



 3xER16

 1:1

RPM max. 5'000

Machines Types

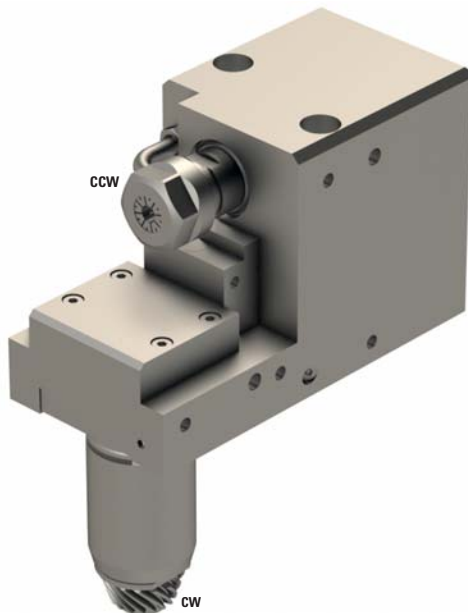
M220-III
M220-V
M232-III
M232-V
M320-III
M320-V
M332-III
M332-V
M32-4M5
M32-4M8


Note :

Position T10



KSE110-K



 ER16

 1:1

RPM max. 5'000

Machines Types

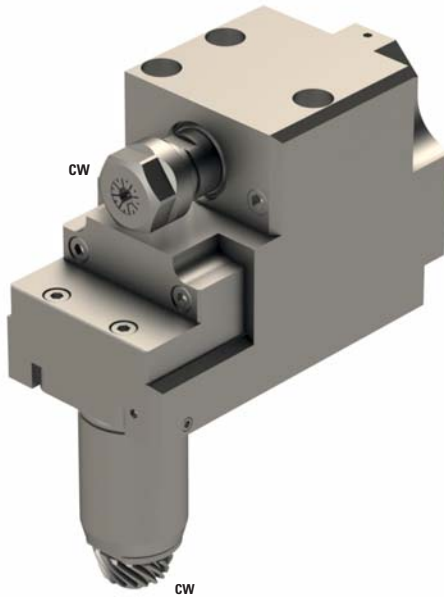
M220-III
M220-V
M232-III
M232-V
M320-III
M320-V
M332-III
M332-V
M32-4M5
M32-4M8


Note :

Position T20-T29



KSE110-KAI



 ER16

 1:1

RPM max. 5'000

Machines Types

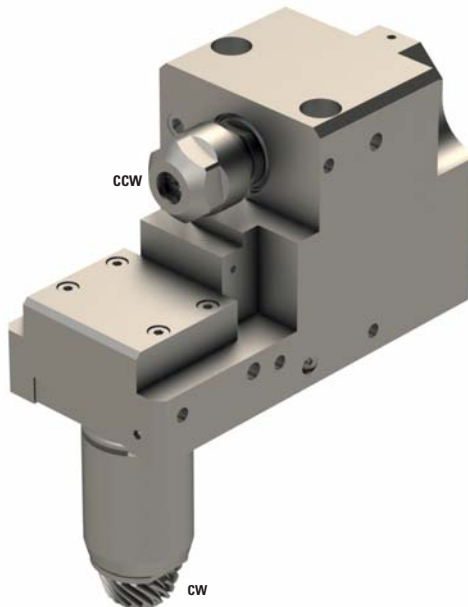
M220-III
M220-V
M232-III
M232-V
M320-III
M320-V
M332-III
M332-V
M32-4M5
M32-4M8


Note :

Position T20-T29
For high pressure



KSE210-IK



 ER16

 1:2

RPM max. 10'000

Machines Types

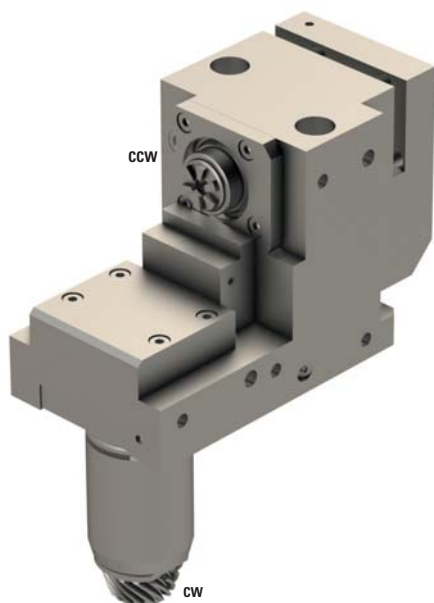
M220-III
M220-V
M232-III
M232-V
M320-III
M320-V
M332-III
M332-V
M32-4M5
M32-4M8


Note :

Position T20-T29
For high pressure



KSE-307-KAI



	ER11
---	------

	1:1
---	-----

RPM max.	5'000
----------	-------

Machines Types

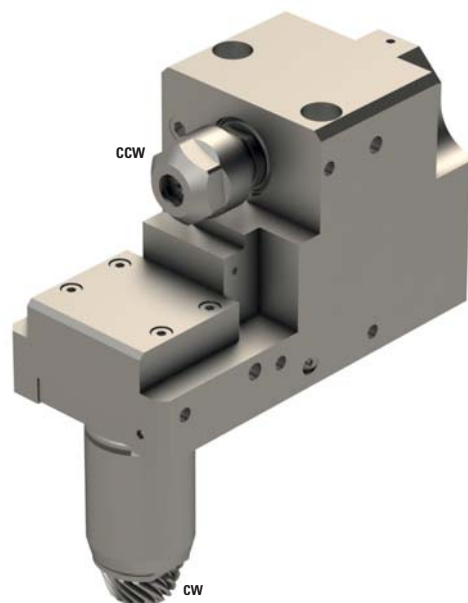
M220-III
M220-V
M232-III
M232-V
M320-III
M320-V
M332-III
M332-V
M32-4M5
M32-4M8


Note :


Position T20-T29



KSE310-IK



	ER16
---	------

	1:1
---	-----

RPM max.	5'000
----------	-------

Machines Types

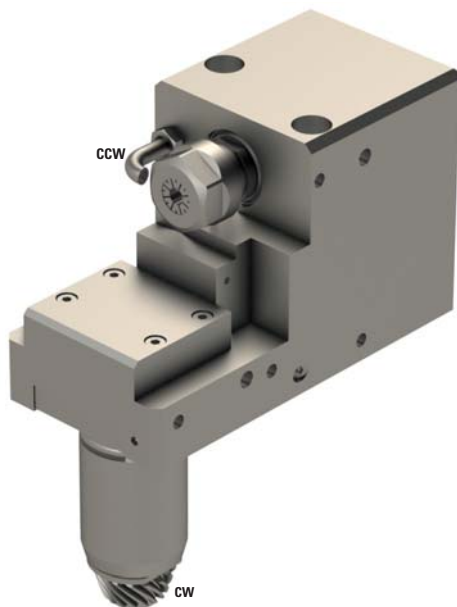
M220-III
M220-V
M232-III
M232-V
M320-III
M320-V
M332-III
M332-V
M32-4M5
M32-4M8


Note :

Position T20-T29
For high pressure



KSE310-K



	ER16
---	------

	1:1
---	-----

RPM max.	5'000
----------	-------

Machines Types

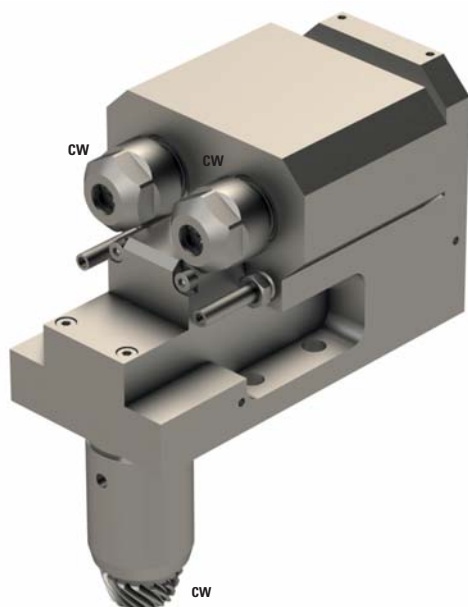
M220-III
 M220-V
 M232-III
 M232-V
 M320-III
 M320-V
 M332-III
 M332-V
 M32-4M5
 M32-4M8


Note :

Position T20-T29
 For high pressure



KSE-510-KAI



	2xER16
---	--------

	1:1
---	-----

RPM max.	5'000
----------	-------

Machines Types

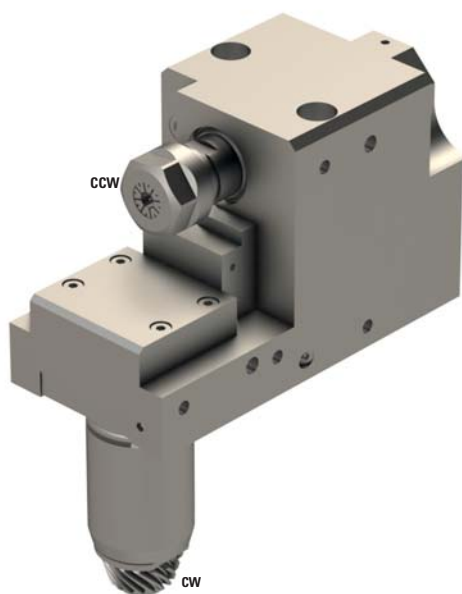
M220-III
 M220-V
 M232-III
 M232-V
 M320-III
 M320-V
 M332-III
 M332-V
 M32-4M5
 M32-4M8


Note :

Position T20-T29



KSE110-BKK



	ER16
---	------

	1:1
---	-----

RPM max.	5'000
----------	-------

Machines Types

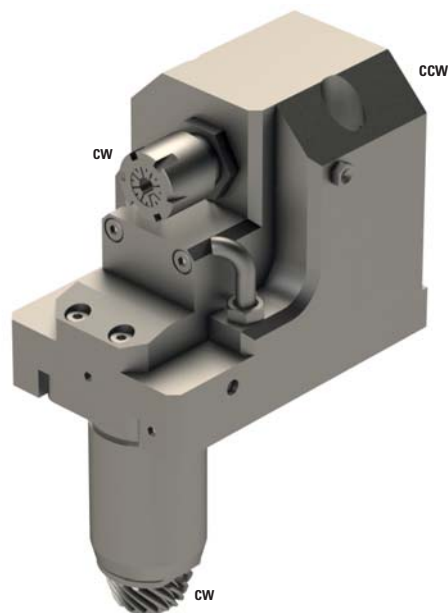
M220-III
M220-V
M232-III
M232-V
M320-III
M320-V
M332-III
M332-V
M32-4M5
M32-4M8


Note :


Position T20-T29
For high pressure



KSE110-DE



	ER16+ER11
---	-----------

	1:1
---	-----

RPM max.	5'000
----------	-------

Machines Types

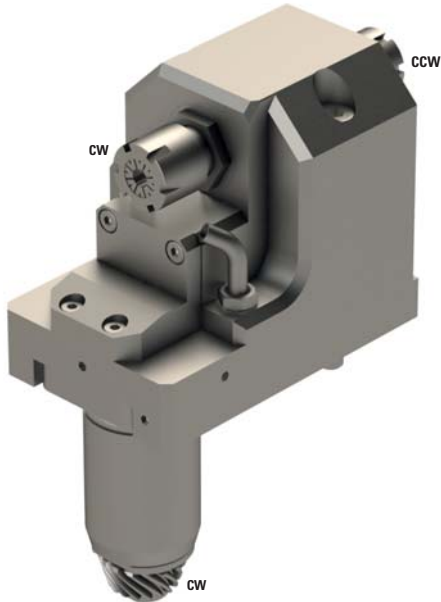
M220-III
M220-V
M232-III
M232-V
M320-III
M320-V
M332-III
M332-V
M32-4M5
M32-4M8


Note :

Position T20-T29



KSE110-DE-32



 ER16+ER16

 1:1

RPM max. 5'000

Machines Types

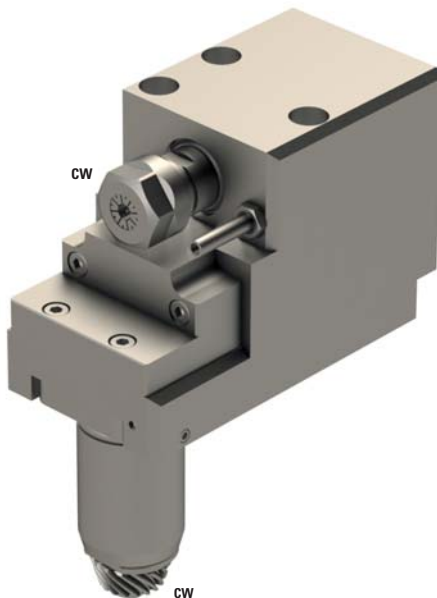
M220-III
M220-V
M232-III
M232-V
M320-III
M320-V
M332-III
M332-V
M32-4M5
M32-4M8


Note :

Position T20-T29



KSE110-US



 ER16

 1:1

RPM max. 5'000

Machines Types

M220-III
M220-V
M232-III
M232-V
M320-III
M320-V
M332-III
M332-V
M32-4M5
M32-4M8


Note :

Position T20-T29



GSC-907



	ER11
---	------

	1:1
---	-----

RPM max.	6'000
----------	-------

Machines Types

L20E2M8
L20E2M10
L20E-1M12
L20E-IX
L20V
L20VII
L20VIII
L20X
M32-3M5
M32-3M3
M32-4M5
M32-4M8


Note :

Position T08-T10



GSC-1010



	ER16
---	------

	1:1
---	-----

RPM max.	6'000
----------	-------

Machines Types

M220-V
M232-III
L20V M232-V
L20VII M320-III
L20VIII M320-V
L20X M332-III
M220-III M332-V
M32-4M5
M32-4M8


Note :

Position T08-T10



GSC1310-HP



	ER16
---	------

	1:1
---	-----

RPM max.	8'000
----------	-------

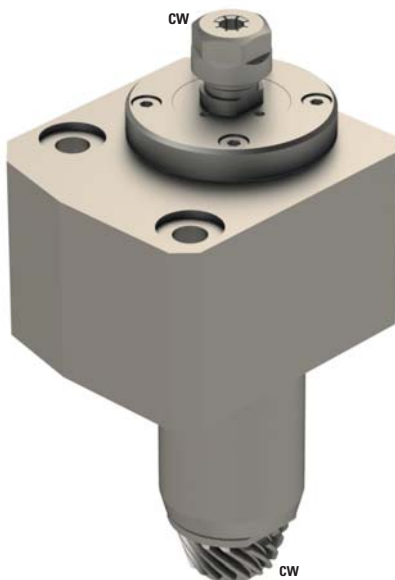
Machines Types	A20-3F7N	M220-III
	A232-VII	M220-V
	A32-VII	M232-III
	A320-VII	M232-V
	L20E-2M8	M320-III
	L20E-2M10	M320-V
	L20E-2M12	M332-III
	L32-1M8	M332-V
	L32-1M10	M32-4M5
	L32-1M12	M32-4M8


Note :

Position T06-T08 according to the machine
 Maximum pressure 137 Bar



KSC110-100ER



	ER11
---	------

	1:2
---	-----

RPM max.	10'000
----------	--------

Machines Types	M220-III
	M220-V
	M232-III
	M232-V
	M320-III
	M320-V
	M332-III
	M332-V
	M32-4M5
	M32-4M8


Note :

Position T20-T29
 Compact size



KSC110-100ER



	ER11
---	------

	1:2
---	-----

RPM max.	10'000
-----------------	--------

Machines Types

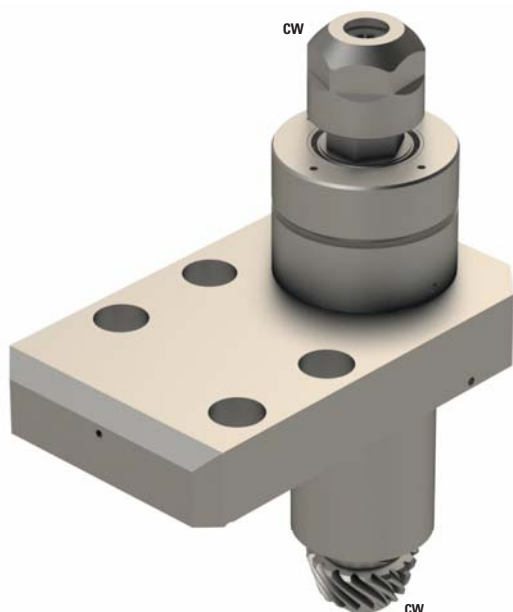
M220-III
M220-V
M232-III
M232-V
M320-III
M320-V
M332-III
M332-V
M32-4M5
M32-4M8


Note :

Position T20-T29
Compact size



KSC110-HP



	ER16
---	------

	1:1
---	-----

RPM max.	5'000
-----------------	-------

Machines Types

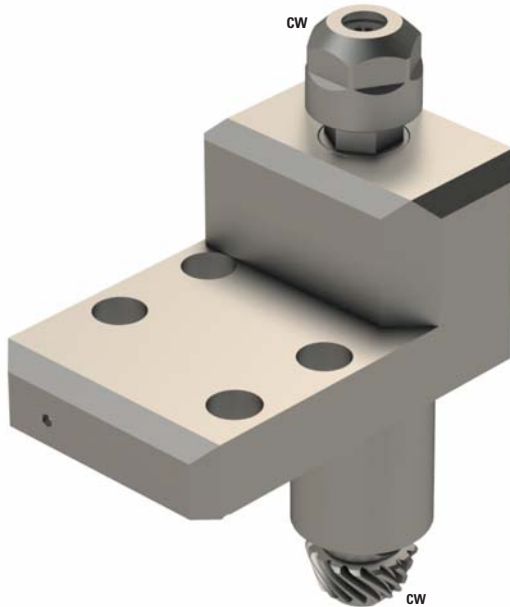
M220-III
M220-V
M232-III
M232-V
M320-III
M320-V
M332-III
M332-V
M32-4M5
M32-4M8


Note :


Position T20-29
Max pressure 70 bars



KSC110-IK



 ER16

 1:1

RPM max. 5'000

Machines Types

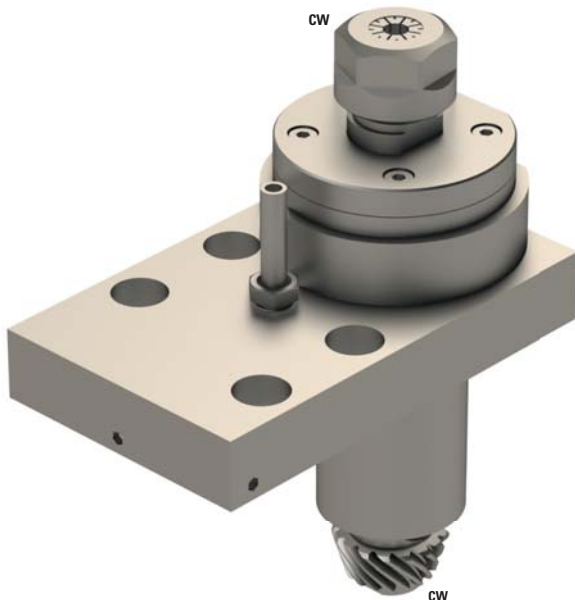
M220-III
M220-V
M232-III
M232-V
M320-III
M320-V
M332-III
M332-V
M32-4M5
M32-4M8


Note :


Position T20-29
Max pressure 30 bars



KSC110-K



 ER16

 1:1

RPM max. 5'000

Machines Types

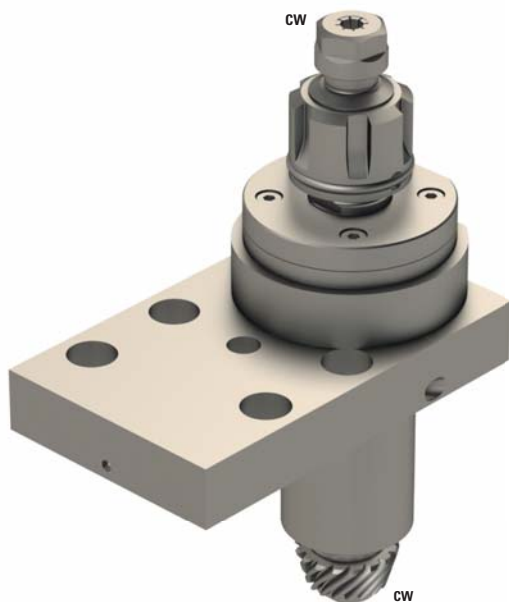
M220-III
M220-V
M232-III
M232-V
M320-III
M320-V
M332-III
M332-V
M32-4M5
M32-4M8


Note :

Position T20-T29



KSC110-K-CR



	ER16
---	------

	1:1
---	-----

RPM max.	5'000
----------	-------

Machines Types


M220-III
M220-V
M232-III
M232-V
M320-III
M320-V
M332-III
M332-V
M32-4M5
M32-4M8

Note :

Position T20-T29
Quick change system ECR

KSC110-K-ER



	ER16
---	------

	1:1
---	-----

RPM max.	5'000
----------	-------

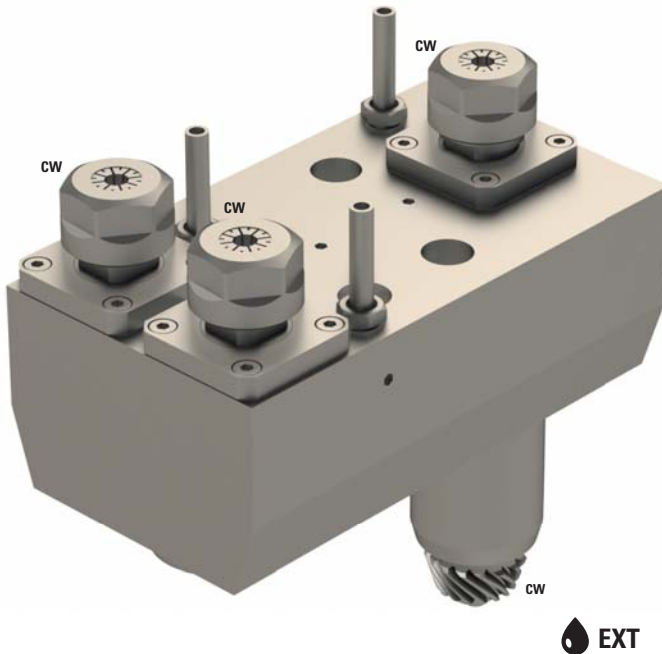
Machines Types


M220-III
M220-V
M232-III
M232-V
M320-III
M320-V
M332-III
M332-V
M32-4M5
M32-4M8

Note :

Position T20-T29
Compact size

KSC-310



 3xER16

 1:1

RPM max. 5'000

Machines Types

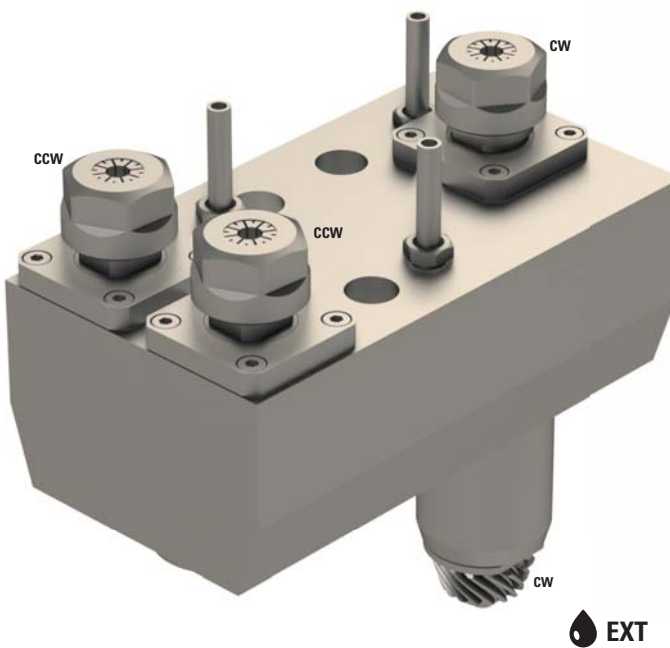
M220-III
M220-V
M232-III
M232-V
M320-III
M320-V
M332-III
M332-V
M32-4M5
M32-4M8


Note :

Position T20-29



KSC-310-II



 3xER16

 1:1.462

RPM max. 7'310

Machines Types

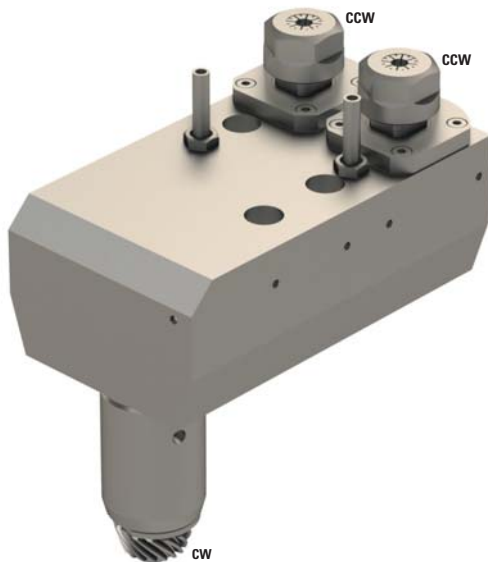
M220-III
M220-V
M232-III
M232-V
M320-III
M320-V
M332-III
M332-V
M32-4M5
M32-4M8



Note :

Position T20-T29



KSC510



	2xER16
	1:1.462
RPM max.	7'310

Machines Types

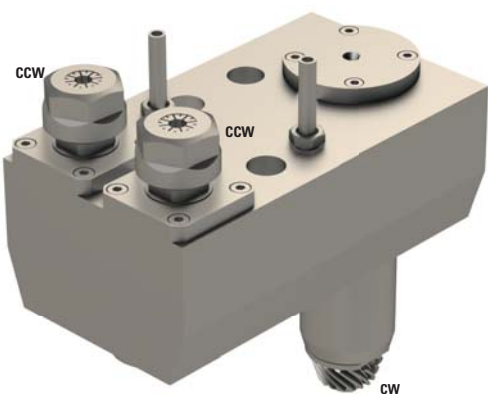
M220-III
M220-V
M232-III
M232-V
M320-III
M320-V
M332-III
M332-V
M32-4M5
M32-4M8



Note :

Position T20-T29



KSC510-10



	2xER16
	1:1.462
RPM max.	7'310

Machines Types

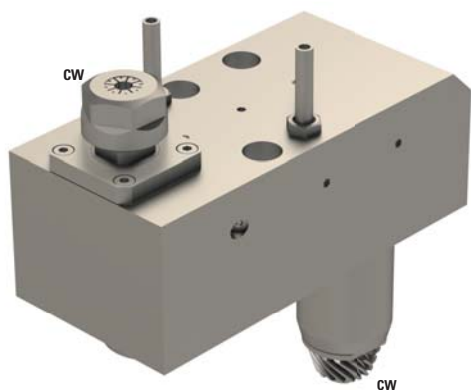
M220-III
M220-V
M232-III
M232-V
M320-III
M320-V
M332-III
M332-V
M32-4M5
M32-4M8


Note :

Position T20-T29
Possibility to adapted it on KSC-310-II



KSC510-DEC-K



 ER16

 1:1

RPM max. 5'000

Machines Types

M220-III
M220-V
M232-III
M232-V
M320-III
M320-V
M332-III
M332-V
M32-4M5
M32-4M8


Note :

Position T20-T29



GSC-204-3X



	ER11
---	------

	1:3
---	-----

RPM max.	15'000
-----------------	--------

Machines Types	A20-3F7N	M220-III
	A232-VII	M220-V
	A32-VII	M232-III
	A320-VII	M232-V
	L20E-2M8	M320-III
	L20E-2M10	M320-V
	L20E-2M12	M332-III
	L32-1M8	M332-V
	L32-1M10	M32-4M5
	L32-1M12	M32-4M8


Note :

Position T06-T10 according to the machine



GSC-510-L-3X



	ER11
---	------

	1:3
---	-----

RPM max.	18'000
-----------------	--------

Machines Types	L20E2M8	M220-V
	L20E2M10	M232-III
	L20E-1M12	M232-V
	L20E-IX	M320-III
	L20V	M320-V
	L20VII	M332-III
	L20VIII	M332-V
	L20X	M32-4M5
	M220-III	M32-4M8


Note :

Position T08-T10



GSC-510-4X



 ER08

 1:3.8

RPM max. 22'800

Machines Types

L20E2M8
L20E-2M10
L20E-1M12
L20E-IX
L20V
L20VII
L20VIII
L20X
M32-3M5
M32-3M3
M32-4M5
M32-4M8


Note :

Position T08-T10



GSC-310-3X



 ER11

 1:3

RPM max. -

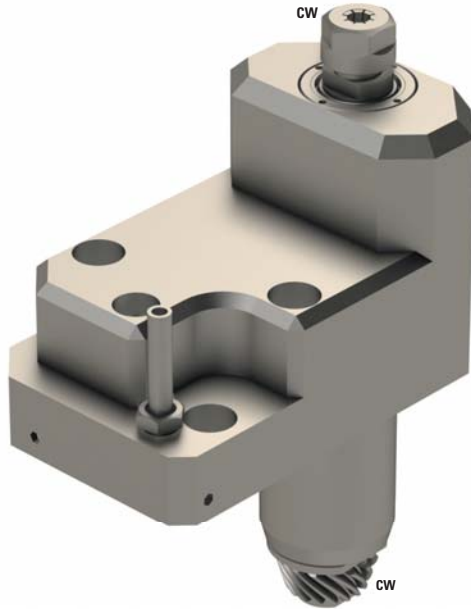
Machines Types L25



Note :

Position T08-T10



KSC-DEC-L-10X3



	ER11
	1:3.012
RPM max.	15'060

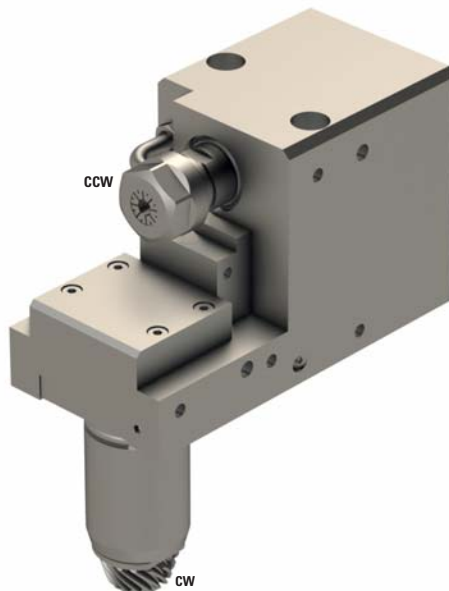
Machines Types



M220-III
M220-V
M232-III
M232-V
M320-III
M320-V
M332-III
M332-V
M32-4M5
M32-4M8

Note :

Position T20-T29

KSE110-2X



	ER11
	1:2
RPM max.	10'000

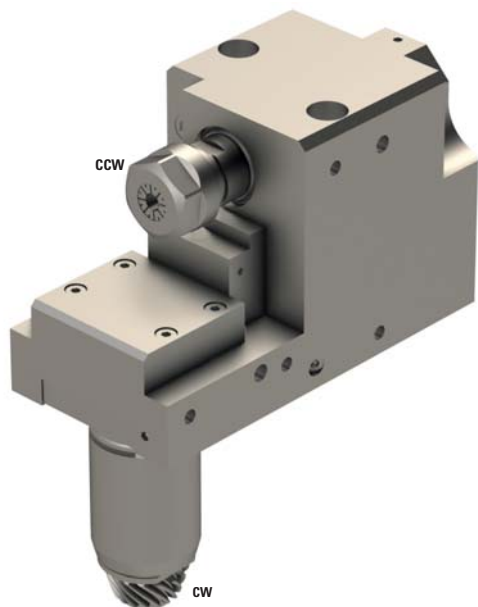
Machines Types


M220-III
M220-V
M232-III
M232-V
M320-III
M320-V
M332-III
M332-V
M32-4M5
M32-4M8

Note :

Position T20-T29
For high pressure

KSE110-IK-2X



	ER16
---	------

	1:2
---	-----

RPM max.	10'000
----------	--------

Machines Types

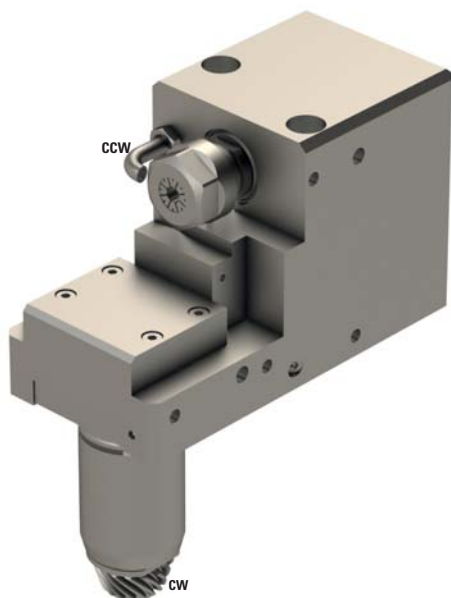
M220-III
 M220-V
 M232-III
 M232-V
 M320-III
 M320-V
 M332-III
 M332-V
 M32-4M5
 M32-4M8


Note :


Position T20-T29



KSE310-2X



	ER16
---	------

	1:2
---	-----

RPM max.	10'000
----------	--------

Machines Types

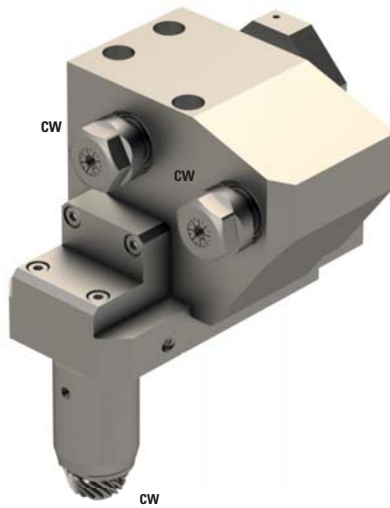
M220-III
 M220-V
 M232-III
 M232-V
 M320-III
 M320-V
 M332-III
 M332-V
 M32-4M5
 M32-4M8



Note :

Position T20-T29



KSE250-KAI-2X



	2xER16
	1:2.027
RPM max.	10'135

Machines Types

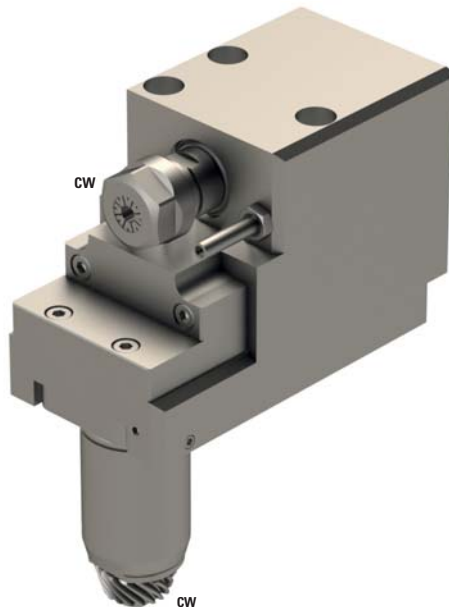
M220-III
M220-V
M232-III
M232-V
M320-III
M320-V
M332-III
M332-V
M32-4M5
M32-4M8



Note :

Position T20-T29
Need two positions
Intern coolant juste for the face spindle.
18° for the second spindle
Pressure max. 30 Bar



KSE110-US-2X



	ER16
	1:2
RPM max.	10'000

Machines Types

M220-III
M220-V
M232-III
M232-V
M320-III
M320-V
M332-III
M332-V
M32-4M5
M32-4M8

Note :

Position T20-T29



KSC-DEC-10X2-ER



ER11



1:2.056

RPM max.

10'280

Machines Types

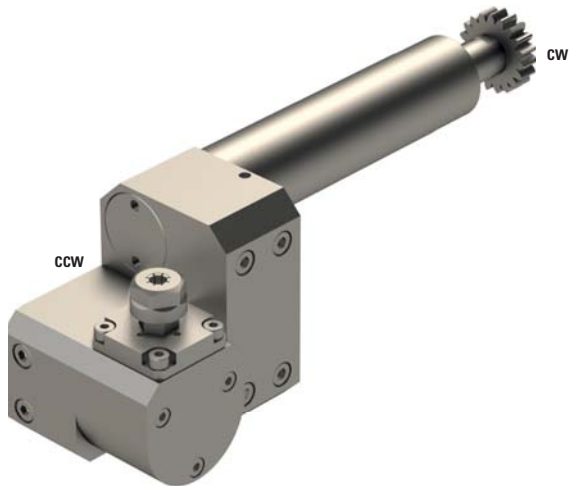
M220-III
M220-V
M232-III
M232-V
M320-III
M320-V
M332-III
M332-V
M32-4M5
M32-4M8


Note :

Position T20-T29



GSA-107



	ER11
---	------

	1:1
---	-----

RPM max.	6'000
----------	-------

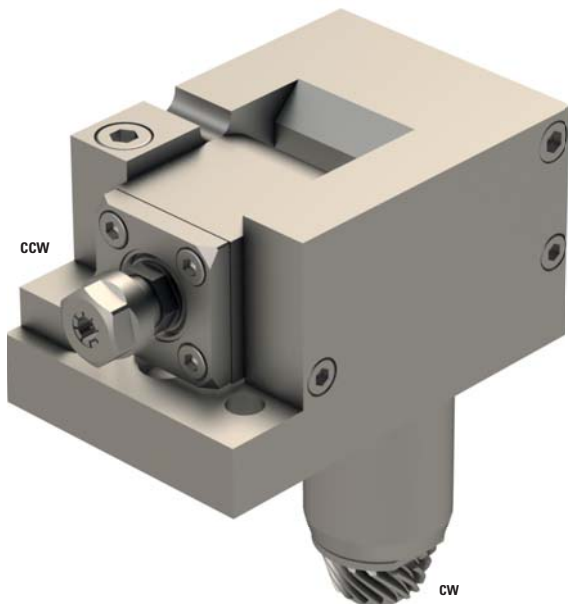
Machines Types	L20E2M8	M220-V
	L20E2M10	M232-III
	L20E-1M12	M232-V
	L20E-IX	M320-III
	L20V	M320-V
	L20VII	M332-III
	L20VIII	M332-V
	L20X	M32-4M5
M220-III	M32-4M8	


Note :

Position T08-T10
Need 2 tool positions
Adjustable 0°-180°



KSA107-S



	ER11
---	------

	1:1
---	-----

RPM max.	5'000
----------	-------

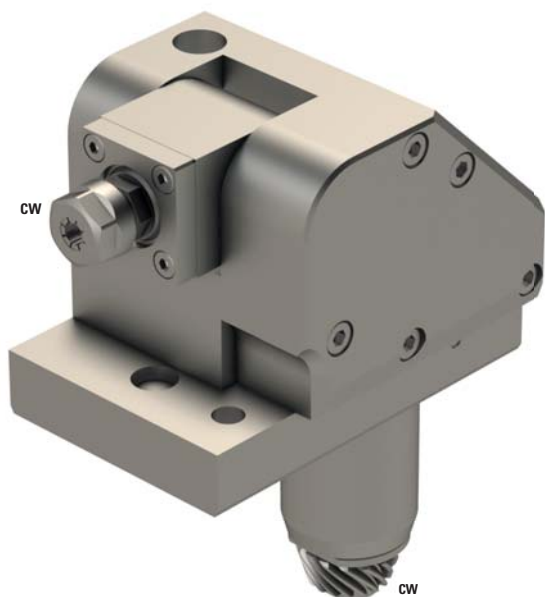
Machines Types	M220-III
	M220-V
	M232-III
	M232-V
	M320-III
	M320-V
	M332-III
	M332-V
	M32-4M5
	M32-4M8


Note :

Position T20-T29
Adjustable 0 to 90°



KSA-307



	ER11
	1:1
RPM max.	5'000

Machines Types

M220-III
 M220-V
 M232-III
 M232-V
 M320-III
 M320-V
 M332-III
 M332-V
 M32-4M5
 M32-4M8



Note :

Position T20-T29
 Adjustable 0 to 30°



KSA-407



	ER11
	1:1
RPM max.	5'000

Machines Types

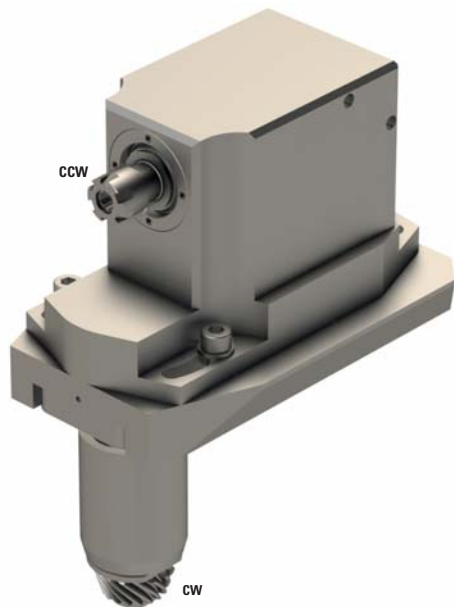
M220-III
 M220-V
 M232-III
 M232-V
 M320-III
 M320-V
 M332-III
 M332-V
 M32-4M5
 M32-4M8


Note :

Position T20-T29
 Adjustable 30° to 90°



KSF-130-ER



	ER11
---	------

	1:1
---	-----

RPM max.	5'000
----------	-------

Machines Types

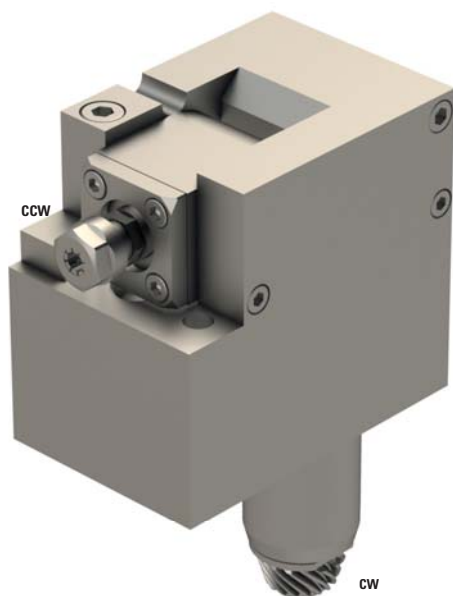
M220-III
M220-V
M232-III
M232-V
M320-III
M320-V
M332-III
M332-V
M32-4M5
M32-4M8


Note :

Position T20-T29
Adjustable $\pm 20^\circ$



KSA107-S-H



	ER11
---	------

	1:1
---	-----

RPM max.	5'000
----------	-------

Machines Types

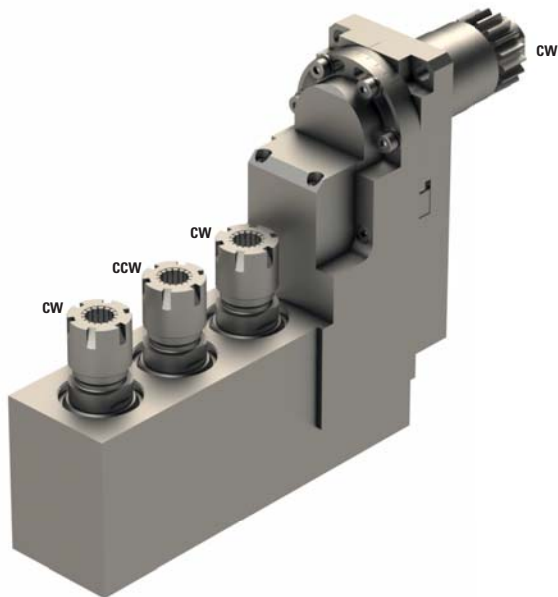
M220-III
M220-V
M232-III
M232-V
M320-III
M320-V
M332-III
M332-V
M32-4M5
M32-4M8

Note :

Position T20-T29
Adjustable 0 to 90°
Basis +40 mm



GSA-1510



	3xER16
	1:1
RPM max.	8'000
Machines Types	M32-4M5 M32-4M8
Note :	

Position T08-T10
Need 2 tool positions
Adjustable 0°-30°



GSS-510



∅ 16

⚙️ 2:1

RPM max. 3'000

L20E2M8	M220-V
L20E2M10	M232-III
L20E-1M12	M232-V
L20E-IX	M320-III
L20V	M320-V
L20VII	M332-III
L20VIII	M332-V
L20X	M32-4M5
M220-III	M32-4M8

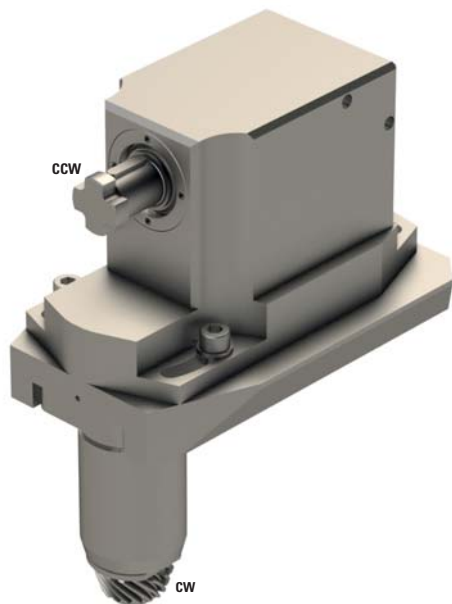
Machines Types


Note :

Position T08-T10
Need 2 tool positions



KSF-130



 16

 1:1

RPM max. 5'000

Machines Types

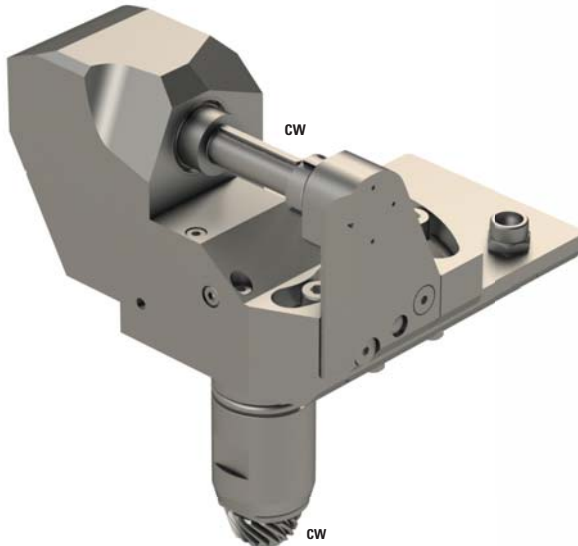
M220-III
M220-V
M232-III
M232-V
M320-III
M320-V
M332-III
M332-V
M32-4M5
M32-4M8


Note :

Position T20-T29
Adjustable $\pm 20^\circ$



KSH-132-25



	13
---	----

	1:1
---	-----

RPM max.	5'000
----------	-------

Machines Types

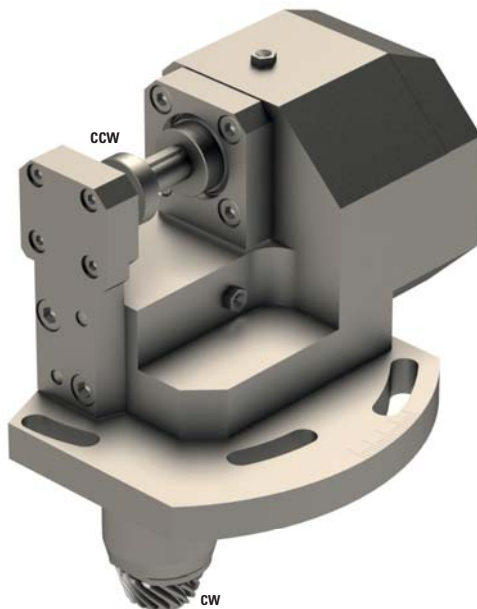
M220-III
M220-V
M232-III
M232-V
M320-III
M320-V
M332-III
M332-V
M32-4M5
M32-4M8


Note :

Position T20-T29
Need two positions
Adjustable $\pm 25^\circ$



KSH-132-27-17



	10
---	----

	1:1.588
---	---------

RPM max.	7'940
----------	-------

Machines Types

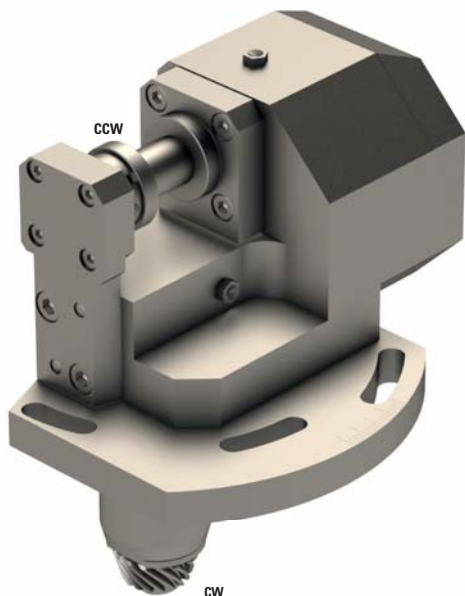
M220-III
M220-V
M232-III
M232-V
M320-III
M320-V
M332-III
M332-V
M32-4M5
M32-4M8


Note :


Position T20-T29
Need two positions
Adjustable 0° to 20°



KSH-132-27-17-II



	16
---	----

	1:1.588
---	---------

RPM max.	7'940
-----------------	-------

Machines Types

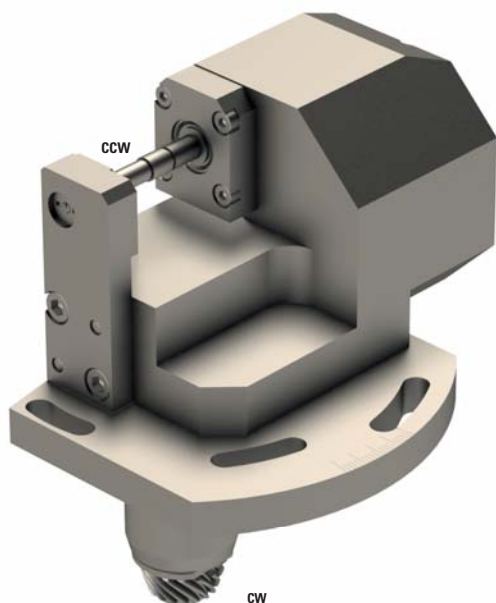
M220-III
 M220-V
 M232-III
 M232-V
 M320-III
 M320-V
 M332-III
 M332-V
 M32-4M5
 M32-4M8


Note :

Position T20-T29
 Need two positions
 Adjustable 0° to 20°



KSH-133-035



	3.5
---	-----

	1:1.588
---	---------

RPM max.	7'940
-----------------	-------

Machines Types

M220-III
 M220-V
 M232-III
 M232-V
 M320-III
 M320-V
 M332-III
 M332-V
 M32-4M5
 M32-4M8



Note :

Position T20-T29
 Need two positions
 Adjustable ±10°



LSW-101-L20



	-
	2:1
RPM max.	3'000

Machines Types

L20E2M8
L20E2M10
L20E-1M12
L20E-IX
L20V
L20VII
L20VIII
L20X
M32-3M5
M32-3M3
M32-4M5
M32-4M8



Note :

Position T08-T10
Need 2 tool positions
Adjustable $\pm 10^\circ$



LSW-101-L25



	-
	2:1
RPM max.	3'000

Machines Types

L20E2M8
L20E2M10
L20E-1M12
L20E-IX
L20V
L20VII
L20VIII
L20X
M32-3M5
M32-3M3
M32-4M5
M32-4M8



Note :

Position T08-T10
Need 2 tool positions
Adjustable $\pm 10^\circ$



LSW-215



	-
	1:1
RPM max.	6'000

Machines Types

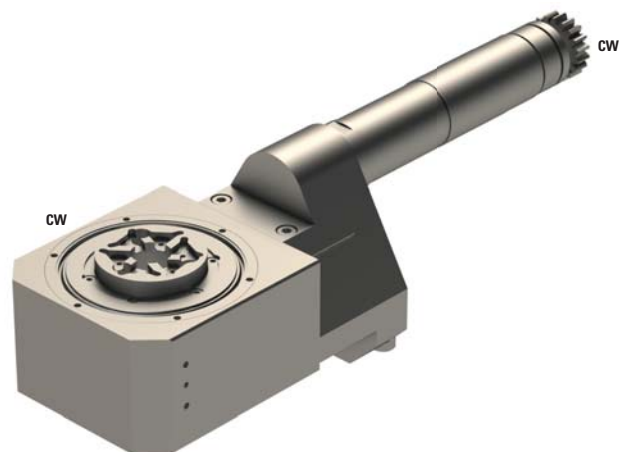
L20E2M8
 L20E2M10
 L20E-1M12
 L20E-IX
 L20V
 L20VII
 L20VIII
 L20X
 M32-3M5
 M32-3M3
 M32-4M5
 M32-4M8


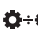
Note :

Position T08-T10
 Need 2 tool positions
 Adjustable $\pm 15^\circ$



LSW-225



	-
	1:1
RPM max.	6'000

Machines Types

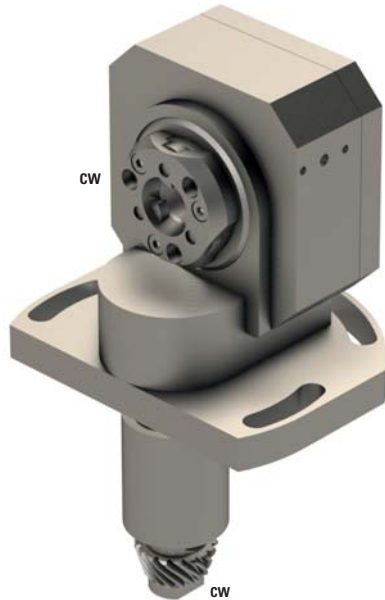
L20E2M8
 L20E2M10
 L20E-1M12
 L20E-IX
 L20V
 L20VII
 L20VIII
 L20X
 M32-3M5
 M32-3M3
 M32-4M5
 M32-4M8


Note :

Position T08-T10
 Need 2 tool positions
 Adjustable $\pm 25^\circ$



KSW-101



	-
	2:1
RPM max.	5'000

Machines Types

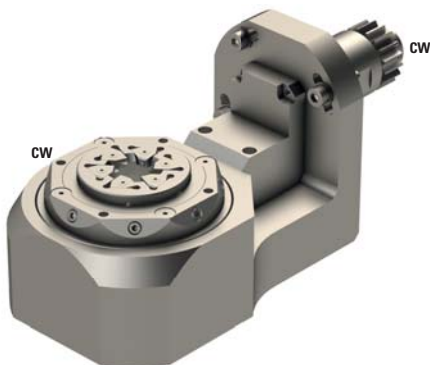
M220-III
M220-V
M232-III
M232-V
M320-III
M320-V
M332-III
M332-V
M32-4M5
M32-4M8



Note :

Position T20-T29
Need 3 positions
Adjustable $\pm 15^\circ$
SCHWANOG cutter head SWG-192236, Z=6, $\varnothing 12$ mm
GLOOR cutter head 501-0001, Z=6, $\varnothing 11$ mm
UTILIS cutter head 137600, Z=9, $\varnothing 12$ mm
UTILIS cutter head 137356, Z=12, $\varnothing 12$ mm



GSW-250



	-
	3:2
RPM max.	5'333

Machines Types

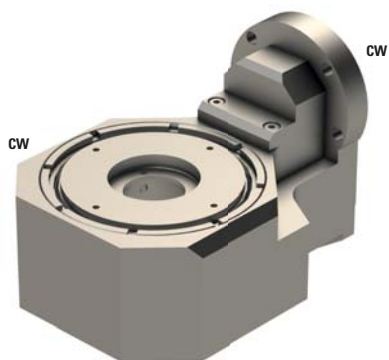
M32-4M5

Note :

Axis B
Adjustable 0 to 25°
Schwanog cutter head from PCM GSW-250-FPSWG, Z=6, $\varnothing 12$ mm



GSW-255

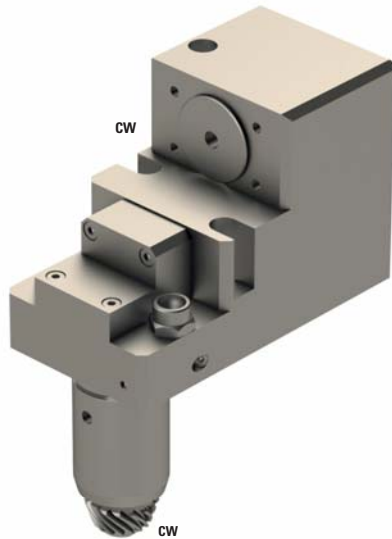


	-
	3:2
RPM max.	5'333
Machines Types	M32-4M8
Note :	

Axis B
Adjustable 0 to 25°
Schwanog cutter head SWG-196617, Z=5, Ø6 mm
Gloor cutter head 501-0003, Z=5, Ø6 mm
Utilis cutter head 138657, Z=9 or Z=7, Ø6 mm



KSE105



∅	31
⚙️	1:1
RPM max.	5'000

Machines Types

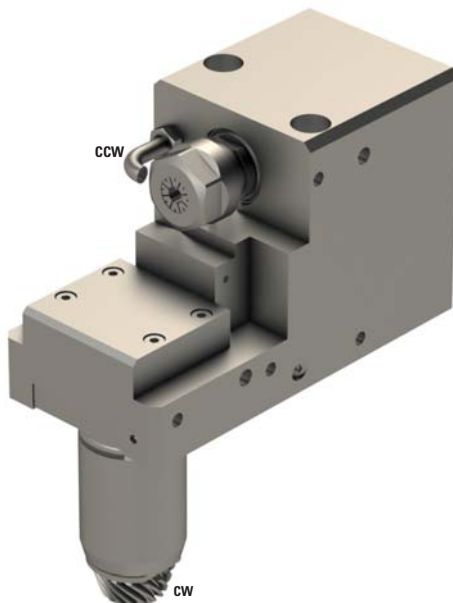
M220-III
M220-V
M232-III
M232-V
M320-III
M320-V
M332-III
M332-V
M32-4M5
M32-4M8

Note :

Position T20-T29



KSE310-UD



≡	ER16
⚙️	2:1
RPM max.	5'000

Machines Types

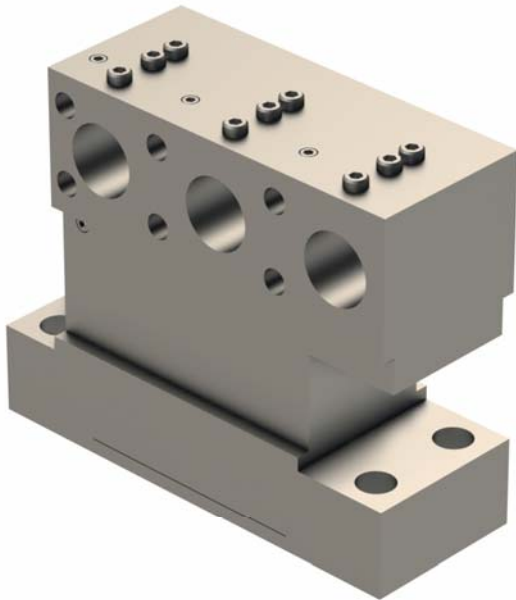
M220-III
M220-V
M232-III
M232-V
M320-III
M320-V
M332-III
M332-V
M32-4M5
M32-4M8

Note :

Position T20-T29
For high pressure



852-258-OF010



∅	3x25.4
---	--------

⚙️+⚙️	-
-------	---

RPM max.	-
----------	---

Machines Types

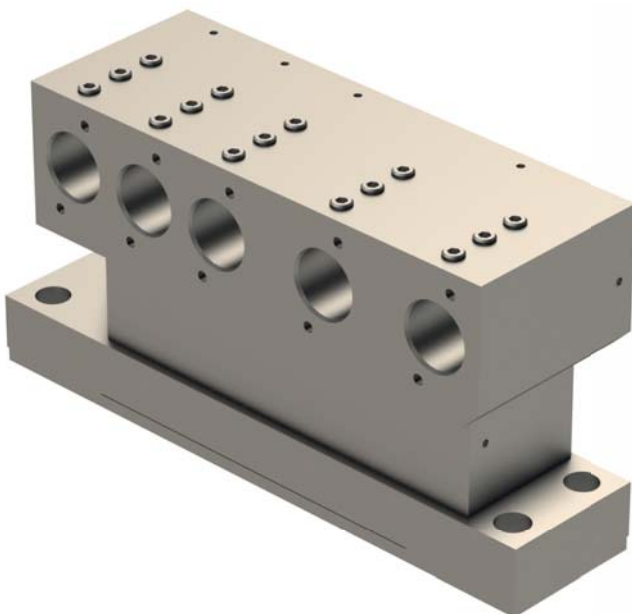
M220-III
 M220-V
 M232-III
 M232-V
 M320-III
 M320-V
 M332-III
 M332-V
 M32-4M5
 M32-4M8

Note :

Replace the original back tool post



856-525-OF010



∅	5x25.4
---	--------

⚙️+⚙️	-
-------	---

RPM max.	-
----------	---

Machines Types

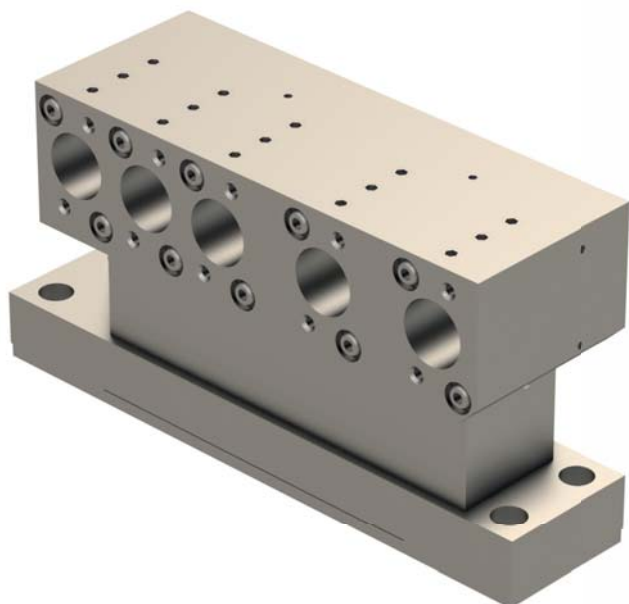
M220-III
 M220-V
 M232-III
 M232-V
 M320-III
 M320-V
 M332-III
 M332-V
 M32-4M5
 M32-4M8

Note :

Replace the original back tool post



852-349-OF030



Ø 5x25.4

⚙️ -

RPM max. -

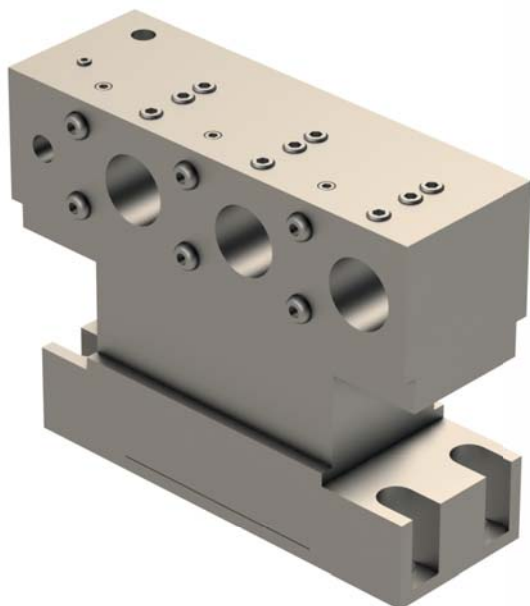
Machines Types

M220-III
M220-V
M232-III
M232-V
M320-III
M320-V
M332-III
M332-V
M32-4M5
M32-4M8

Note :

Replace the original back tool post

857-203-OF120



Ø 3x25.4+1x10

⚙️ -

RPM max. -

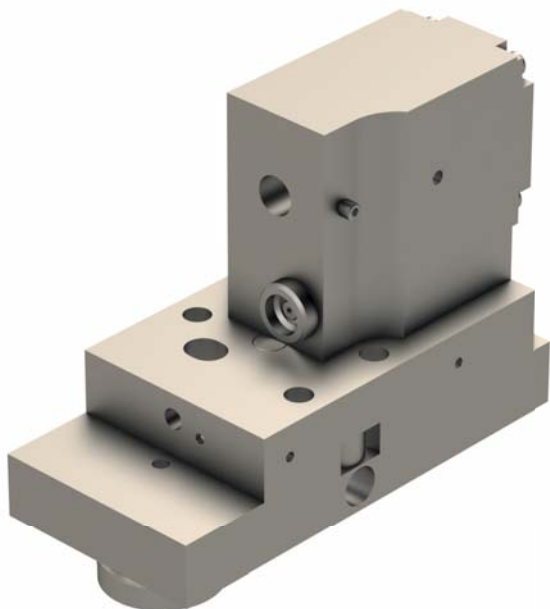
Machines Types

M220-III
M220-V
M232-III
M232-V
M320-III
M320-V
M332-III
M332-V
M32-4M5
M32-4M8

Note :

Replace original back tool post

856-003-OF105



∅	12
---	----

⚙️+⚙️	-
-------	---

RPM max.	-
----------	---

Machines Types

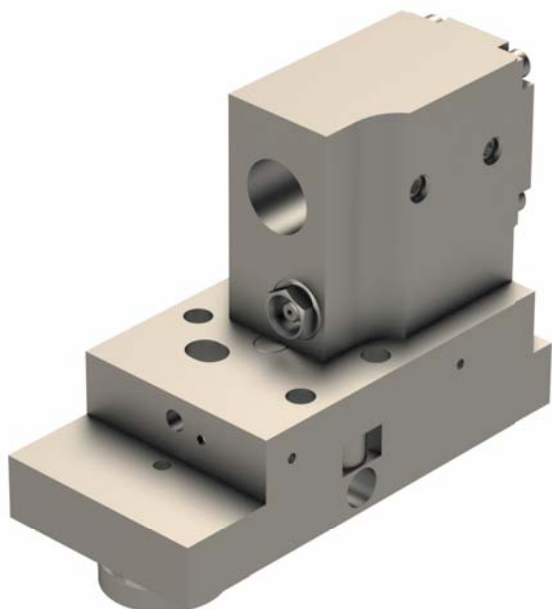
M220-III
 M220-V
 M232-III
 M232-V
 M320-III
 M320-V
 M332-III
 M332-V
 M32-4M5
 M32-4M8

Note :

Position T20-T29



856-003-OF100



∅	22
---	----

⚙️+⚙️	-
-------	---

RPM max.	-
----------	---

Machines Types

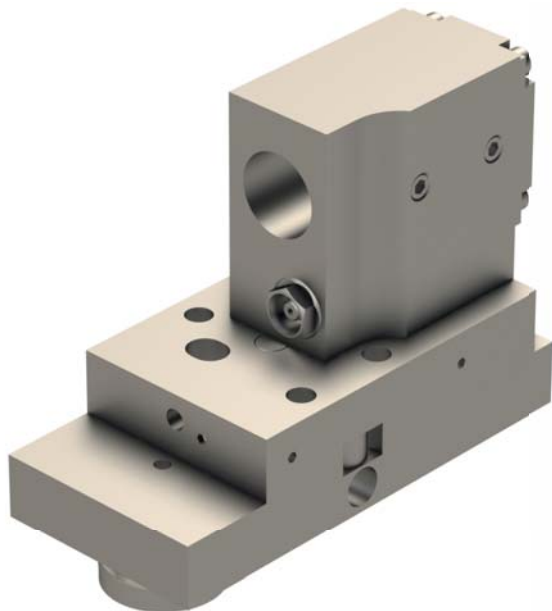
M220-III
 M220-V
 M232-III
 M232-V
 M320-III
 M320-V
 M332-III
 M332-V
 M32-4M5
 M32-4M8

Note :

Position T20-T29



856-003-OF113



∅	25.4
---	------

⚙️	-
----	---

RPM max.	-
----------	---

Machines Types

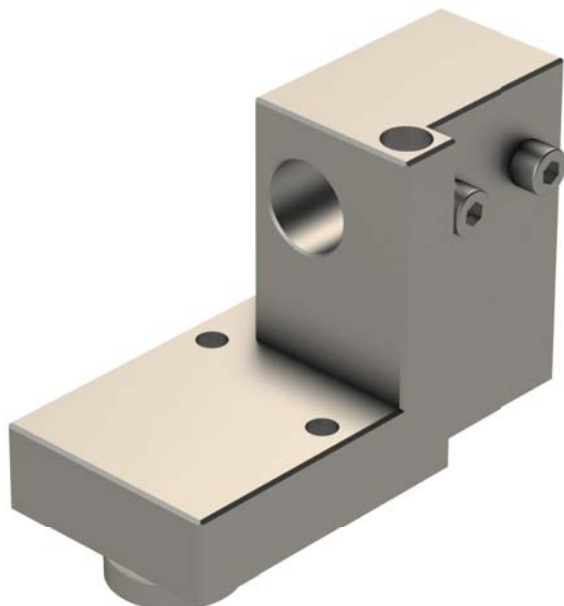
M220-III
M220-V
M232-III
M232-V
M320-III
M320-V
M332-III
M332-V
M32-4M5
M32-4M8

Note :

Position T20-T29



CDF101



∅	25.4
---	------

⚙️	-
----	---

RPM max.	-
----------	---

Machines Types

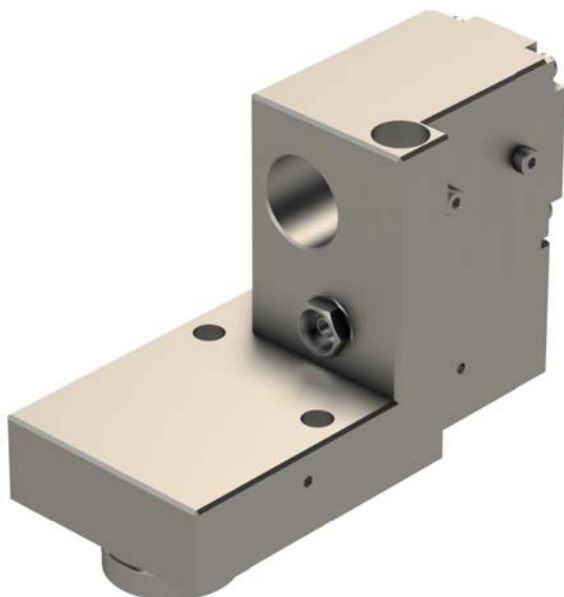
M220-III
M220-V
M232-III
M232-V
M320-III
M320-V
M332-III
M332-V
M32-4M5
M32-4M8

Note :

Position T20-T29



CDF101-AR-3



Ø 25

⚙️ -

RPM max. -

Machines Types

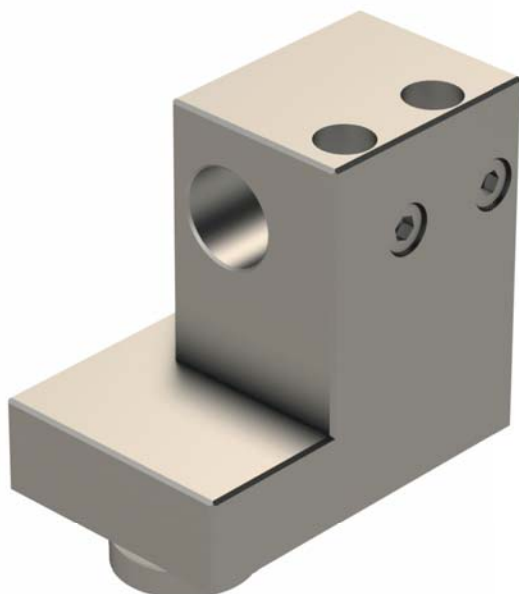
M220-III
M220-V
M232-III
M232-V
M320-III
M320-V
M332-III
M332-V
M32-4M5
M32-4M8

Note :

Position T20-T29



CDF201



Ø 25.4

⚙️ -

RPM max. -

Machines Types

M220-III
M220-V
M232-III
M232-V
M320-III
M320-V
M332-III
M332-V
M32-4M5
M32-4M8

Note :

Position T20-T29



CD401



Ø 2x25.4

⚙️ -

RPM max. -

Machines Types

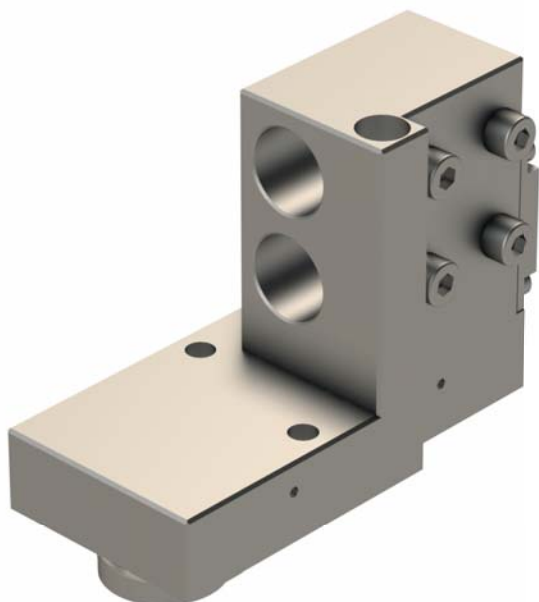
M220-III
M220-V
M232-III
M232-V
M320-III
M320-V
M332-III
M332-V
M32-4M5
M32-4M8

Note :

Position T20-T29



CD402-AR



Ø 25

⚙️ -

RPM max. -

Machines Types

M220-III
M220-V
M232-III
M232-V
M320-III
M320-V
M332-III
M332-V
M32-4M5
M32-4M8

Note :

Position T20-T29



CDF101-AR-10



∅	10
---	----

⚙️	-
----	---

RPM max.	-
----------	---

Machines Types

M220-III
 M220-V
 M232-III
 M232-V
 M320-III
 M320-V
 M332-III
 M332-V
 M32-4M5
 M32-4M8

Note :

Position T20-T29



CDF101-AR-120-HP



∅	12
---	----

⚙️	-
----	---

RPM max.	-
----------	---

Machines Types

M220-III
 M220-V
 M232-III
 M232-V
 M320-III
 M320-V
 M332-III
 M332-V
 M32-4M5
 M32-4M8

Note :

Position T20-T29
 High pressure 100 Bar



CDF101-SP



Ø	25.4
---	------

⚙️	-
----	---

RPM max.	-
----------	---

Machines Types

M220-III
M220-V
M232-III
M232-V
M320-III
M320-V
M332-III
M332-V
M32-4M5
M32-4M8

Note :

Position T20-T29



CDF201-AR-HP



Ø	25.4
---	------

⚙️	-
----	---

RPM max.	-
----------	---

Machines Types

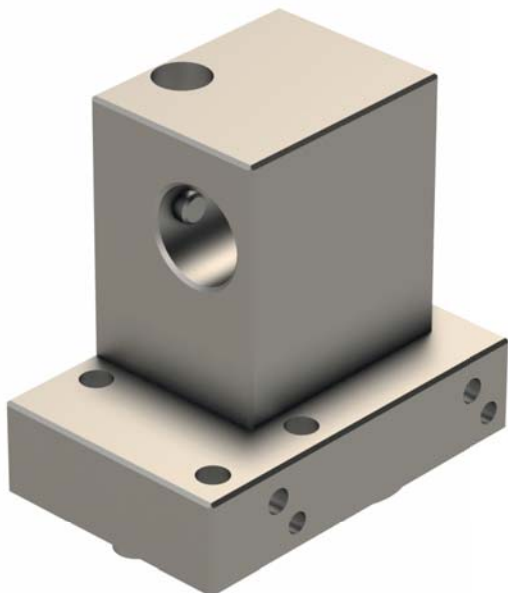
M220-III
M220-V
M232-III
M232-V
M320-III
M320-V
M332-III
M332-V
M32-4M5
M32-4M8

Note :

Position T20-T29
High pressure 100 Bar



CDF301



∅	25.4
---	------

⚙️	-
----	---

RPM max.	-
----------	---

Machines Types

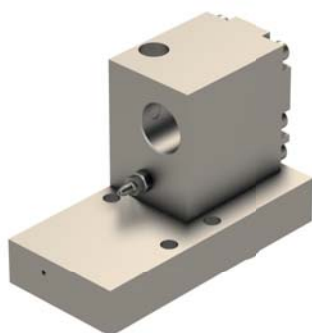
M220-III
 M220-V
 M232-III
 M232-V
 M320-III
 M320-V
 M332-III
 M332-V
 M32-4M5
 M32-4M8

Note :

Position T20-T29



CDF301-AR-HP



∅	25.4
---	------

⚙️	-
----	---

RPM max.	-
----------	---

Machines Types

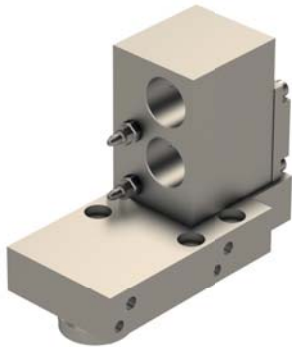
M220-III
 M220-V
 M232-III
 M232-V
 M320-III
 M320-V
 M332-III
 M332-V
 M32-4M5
 M32-4M8

Note :

Position T20-T29
 High pressure 100 Bar



CDF401-AR-HP



∅	25.4
---	------

⚙️	-
----	---

RPM max.	-
----------	---

Machines Types

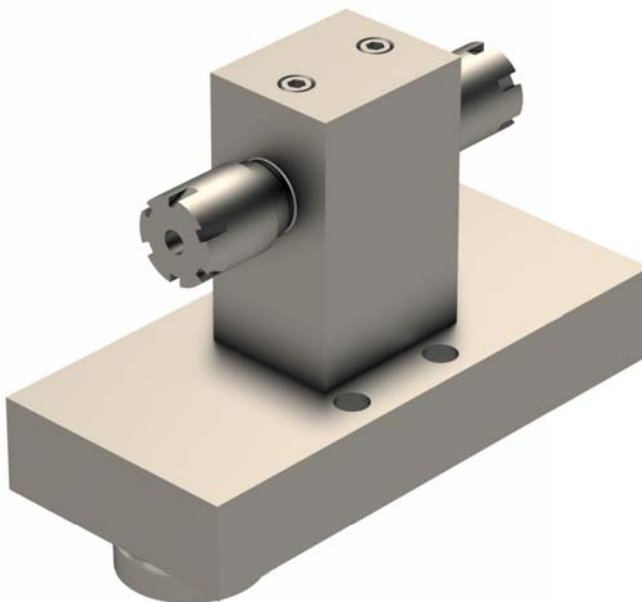
M220-III
M232-III
M320-III
M332-III
M32-4M8

Note :

Position T20-T29
High pressure 100 Bar
Intern coolant on the bottom hole



CDF-ER16



≡	2xER16
---	--------

⚙️	-
----	---

RPM max.	-
----------	---

Machines Types

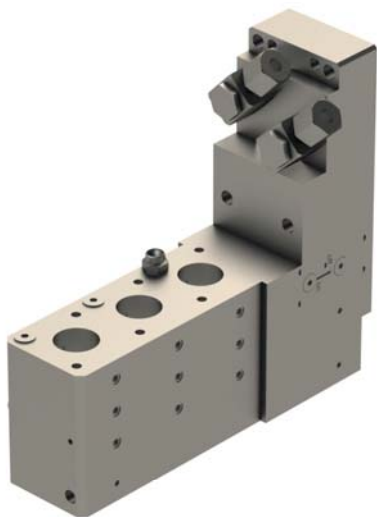
M220-III
M220-V
M232-III
M232-V
M320-III
M320-V
M332-III
M332-V
M32-4M5
M32-4M8

Note :

Position T20-T29



GDF1502-IK



Ø 3x19.05

⚙️ -

RPM max. -

Machines Types

A232-VII	M320-III
A32-VII	M320-V
A320-VII	M332-III
M220-III	M332-V
M220-V	M32-4M5
M232-III	M32-4M8
M232-V	

Note :

Positions
 U34B, T10
 U152B, T34-T37
 U30B, T10
 Max pressure interne 200 Bar
 Max pressure externe 100 Bar
 For Ø6 coolant tube



852-354-OF010



Ø 25

⚙️ -

RPM max. -

Machines Types

L20E2M8
L20E2M10
L20E-1M12
L20E-IX
L20V
L20VII
L20VIII
L20X
M32-3M5
M32-3M3

Note :

Position T08-T10
 For high frequenz spindle Meyrat



GDF903



Ø 25,4

⚙️ -

RPM max. -

Machines Types

L20E2M8	M220-III
L20E2M10	M220-V
L20E-1M12	M232-III
L20E-IX	M232-V
L20V	M320-III
L20VII	M320-V
L20VIII	M332-III
L20X	M332-V

Note :

Position T08-T10 and T06-T09 according to the machine



GDF-903-25



Ø 25,00

⚙️ -

RPM max. -

Machines Types

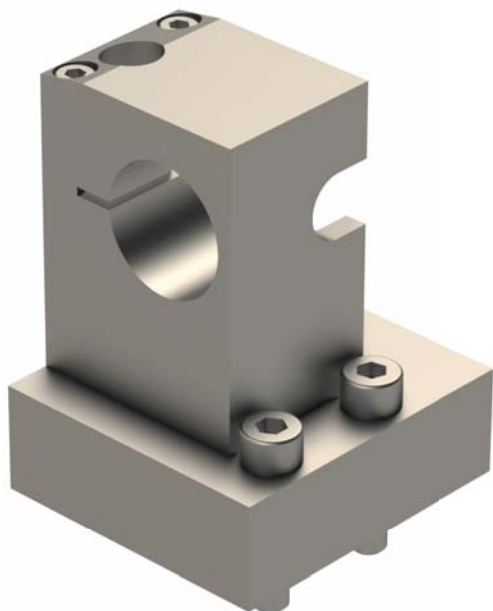
L20E2M8	M220-III
L20E2M10	M220-V
L20E-1M12	M232-III
L20E-IX	M232-V
L20V	M320-III
L20VII	M320-V
L20VIII	M332-III
L20X	M332-V

Note :

Position T06-T09



CDF-HF30



Ø	30
---	----

⚙️	-
----	---

RPM max.	-
----------	---

Machines Types

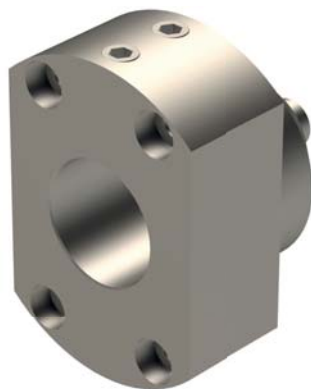
M220-III
 M220-V
 M232-III
 M232-V
 M320-III
 M320-V
 M332-III
 M332-V
 M32-4M5
 M32-4M8

Note :

Position T20-T29
 For high frequenz spindle



SAU-226



Ø	25.4
---	------

⚙️	-
----	---

RPM max.	-
----------	---

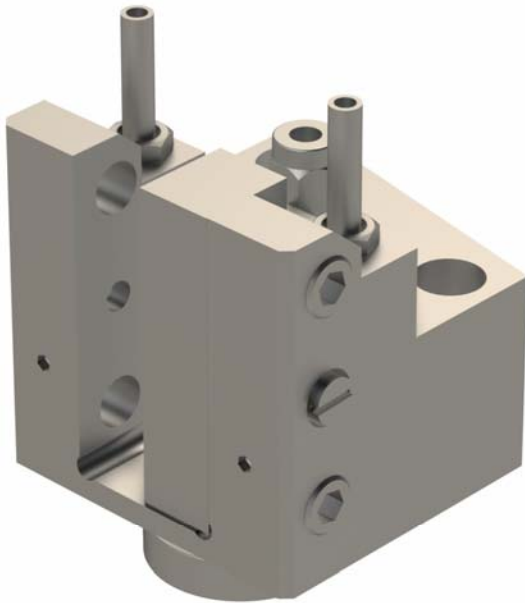
Machines Types


M220-III
 M220-V
 M232-III
 M232-V
 M320-III
 M320-V
 M332-III
 M332-V
 M32-4M5
 M32-4M8

Note :



CTF116-HP



	16
---	----

	-
---	---

RPM max.	-
----------	---

Machines Types

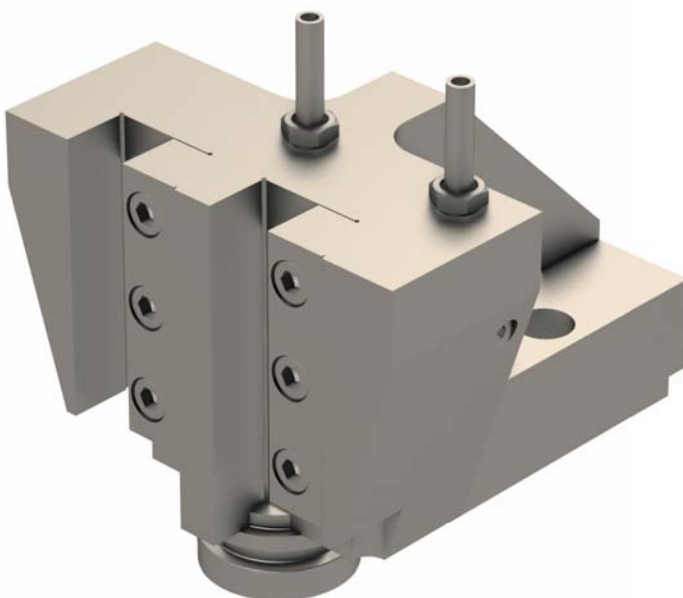
M220-III
M220-V
M232-III
M232-V
M320-III
M320-V
M332-III
M332-V
M32-4M5
M32-4M8


Note :

Position T20-T29
Possibility to mounting two tool holders on a turret site.
Attention, no cooling on back spindle position when used not in double.



CTF1116



	2x16
---	------

	-
---	---

RPM max.	-
----------	---

Machines Types

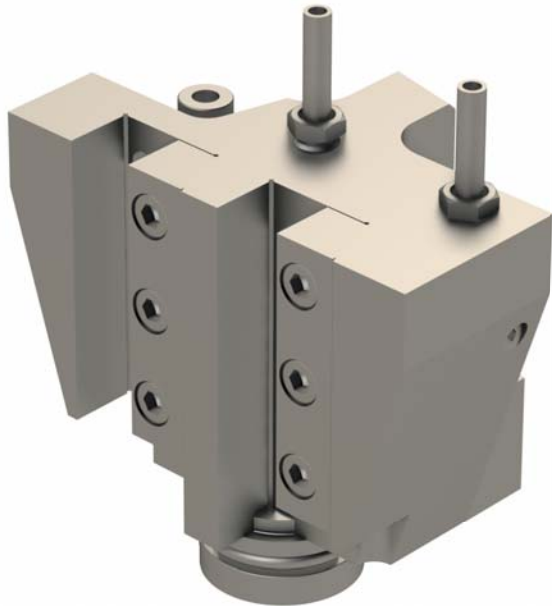
M220-III
M220-V
M232-III
M232-V
M320-III
M320-V
M332-III
M332-V
M32-4M5
M32-4M8

Note :

Position T20-T29



CTF1116-D



∅	2x16
---	------

⚙️⚙️	-
------	---

RPM max.	-
----------	---

Machines Types

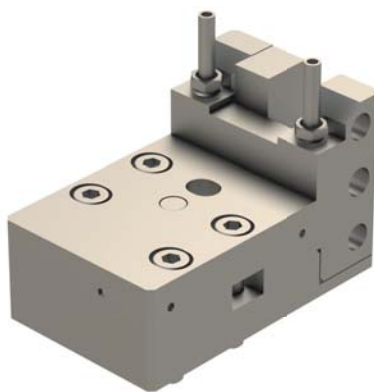
M220-III
 M220-V
 M232-III
 M232-V
 M320-III
 M320-V
 M332-III
 M332-V
 M32-4M5
 M32-4M8

Note :

Position T20-T29
 Possibility to mounting two tool holders on a turret site.
 Attention, no cooling on back spindle position when used not in double.



778-CTF-116-R-AR-HP



∅	16x16
---	-------

⚙️⚙️	-
------	---

RPM max.	-
----------	---

Machines Types

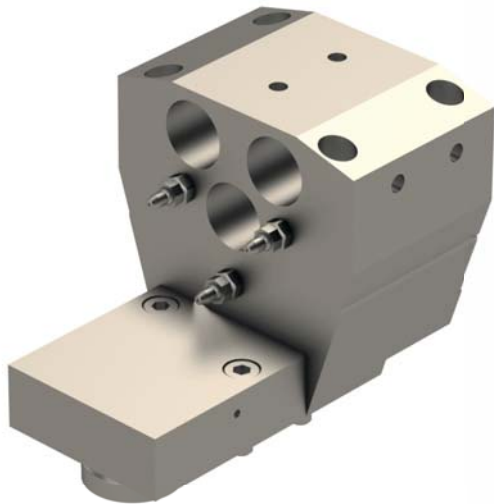
M220-III
 M220-V
 M232-III
 M232-V
 M320-III
 M320-V
 M332-III
 M332-V
 M32-4M5
 M32-4M8

Note :

Position T20-T29



CDF901-IK



Ø	3x25.4
---	--------

⚙️	-
----	---

RPM max.	-
----------	---

Machines Types

M220-III
M220-V
M232-III
M232-V
M320-III
M320-V
M332-III
M332-V
M32-4M5
M32-4M8

Note :

Position T20-T29
High pressure 100 Bar



CDF901-IK-T-HP



Ø	3x25.4
---	--------

⚙️	-
----	---

RPM max.	-
----------	---

Machines Types

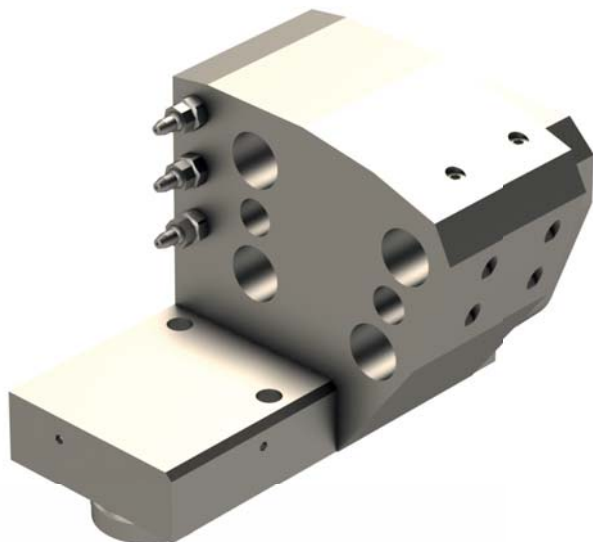
M220-III
M220-V
M232-III
M232-V
M320-III
M320-V
M332-III
M332-V
M32-4M5
M32-4M8

Note :

Position T20-T29
High pressure 100 Bar
Need the basis CDF901-IK, this is an interchangeable head.



CDF905-AR-HP



∅	4x19.05+2x12.7
---	----------------

⚙️	-
----	---

RPM max.	-
----------	---

Machines Types

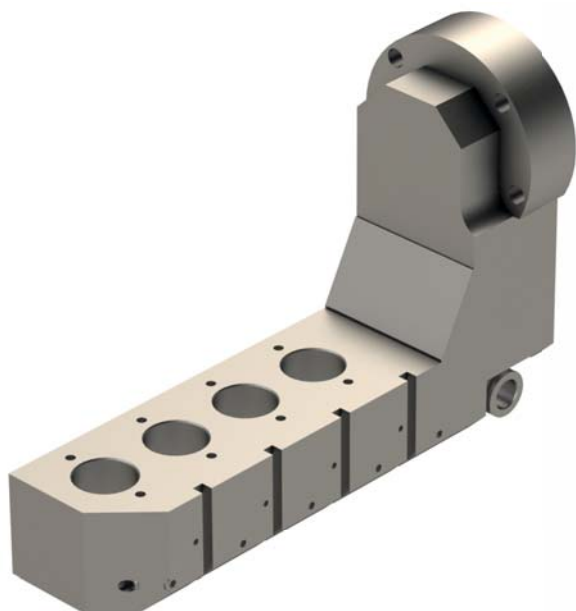
M220-III
 M220-V
 M232-III
 M232-V
 M320-III
 M320-V
 M332-III
 M332-V
 M32-4M5
 M32-4M8

Note :

Position T20-T29
 For high pressure 100 bars



MEU208-MHF



∅	4x20
---	------

⚙️	-
----	---

RPM max.	-
----------	---

Machines Types

M32-4M5
 M32-4M8

Note :

Position Axis B
 For high frequenz spindle

