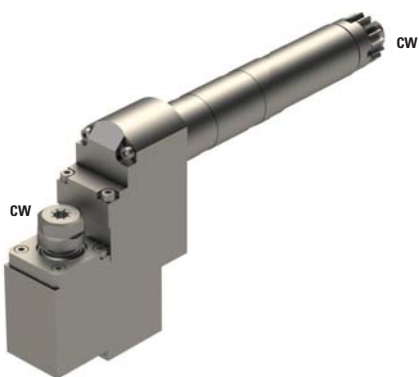



GSE-507



	ER11
---	------

	1:1
---	-----

RPM max.	8'000
----------	-------

Machines Types

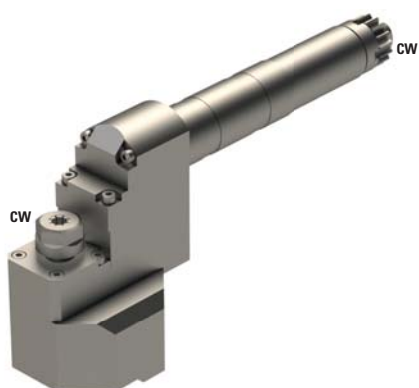
M212-C
 M212-V
 M216-C
 M216-V
 M312-III
 M312-V
 M316-III
 M316-V


Note :

Position T06-T09



GSE-507-DE



	ER11+ER08
---	-----------

	1:1
---	-----

RPM max.	8'000
----------	-------

Machines Types

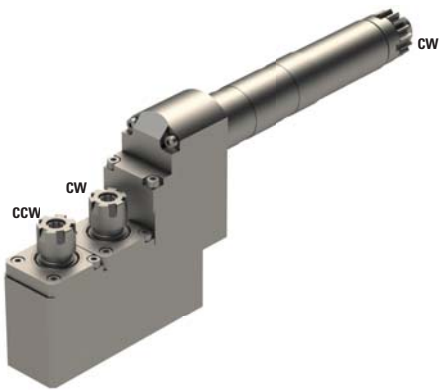
M212-C
 M212-V
 M216-C
 M216-V
 M312-III
 M312-V
 M316-III
 M316-V


Note :


Position T06-T09



GSE-507-DS



	2xER11
---	--------

	1:1
---	-----

RPM max.	8'000
----------	-------

Machines Types

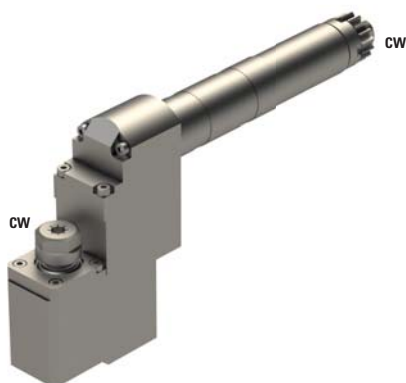
M212-C
M212-V
M216-C
M216-V
M312-III
M312-V
M316-III
M316-V


Note :

Position T06-T09



GSE-508



	ER11
---	------

	1:1
---	-----

RPM max.	8'000
----------	-------

Machines Types

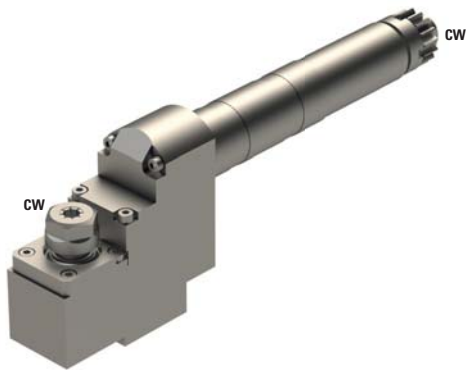
M212-C
M212-V
M216-C
M216-V
M312-III
M312-V
M316-III
M316-V


Note :

Position T06-T09



GSE-707



 ER11

 1:1

RPM max. 8'000

Machines Types

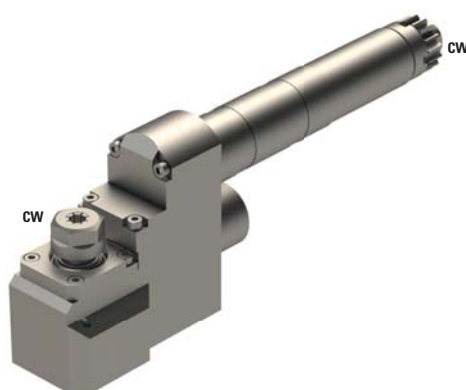
M212-C
M212-V
M216-C
M216-V
M312-III
M312-V
M316-III
M316-V


Note :

Position T06-T09



GSE-708



 ER11

 1.65:1

RPM max. 8'000

Machines Types

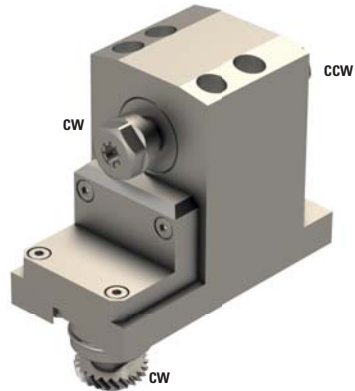
M212-C
M212-V
M216-C
M216-V
M312-III
M312-V
M316-III
M316-V


Note :

Position T06-T09



MSE-106-DS



 2xER11

 1:1

RPM max. 6'000

Machines Types

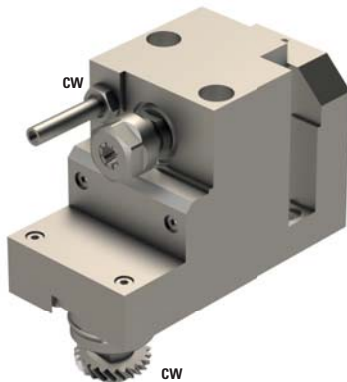
M212-C
M212-V
M216-C
M216-V
M312-III
M312-V
M316-III
M316-V
M16-4M5
M16-4M8


Note :

Position T20-T29



MSE-106-KAI



 ER11

 1:1

RPM max. 6'000

Machines Types

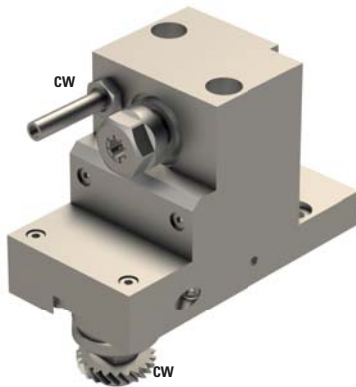
M212-C
M212-V
M216-C
M216-V
M312-III
M312-V
M316-III
M316-V
M16-4M5
M16-4M8


Note :

Position T20-T29



MSE-106-K



	ER11
---	------

	1:1
---	-----

RPM max.	6'000
-----------------	-------

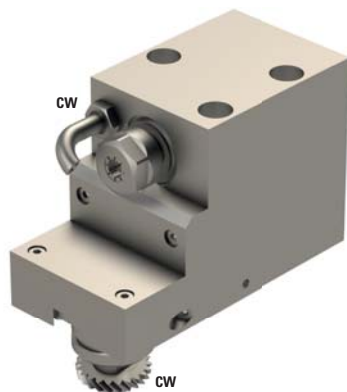
Machines Types	M212-C
	M212-V
	M216-C
	M216-V
	M312-III
	M312-V
	M316-III
	M316-V
	M16-4M5
	M16-4M8


Note :

Position T20-T29



MSE106KM-II



	ER11
---	------

	1:1
---	-----

RPM max.	6'000
-----------------	-------

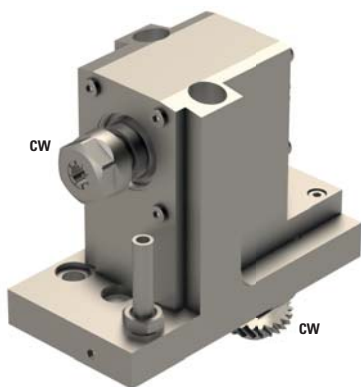
Machines Types	M212-C
	M212-V
	M216-C
	M216-V
	M312-III
	M312-V
	M316-III
	M316-V
	M16-4M5
	M16-4M8


Note :

Position T20-T29



MSE-306-K



	ER11
---	------

	1:1
---	-----

RPM max.	6'000
----------	-------

Machines Types

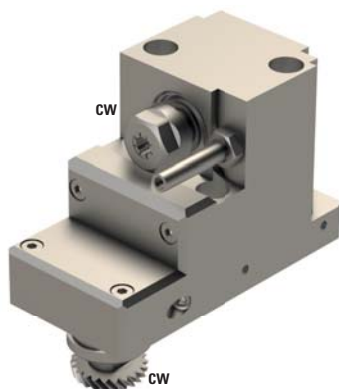
M212-C
M212-V
M216-C
M216-V
M312-III
M312-V
M316-III
M316-V
M16-4M5
M16-4M8


Note :

Position T20-T29



MSE-403



	ER11
---	------

	1:1
---	-----

RPM max.	6'000
----------	-------

Machines Types

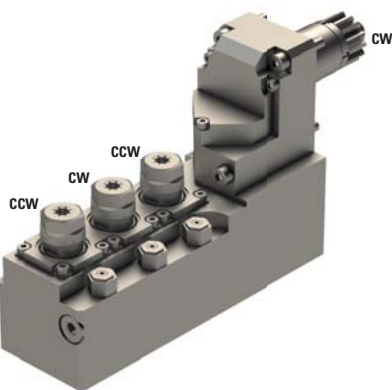
M212-C
M212-V
M216-C
M216-V
M312-III
M312-V
M316-III
M316-V
M16-4M5
M16-4M8

Note :

Position T20-T29



MSE-607

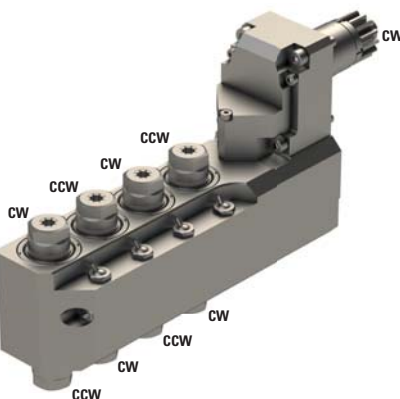


	3xER11
	1:1
RPM max.	6'000
Machines Types	M16-4M5 M16-4M8
Note :	

Position T07-T09



MSE-707

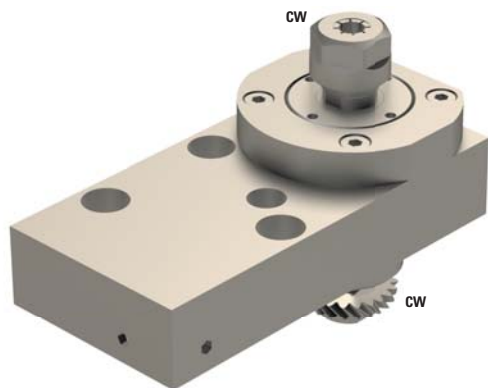



	4xER11+4xER11
	1:1
RPM max.	6'000
Machines Types	M16-4M5 M16-4M8
Note :	

Position T07-T09



MSC-106-K



	ER11
---	------

	1:1
---	-----

RPM max.	6'000
-----------------	-------

Machines Types

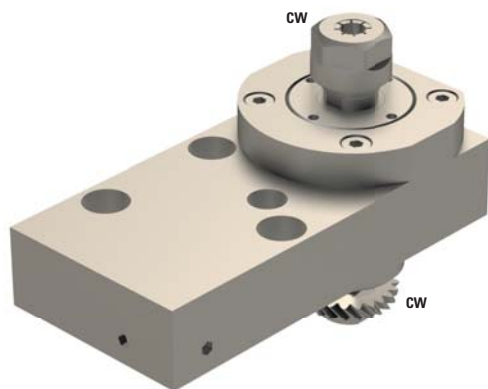
M212-C
M212-V
M216-C
M216-V
M312-III
M312-V
M316-III
M316-V
M16-4M5
M16-4M8


Note :

Position T20-T29



MSC110-K



	ER16
---	------

	1:1
---	-----

RPM max.	8'000
-----------------	-------

Machines Types

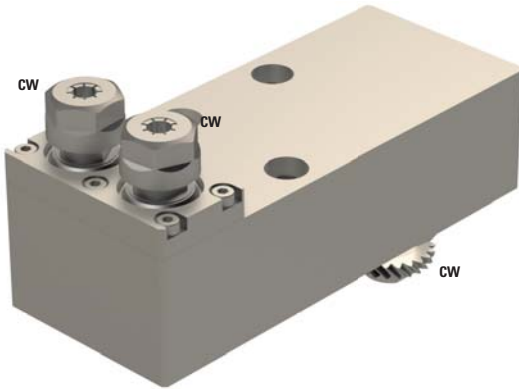
M212-C
M212-V
M216-C
M216-V
M312-III
M312-V
M316-III
M316-V
M16-4M5
M16-4M8


Note :

Position T20-T29



MSC-407



 2xER11

 1:1

RPM max. 6'000

Machines Types

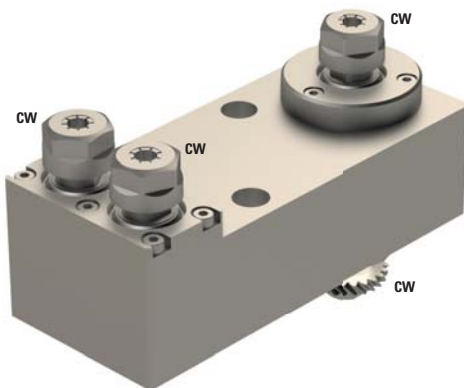
M212-C
M212-V
M216-C
M216-V
M312-III
M312-V
M316-III
M316-V
M16-4M5
M16-4M8


Note :

Position T20-T29



MSC-407-3



 3xER11

 1:1

RPM max. 6'000

Machines Types

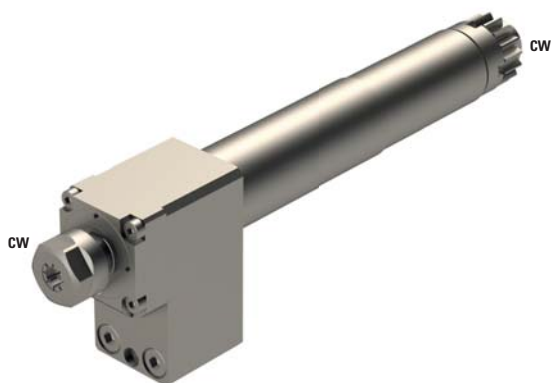
M212-C
M212-V
M216-C
M216-V
M312-III
M312-V
M316-III
M316-V
M16-4M5
M16-4M8


Note :

Position T20-T29



GSC-607-2X



	ER11
---	------

	1:2.116
---	---------

RPM max.	16'928
----------	--------

Machines Types

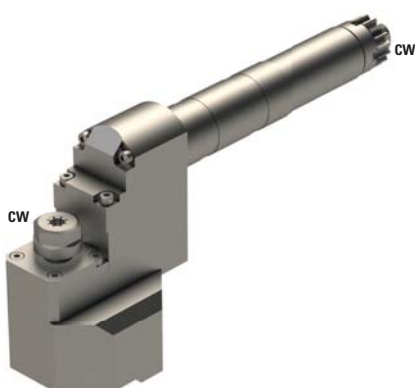
M212-C
M212-V
M216-C
M216-V
M312-III
M312-V
M316-III
M316-V


Note :

Position T06-T09



GSE-507-2X



	ER11
---	------

	1:2
---	-----

RPM max.	16'000
----------	--------

Machines Types

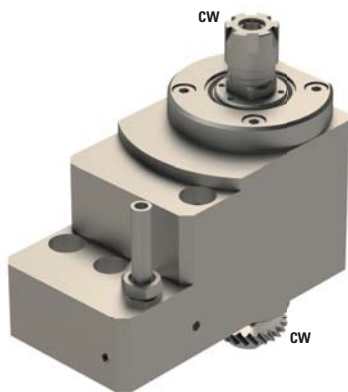
M212-C
M212-V
M216-C
M216-V
M312-III
M312-V
M316-III
M316-V


Note :

Position T06-T09



MSC-106-2X



 ER11

 1:2

RPM max. 12'000

Machines Types

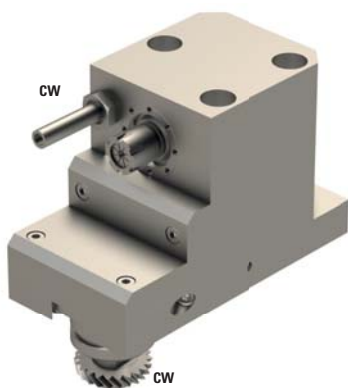
M212-C
M212-V
M216-C
M216-V
M312-III
M312-V
M316-III
M316-V
M16-4M5
M16-4M8


Note :

Position T20-T29



MSE-106-3X



 ER11

 1:3

RPM max. 18'000

Machines Types

M212-C
M212-V
M216-C
M216-V
M312-III
M312-V
M316-III
M316-V
M16-4M5
M16-4M8



Note :

Position T20-T29



MSE-107-2X



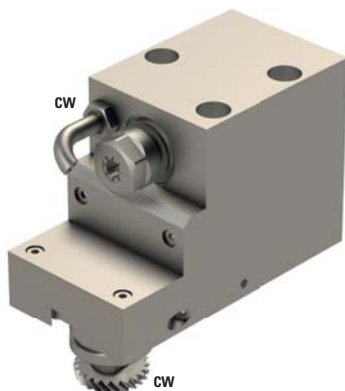
	ER11
	1:2
RPM max.	12'000
Machines Types	M212-C M212-V M216-C M216-V M312-III M312-V M316-III M316-V M16-4M5 M16-4M8



Note :

Position T20-T29



MSE106KM2X-II



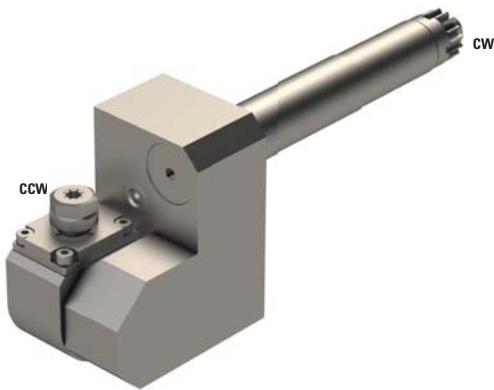
	ER11
	1:2
RPM max.	12'000
Machines Types	M212-C M212-V M216-C M216-V M312-III M312-V M316-III M316-V M16-4M5 M16-4M8


Note :

Position T20-T29



GSA-407



 ER11

 1:2.5

RPM max. 20'000 Max.

Machines Types

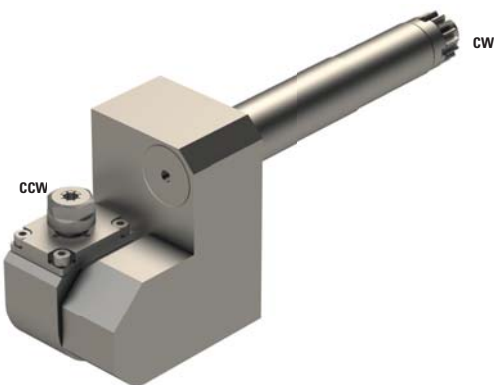
M212-C
M212-V
M216-C
M216-V
M312-III
M312-V
M316-III
M316-V


Note :

Position T06-T09
Need 2 positions
Adjustable 0°-180°



GSA-507



 ER11

 1:1

RPM max. 8'000

Machines Types

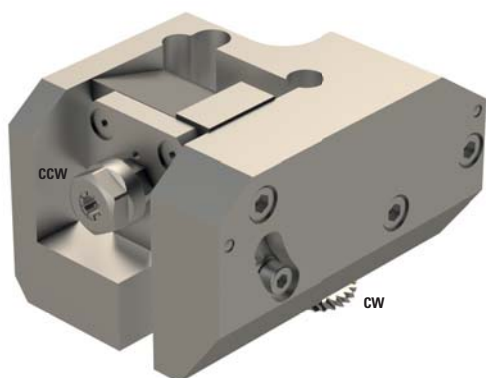
M212-C
M212-V
M216-C
M216-V
M312-III
M312-V
M316-III
M316-V


Note :

Position T06-T09
Need 2 positions
Adjustable 0°-180°



MSA-103



	ER11
---	------

	1:1
---	-----

RPM max.	6'000
----------	-------

Machines Types

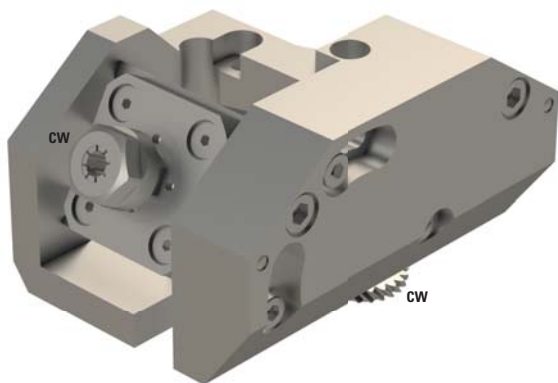
M212-C
M212-V
M216-C
M216-V
M312-III
M312-V
M316-III
M316-V
M16-4M5
M16-4M8


Note :

Position T20-T29
Adjustable 0°-30°



MSA-203



	ER11
---	------

	1:1
---	-----

RPM max.	6'000
----------	-------

Machines Types

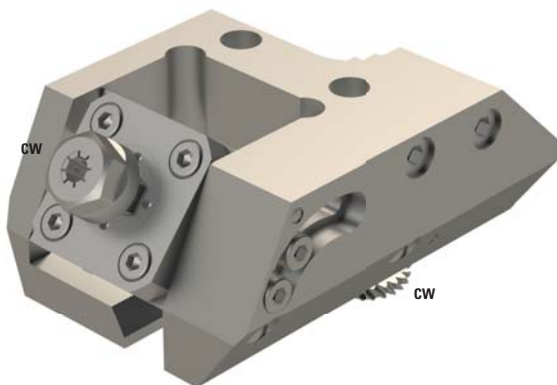
M212-C
M212-V
M216-C
M216-V
M312-III
M312-V
M316-III
M316-V
M16-4M5
M16-4M8


Note :

Position T20-T29
Adjustable 30°-60°



MSA-303



 ER11

 1:1

RPM max. 6'000

Machines Types

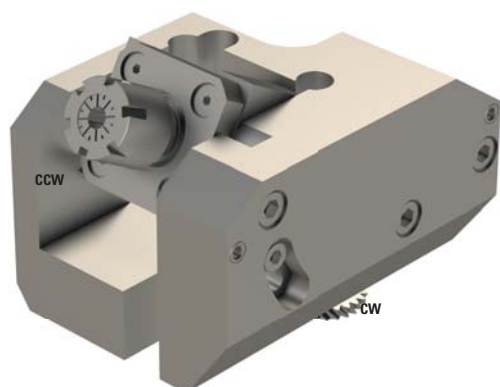
M212-C
M212-V
M216-C
M216-V
M312-III
M312-V
M316-III
M316-V
M16-4M5
M16-4M8


Note :

Position T20-T29
Adjustable 45°-90°



MSA-103-ER16



 ER16

 1:1

RPM max. 6'000

Machines Types

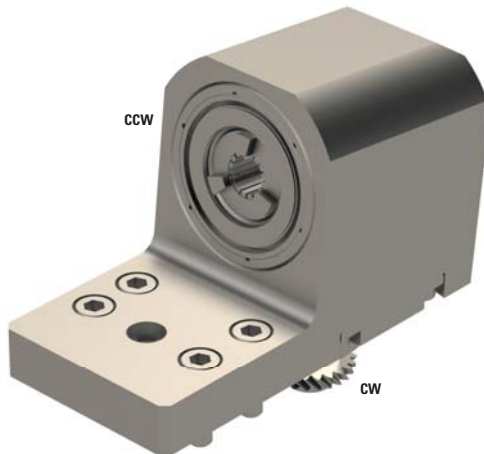
M212-C
M212-V
M216-C
M216-V
M312-III
M312-V
M316-III
M316-V
M16-4M5
M16-4M8


Note :

Position T20-T29
Adjustable 0°-30°



MSA-106



	ER16
---	------

	1:1
---	-----

RPM max.	6'000
----------	-------

Machines Types

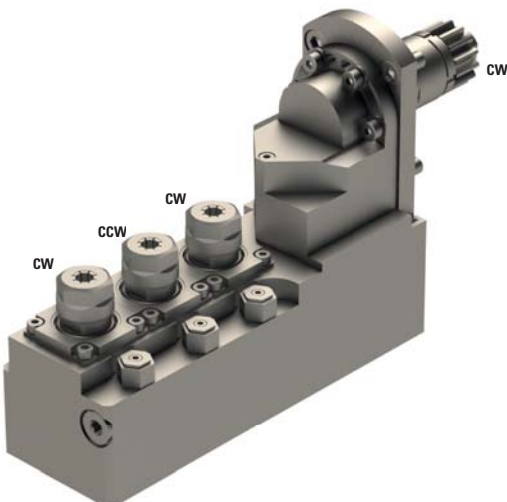
M212-C
M212-V
M216-C
M216-V
M312-III
M312-V
M316-III
M316-V
M16-4M5
M16-4M8


Note :

Position T20-T29
Fixe on 6°



GSA-607



	3xER11
---	--------

	1:1
---	-----

RPM max.	8'000
----------	-------

Machines Types

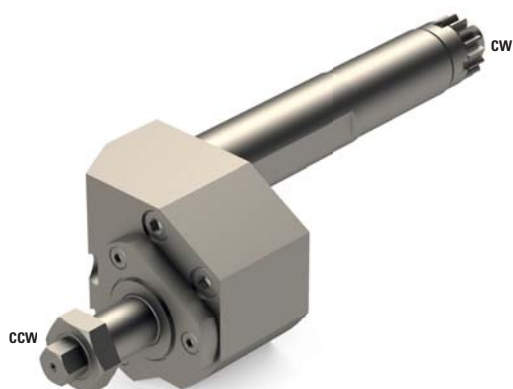
M16-4M5
M16-4M8


Note :

Position T06-T09
Need 2 positions
Adjustable 0°-30°



GSS-250



 16

 2:1

RPM max. 8'000

Machines Types

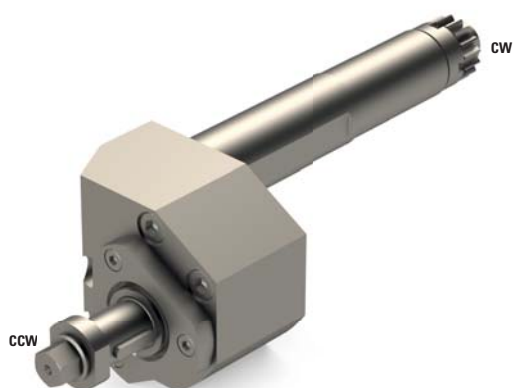
M212-C
M212-V
M216-C
M216-V
M312-III
M312-V
M316-III
M316-V


Note :

Position T06-T09
Need 2 positions
Max. tool Ø50 mm



GSS-250-15



 15

 2:1

RPM max. 8'000

Machines Types

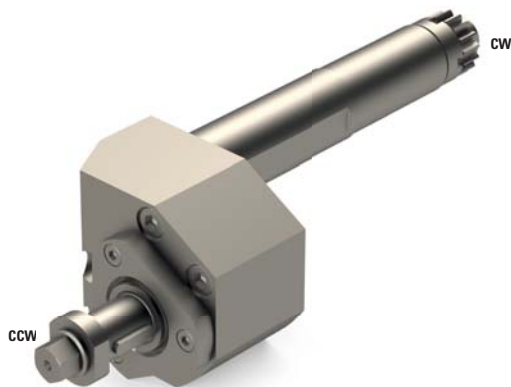
M212-C
M212-V
M216-C
M216-V
M312-III
M312-V
M316-III
M316-V


Note :


Position T06-T09
Need 2 positions
Max. tool Ø50 mm



GSS-250-13



	13
---	----

	2:1
---	-----

RPM max.	8'000
----------	-------

Machines Types

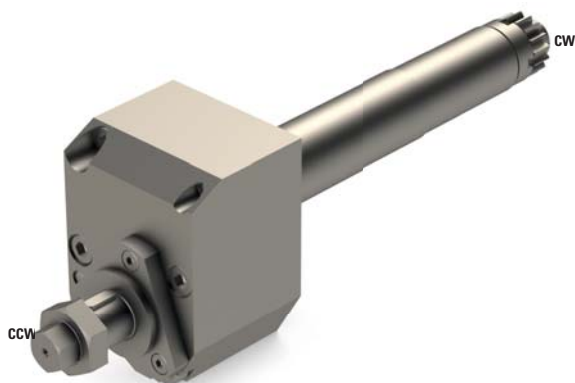
M212-C
M212-V
M216-C
M216-V
M312-III
M312-V
M316-III
M316-V


Note :

Position T06-T09
Need 2 positions
Max. tool Ø50 mm



GSS-450



	16
---	----

	4:1
---	-----

RPM max.	8'000
----------	-------

Machines Types

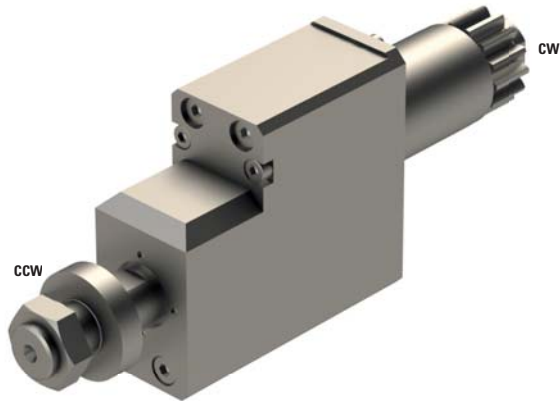
M212-C
M212-V
M216-C
M216-V
M312-III
M312-V
M316-III
M316-V

Note :

Position T06-T09
Need 2 positions
Max. tool Ø50 mm



GSS507

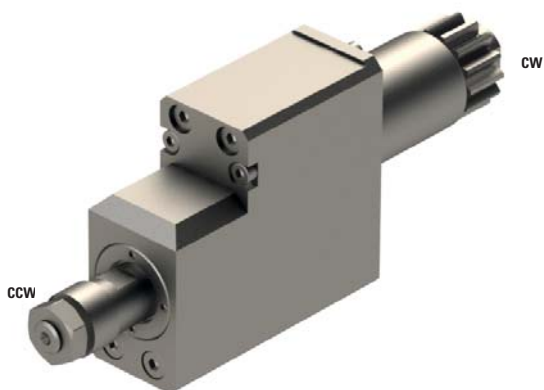



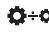
	13
	1:1
RPM max.	6'000
Machines Types	M16-4M5 M16-4M8
Note :	

Position T06-T09
Max. tool Ø50 mm
Max. thickness 6 mm




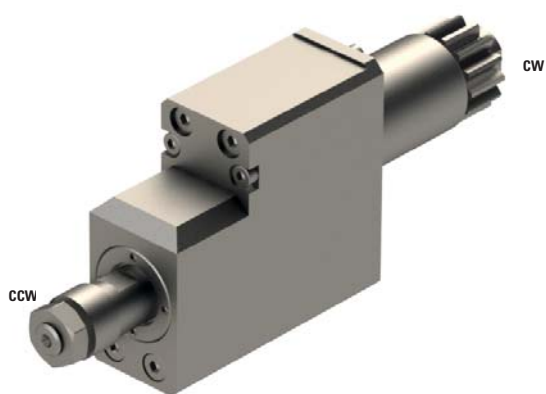
GSS507-08



	8
	1:1
RPM max.	6'000
Machines Types	M16-4M5 M16-4M8
Note :	

Position T06-T09
Max. tool Ø50 mm
Max. thickness 3 mm





GSS507-10 10 1:1

RPM max. 6'000

Machines Types M16-4M5
M16-4M8**Note :**Position T08
Max. tool Ø50 mm
Max. thickness 3 mm

GSE-509



	10
	1.6:1
RPM max.	8'000

Machines Types

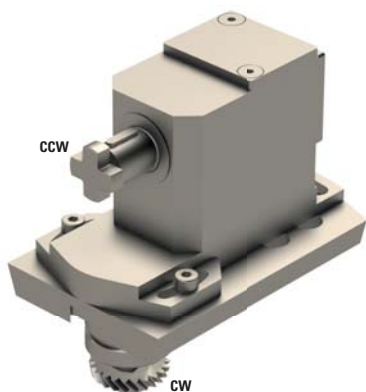
M212-C
 M212-V
 M216-C
 M216-V
 M312-III
 M312-V
 M316-III
 M316-V

Note :

Position T06-T09



MSF-130



	13
	1:1
RPM max.	6'000

Machines Types

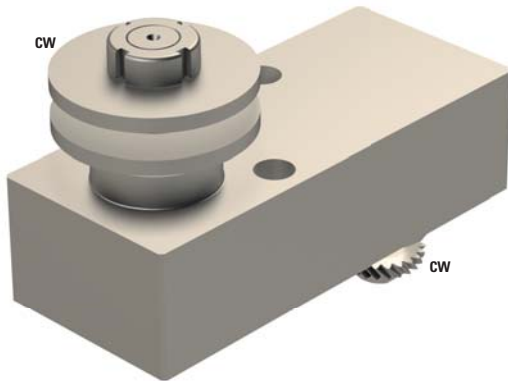
M212-C
 M212-V
 M216-C
 M216-V
 M312-III
 M312-V
 M316-III
 M316-V
 M16-4M5
 M16-4M8


Note :

Position T20-T29
 Adjustable $\pm 20^\circ$
 Max. tool $\varnothing 59$ mm



MSP-106



	13
---	----

	1:1
---	-----

RPM max.	6'000
-----------------	-------

Machines Types

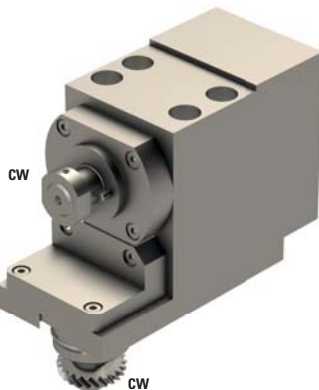
M212-C
M212-V
M216-C
M216-V
M312-III
M312-V
M316-III
M316-V
M16-4M5
M16-4M8


Note :

Position T20-T29



MSP-130



	13
---	----

	1:3
---	-----

RPM max.	18'000
-----------------	--------

Machines Types

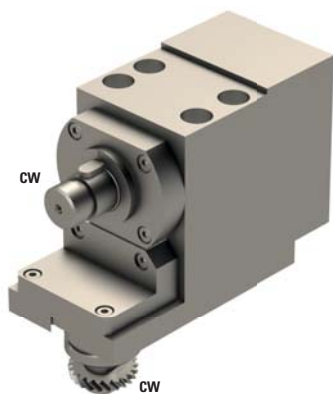
M212-C
M212-V
M216-C
M216-V
M312-III
M312-V
M316-III
M316-V
M16-4M5
M16-4M8


Note :

Position T20-T29
Max. tool Ø58 mm



MSP-160



 16

 1:3

RPM max. 18'000

Machines Types

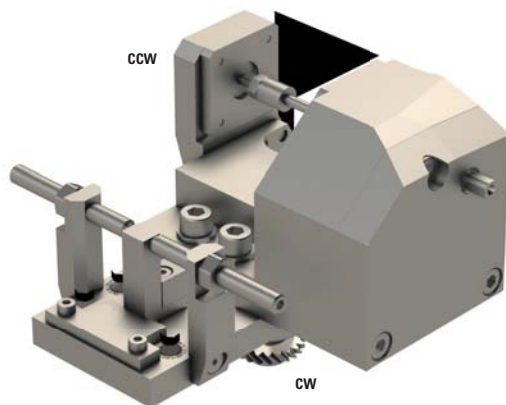
- M212-C
- M212-V
- M216-C
- M216-V
- M312-III
- M312-V
- M316-III
- M316-V
- M16-4M5
- M16-4M8


Note :

Position T20-T29
Max. tool Ø58 mm



MSH-133-035



 3.5

 1:0.762

RPM max. 4572

Machines Types

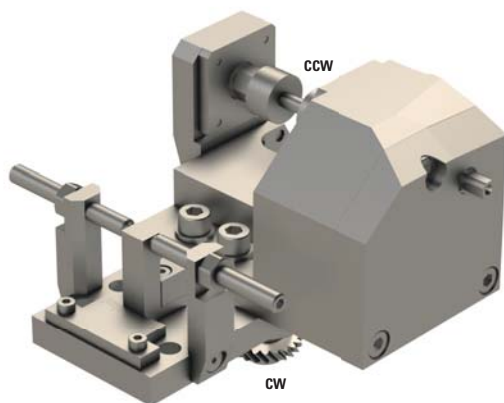
M212-C
M212-V
M216-C
M216-V
M312-III
M312-V
M316-III
M316-V


Note :

Position T20-T29
Adjustable $\pm 10^\circ$



MSH-133-050



 5

 1:0.762

RPM max. 4572

Machines Types

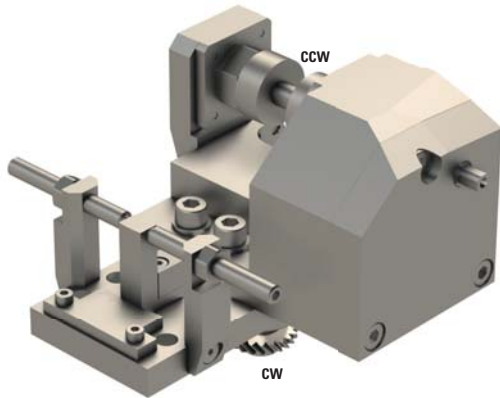
M212-C
M212-V
M216-C
M216-V
M312-III
M312-V
M316-III
M316-V


Note :

Position T20-T29
Adjustable $\pm 10^\circ$



MSH-133-080



 8

 1:0.762

RPM max. 4572

Machines Types

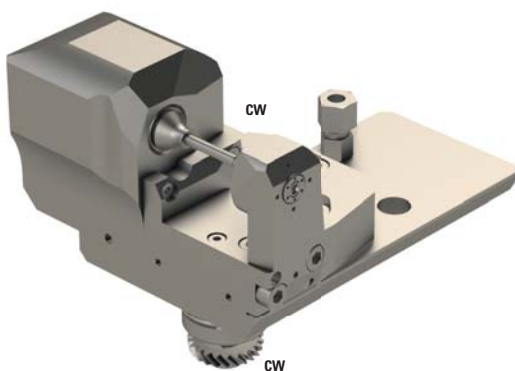
M212-C
M212-V
M216-C
M216-V
M312-III
M312-V
M316-III
M316-V


Note :

Position T20-T29
Adjustable $\pm 10^\circ$



MSH110-035



 3.5

 1:1

RPM max. 6000

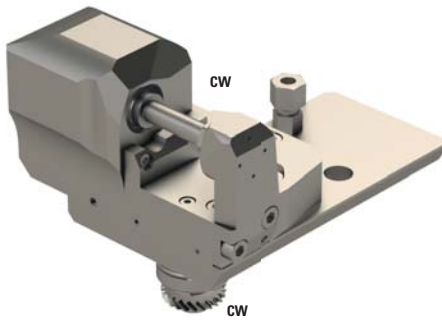
Machines Types M16-4M5


Note :

Position T20-T29
Adjustable 0° to 10°



MSH110-080



	8
---	---

	1:1
---	-----

RPM max.	6000
-----------------	------

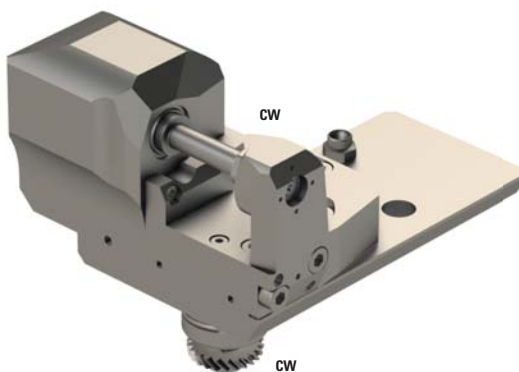
Machines Types	M16-4M5
-----------------------	---------


Note :	
---------------	--

Position T20-T29
Adjustable 0° to 10°



MSH210-035



	3.5
---	-----

	13:11
---	-------

RPM max.	8'000
-----------------	-------

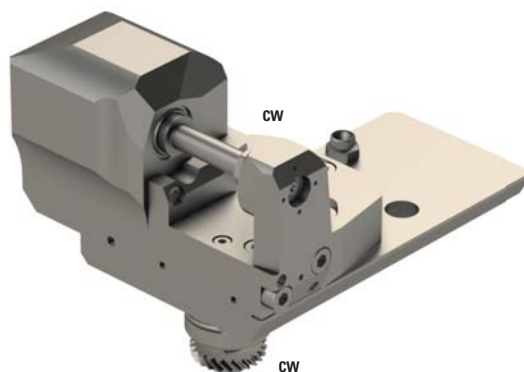
Machines Types	M16-4M5 M16-4M8
-----------------------	--------------------


Note :	
---------------	--

Position T20-T29
Adjustable 0° to 10°



MSH210-080



 8

 13:11

RPM max. 8'000

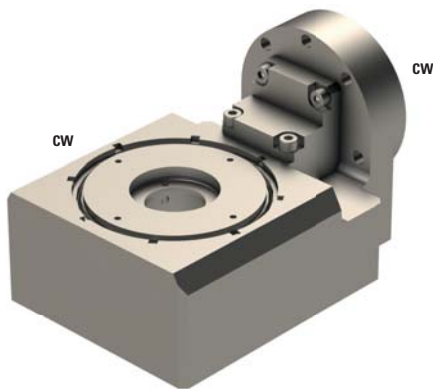
Machines Types M16-4M5
M16-4M8

Note :

Position T20-T29
Adjustable 0° to 10°



LSW-315



-



1:1

RPM max.

6'000

Machines Types

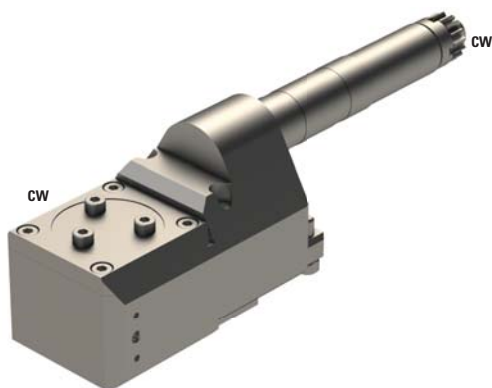
M212-C
M212-V
M216-C
M216-V
M312-III
M312-V
M316-III
M316-V

Note :

Position asche B
Adjustable $\pm 15^\circ$
Max. $\varnothing 10.8$ mm
Schwanog cutter head SWG-192236, Z=6, $\varnothing 11$ mm
Gloor cutter head 501-0001, Z=6, $\varnothing 11$ mm
Utilis cutter head 137600/139055, Z=9 or Z=12, $\varnothing 12$ mm



LSW-424



-



1:1

RPM max.

8'000

Machines Types

M212-C
M212-V
M216-C
M216-V
M312-III
M312-V
M316-III
M316-V



Note :

Position T08-T09
Adjustable $\pm 10^\circ$
Schwanog cutter head SWG-196617, Z=5, $\varnothing 6$ mm
Gloor cutter head 501-0002, Z=6, $\varnothing 12$ mm
Utilis cutter head 137876/137568, Z=9 or Z=12, $\varnothing 12$ mm



LSW-424-15



	-
	1:1
RPM max.	8'000

Machines Types

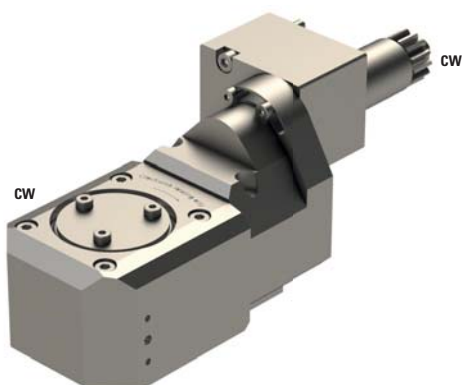
M212-C
 M212-V
 M216-C
 M216-V
 M312-III
 M312-V
 M316-III
 M316-V



Note :

Position T08-T09
 Adjustable $\pm 15^\circ$
 Schwanog cutter head SWG-196617, Z=5, $\varnothing 6$ mm
 Gloor cutter head 501-0002, Z=6, $\varnothing 12$ mm
 Utilis cutter head 137876/137568, Z=9 or Z=12, $\varnothing 12$ mm



LSW-424-II



	-
	1:1
RPM max.	8'000

Machines Types

M16-4M8



Note :

Position T08-T09
 Adjustable $\pm 15^\circ$
 Schwanog cutter head SWG-196617, Z=5, $\varnothing 6$ mm
 Gloor cutter head 501-0002, Z=6, $\varnothing 12$ mm
 Utilis cutter head 137876/137568, Z=9 or Z=12, $\varnothing 12$ mm



GSW-160



	-
	1:1
RPM max.	6'000
Machines Types	M32-4M5 M32-4M8
Note :	

Position T06-T07
 Adjustable 0°-16°
 GLOOR cutter head, Z=3, Ø12 mm
 SCHWANOG cutter head, Z=6, Ø12 mm
 HORN cutter head, Z=6, Ø11 mm



GSW-160

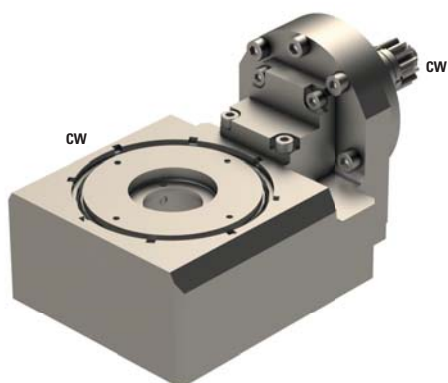



	-
	1:1
RPM max.	6'000
Machines Types	M32-4M5 M32-4M8
Note :	

Position T06-T07
 Adjustable 0°-16°
 GLOOR cutter head, Z=3, Ø12 mm
 SCHWANOG cutter head, Z=6, Ø12 mm
 HORN cutter head, Z=6, Ø11 mm



GSW-251

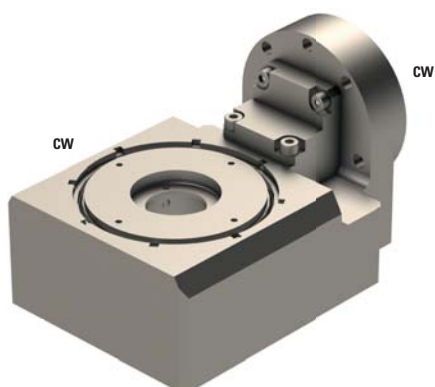



	-
	3/2
RPM max.	5'333.3
Machines Types	M16-4M5
Note :	

Position asche B
 Adjustable $\pm 25^\circ$
 Max. $\varnothing 10.8$ mm
 Schwanog cutter head SWG-196617, Z=5, $\varnothing 6$ mm
 Gloor cutter head 501-0003, Z=5, $\varnothing 6$ mm
 Utilis cutter head 138657, Z=9 or Z=7, $\varnothing 6$ mm



GSW-261

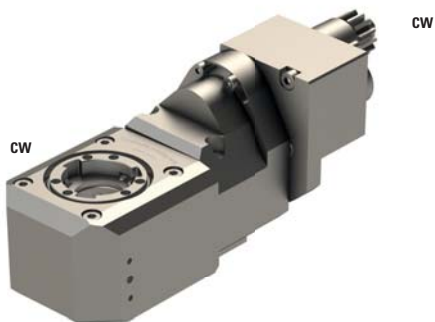


	-
	3/2
RPM max.	5'333.3
Machines Types	M16-4M8
Note :	

Position asche B
 Adjustable $\pm 25^\circ$
 Max. $\varnothing 10.8$ mm
 Schwanog cutter head SWG-196617, Z=5, $\varnothing 6$ mm
 Gloor cutter head 501-0003, Z=5, $\varnothing 6$ mm
 Utilis cutter head 138657, Z=9 or Z=7, $\varnothing 6$ mm



LSW-420



	-
	1:1
RPM max.	8'000
Machines Types	M16-4M5
Note :	

Position T08-T09
 Adjustable $\pm 16^\circ$
 Schwanog cutter head SWG-192236, Z=6, $\varnothing 11$ mm
 Gloor cutter head 501-0001, Z=6, $\varnothing 11$ mm
 Utilis cutter head 137600/139055, Z=9 or Z=12, $\varnothing 12$ mm



LSW-420-DROITE

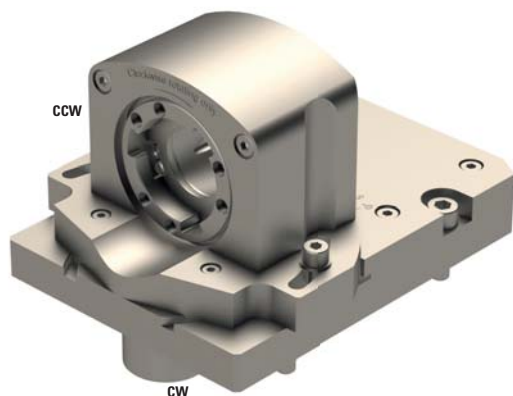



	-
	1:1
RPM max.	8'000
Machines Types	M16-4M5
Note :	

Position T08-T09
 Adjustable $\pm 16^\circ$
 Schwanog cutter head SWG-192236, Z=6, $\varnothing 11$ mm
 Gloor cutter head 501-0001, Z=6, $\varnothing 11$ mm
 Utilis cutter head 137600/139055, Z=9 or Z=12, $\varnothing 12$ mm



MSW-102



 -

 1:1

RPM max. 6'000

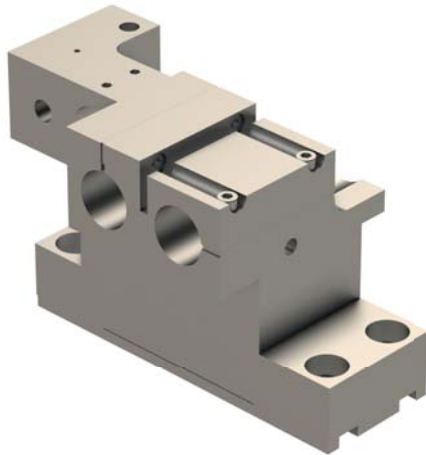
Machines Types M16-4M5
M16-4M8

Note :

Position T20-T29
GLOOR cutter head MSW-102-FPGLO, Z=3, Ø12 mm
SCHWANOG cutter head MSW-102-FPSWG, Z=6, Ø12 mm
HORN cutter head MSW-102-FPHO-II, Z=6, Ø11 mm
GLOOR cutter head MSW-102-FPGLO-III, Z=3, Ø8 mm
HORN cutter head MSW-102-FPHO-DEC-II, Z=6, Ø11 mm



856-003-OF025



Ø 2x25+1x10

⚙️ -

RPM max. -

Machines Types

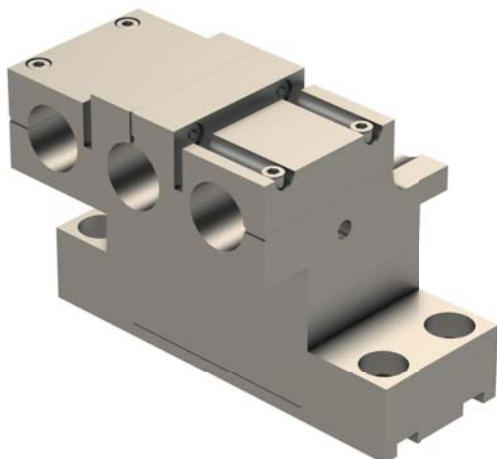
M212-C
M212-V
M216-C
M216-V
M312-III
M312-V
M316-III
M316-V
M16-4M5
M16-4M8

Note :

Replace the original back tool post
Coolant on 2xØ25 mm and 1xØ10 mm



856-003-OF010



Ø 3x25.4

⚙️ -

RPM max. -

Machines Types

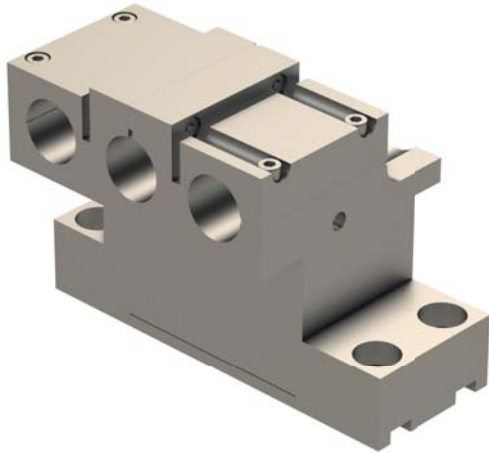
M212-C
M212-V
M216-C
M216-V
M312-III
M312-V
M316-III
M316-V
M16-4M5
M16-4M8

Note :

Replace the original back tool post



856-003-OF015



Ø	3x25
---	------

⚙️	-
----	---

RPM max.	-
----------	---

Machines Types

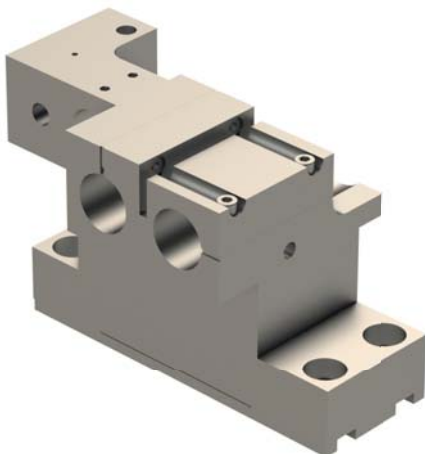
M212-C
 M212-V
 M216-C
 M216-V
 M312-III
 M312-V
 M316-III
 M316-V
 M16-4M5
 M16-4M8

Note :

Replace the original back tool post



856-003-OF020



Ø	2x25.4+1x10
---	-------------

⚙️	-
----	---

RPM max.	-
----------	---

Machines Types

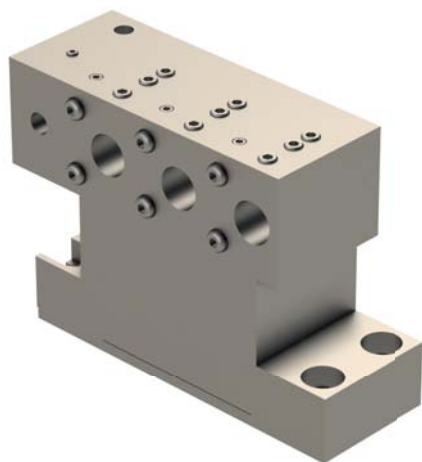
M212-C
 M212-V
 M216-C
 M216-V
 M312-III
 M312-V
 M316-III
 M316-V
 M16-4M5
 M16-4M8

Note :

Replace the original back tool post
 Coolant on 2xØ25.4 mm and 1xØ10 mm



856-003-OF110



∅ 3x19.05+1x10

⚙️ -

RPM max. -

Machines Types

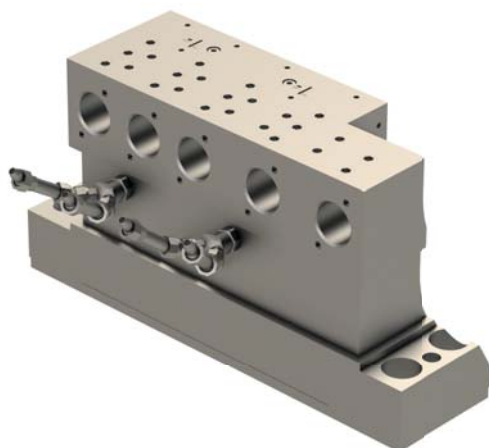
M212-C
M212-V
M216-C
M216-V
M312-III
M312-V
M316-III
M316-V
M16-4M5
M16-4M8

Note :

Replace the original back tool post



864-615-OF190



∅ 5x19.05

⚙️ -

RPM max. -

Machines Types

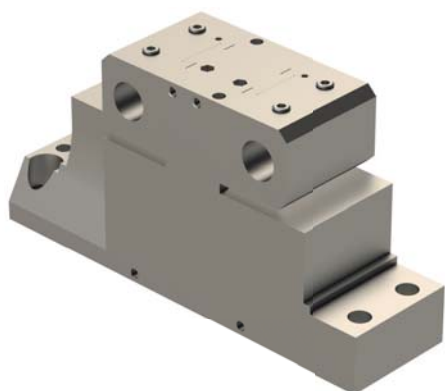
M16-4M5
M16-4M8

Note :

Replace the back tool post
For high spindle Meyrat



864-619-OF190



Ø 2x19.05

⚙️ -

RPM max. -

Machines Types M16-4M5
M16-4M8

Note :

Replace the back tool post
For high spindle Meyrat



GDF901



Ø 19.05

⚙️ -

RPM max. -

Machines Types M212-C
M212-V
M216-C
M216-V
M312-III
M312-V
M316-III
M316-V

Note :

Position T06-T09



GDF901-HF



∅	25
---	----

⚙️	-
----	---

RPM max.	-
----------	---

Machines Types

M212-C
M212-V
M216-C
M216-V
M312-III
M312-V
M316-III
M316-V

Note :

Position T06-T09
For high frequenz spindle



GDF901-HF22



∅	22
---	----

⚙️	-
----	---

RPM max.	-
----------	---

Machines Types

M212-C
M212-V
M216-C
M216-V
M312-III
M312-V
M316-III
M316-V

Note :

Position T06-T09
For high spindle



GDF901-HF-20



Ø 20

⚙️ -

RPM max. -

Machines Types

M212-C
M212-V
M216-C
M216-V
M312-III
M312-V
M316-III
M316-V

Note :

Position T06-T09
For high spindle Meyrat



GDF902



Ø 2x19.05

⚙️ -

RPM max. -

Machines Types

M212-C
M212-V
M216-C
M216-V
M312-III
M312-V
M316-III
M316-V

Note :

Position T06-T09



GDF901-S1X6



∅	6
---	---

⚙️	-
----	---

RPM max.	-
----------	---

Machines Types

M212-C
M212-V
M216-C
M216-V
M312-III
M312-V
M316-III
M316-V

Note :

Position T06-T09



GDF901-S1X4



∅	4
---	---

⚙️	-
----	---

RPM max.	-
----------	---

Machines Types

M212-C
M212-V
M216-C
M216-V
M312-III
M312-V
M316-III
M316-V

Note :

Position T06-T09



GDF902-19



Ø 2x19.05

⚙️ -

RPM max. -

Machines Types

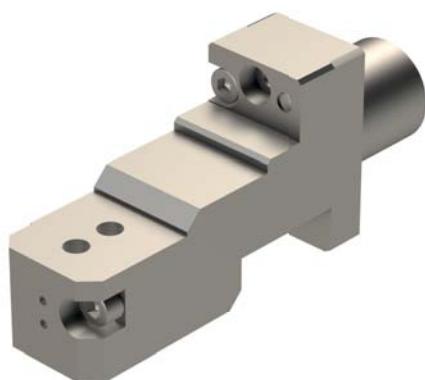
M212-C
M212-V
M216-C
M216-V
M312-III
M312-V
M316-III
M316-V

Note :

Position T06-T09



GDF9001S26



Ø 2x6

⚙️ -

RPM max. -

Machines Types

L12-1M7
M16-4M5
M16-4M8

Note :

Position back tool post top



GDF901-S2X4



∅	2x4
---	-----

⚙️	-
----	---

RPM max.	-
----------	---

Machines Types

M212-C
M212-V
M216-C
M216-V
M312-III
M312-V
M316-III
M316-V

Note :

Position T06-T09



GDF901-S2X6



∅	2x6
---	-----

⚙️	-
----	---

RPM max.	-
----------	---

Machines Types

M212-C
M212-V
M216-C
M216-V
M312-III
M312-V
M316-III
M316-V

Note :

Position T06-T09



GDF9001S24



Ø 2x4

⚙️ -

RPM max. -

Machines Types L12-1M7
M16-4M5
M16-4M8

Note :

Position back tool post top



GDF9001S24-II



Ø 2x4

⚙️ -

RPM max. -

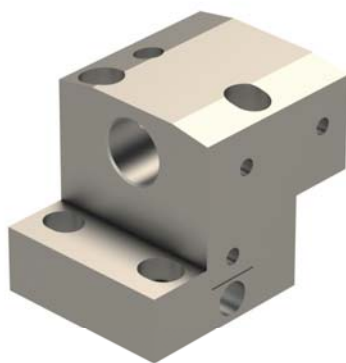
Machines Types L12-1M7
M16-4M5
M16-4M8

Note :

Position back tool post top
Adjustable ±0.2



VDF-101-R-S



∅	19.05
---	-------

⚙️	-
----	---

RPM max.	-
----------	---

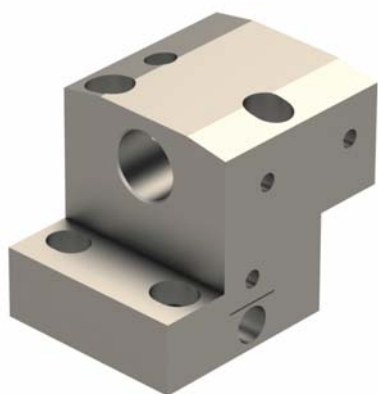
Machines Types	M212-C
	M212-V
	M216-C
	M216-V
	M312-III
	M312-V
	M316-III
	M316-V
	M16-4M5
	M16-4M8

Note :

Position T20-T29
Adjustable +8.5 mm



VDF-101-R-S-HF



∅	19.05
---	-------

⚙️	-
----	---

RPM max.	-
----------	---

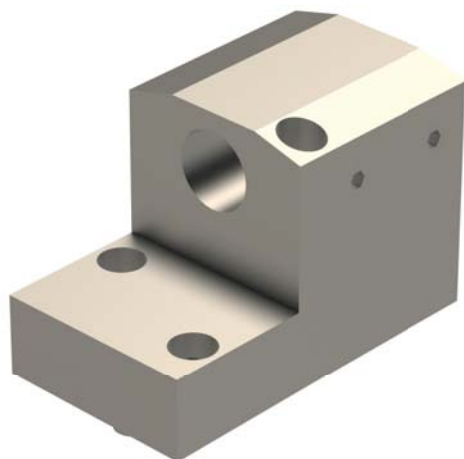
Machines Types	M212-C
	M212-V
	M216-C
	M216-V
	M312-III
	M312-V
	M316-III
	M316-V
	M16-4M5
	M16-4M8

Note :

Position T20-T29
Adjustable +8.5 mm



VDF-201



Ø 19.05

⚙️ -

RPM max. -

Machines Types

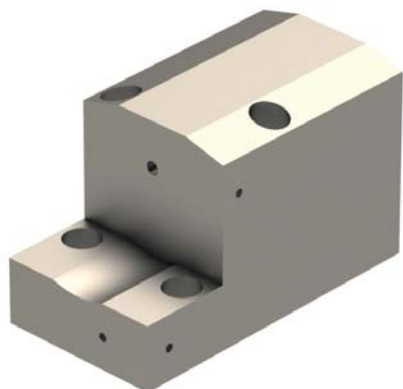
M212-C
M212-V
M216-C
M216-V
M312-III
M312-V
M316-III
M316-V
M16-4M5
M16-4M8

Note :

Position T20-T29



VDF-204



Ø 4

⚙️ -

RPM max. -

Machines Types

M212-C
M212-V
M216-C
M216-V
M312-III
M312-V
M316-III
M316-V
M16-4M5
M16-4M8

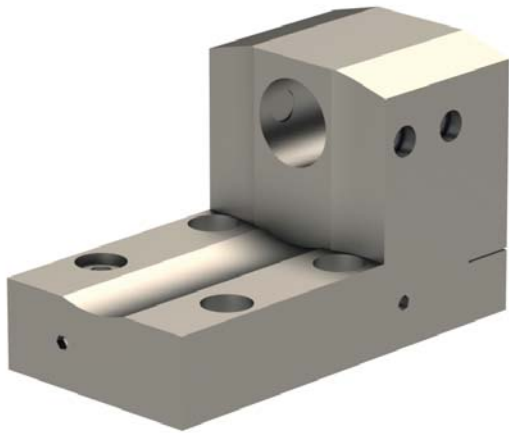
Note :

Position T20-T29
For high pressure 150 bars



INT

VDF205-HP



∅	19.05
---	-------

⚙️+⚙️	-
-------	---

RPM max.	-
----------	---

Machines Types

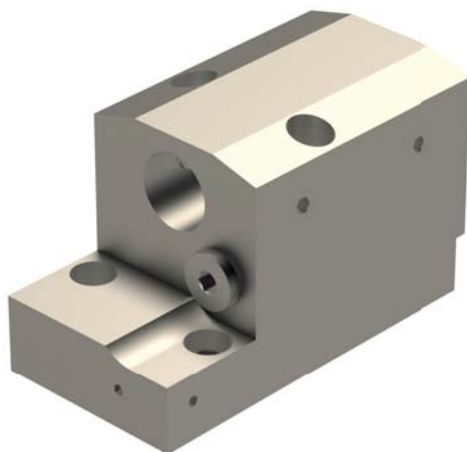
M212-C
M212-V
M216-C
M216-V
M312-III
M312-V
M316-III
M316-V
M16-4M5
M16-4M8

Note :

Position T20-T29
For high pressure 100 bars



VDF206-HP



∅	19.05
---	-------

⚙️+⚙️	-
-------	---

RPM max.	-
----------	---

Machines Types

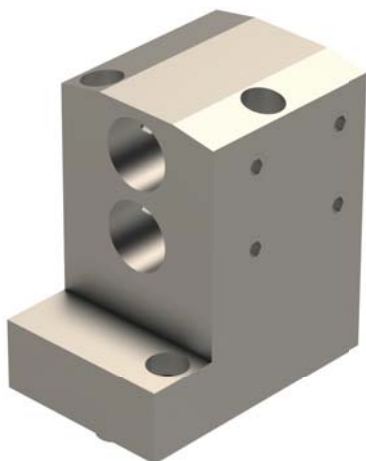
M212-C
M212-V
M216-C
M216-V
M312-III
M312-V
M316-III
M316-V
M16-4M5
M16-4M8

Note :

Position T20-T29
For high pressure 100 bars



VDF-401



Ø 2x19.05

⚙️ -

RPM max. -

Machines Types

M212-C
M212-V
M216-C
M216-V
M312-III
M312-V
M316-III
M316-V
M16-4M5
M16-4M8

Note :

Position T20-T29



VDF-501



Ø 19.05

⚙️ -

RPM max. -

Machines Types

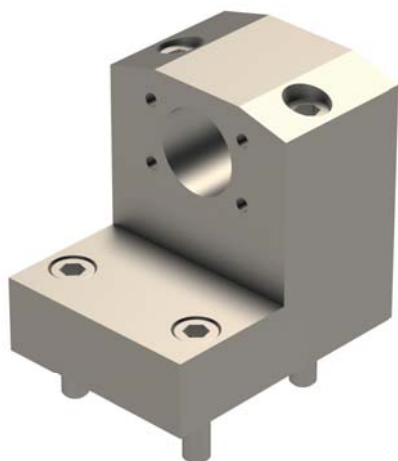
M212-C
M212-V
M216-C
M216-V
M312-III
M312-V
M316-III
M316-V
M16-4M5
M16-4M8

Note :

Position T20-T29



VDF-HF20



∅	20
---	----

⚙️	-
----	---

RPM max.	-
----------	---

Machines Types

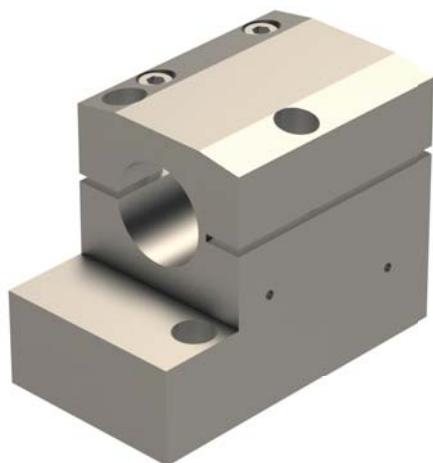
M212-C
M212-V
M216-C
M216-V
M312-III
M312-V
M316-III
M316-V
M16-4M5
M16-4M8

Note :

Position T20-T29
For high frequenz spindle Meyrat



VDF-HF25



∅	25.4
---	------

⚙️	-
----	---

RPM max.	-
----------	---

Machines Types

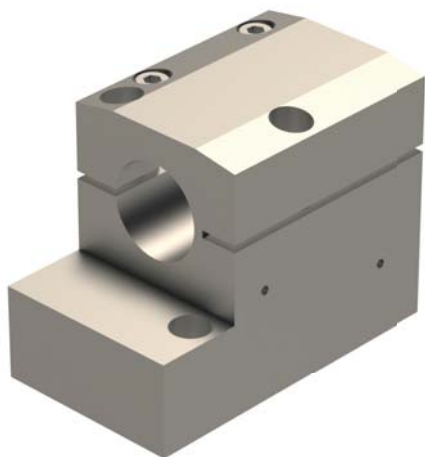
M212-C
M212-V
M216-C
M216-V
M312-III
M312-V
M316-III
M316-V
M16-4M5
M16-4M8

Note :

Position T20-T29
For high frequenz spindle



VDF-HF25-1



Ø 25

⚙️ -

RPM max. -

Machines Types

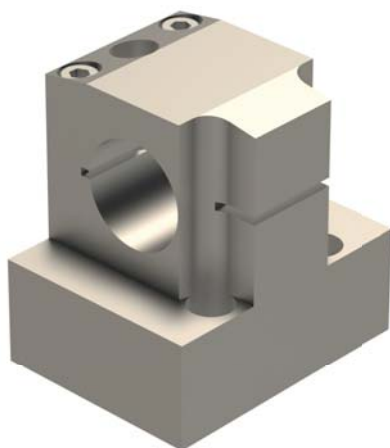
M212-C
M212-V
M216-C
M216-V
M312-III
M312-V
M316-III
M316-V
M16-4M5
M16-4M8

Note :

Position T20-T29
For high frequenz spindle



VDF-HF25-2



Ø 25

⚙️ -

RPM max. -

Machines Types

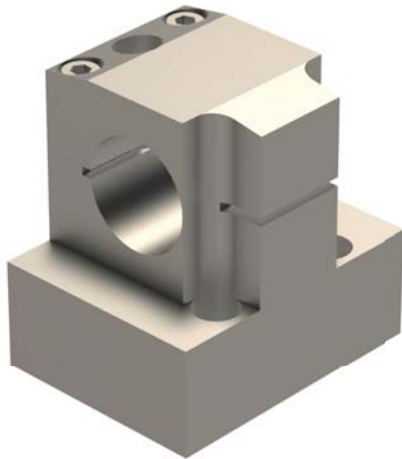
M212-C
M212-V
M216-C
M216-V
M312-III
M312-V
M316-III
M316-V
M16-4M5
M16-4M8

Note :

Position T20-T29
For high frequenz spindle



VDF-HF25-3



Ø	25.4
---	------

⚙️	-
----	---

RPM max.	-
----------	---

Machines Types

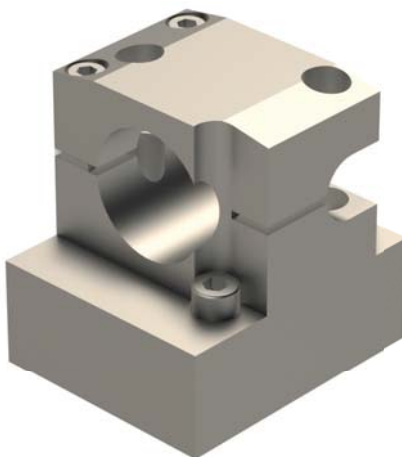
M212-C
M212-V
M216-C
M216-V
M312-III
M312-V
M316-III
M316-V
M16-4M5
M16-4M8

Note :

Position T20-T29
For high frequenz spindle



VDF-HF30



Ø	30
---	----

⚙️	-
----	---

RPM max.	-
----------	---

Machines Types

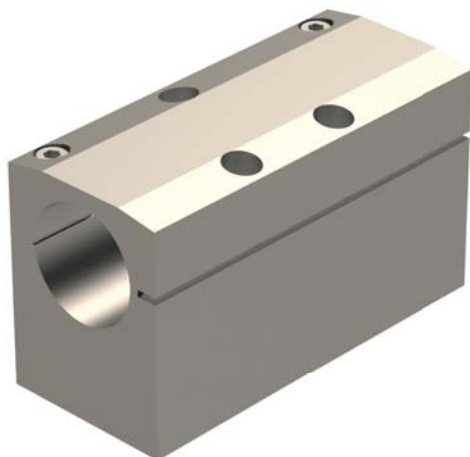
M212-C
M212-V
M216-C
M216-V
M312-III
M312-V
M316-III
M316-V
M16-4M5
M16-4M8

Note :

Position T20-T29
For high frequenz spindle IBAG



VDF-HF33



Ø	33
---	----

⚙️	-
----	---

RPM max.	-
----------	---

Machines Types	M212-C
	M212-V
	M216-C
	M216-V
	M312-III
	M312-V
	M316-III
	M316-V
	M16-4M5
M16-4M8	

Note :

Position T20-T29
 For high frequenz spindle IBAG



VDF701-IK



Ø	3x19.05
---	---------

⚙️	-
----	---

RPM max.	-
----------	---

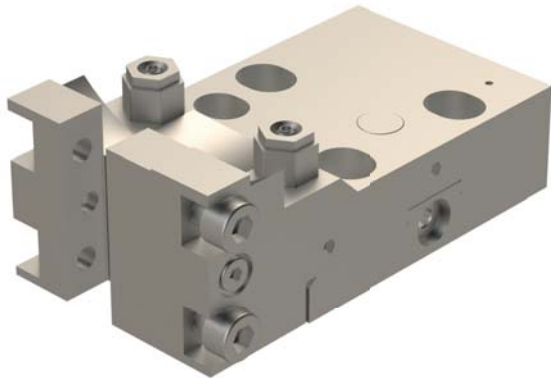
Machines Types	M212-C
	M212-V
	M216-C
	M216-V
	M312-III
	M312-V
	M316-III
	M316-V
	M16-4M5
M16-4M8	


Note :

Position T20-T29
 For high pressure 100 bars



792-VTF110-R-HP



	12x12
---	-------

	-
---	---

RPM max.	-
----------	---

Machines Types

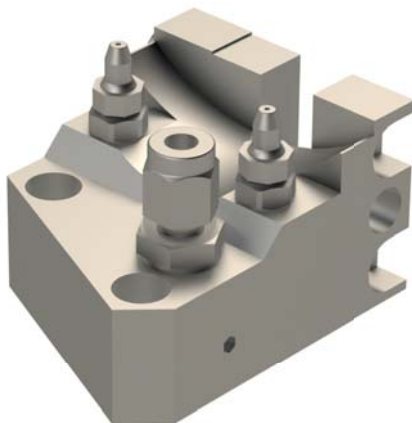
M212-C
M212-V
M216-C
M216-V
M312-III
M312-V
M316-III
M316-V
M16-4M5
M16-4M8


Note :

Position T20-T29
Pressure 100 Bars



VTF110-AR



	12
---	----

	-
---	---

RPM max.	-
----------	---

Machines Types

M212-C
M212-V
M216-C
M216-V
M312-III
M312-V
M316-III
M316-V
M16-4M5
M16-4M8

Note :

Position T20-T29



VTF1510



☑	2x10
---	------

⚙️⚙️	-
------	---

RPM max.	-
----------	---

Machines Types

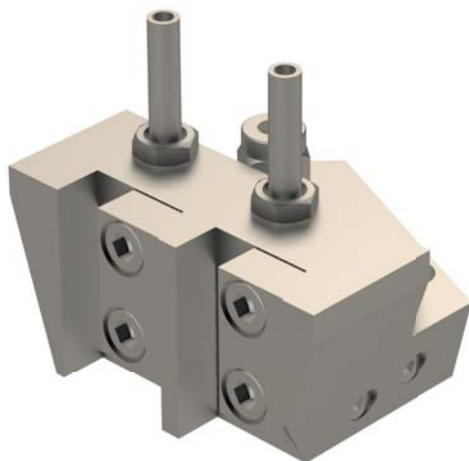
M212-C
 M212-V
 M216-C
 M216-V
 M312-III
 M312-V
 M316-III
 M316-V
 M16-4M5
 M16-4M8

Note :

Position T20-T29



VTF1510-D



☑	2x10
---	------

⚙️⚙️	-
------	---

RPM max.	-
----------	---

Machines Types

M212-C
 M212-V
 M216-C
 M216-V
 M312-III
 M312-V
 M316-III
 M316-V
 M16-4M5
 M16-4M8

Note :

Position T20-T29
 Possibility to mounting two tool holders on a turret site.
 Attention, no cooling on back spindle position when used
 not in double.



MDF107-IK



Ø	3xØ19.05
---	----------

⚙️+⚙️	-
-------	---

RPM max.	-
----------	---

Machines Types	M16-4M5 M16-4M8
-----------------------	--------------------

Note :	
---------------	--

Position T31-T34
Max. pressure 100 Bars



MDF-107-HFN



Ø	3xØ22
---	-------

⚙️+⚙️	-
-------	---

RPM max.	-
----------	---

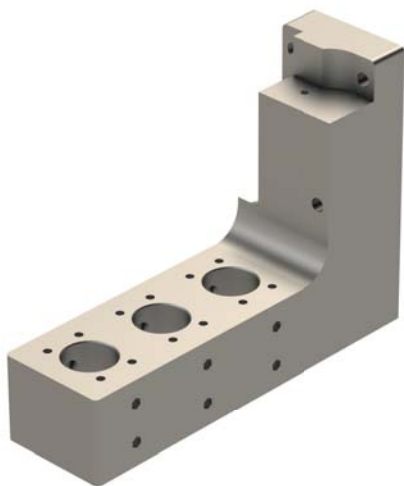
Machines Types	M16-4M5 M16-4M8
-----------------------	--------------------

Note :	
---------------	--

Position T31-T34
For high spindle



MDF107-MHF19



Ø	3xØ19.05
----------	----------

⚙️	-
-----------	---

RPM max.	-
-----------------	---

Machines Types	M16-4M5 M16-4M8
-----------------------	--------------------

Note :	
---------------	--

Position T31-T34
 For high spindle Meyrat



MDF-107-MHF20



Ø	3xØ20
----------	-------

⚙️	-
-----------	---

RPM max.	-
-----------------	---

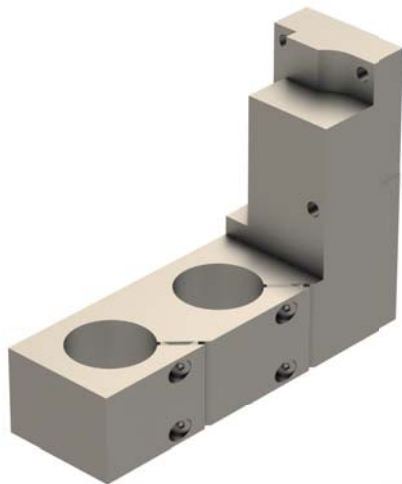
Machines Types	M16-4M5 M16-4M8
-----------------------	--------------------

Note :	
---------------	--

Position T31-T34
 For high spindle Meyrat



MDF-107-MHF30



Ø	2xØ30
---	-------

⚙️	-
----	---

RPM max.	-
----------	---

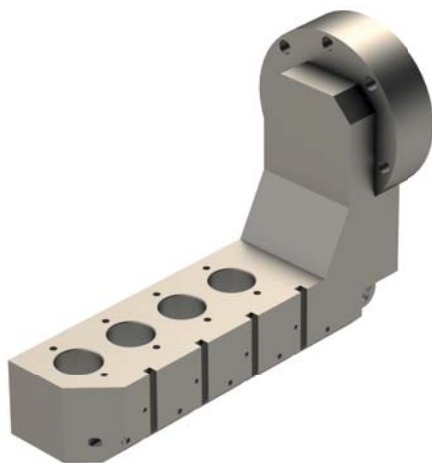
Machines Types	M16-4M5 M16-4M8
-----------------------	--------------------

Note :	
---------------	--

Position T31-T34
For high spindle Lehmann



MEU207-MHF



Ø	20
---	----

⚙️	-
----	---

RPM max.	-
----------	---

Machines Types	M16-4M5 M16-4M8
-----------------------	--------------------

Note :	
---------------	--

Position Axis B
For high frequenz spindle



MEU107



∅ 10

⚙️ -

RPM max. -

Machines Types M16-4M5
M16-4M8

Note :

Position Axis B
For high frequenz spindle

