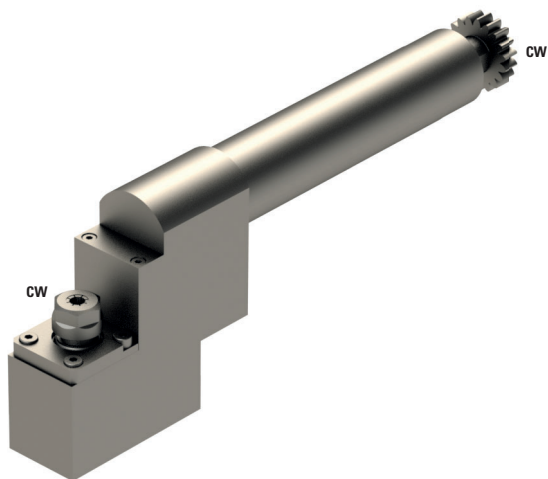



GSE-306-L-520



	ER11
---	------

	1:1
---	-----

RPM max.	6'000
----------	-------

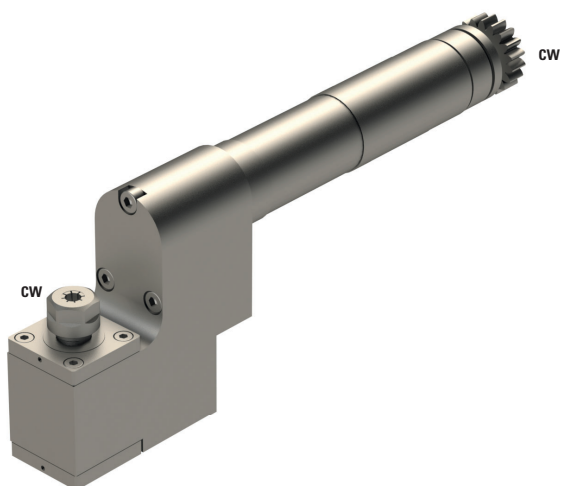
Machines Types	M220-V
	M232-III
	L20V
	M232-V
	L20VII
	M320-III
	M320-V
	L20VIII
L20X	
M332-III	
M220-III	
M332-V	
M32-4M5	
M32-4M8	


Note :

Position T08-T10



GSE-306-SE312



	ER11
---	------

	1:3
---	-----

RPM max.	18'000
----------	--------

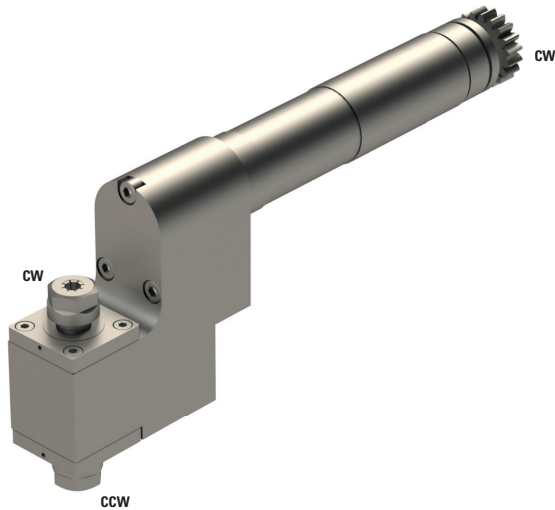
Machines Types	L20E-2M8	M220-V
	L20E-2M10	M232-III
	L20E-2M12	M232-V
	L20E-IX	M320-III
	L20V	M320-V
	L20VII	M332-III
	L20VIII	M332-V
	L20X	M32-4M5
	M220-III	M32-4M8


Note :

Position T08-T10



GSE-306-DE312



	2xER11
---	--------

	1:3
---	-----

RPM max.	18'000
-----------------	--------

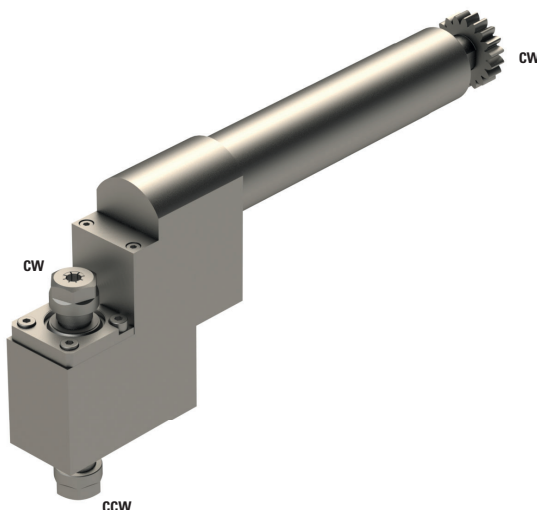
Machines Types	L20E2M8	M220-V
	L20E2M10	M232-III
	L20E-1M12	M232-V
	L20E-IX	M320-III
	L20V	M320-V
	L20VII	M332-III
	L20VIII	M332-V
	L20X	M32-4M5
	M220-III	M32-4M8


Note :

Position T08-T10



GSE-306-DE011



	2xER11
---	--------

	1:1
---	-----

RPM max.	6'000
-----------------	-------

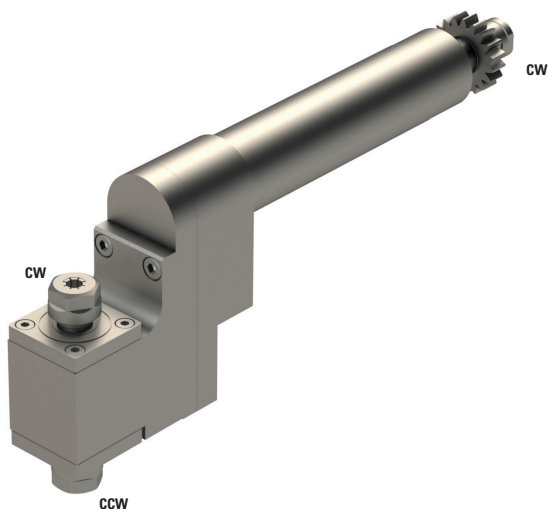
Machines Types	L20E2M8	M220-V
	L20E2M10	M232-III
	L20E-1M12	M232-V
	L20E-IX	M320-III
	L20V	M320-V
	L20VII	M332-III
	L20VIII	M332-V
	L20X	M32-4M5
	M220-III	M32-4M8


Note :

Position T08-T10



GSE-306-DE511

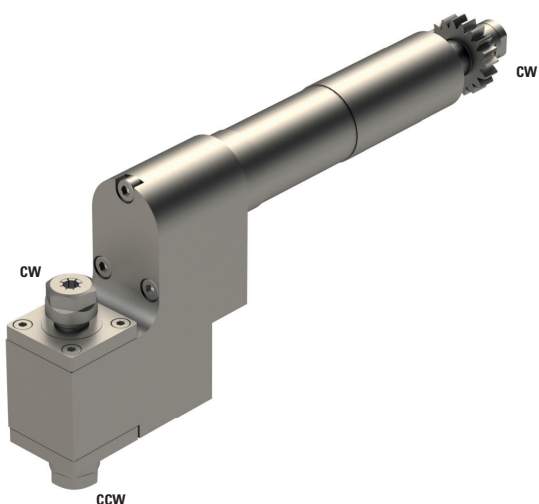


	2xER11
	1:1
RPM max.	6'000
Machines Types	L25-VII
Note :	

Position T08-T10



GSE-306-DE512

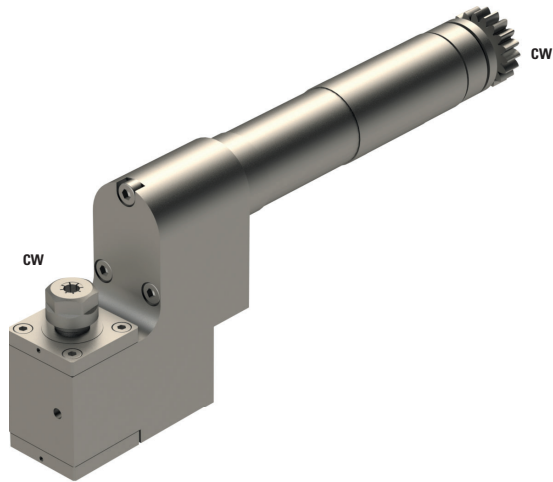



	2xER11
	1:3
RPM max.	18'000
Machines Types	L25-VII
Note :	

Position T08-T10



GSE-306-SE512



	ER11
---	------

	1:3
---	-----

RPM max.	18'000
----------	--------

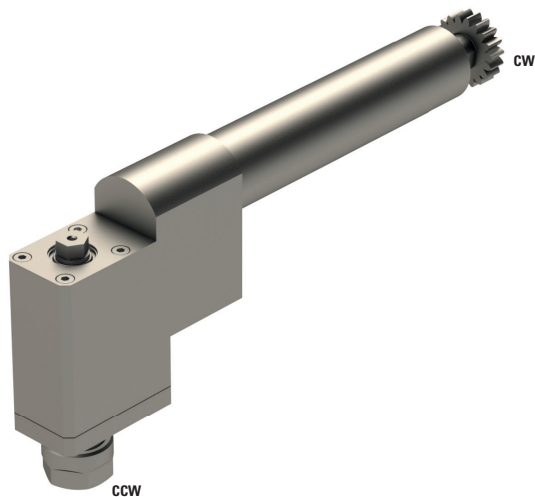
Machines Types	L25-VII
----------------	---------


Note :

Position T08-T10



GSE-316-GS



	ER16
---	------

	1:1
---	-----

RPM max.	6'000
----------	-------

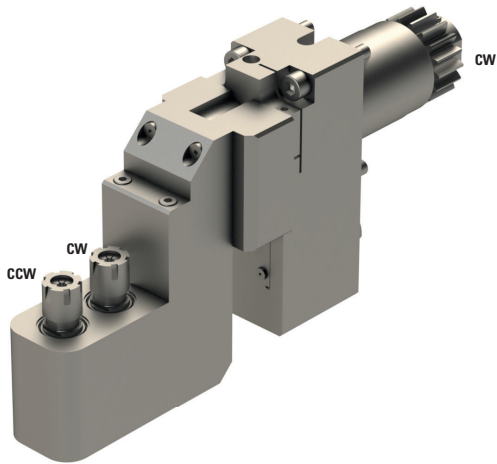
Machines Types	L20E2M8 L20E2M10 L20E-1M12 L20E-IX L20V L20VII L20VIII L20X M32-3M5 M32-3M3 M32-4M5 M32-4M8
----------------	--


Note :

Position T08-T10



CITIZEN6-GSE-208



 2xER08

 1:1

RPM max. 6'000

Machines Types

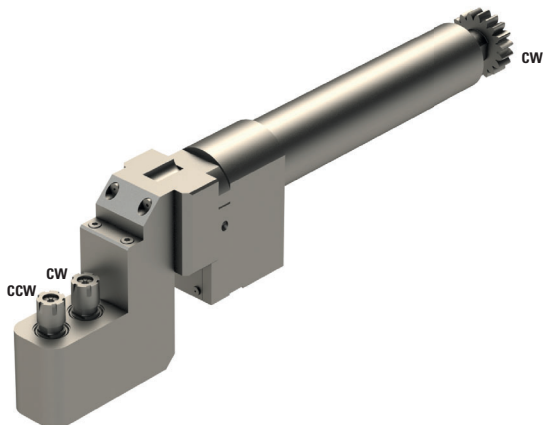
A232-VII
A32-VII
A320-VII
L20E-2M8
L20E-2M10
L20E-2M12
L20E-IX
L32-1M8
L32-1M10
L32-1M12


Note :

Position T08-T10
Adjustable $\pm 15^\circ$
Base CITIZEN6-PCR
Head GSE-208



CITIZEN7-GSE-208



 2xER08

 1:1

RPM max. 6'000

Machines Types

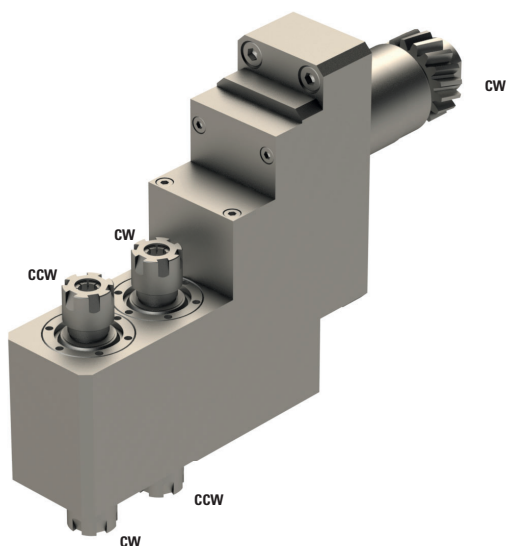
L20V
L20VII
L20VIII
L20X


Note :

Position T08-T10
Adjustable $\pm 15^\circ$
Base CITIZEN7-PCR
Head GSE-208



GSE-3107



	2xER11+2xER11
---	---------------

	1:1
---	-----

RPM max.	6'000
----------	-------

Machines Types

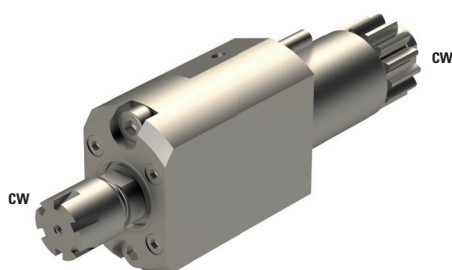
L20E2M8
L20E2M10
L20E-1M12
L20E-IX
L20V
L20VII
L20VIII
L20X


Note :

Position T13-T16 or GSE3210



GSE3407-HP



	ER11
---	------

	1:1
---	-----

RPM max.	3'900
----------	-------

Machines Types

L20E2M8
L20E2M10
L20E-1M12
L20E-IX


Note :

Position T21-T23



GSC-1010



 ER16

 1:1

RPM max. 6'000

Machines Types

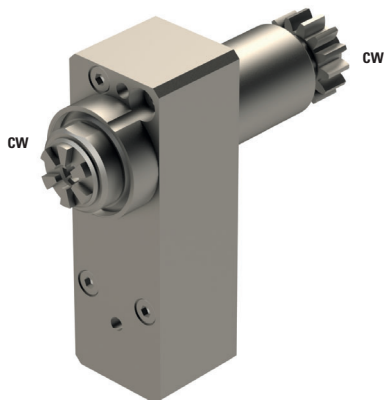
	M220-V
	M232-III
	M232-V
	M320-III
	M320-V
	M332-III
	M332-V
	M32-4M5
	M32-4M8


Note :

Position T08-T10



GSE-3307



 ER11

 1:3

RPM max. 24'000

Machines Types

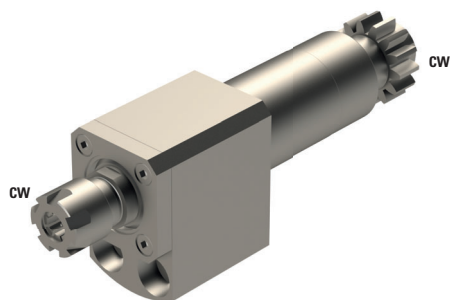
	A20-VII
	A20-3F7N


Note :

Position T31-34



GSC-907



	ER11
---	------

	1:1
---	-----

RPM max.	6'000
----------	-------

Machines Types

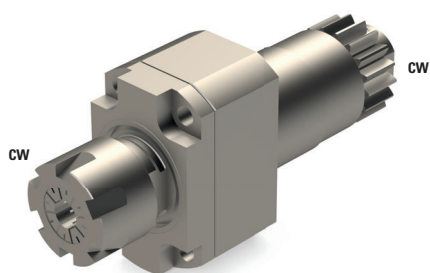
L20E2M8
L20E2M10
L20E-1M12
L20E-IX
L20V
L20VII
L20VIII
L20X
M32-3M5
M32-3M3
M32-4M5
M32-4M8


Note :

Position T08-T10



GSC-1113



	ER20
---	------

	1:1
---	-----

RPM max.	6'000
----------	-------

Machines Types

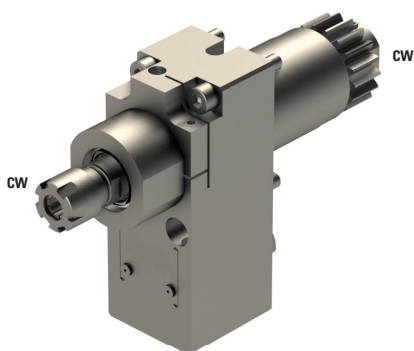
A232-VII
A32-VII
A320-VII
L20E2M8
L20E2M10
L20E-1M12
L20E-IX
L20V
L20VII
L20VIII
L20X
L32-1M8
L32-1M10
L32-1M12


Note :

Position T08-T10



CITIZEN6-GSC-007



 ER08

 1:1

RPM max. 6'000

Machines Types

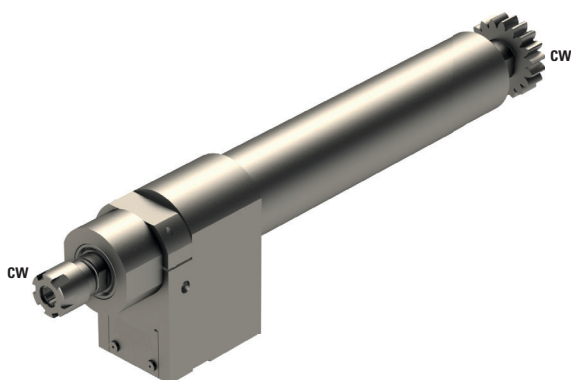
A232-VII
A32-VII
A320-VII
L20E-2M8
L20E-2M10
L20E-2M12
L20E-IX
L32-1M8
L32-1M10
L32-1M12


Note :

Position T08-T10
Basis CITIZEN6-PCR
Head GSC-007



CITIZEN7-GSC-007



 ER08

 1:1

RPM max. 6'000

Machines Types

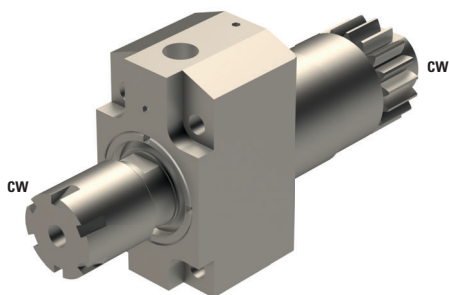
L20V
L20VII
L20VIII
L20X


Note :

Position T08-T10
Basis CITIZEN7-PCR
Head GSC-007



GSC1310-HP



	ER16
---	------

	1:1
---	-----

RPM max.	8'000
-----------------	-------

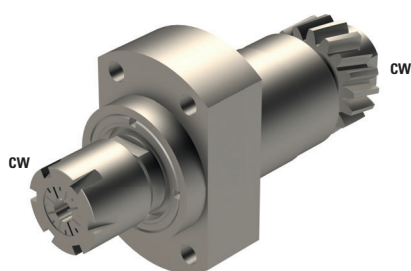
Machines Types	A20-3F7N	M220-III
	A232-VII	M220-V
	A32-VII	M232-III
	A320-VII	M232-V
	L20E-2M8	M320-III
	L20E-2M10	M320-V
	L20E-2M12	M332-III
	L32-1M8	M332-V
	L32-1M10	M32-4M5
	L32-1M12	M32-4M8


Note :

Position T06-T08 according to the machine
Maximum pressure 137 Bar



GSC-1210



	ER16
---	------

	1:1
---	-----

RPM max.	6'000
-----------------	-------

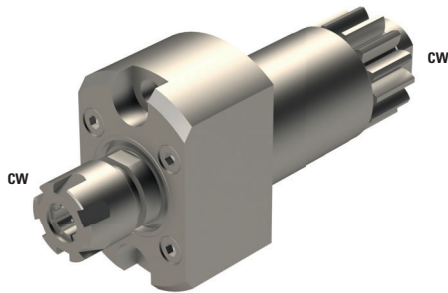
Machines Types	L20E2M8
	L20E2M10
	L20E-1M12
	L20E-IX


Note :

Position T08-T10



MSC-507-II



	ER11
---	------

	1:1
---	-----

RPM max.	8'000
-----------------	-------

Machines Types

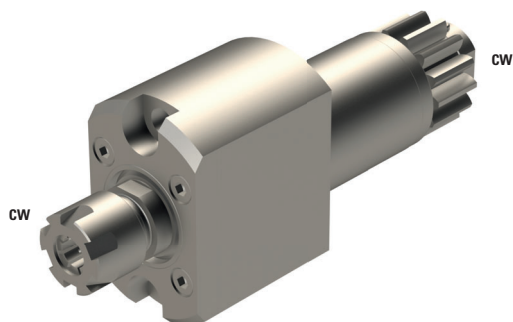
A20-VII	M320-V
A20-3F7N	M332-III
A320-VII	M332-V
L12-1M7	M32-4M5
L20E-2M12	M32-4M8
L20E-2M10	M212-C
L20E-2M8	M212-V
L20E-IX	M216-C
L20X	M216-V
L32-1M12	M312-III
L32-1M10	M312-V
L32-1M8	M312-VII
M220-III	M316-III
M220-V	M316-V
M232-III	M16-4M5
M232-V	M16-4M8
M320-III	


Note :

Position T06-T10 or T31-T34 or T21-T23 according to the machine



MSC-507-L



	ER11
---	------

	1:1
---	-----

RPM max.	10'000
-----------------	--------

Machines Types

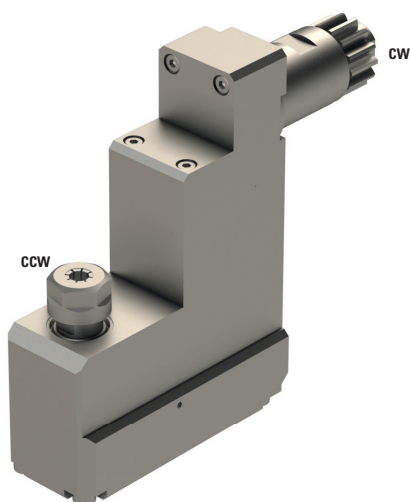
A20-3F7N	M212-V
A320-VII	M216-C
L12-1M7	M216-V
L20E-2M12	M312-III
L20E-2M10	M312-V
L20E-2M8	M312-VII
L20E-IX	M316-III
L20X	M316-V
M212-C	M16-4M5
	M16-4M8



Note :

Position T08-T10 or T31-T34



GSC-1507



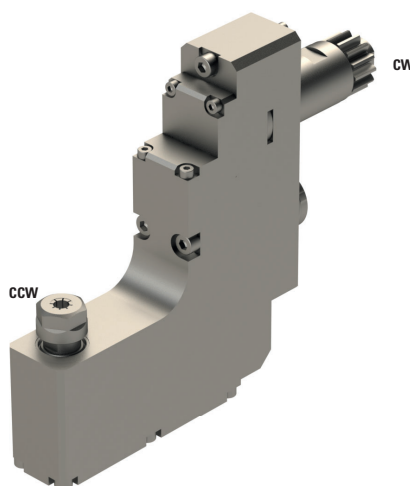
	ER11
	1:1
RPM max.	5'000
Machines Types	L20E2M8 L20E2M10 L20E-1M12 L20E-IX L20X L20XII



Note :

Position T31-34



GSC-1407

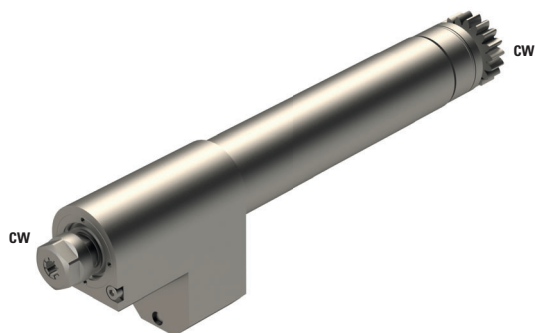



	ER11
	1:1
RPM max.	5'000
Machines Types	L20X

Note :

 Position T31-34
 Need 3 positions
 Bloc U127B


GSC-510-L-3X



	ER11
---	------

	1:3
---	-----

RPM max.	18'000
-----------------	--------

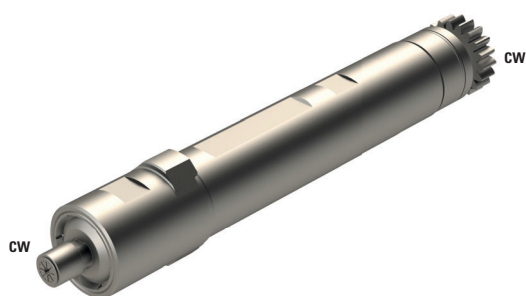
Machines Types	L20E2M8	M220-V
	L20E2M10	M232-III
	L20E-1M12	M232-V
	L20E-IX	M320-III
	L20V	M320-V
	L20VII	M332-III
	L20VIII	M332-V
	L20X	M32-4M5
M220-III	M32-4M8	


Note :

Position T08-T10



GSC-510-4X



	ER08
---	------

	1:3.8
---	-------

RPM max.	22'800
-----------------	--------

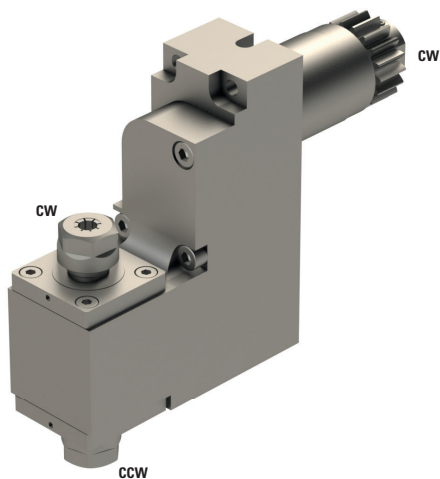
Machines Types	L20E2M8	
	L20E-2M10	
	L20E-1M12	
	L20E-IX	
	L20V	
	L20VII	
	L20VIII	
	L20X	
	M32-3M5	
	M32-3M3	
M32-4M5		
M32-4M8		


Note :

Position T08-T10



BSE307-3X



	2xER11
---	--------

	1:3
---	-----

RPM max.	18'000
----------	--------

Machines Types

L20E2M8
L20E2M10
L20E-1M12
L20E-IX
L20V
L20VII
L20VIII
L20X
M32-3M5
M32-3M3
M32-4M5
M32-4M8


Note :

Position T06-T09



GSC-310-3X



	ER11
---	------

	1:3
---	-----

RPM max.	-
----------	---

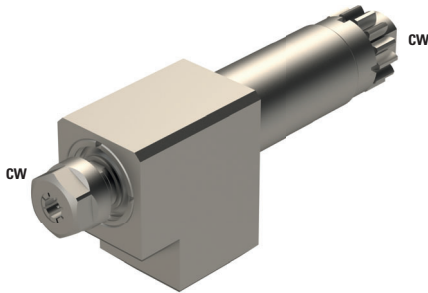
Machines Types	L25
----------------	-----


Note :

Position T08-T10



GSC-204-3X



 ER11

 1:3

RPM max. 15'000

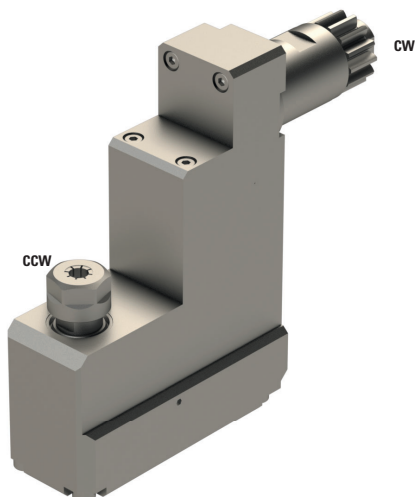
Machines Types	Machines Types	
	A20-3F7N	M220-III
A232-VII	M220-V	
A32-VII	M232-III	
A320-VII	M232-V	
L20E-2M8	M320-III	
L20E-2M10	M320-V	
L20E-2M12	M332-III	
L32-1M8	M332-V	
L32-1M10	M32-4M5	
L32-1M12	M32-4M8	


Note :

Position T06-T10 according to the machine



GSC-1507-3X



 ER11

 1:3

RPM max. 15'000

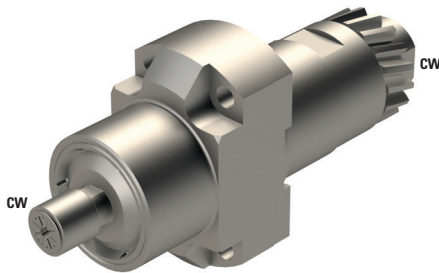
Machines Types	Machines Types	
	L20E2M8	L20E2M8
L20E2M10	L20E2M10	
L20E-1M12	L20E-1M12	
L20E-IX	L20E-IX	
L20X	L20X	
L20XII	L20XII	


Note :

Position T31-34



GSC-1210-4X



	ER08
---	------

	1:3.8
---	-------

RPM max.	-
----------	---

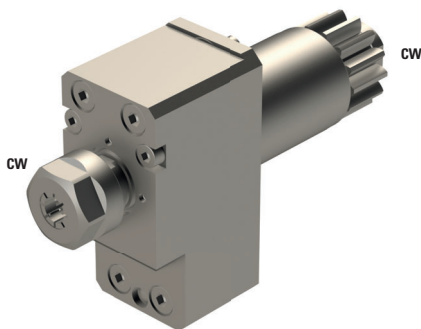
Machines Types	L20E2M8
	L20E2M10
	L20E-1M12
	L20E-IX


Note :

Position T08-T10



MSC-507-2X



	ER11
---	------

	1:2
---	-----

RPM max.	20'000
----------	--------

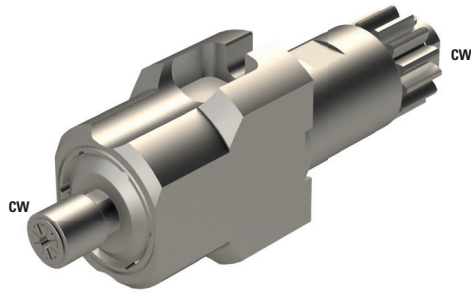
Machines Types	A20-VII	M320-V
	A20-3F7N	M332-III
	A320-VII	M332-V
	L12-1M7	M32-4M5
	L20E-2M12	M32-4M8
	L20E-2M10	M212-C
	L20E-2M8	M212-V
	L20E-IX	M216-C
	L20X	M216-V
	L32-1M12	M312-III
	L32-1M10	M312-V
	L32-1M8	M312-VII
	M220-III	M316-III
	M220-V	M316-V
	M232-III	M16-4M5
	M232-V	M16-4M8
	M320-III	


Note :


Position T06-T10 or T31-T34 or T21-T23 according to the machine



MSC-507-4X



 ER08

 1:3.8

RPM max. 38'000

Machines Types

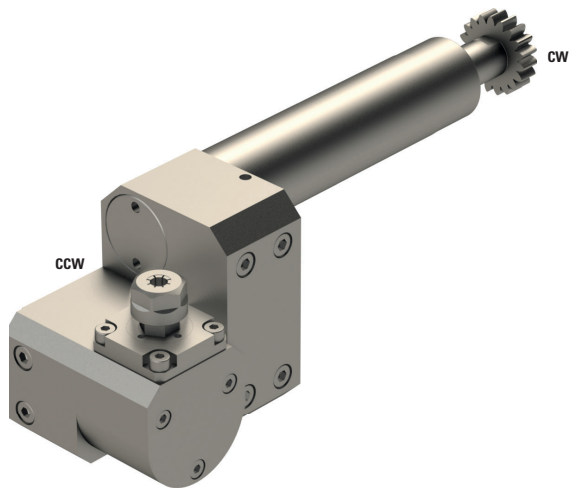
A20-VII	M320-V
A20-3F7N	M332-III
A320-VII	M332-V
L12-1M7	M32-4M5
L20E-2M12	M32-4M8
L20E-2M10	M212-C
L20E-2M8	M212-V
L20E-IX	M216-C
L20X	M216-V
L32-1M12	M312-III
L32-1M10	M312-V
L32-1M8	M312-VII
M220-III	M316-III
M220-V	M316-V
M232-III	M16-4M5
M232-V	M16-4M8
M320-III	


Note :

Position T10-T06 or T31-T34 or T21-T23 according to the machine



GSA-107



	ER11
---	------

	1:1
---	-----

RPM max.	6'000
----------	-------

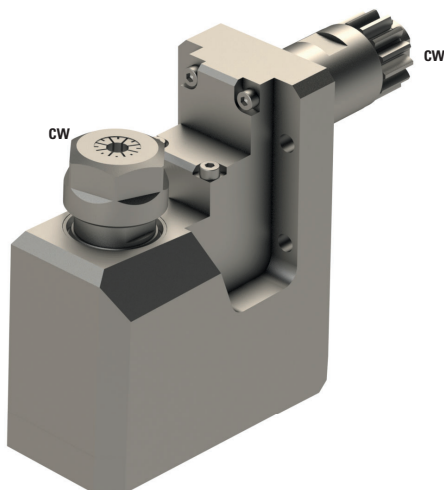
Machines Types	L20E2M8	M220-V
	L20E2M10	M232-III
	L20E-1M12	M232-V
	L20E-IX	M320-III
	L20V	M320-V
	L20VII	M332-III
	L20VIII	M332-V
	L20X	M32-4M5
M220-III	M32-4M8	


Note :

Position T08-T10
Need 2 tool positions
Adjustable 0°-180°



GSA-1530



	ER16
---	------

	1:1
---	-----

RPM max.	-
----------	---

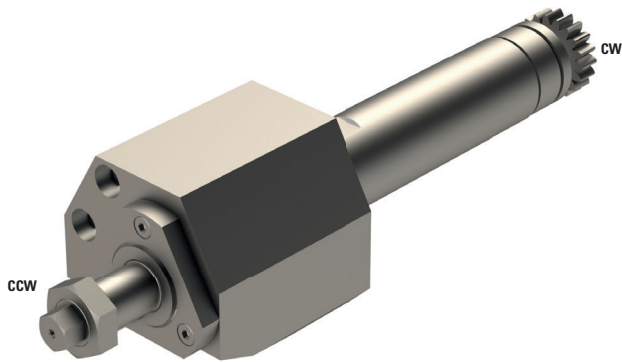
Machines Types	L20E2M8
	L20E2M10
	L20E-1M12
	L20E-IX

Note :

Position T06-T09
Fixe angle on 93°



GSS-510



Ø 16

⚙️ 2:1

RPM max. 3'000

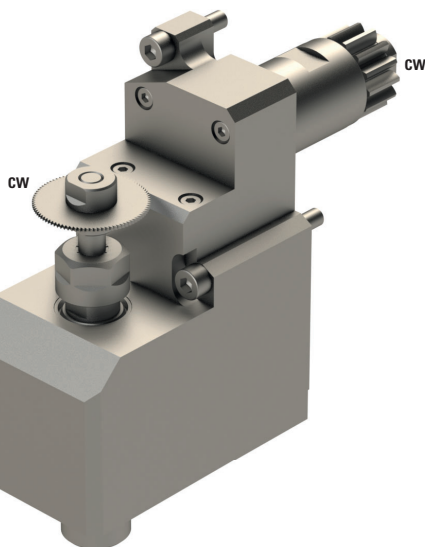
Machines Types		
	L20E2M8	M220-V
	L20E2M10	M232-III
	L20E-1M12	M232-V
	L20E-IX	M320-III
	L20V	M320-V
	L20VII	M332-III
	L20VIII	M332-V
	L20X	M32-4M5
	M220-III	M32-4M8

Note :

Position T08-T10
Need 2 tool positions



GSS-1530



≡ ER11

⚙️ 5:3

RPM max. 5'400

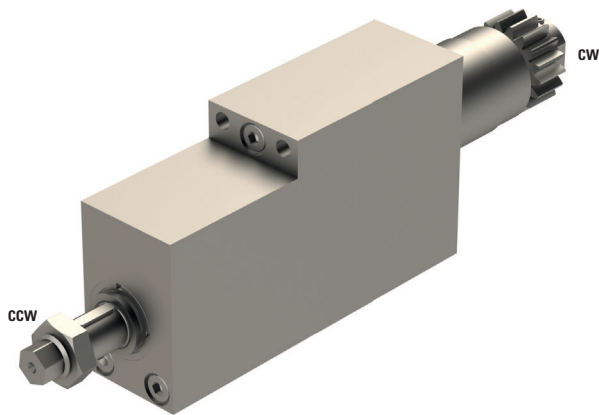
Machines Types	
	A20-3F7N
	L12-1M7
	L20E-2M8
	L20E-2M10
	L20E-2M12
	L20E-IX
	L20X

Note :

Position T34
Max. tool Ø63 mm
Max. cutter thickness 2 mm



GSC-1335-DEC



Ø 13

⚙️➡️⚙️ 1:1

RPM max. 6'000

Machines Types

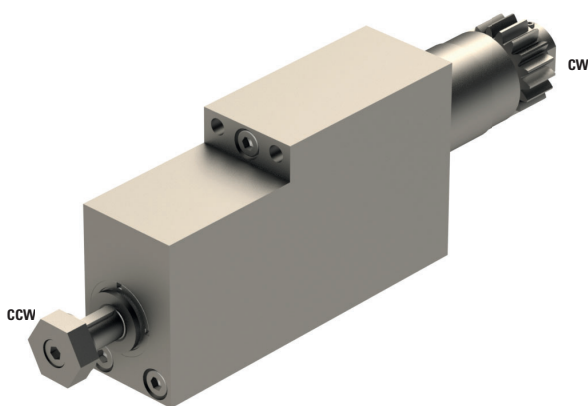
L20E-2M8
L20E-2M10
L20E-2M12
L32-1M8
L32-1M10
L32-1M12

Note :

Position T08-T10
Max. tool Ø58 mm
Max. cutter thickness 15 mm



GSS-1035-DEC



Ø 10

⚙️➡️⚙️ 1:1

RPM max. 6'000

Machines Types

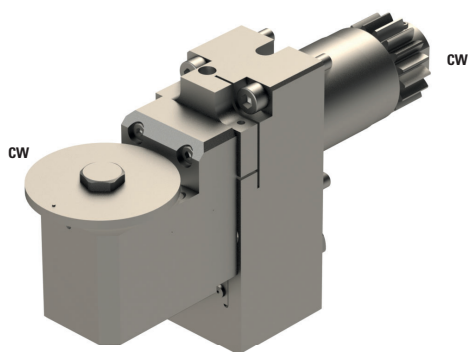
A232-VII
A32-VII
A320-VII
L20E2M8
L20E2M10
L20E-1M12
L20E-IX
L20V
L20VII
L20VIII
L20X
L32-1M8
L32-1M10
L32-1M12

Note :

Position T08-T10
Max. tool Ø50mm
Max. thickness 15.5mm



CITIZEN6-GSP-218



Ø	8
---	---

⚙️	1:1
----	-----

RPM max.	6'000
----------	-------

Machines Types

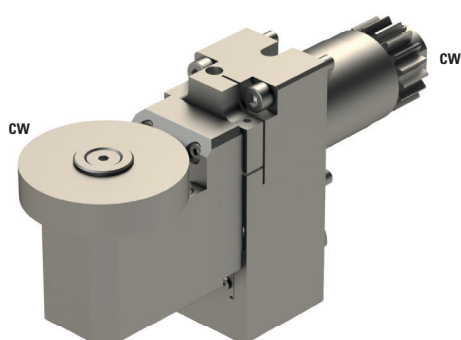
A232-VII
 A32-VII
 A320-VII
 L20E-2M8
 L20E-2M10
 L20E-2M12
 L20E-IX
 L32-1M8
 L32-1M10
 L32-1M12

Note :

Position T08-T10
 Adjustable $\pm 15^\circ$
 Max. tool $\varnothing 45$ mm
 Max. thickness 5 mm
 Basis CITIZEN6-PCR
 Head GSP-218



CITIZEN6-GSP-518



Ø	15.875
---	--------

⚙️	1:1
----	-----

RPM max.	6'000
----------	-------

Machines Types

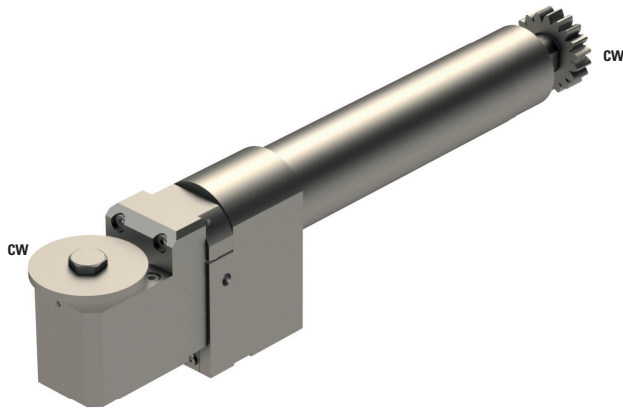
A232-VII
 A32-VII
 A320-VII
 L20E-2M8
 L20E-2M10
 L20E-2M12
 L20E-IX
 L32-1M8
 L32-1M10
 L32-1M12

Note :

Position T08-T10
 Adjustable $\pm 15^\circ$
 Max. tool $\varnothing 45$ mm
 Max. thickness 10 mm
 Basis CITIZEN6-PCR
 Head GSP-518



CITIZEN7-GSP-218



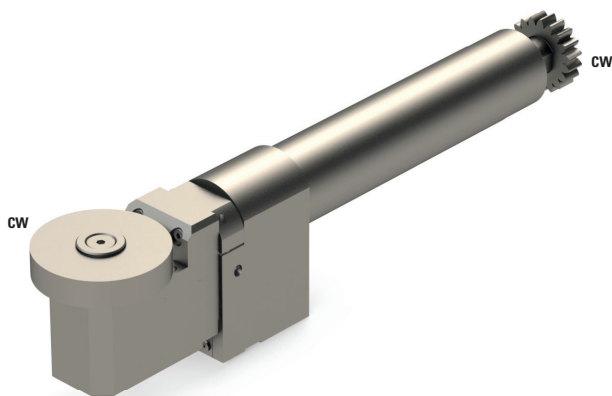
Ø	8
⚙️➡️⚙️	1:1
RPM max.	6'000
Machines Types	L20V L20VII L20VIII L20X

Note :

Position T08-T10
Adjustable $\pm 15^\circ$
Max. tool $\varnothing 45$ mm
Max. thickness 5 mm
Basis CITIZEN7-PCR
Head GSP-218



CITIZEN7-GSP-518



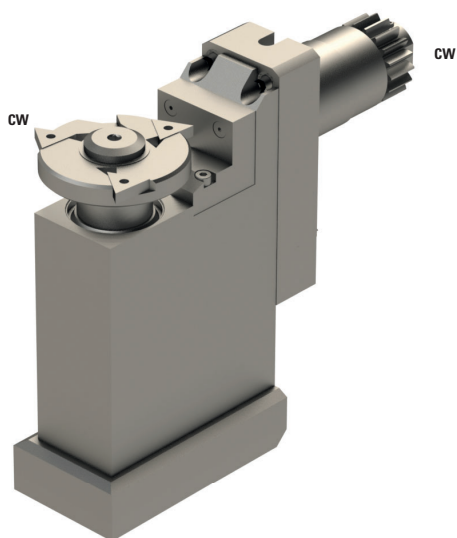
Ø	15.875
⚙️➡️⚙️	1:1
RPM max.	6'000
Machines Types	L20V L20VII L20VIII L20X


Note :

Position T08-T10
Adjustable $\pm 15^\circ$
Max. tool $\varnothing 45$ mm
Max. thickness 10 mm
Basis CITIZEN7-PCR
Head GSP-518



BSP-513



 Ø13

 1.5:1

RPM max. 8'000

Machines Types

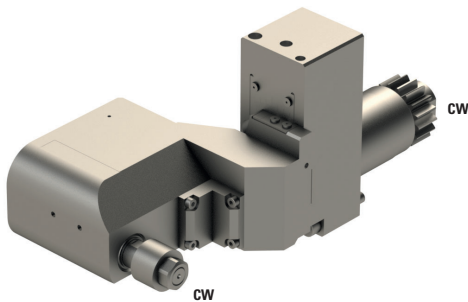
A20-VII
A20-3F7N
A32
L220
L32

Note :

Position T09
Max. tool Ø70 mm
Max. thickness 8.3 mm



CITIZEN6-LSH-180



Ø	8
⚙️+⚙️	1:1
RPM max.	6'000

Machines Types

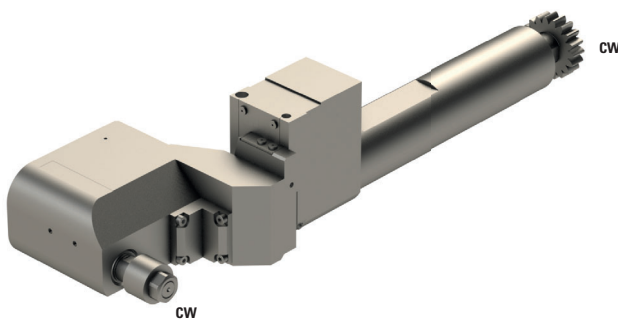
A232-VII
A32-VII
A320-VII
L20E-2M8
L20E-2M10
L20E-2M12
L20E-IX
L32-1M8
L32-1M10
L32-1M12

Note :

Position T08-T10
Adjustable -2° to +15° with max. tool Ø18 mm and max. thickness 12 mm
Adjustable -2° to +4° with max. tool Ø24 mm and max. thickness 12 mm
Basis CITIZEN6-PCR
Head LSH-180



CITIZEN7-LSH-180



Ø	8
⚙️+⚙️	1:1
RPM max.	6'000

Machines Types

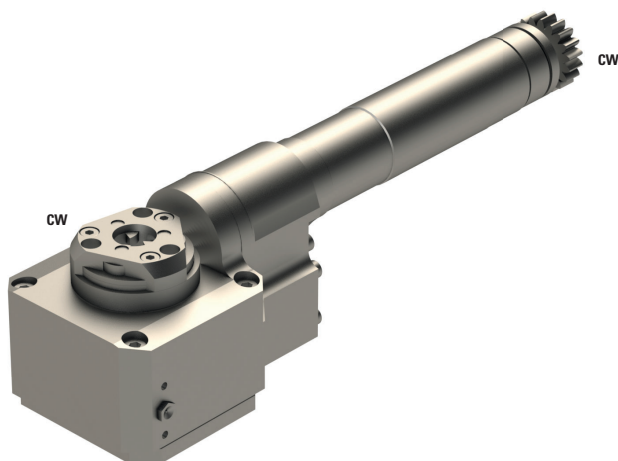
L20V
L20VII
L20VIII
L20X



Note :

Position T08-T10
Adjustable -2° to +15° with max. tool Ø18 mm and max. thickness 12 mm
Adjustable -2° to +4° with max. tool Ø24 mm and max. thickness 12 mm
Basis CITIZEN7-PCR
Head LSH-180



LSW-101-L20



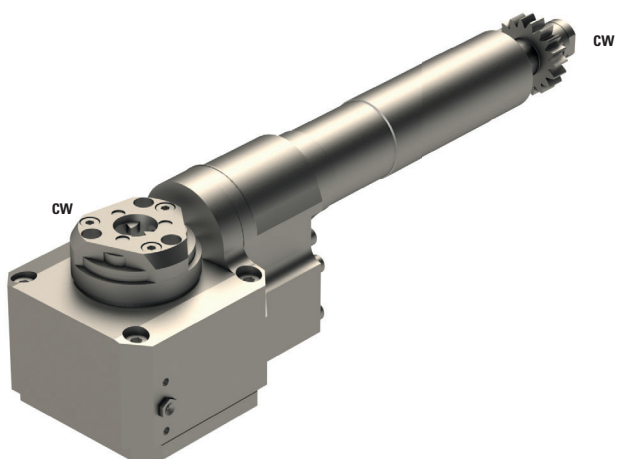
	-
	2:1
RPM max.	3'000
Machines Types	L20E2M8 L20VIII
	L20E2M10 L20X
	L20E-1M12 M32-3M5
	L20E-IX M32-3M3
	L20V M32-4M5
	L20VII M32-4M8



Note :

Position T08-T10
 Need 2 tool positions
 Adjustable $\pm 10^\circ$
 SCHWANOG cutter head 857-207-01, Z=6, $\varnothing 12$ mm
 SCHWANOG cutter head SWG-192236, Z=6, $\varnothing 12$ mm
 GLOOR cutter head LSW-101-FPGLO, Z=3, $\varnothing 6$ mm
 GLOOR cutter head LSW-101-FPGLO-12, Z=3, $\varnothing 12$ mm
 GLOOR cutter head 01-0001, Z=6, $\varnothing 11$ mm
 UTILIS cutter head 137600, Z=9, $\varnothing 12$ mm
 UTILIS cutter head 137356, Z=12, $\varnothing 12$ mm
 HORN cutter head M302.C012.10.06, Z=6, $\varnothing 12$ mm



LSW-101-L25



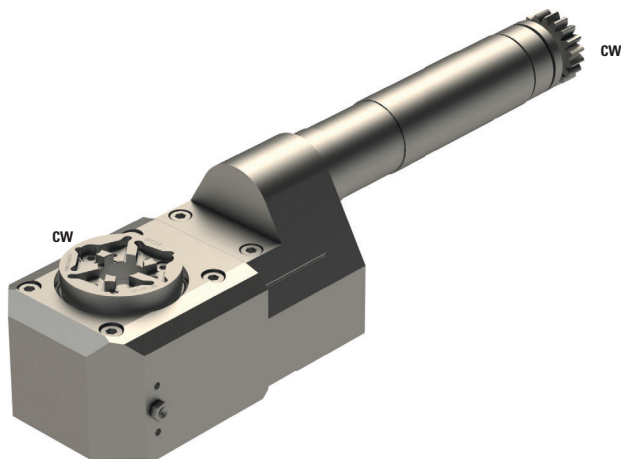
	-
	2:1
RPM max.	3'000
Machines Types	L20E2M8 L20VIII
	L20E2M10 L20X
	L20E-1M12 M32-3M5
	L20E-IX M32-3M3
	L20V M32-4M5
	L20VII M32-4M8



Note :

Position T08-T10
 Need 2 tool positions
 Adjustable $\pm 10^\circ$
 SCHWANOG cutter head 857-207-01, Z=6, $\varnothing 12$ mm
 SCHWANOG cutter head SWG-192236, Z=6, $\varnothing 12$ mm
 GLOOR cutter head LSW-101-FPGLO, Z=3, $\varnothing 6$ mm
 GLOOR cutter head LSW-101-FPGLO-12, Z=3, $\varnothing 12$ mm
 GLOOR cutter head 01-0001, Z=6, $\varnothing 11$ mm
 UTILIS cutter head 137600, Z=9, $\varnothing 12$ mm
 UTILIS cutter head 137356, Z=12, $\varnothing 12$ mm
 HORN cutter head M302.C012.10.06, Z=6, $\varnothing 12$ mm



LSW-215



	-
	1:1
RPM max.	6'000

Machines Types

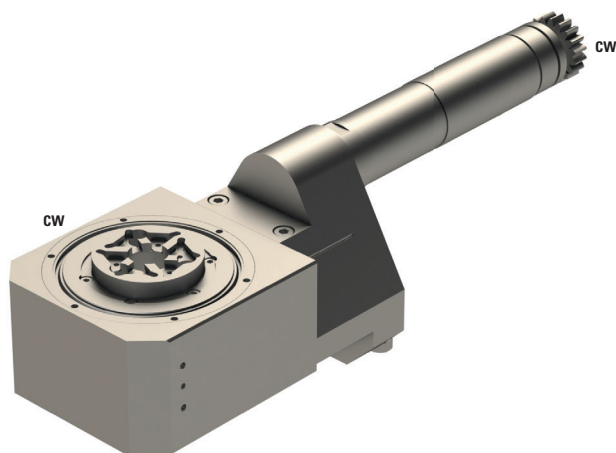
L20E2M8	L20VIII
L20E2M10	L20X
L20E-1M12	M32-3M5
L20E-IX	M32-3M3
L20V	M32-4M5
L20VII	M32-4M8



Note :

Position T08-T10
 Need 2 tool positions
 Adjustable $\pm 15^\circ$
 SCHWANOG cutter head 857-207-01, Z=6, $\varnothing 12$ mm
 SCHWANOG cutter head SWG-192236, Z=6, $\varnothing 12$ mm
 GLOOR cutter head LSW-101-FPGLO, Z=3, $\varnothing 6$ mm
 GLOOR cutter head LSW-101-FPGLO-12, Z=3, $\varnothing 12$ mm
 GLOOR cutter head 01-0001, Z=6, $\varnothing 11$ mm
 UTILIS cutter head 137600, Z=9, $\varnothing 12$ mm
 UTILIS cutter head 137356, Z=12, $\varnothing 12$ mm
 HORN cutter head M302.C012.10.06, Z=6, $\varnothing 12$ mm



LSW-225



	-
	1:1
RPM max.	6'000

Machines Types

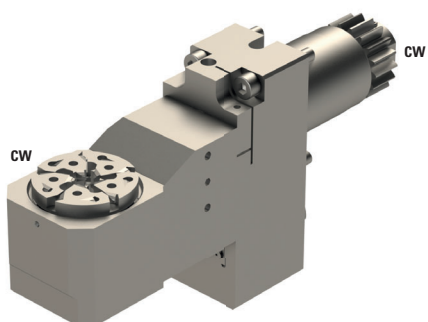
L20E2M8
L20E2M10
L20E-1M12
L20E-IX
L20V
L20VII
L20VIII
L20X
M32-3M5
M32-3M3
M32-4M5
M32-4M8

Note :

Position T08-T10
 Need 2 tool positions
 Adjustable $\pm 25^\circ$



CITIZEN6-GSW-210



Ø	-
---	---

⚙️	1:1
----	-----

RPM max.	6'000
----------	-------

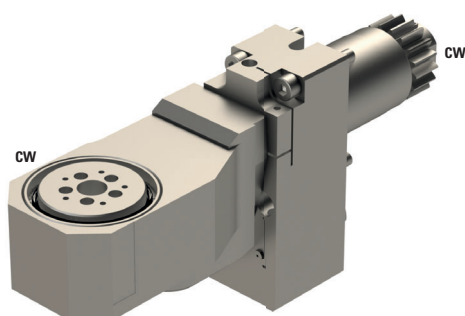
Machines Types	A232-VII	L20E-2M12
	A32-VII	L20E-IX
	A320-VII	L32-1M8
	L20E-2M8	L32-1M10
	L20E-2M10	L32-1M12

Note :

Position T08-T10
 Adjustable $\pm 10^\circ$
 PCM cutterhead Z=5, $\varnothing 6$ mm
 Base CITIZEN6-PCR
 Head GSW-210
 SCHWANOG cutter head GSW-210-FPSWG, Z=5, $\varnothing 6$ mm
 UTILIS cutter head GSW-210-FPUTI, Z=6, $\varnothing 6$ mm



CITIZEN6-GSW-220



Ø	-
---	---

⚙️	1:1
----	-----

RPM max.	6'000
----------	-------

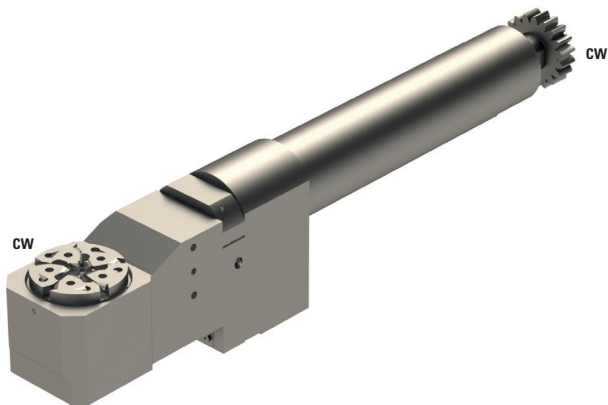
Machines Types	A232-VII	L20E-2M12
	A32-VII	L20E-IX
	A320-VII	L32-1M8
	L20E-2M8	L32-1M10
	L20E-2M10	L32-1M12

Note :

Position T08-T10
 Adjustable $\pm 20^\circ$
 PCM cutterhead Z=5, $\varnothing 6$ mm
 Base CITIZEN6-PCR
 Head GSW-220
 SCHWANOG cutter head GSW-220-FPSWG, Z=5, $\varnothing 4$ mm
 SCHWANOG cutter head GSW-220-FPSWG-II, Z=5, $\varnothing 6$ mm
 GLOOR cutter head GSW-210-FPGLO, Z=5, $\varnothing 6$ mm



CITIZEN7-GSW-210



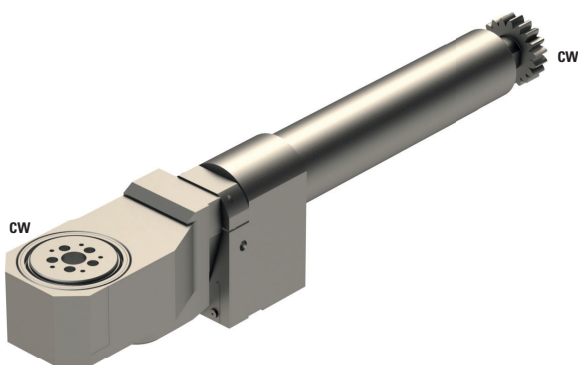
Ø	-
⚙️	1:1
RPM max.	6'000
Machines Types	L20V L20VII L20VIII L20X

Note :

Position T08-T10
Adjustable $\pm 10^\circ$
PCM cutterhead, Z=5, $\varnothing 6$ mm
Base CITIZEN7-PCR
Head GSW-210
SCHWANOG cutter head GSW-210-FPSWG, Z=5, $\varnothing 6$ mm
UTILIS cutter head GSW-210-FPUTI, Z=6, $\varnothing 6$ mm



CITIZEN7-GSW-220



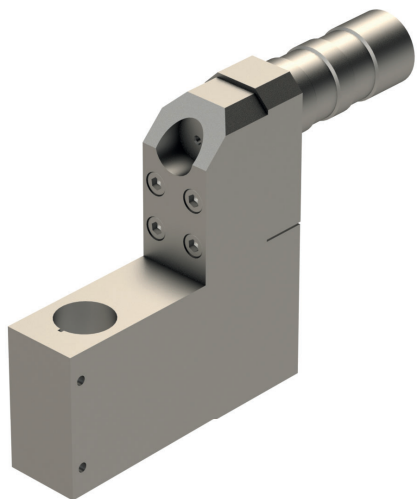
Ø	-
⚙️	1:1
RPM max.	6'000
Machines Types	L20V L20VII L20VIII L20X

Note :

Position T08-T10
Adjustable $\pm 20^\circ$
PCM cutterhead, Z=5, $\varnothing 6$ mm
Base CITIZEN7-PCR
Head GSW-220
SCHWANOG cutter head GSW-220-FPSWG, Z=5, $\varnothing 4$ mm
SCHWANOG cutter head GSW-220-FPSWG-II, Z=5, $\varnothing 6$ mm
GLOOR cutter head GSW-210-FPGLO, Z=5, $\varnothing 6$ mm



852-354-OF010



Ø	25
---	----

⚙️	-
----	---

RPM max.	-
----------	---

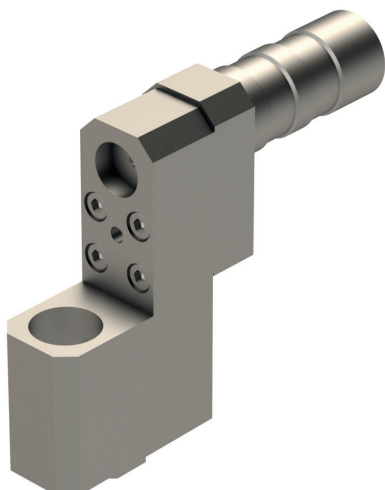
Machines Types	L20E2M8
	L20E2M10
	L20E-1M12
	L20E-IX
	L20V
	L20VII
	L20VIII
	L20X
	M32-3M5
	M32-3M3

Note :

Position T08-T10
 For high frequenz spindel Meyrat



GDF903



Ø	25,4
---	------

⚙️	-
----	---

RPM max.	-
----------	---

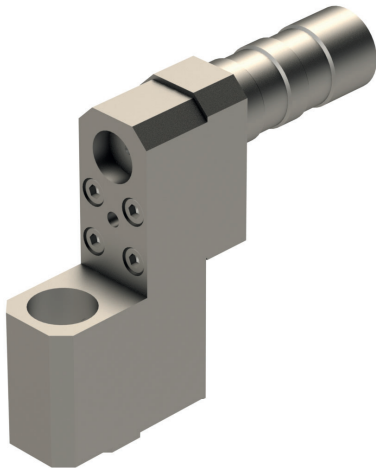
Machines Types	L20E2M8	M220-III
	L20E2M10	M220-V
	L20E-1M12	M232-III
	L20E-IX	M232-V
	L20V	M320-III
	L20VII	M320-V
	L20VIII	M332-III
	L20X	M332-V

Note :

Position T08-T10 and T06-T09 according to the machine



GDF-903-25



Ø 25,00

⚙️ -

RPM max. -

Machines Types

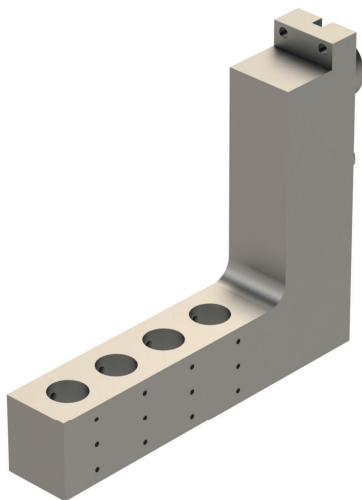
L20E2M8	M220-III
L20E2M10	M220-V
L20E-1M12	M232-III
L20E-IX	M232-V
L20V	M320-III
L20VII	M320-V
L20VIII	M332-III
L20X	M332-V

Note :

Position T06-T09



GDF-1207-L



Ø 4x19.05

⚙️ -

RPM max. -

Machines Types

A20-3F7N
L20E-2M10
L20E-2M12
L20E-2M8
L32-1M10
L32-1M12
L32-1M8

Note :

Position T09

