



## MSC-507-II



	ER11
	1:1
<b>RPM max.</b>	10'000

### Machines Types

A20-3F7N	M212-V
A320-VII	M216-C
L12-1M7	M216-V
L20E-2M12	M312-III
L20E-2M10	M312-V
L20E-2M8	M312-VII
L20E-IX	M316-III
L20X	M316-V
M212-C	M16-4M5
	M16-4M8



### Note :

Position T08-T10 or T31-T34



## MSC-507-L



	ER11
	1:1
<b>RPM max.</b>	10'000

### Machines Types

A20-3F7N	M212-V
A320-VII	M216-C
L12-1M7	M216-V
L20E-2M12	M312-III
L20E-2M10	M312-V
L20E-2M8	M312-VII
L20E-IX	M316-III
L20X	M316-V
M212-C	M16-4M5
	M16-4M8


### Note :

Position T08-T10 or T31-T34



## MSC-512



	ER16
---	------

	1:1
---	-----

RPM max.	10'000
----------	--------

<b>Machines Types</b>	A20-3F7N	M212-V
	A320-VII	M216-C
	L12-1M7	M216-V
	L20E-2M12	M312-III
	L20E-2M10	M312-V
	L20E-2M8	M312-VII
	L20E-IX	M316-III
	L20X	M316-V
	M212-C	M16-4M5
		M16-4M8


### Note :


Position T34  
Position T08-T10 with tool holder MSC-507-II on his side.



## MSC-513



	ER20
---	------

	1:1
---	-----

RPM max.	10'000
----------	--------

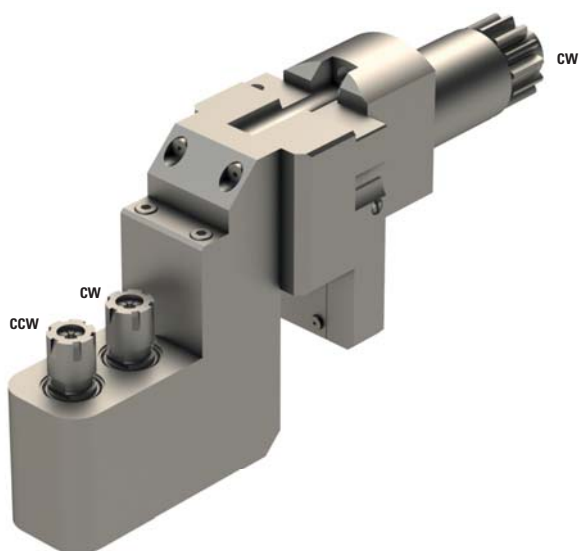
<b>Machines Types</b>	A20-3F7N	M212-V
	A320-VII	M216-C
	L12-1M7	M216-V
	L20E-2M12	M312-III
	L20E-2M10	M312-V
	L20E-2M8	M312-VII
	L20E-IX	M316-III
	L20X	M316-V
	M212-C	M16-4M5
		M16-4M8


### Note :

Position T34  
Position T08-T10 with tool holder MSC-507-II on his side.



## CITIZEN5-GSE-208



	2xER08
---	--------

	1:1
---	-----

<b>RPM max.</b>	10'000
-----------------	--------

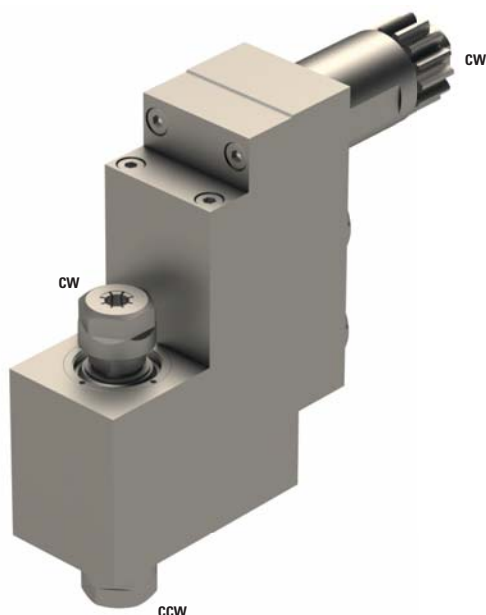
<b>Machines Types</b>	L12-1M7 M16-4M5 M16-4M8
-----------------------	-------------------------------


**Note :**

Position T08-T10  
 Adjustable  $\pm 15^\circ$   
 Basis CITIZEN5-PCR  
 Head GSE-208



## MSE-1007



	1xER11+1xER11
---	---------------

	1:1
---	-----

<b>RPM max.</b>	9'000
-----------------	-------

<b>Machines Types</b>	A20-VII A20-3F7N L12-1M7
-----------------------	--------------------------------


**Note :**

Position T31-T34  
 Need 3 positions



## MSC-507-II



	ER11
---	------

	1:1
---	-----

RPM max.	10'000
----------	--------

### Machines Types

A20-3F7N	M212-V
A320-VII	M216-C
L12-1M7	M216-V
L20E-2M12	M312-III
L20E-2M10	M312-V
L20E-2M8	M312-VII
L20E-IX	M316-III
L20X	M316-V
M212-C	M16-4M5
	M16-4M8


### Note :

Position T08-T10 or T31-T34



## MSC-507-L



	ER11
---	------

	1:1
---	-----

RPM max.	10'000
----------	--------

### Machines Types

A20-3F7N	M212-V
A320-VII	M216-C
L12-1M7	M216-V
L20E-2M12	M312-III
L20E-2M10	M312-V
L20E-2M8	M312-VII
L20E-IX	M316-III
L20X	M316-V
M212-C	M16-4M5
	M16-4M8


### Note :

Position T08-T10 or T31-T34



## MSC-512



	ER16
---	------

	1:1
---	-----

<b>RPM max.</b>	10'000
-----------------	--------

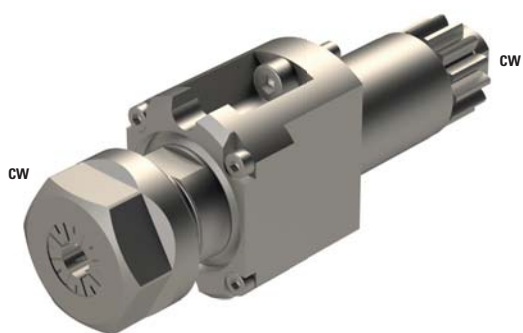
<b>Machines Types</b>	A20-3F7N	M212-V
	A320-VII	M216-C
	L12-1M7	M216-V
	L20E-2M12	M312-III
	L20E-2M10	M312-V
	L20E-2M8	M312-VII
	L20E-IX	M316-III
	L20X	M316-V
	M212-C	M16-4M5
		M16-4M8


### Note :

Position T34  
 Position T08-T10 with tool holder MSC-507-II on his side.



## MSC-513



	ER20
---	------

	1:1
---	-----

<b>RPM max.</b>	10'000
-----------------	--------

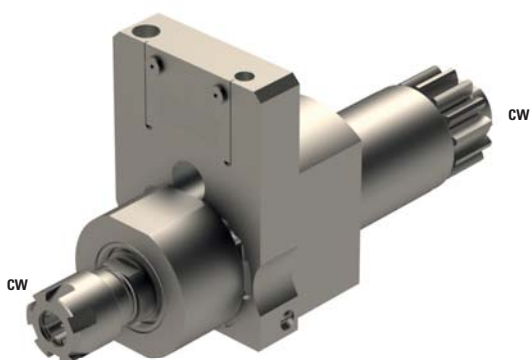
<b>Machines Types</b>	A20-3F7N	M212-V
	A320-VII	M216-C
	L12-1M7	M216-V
	L20E-2M12	M312-III
	L20E-2M10	M312-V
	L20E-2M8	M312-VII
	L20E-IX	M316-III
	L20X	M316-V
	M212-C	M16-4M5
		M16-4M8


### Note :

Position T34  
 Position T08-T10 with tool holder MSC-507-II on his side.



## CITIZEN5-GSC-007



	ER08
---	------

	1:1
---	-----

RPM max.	10'000
----------	--------

Machines Types	L12-1M7
----------------	---------


Note :	
--------	--


Position T08-T10  
Basis CITIZEN5-PCR  
Head GSC-007



## RSC507



	ER11
---	------

	1:1
---	-----

RPM max.	9'000
----------	-------

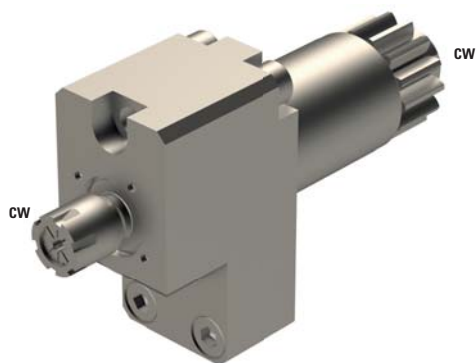
Machines Types	L12-1M7
----------------	---------


Note :	
--------	--

Position T31 on U151B  
Out put torque max 1Nm



## GSE-3307-L-3X



	ER08
---	------

	1:3
---	-----

RPM max.	30'000
----------	--------

### Machines Types

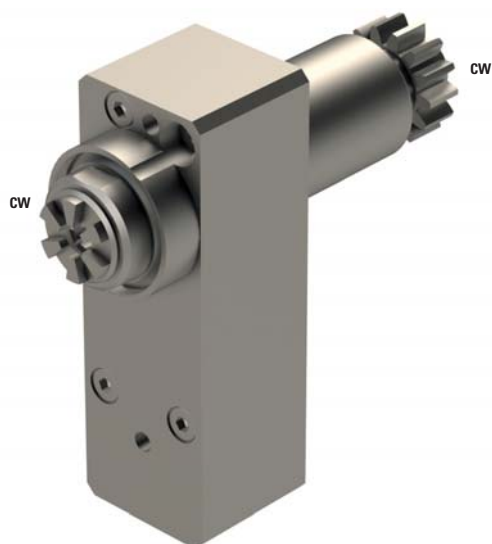
A20-3F7N  
 A20-VII  
 A320-VII  
 L12-1M7  
 L20E-2M8  
 L20E-2M10  
 L20E-2M12  
 L20E-IX  
 L20X  
 L32-1M8  
 L32-1M10  
 L32-1M12


### Note :

Position T10-T12 and T31-T34



## GSE-3507-3X



	ER11
---	------

	1:3
---	-----

RPM max.	27'000
----------	--------

### Machines Types

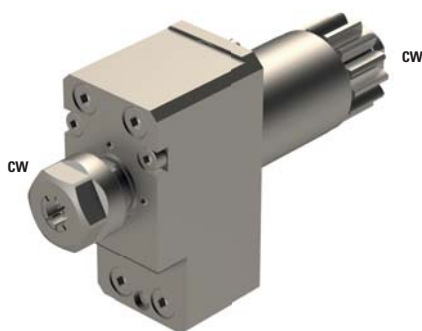
A20-3F7N  
 A20-VII  
 A320-VII  
 L12-1M7  
 L20E-2M8  
 L20E-2M10  
 L20E-2M12  
 L20E-IX  
 L20X  
 L32-1M8  
 L32-1M10  
 L32-1M12



### Note :

Position T31-T34



## MSC-507-2X



	ER11
	1:2
<b>RPM max.</b>	20'000

### Machines Types

A20-VII	M320-V
A20-3F7N	M332-III
A320-VII	M332-V
L12-1M7	M32-4M5
L20E-2M12	M32-4M8
L20E-2M10	M212-C
L20E-2M8	M212-V
L20E-IX	M216-C
L20X	M216-V
L32-1M12	M312-III
L32-1M10	M312-V
L32-1M8	M312-VII
M220-III	M316-III
M220-V	M316-V
M232-III	M16-4M5
M232-V	M16-4M8
M320-III	

### Note :

Position T06-T10 or T31-T34 or T21-T23 according to the machine



## MSC-507-4X



	ER08
	1:3.8
<b>RPM max.</b>	38'000

### Machines Types

A20-VII	M320-V
A20-3F7N	M332-III
A320-VII	M332-V
L12-1M7	M32-4M5
L20E-2M12	M32-4M8
L20E-2M10	M212-C
L20E-2M8	M212-V
L20E-IX	M216-C
L20X	M216-V
L32-1M12	M312-III
L32-1M10	M312-V
L32-1M8	M312-VII
M220-III	M316-III
M220-V	M316-V
M232-III	M16-4M5
M232-V	M16-4M8
M320-III	

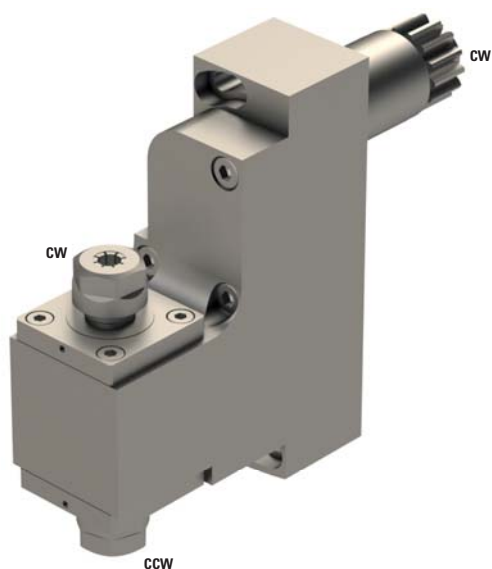
### Note :

Position T10-T06 or T31-T34 or T21-T23 according to the machine





## GSE-1207-3X

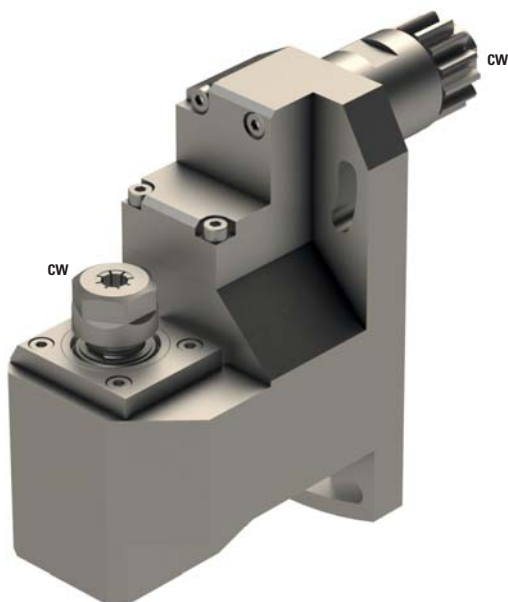



	2xER11
	1:3
<b>RPM max.</b>	30'000
<b>Machines Types</b>	L12-1M7
<b>Note :</b>	

Position T10  
Adjustable +30°  
Need 2 position if inclined



## GSE3607-1M

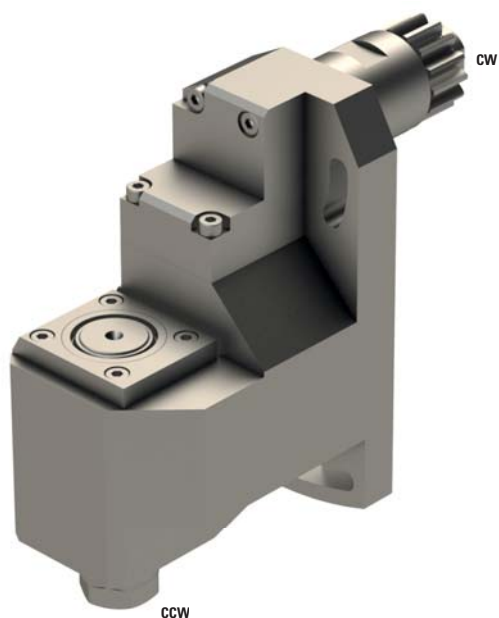




	1xER11
	1:1
<b>RPM max.</b>	10'000
<b>Machines Types</b>	L12-1M7
<b>Note :</b>	

Position T08-10  
Adjustable  $\pm 45^\circ$



## GSE3607-1B

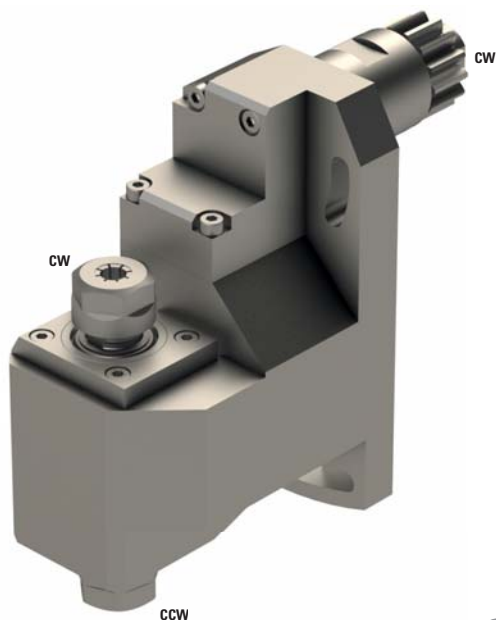


	1xER11
	1:1
<b>RPM max.</b>	10'000
<b>Machines Types</b>	L12-1M7
<b>Note :</b>	

Position T08-10  
Adjustable  $\pm 45^\circ$



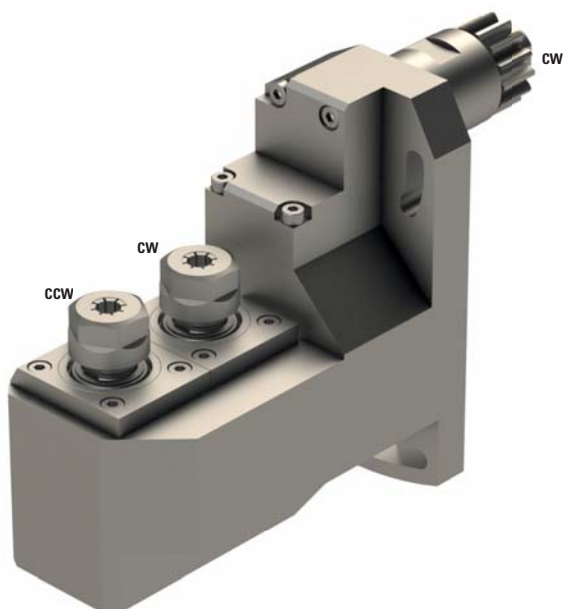
## GSE3607-1D




	1xER11+1xER11
	1:1
<b>RPM max.</b>	10'000
<b>Machines Types</b>	L12-1M7
<b>Note :</b>	

Position T08-10  
 Adjustable  $\pm 45^\circ$

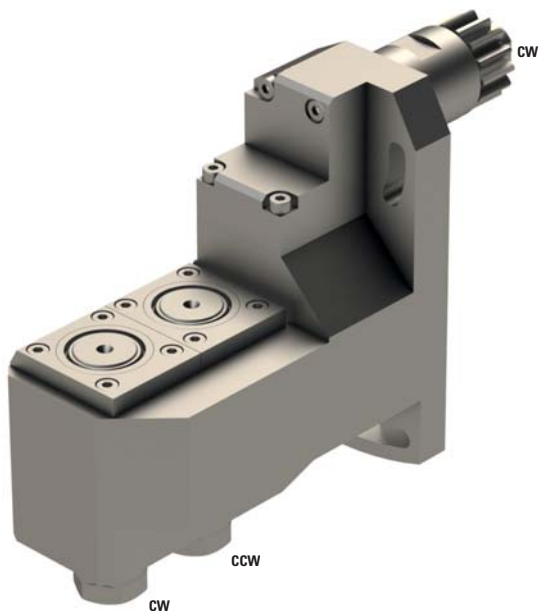
## GSE3607-2M




	2xER11
	1:1
<b>RPM max.</b>	10'000
<b>Machines Types</b>	L12-1M7
<b>Note :</b>	

Position T08-10  
 Adjustable  $\pm 30^\circ$

## GSE3607-2B

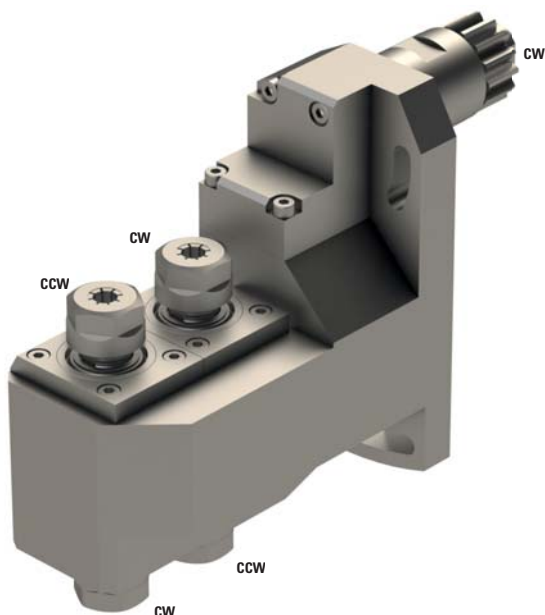




	2xER11
	1:1
<b>RPM max.</b>	10'000
<b>Machines Types</b>	L12-1M7
<b>Note :</b>	

Position T08-10  
Adjustable  $\pm 30^\circ$



## GSE3607-2D

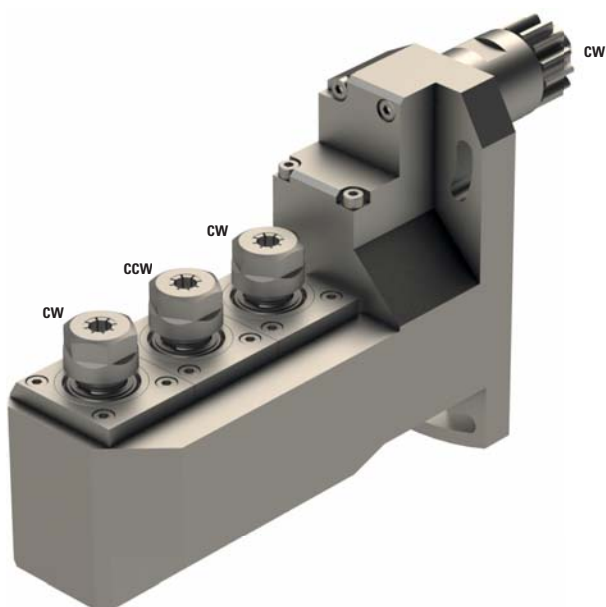


	2xER11+2xER11
	1:1
<b>RPM max.</b>	10'000
<b>Machines Types</b>	L12-1M7
<b>Note :</b>	

Position T08-10  
Adjustable  $\pm 30^\circ$



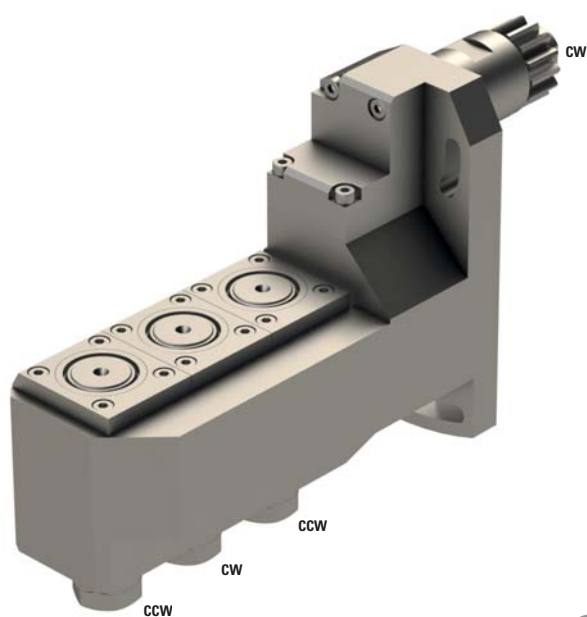
## GSE3607-3M





	3xER11
	1:1
<b>RPM max.</b>	10'000
<b>Machines Types</b>	L12-1M7
<b>Note :</b>	

Position T08-10  
 Adjustable  $\pm 30^\circ$

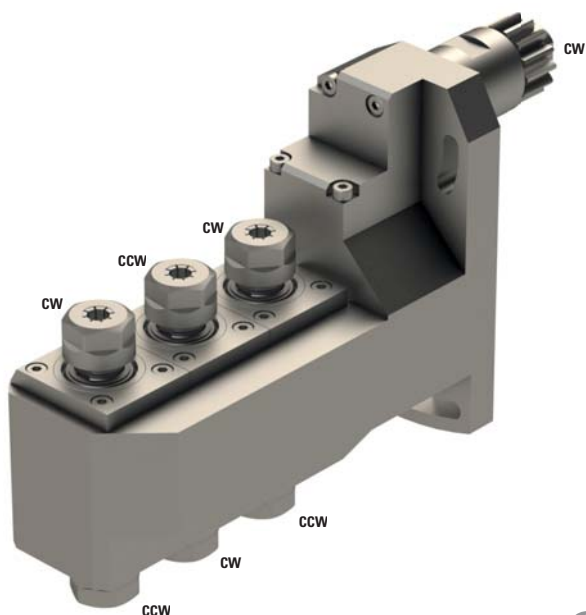
## GSE3607-3B




	3xER11
	1:1
<b>RPM max.</b>	10'000
<b>Machines Types</b>	L12-1M7
<b>Note :</b>	

Position T08-10  
 Adjustable  $\pm 30^\circ$

## GSE3607-3D



 3xER11+3xER11

 1:1

**RPM max.** 10'000

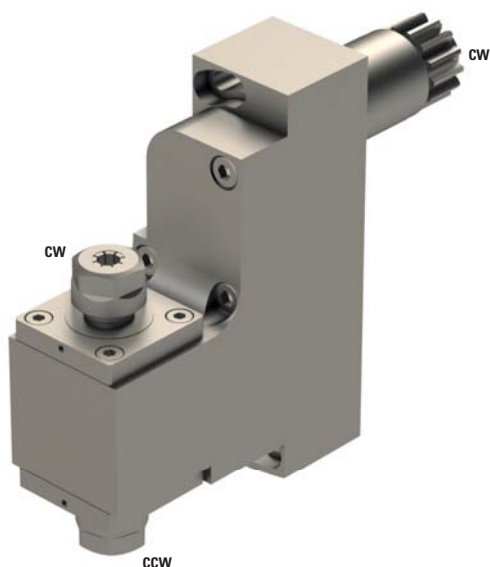
**Machines Types** L12-1M7


**Note :**

Position T08-10  
Adjustable  $\pm 30^\circ$



## GSE-1207-3X



 2xER11

 1:3

**RPM max.** 30'000

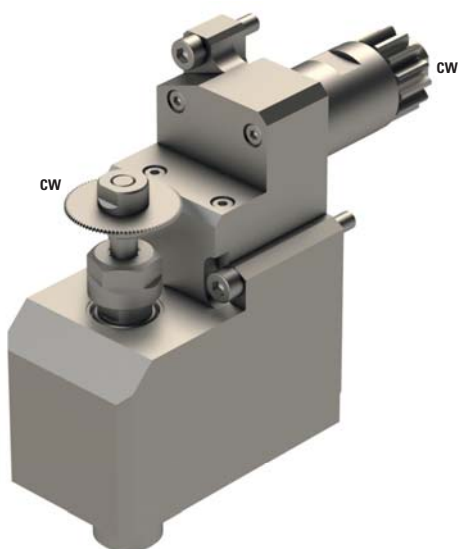
**Machines Types** L12-1M7



**Note :**

Position T10  
Adjustable  $+30^\circ$   
Need 2 position if inclined



## GSS-1530



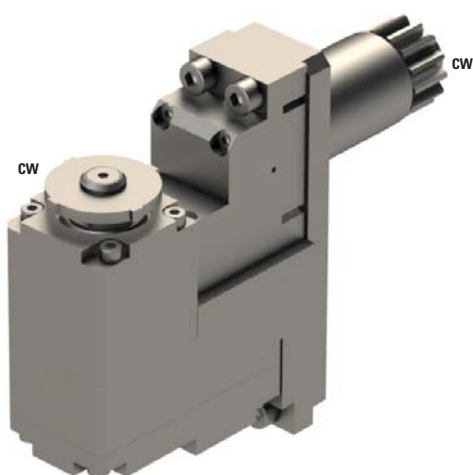
	ER11
	5:3
RPM max.	5'400
<b>Machines Types</b>	A20-3F7N L12-1M7 L20E-2M8 L20E-2M10 L20E-2M12 L20E-IX L20X

### Note :

Position T34  
 Max. tool Ø63 mm  
 Max. cutter thickness 2 mm



## GSF-080


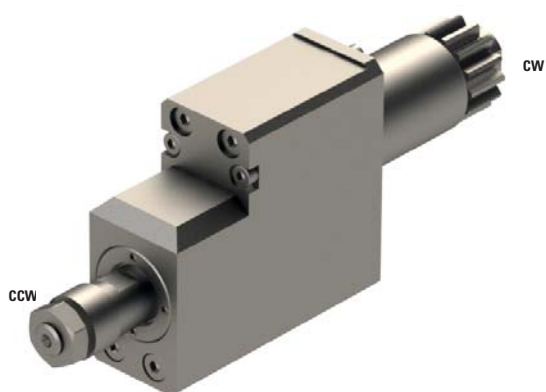


Ø	8
	1:1
RPM max.	10'000
<b>Machines Types</b>	L12-1M7

### Note :

Position T08-T10  
 Max. tool Ø58 mm  
 Max. thickness 3 mm



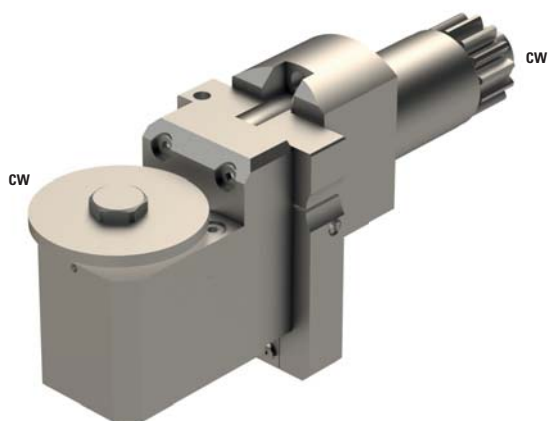
**GSS610** 10 1:1

RPM max. 10'000

**Machines Types** L12-1M7**Note :**Position T08-T10  
Max. tool Ø40 mm  
Max. thickness 4.5 mm



## CITIZEN5-GSP-218

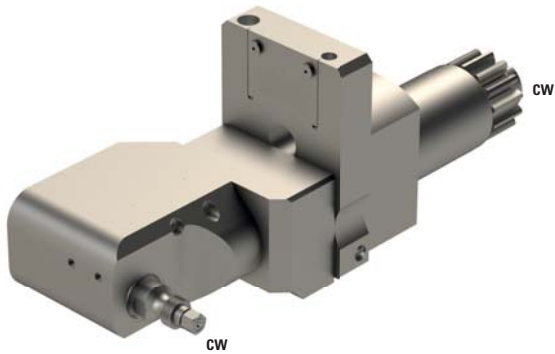


∅	8
⚙️+⚙️	1:1
RPM max.	10'000
<b>Machines Types</b>	L12-1M7
<b>Note :</b>	

Position T08-T10  
Adjustable  $\pm 15^\circ$   
Max. tool  $\varnothing 45$  mm  
Max. thickness 5 mm  
Basis CITIZEN5-PCR  
Head GSP-218



## CITIZEN5-LSH-035

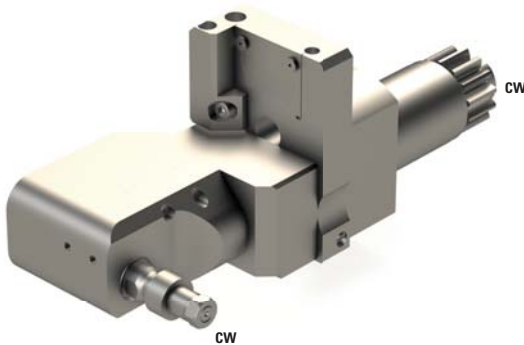


∅	3.5
⚙️	1:1
RPM max.	10'000
<b>Machines Types</b>	L12-1M7
<b>Note :</b>	

Position T08-T10  
Adjustable  $\pm 2^\circ$   
Max. tool  $\varnothing 8$  mm  
Max. thickness 6 mm  
Basis CITIZEN5-PCR  
Head LSH-035



## CITIZEN5-LSH-045

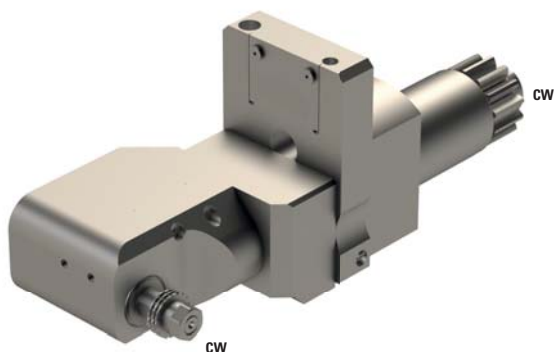


∅	4.5
⚙️	1:1
RPM max.	10'000
<b>Machines Types</b>	L12-1M7
<b>Note :</b>	

Position T08-T10  
Adjustable  $\pm 2^\circ$   
Max. tool  $\varnothing 12$  mm  
Max. thickness 12 mm  
Basis CITIZEN5-PCR  
Head LSH-045



## CITIZEN5-LSH-050

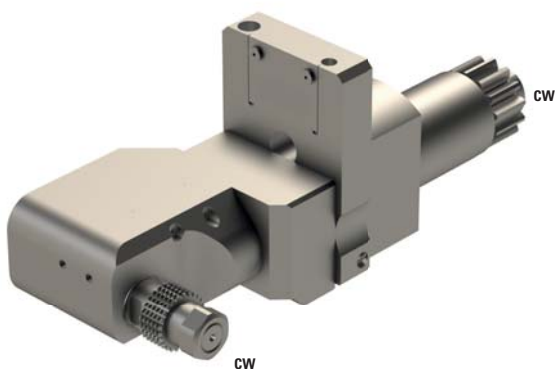


∅	5
⚙️	1:1
RPM max.	10'000
<b>Machines Types</b>	L12-1M7
<b>Note :</b>	

Position T08-T10  
 Adjustable  $\pm 2^\circ$   
 Max. tool  $\varnothing 12$  mm  
 Max. thickness 6 mm  
 Basis CITIZEN5-PCR  
 Head LSH-050



## CITIZEN5-LSH-080

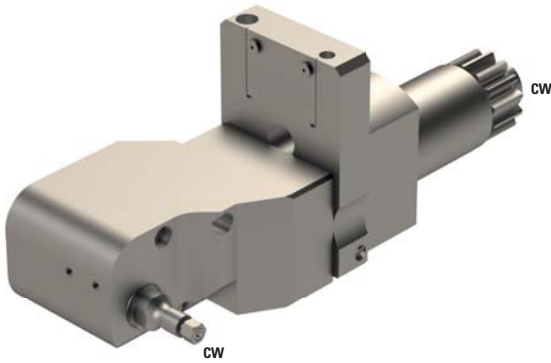


∅	8
⚙️	1:1
RPM max.	10'000
<b>Machines Types</b>	L12-1M7
<b>Note :</b>	

Position T08-T10  
 Adjustable  $\pm 2^\circ$   
 Max. tool  $\varnothing 16$  mm  
 Max. thickness 12 mm  
 Basis CITIZEN5-PCR  
 Head LSH-080



## CITIZEN5-LSH-135

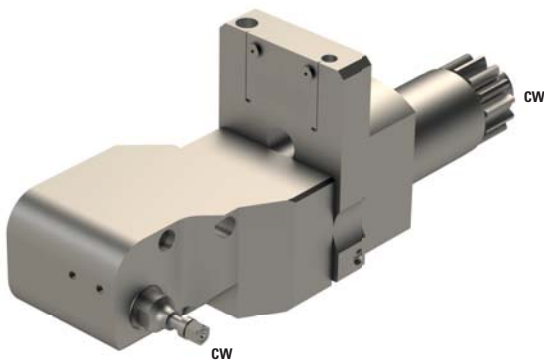


∅	3.5
⚙️+⚙️	1:1
RPM max.	10'000
<b>Machines Types</b>	L12-1M7
<b>Note :</b>	

Position T08-T10  
 Adjustable  $\pm 2^\circ$   
 Max. tool  $\varnothing 8$  mm  
 Max. thickness 6 mm  
 Can only be used with spindle L12-864-571  
 Basis CITIZEN5-PCR  
 Head LSH-135



## CITIZEN5-LSH-235



∅	3.5
⚙️+⚙️	1:1
RPM max.	10'000
<b>Machines Types</b>	L12-1M7
<b>Note :</b>	

Position T08-T10  
 Adjustable  $\pm 2^\circ$   
 Max. tool  $\varnothing 10$  mm  
 Max. thickness 6 mm  
 Can only be used with spindle L12-864-571  
 Basis CITIZEN5-PCR  
 Head LSH-235



## MSH507



Ø 4.5

⚙️➡️⚙️ 1:1

RPM max. 10'000

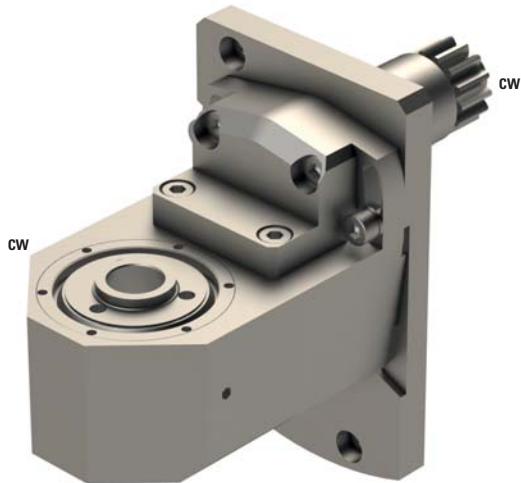
**Machines Types** L12-1M7

**Note :**

Position T10-08  
Max. tool Ø12 mm  
Max. thickness 10 mm



## LSW-515

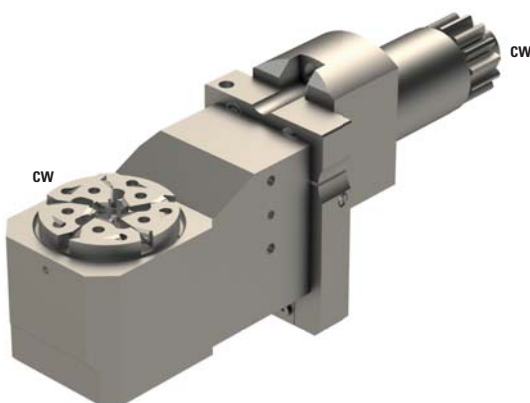


	-
	1:1
<b>RPM max.</b>	10'000
<b>Machines Types</b>	L12-1M7
<b>Note :</b>	

Position T10  
 Adjustable +15°  
 Need 3 tool positions  
 Schwanog cutter head SWG-196617, Z=5, Ø6 mm  
 Gloor cutter head 501-0003, Z=5, Ø6 mm  
 Utilis cutter head 138657, Z=9 or Z=7, Ø6 mm



## CITIZEN5-GSW-210



$\emptyset$	-
	1:1
<b>RPM max.</b>	10'000
<b>Machines Types</b>	L12-1M7
<b>Note :</b>	

Position T08-T10  
 Adjustable  $\pm 10^\circ$   
 PCM cutterhead, Z=5, Ø6 mm  
 Basis CITIZEN5-PCR  
 Head GSW-210



## L12-864-571




	Ø7
	1:1
<b>RPM max.</b>	15'000
<b>Machines Types</b>	L12-1M7
<b>Note :</b>	

Replace the main spindle  
Max. material Ø7 mm



## GDF9001S24



<b>Ø</b>	2x4
	-
<b>RPM max.</b>	-
<b>Machines Types</b>	L12-1M7 M16-4M5 M16-4M8
<b>Note :</b>	

Position back tool post top



## GDF9001S24-II



∅	2x4
---	-----

⚙️+⚙️	-
-------	---

RPM max.	-
----------	---

<b>Machines Types</b>	L12-1M7
	M16-4M5
	M16-4M8

**Note :**

Position back tool post top  
Adjustable ±0.2



## GDF9001S26



∅	2x6
---	-----

⚙️+⚙️	-
-------	---

RPM max.	-
----------	---

<b>Machines Types</b>	L12-1M7
	M16-4M5
	M16-4M8

**Note :**

Position back tool post top

