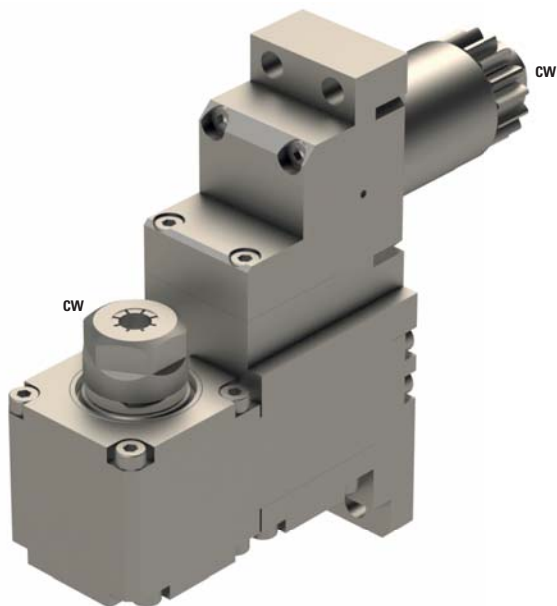




## GSE-2107

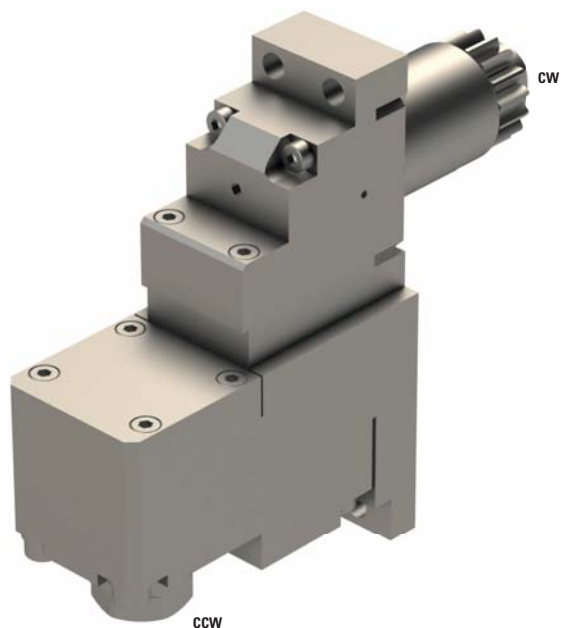




	ER11
	1:1
<b>RPM max.</b>	6'000
<b>Machines Types</b>	K12E-VII K16E-VII
<b>Note :</b>	

Position T12-T14



## GSE-2207

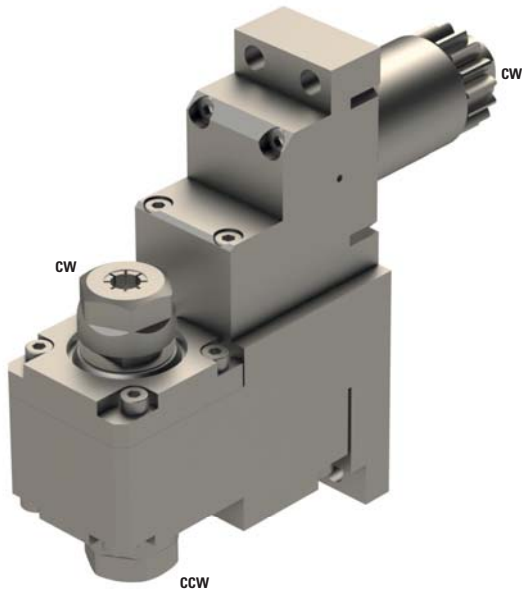



	ER11
	1:1
<b>RPM max.</b>	6'000
<b>Machines Types</b>	K12E-VII K16E-VII
<b>Note :</b>	

Position T12-T14



## GSE-2307



 2xER11

 1:1

**RPM max.** 6'000

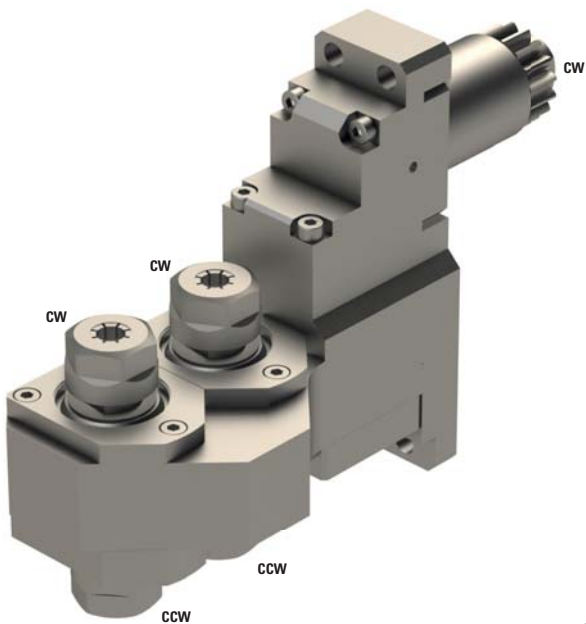
**Machines Types** K12E-VII  
K16E-VII


**Note :**

Position T12-T14



## GSE-2407



 2xER11+2xER11

 1:1

**RPM max.** 6'000

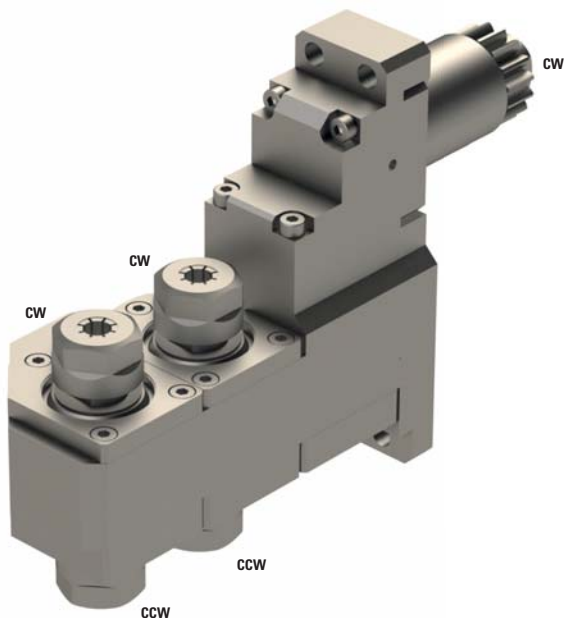
**Machines Types** K12E-VII  
K16E-VII


**Note :**

Position T12-T14 Right



## GSE-2507



 2xER11+2xER11

 1:1

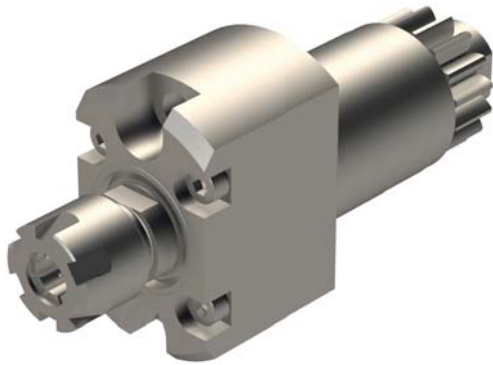
**RPM max.** 6'000

**Machines Types** K12E-VII  
K16E-VII

**Note :**

Position T12-T14 Left

## GSC-807

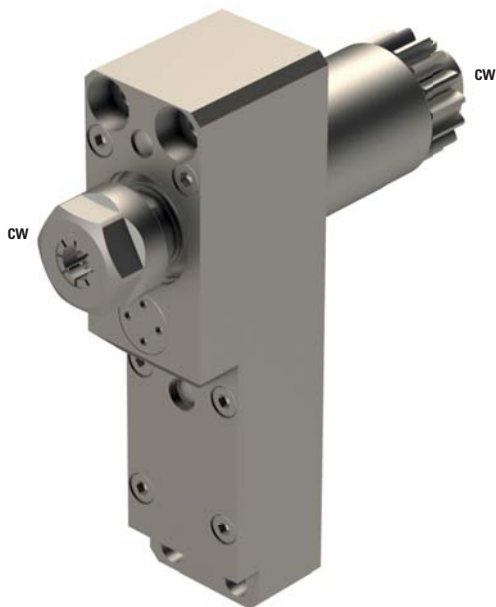




	ER11
	1:1
<b>RPM max.</b>	6'000
<b>Machines Types</b>	K12E-VII K16E-VII
<b>Note :</b>	

Position T11-T14



## GSC-815

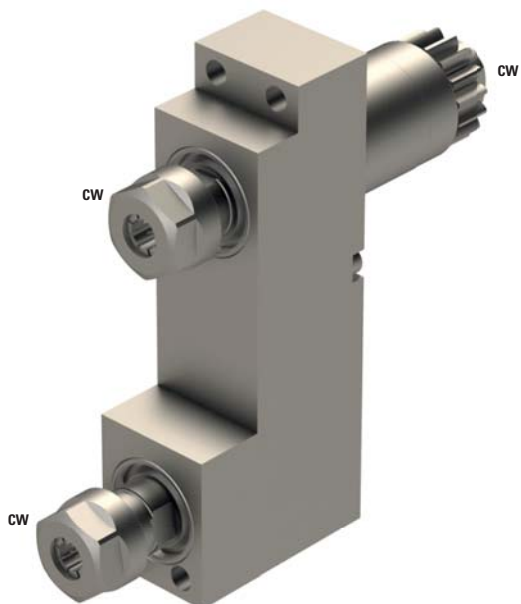



	ER11
	3:2
<b>RPM max.</b>	9'000
<b>Machines Types</b>	K12E-VII K16E-VII
<b>Note :</b>	

Position T12-T14



## GSC-816



	2xER11
---	--------

	1:1 3:2
---	------------

<b>RPM max.</b>	6'000 9'000
-----------------	----------------

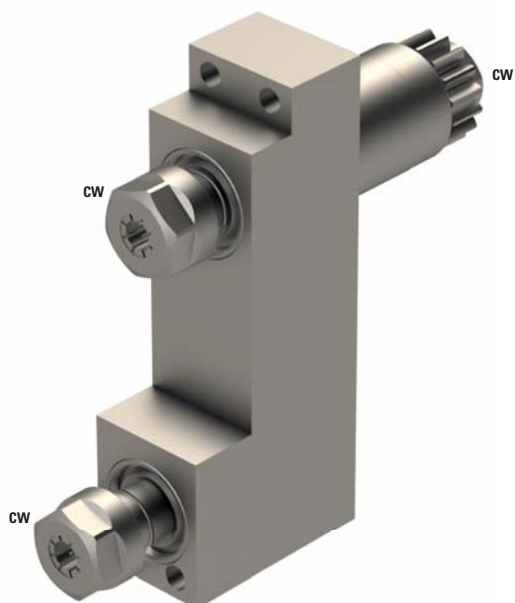
<b>Machines Types</b>	K12E-VII K16E-VII
-----------------------	----------------------


**Note :**

Position T12-T14



## GSC-860



	2xER11
---	--------

	1:1
---	-----

<b>RPM max.</b>	6'000
-----------------	-------

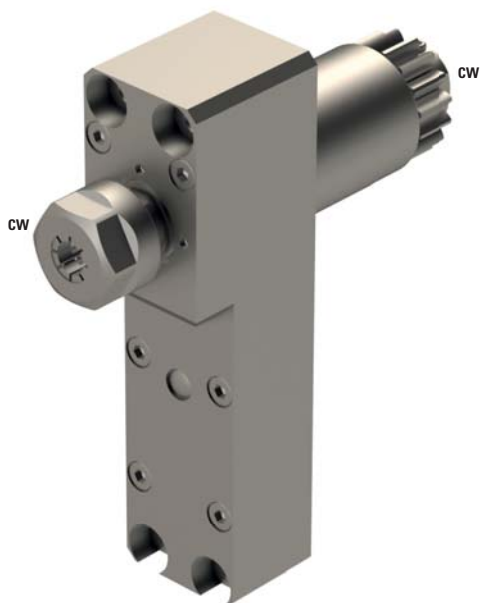
<b>Machines Types</b>	K12E-VII K16E-VII
-----------------------	----------------------



**Note :**

Position T12-T14



## GSC-850-2X

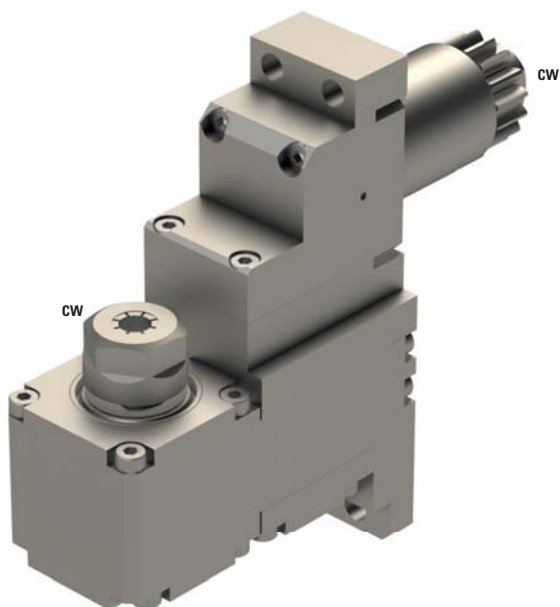




	ER11
	1:2
<b>RPM max.</b>	12'000
<b>Machines Types</b>	K12E-VII K16E-VII
<b>Note :</b>	

Position T12-T14



## GSE-2107-2X

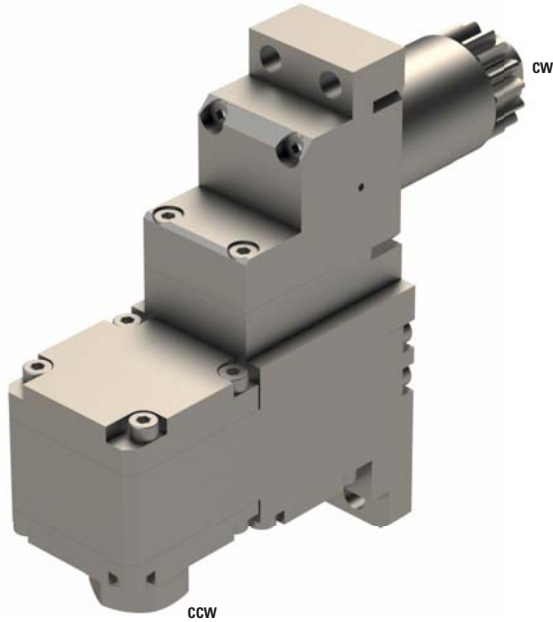



	ER11
	1:2
<b>RPM max.</b>	12'000
<b>Machines Types</b>	K12E-VII K16E-VII
<b>Note :</b>	

Position T12-T14



## GSE-2207-2X



 ER11

 1:2

**RPM max.** 12'000

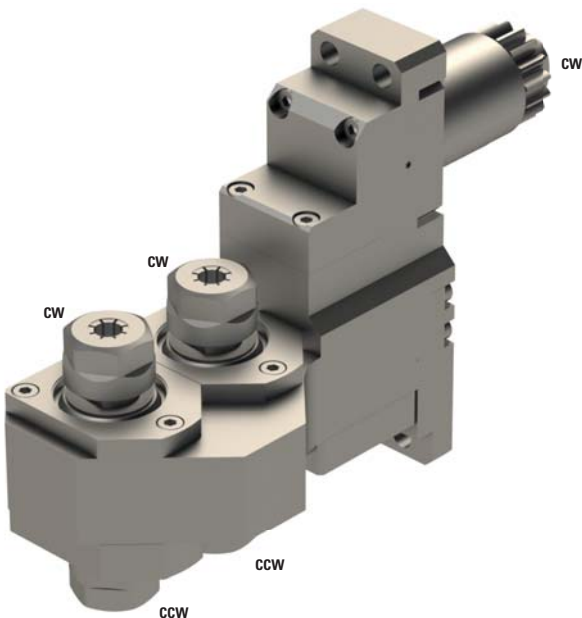
**Machines Types** K12E-VII  
K16E-VII


**Note :**

Position T12-T14



## GSE-2407-2X



 2xER11+2xER11

 1:2

**RPM max.** 12'000

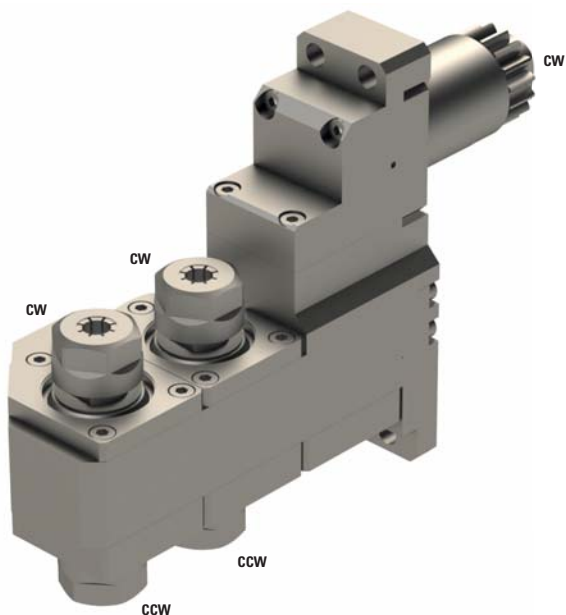
**Machines Types** K12E-VII  
K16E-VII

**Note :**

Position T12-T14 Right



## GSE-2507-2X



2xER11+2xER11



1:2

RPM max.

12'000

Machines Types

K12E-VII  
K16E-VII

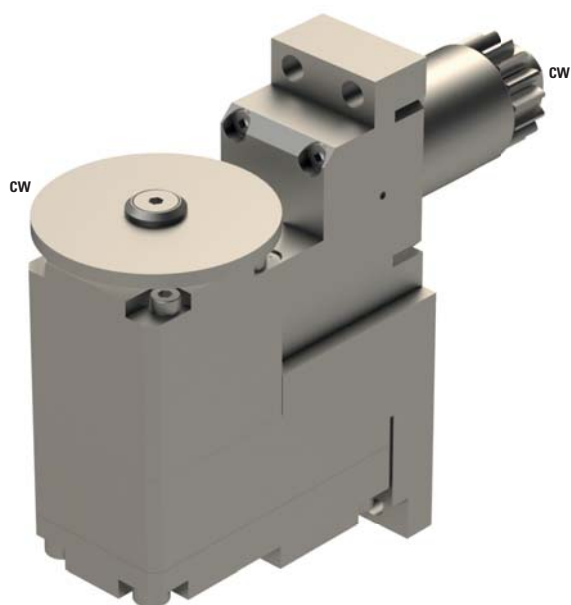
Note :



Position T12-T14 Left





## GSS-2145

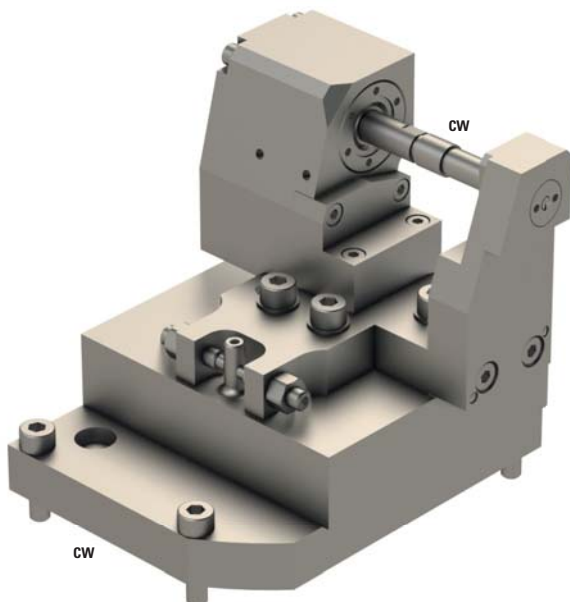




	Ø8
	1:1
<b>RPM max.</b>	6'000
<b>Machines Types</b>	K12E-VII K16E-VII
<b>Note :</b>	

Position T12-T14  
 Max. tool Ø58 mm  
 Max. cutter thickness 3 mm



## GSH-035

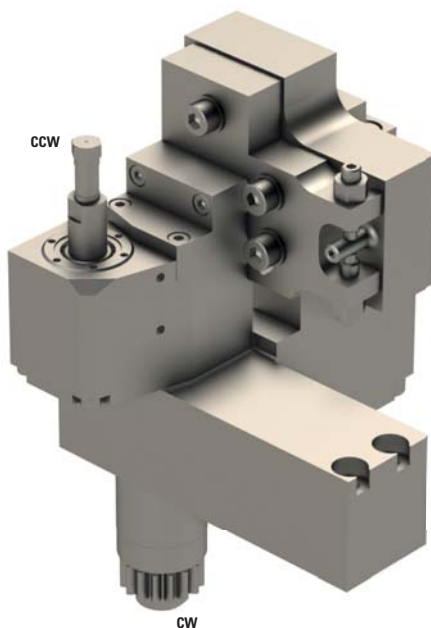




	Ø3.5
	3:2
<b>RPM max.</b>	9'000
<b>Machines Types</b>	K12E-VII K16E-VII
<b>Note :</b>	

Position T12-T14  
 Need 2 tool positions  
 Adjustable  $\pm 2^\circ$   
 Distance with main spindle 5 mm  
 For hobbing disk Ø8 mm, 8 mm



## GSH-036

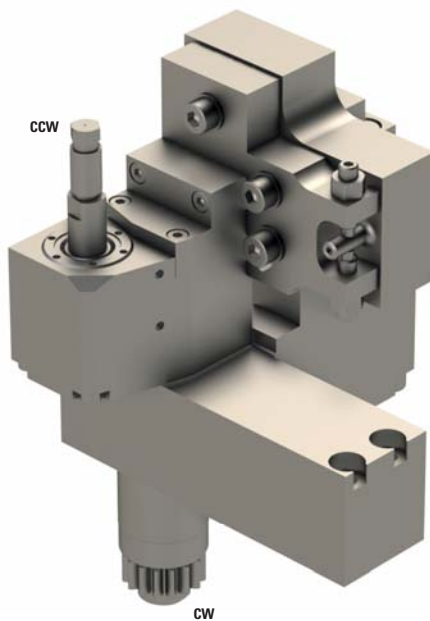



	Ø3.5
	3:2
<b>RPM max.</b>	9'000
<b>Machines Types</b>	K12E-VII K16E-VII
<b>Note :</b>	

Position T12-T14  
 Need 1 tool position  
 Adjustable  $\pm 1^\circ$   
 Distance with the main spindle 5 mm  
 For hobbing disk Ø8 mm, 8 mm



## GSH-036-L



	Ø3.5
---	------

	3:2
---	-----

<b>RPM max.</b>	9'000
-----------------	-------

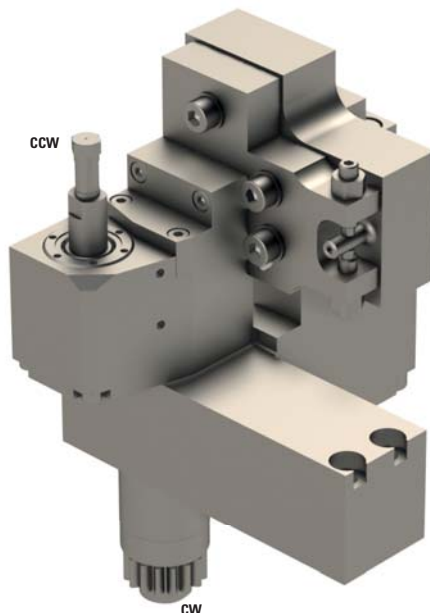
<b>Machines Types</b>	K12E-VII K16E-VII
-----------------------	----------------------


**Note :**

Position T12-T14  
 Need 1 tool position  
 Adjustable  $\pm 1^\circ$   
 Distance with the main spindle 5 mm  
 For hobbing disk  $\varnothing 8$  mm, 12 mm



## GSH-037



	Ø3.5
---	------

	3:2
---	-----

<b>RPM max.</b>	9'000
-----------------	-------

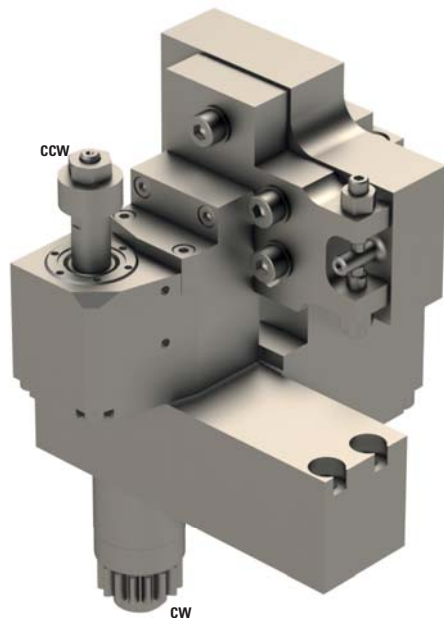
<b>Machines Types</b>	K12E-VII K16E-VII
-----------------------	----------------------


**Note :**

Position T12-T14  
 Need 1 tool position  
 Adjustable  $\pm 1^\circ$   
 Distance with the main spindle 15 mm  
 For hobbing disk  $\varnothing 16$  mm, 8 mm



## GSH-038



	Ø5
---	----

	3:2
---	-----

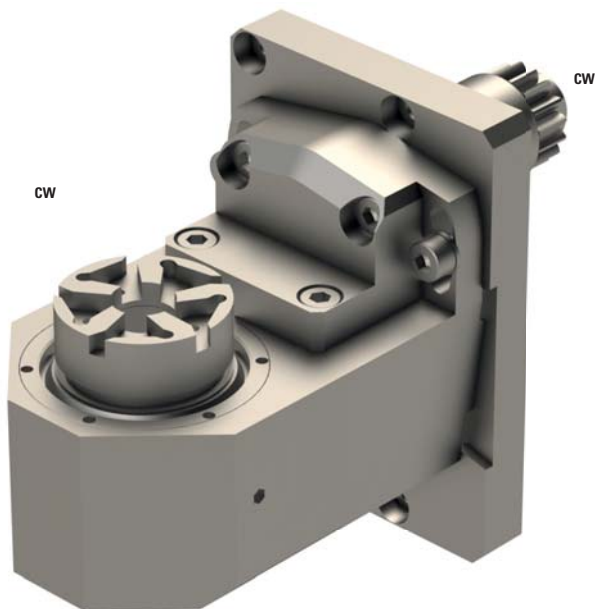
<b>RPM max.</b>	9'000
-----------------	-------

<b>Machines Types</b>	K12E-VII K16E-VII
-----------------------	----------------------

**Note :**

Position T12-T14  
 Need 1 tool position  
 Adjustable  $\pm 1^\circ$   
 Distance with the main spindle 15 mm  
 For hobbing disk  $\varnothing 16$  mm, 8 mm

## GSW-101

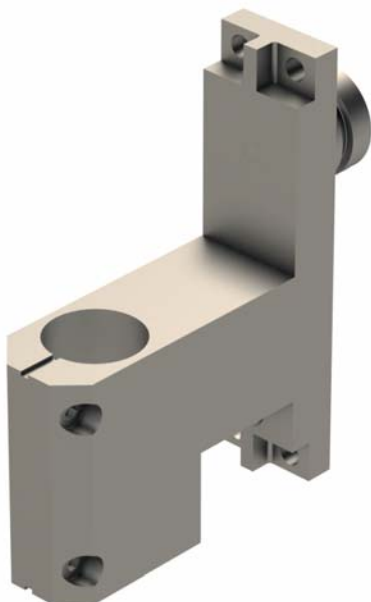


	-
	1:1
<b>RPM max.</b>	6'000
<b>Machines Types</b>	K12E-VII K16E-VII
<b>Note :</b>	

Position T12-T14  
Need 3 tool positions  
Adjustable  $\pm 15^\circ$   
Schwanog cutter head SWG-196617, Z=5,  $\varnothing 6$  mm  
Gloor cutter head 501-0003, Z=5,  $\varnothing 6$  mm  
Utilis cutter head 138657, Z=9 or Z=7,  $\varnothing 6$  mm



## BDF-101-HF



∅	22
---	----

⚙️+⚙️	-
-------	---

RPM max.	-
----------	---

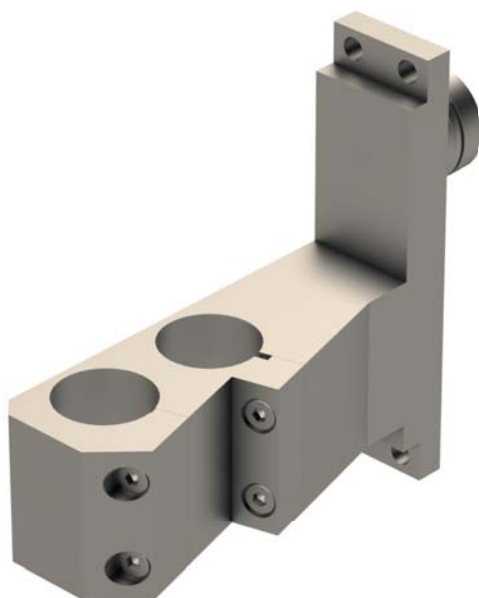
<b>Machines Types</b>	K12E-VII K16E-VII
-----------------------	----------------------

<b>Note :</b>	
---------------	--

Position T12-T14  
For high frequenz spindel



## BDF-102-HF



∅	2x22
---	------

⚙️+⚙️	-
-------	---

RPM max.	-
----------	---

<b>Machines Types</b>	K12E-VII K16E-VII
-----------------------	----------------------

<b>Note :</b>	
---------------	--

Position T12-T14  
For high frequenz spindel  
Distance from the front to the support face 49.5 mm



## BDF-103-HF



∅	2x22
---	------

⚙️+⚙️	-
-------	---

RPM max.	-
----------	---

<b>Machines Types</b>	K12E-VII K16E-VII
-----------------------	----------------------

**Note :**

Position T12-T14  
 For high frequenz spindel  
 Distance from the front to the support face 56.5 mm



## BDF-104



∅	20
---	----

⚙️+⚙️	-
-------	---

RPM max.	-
----------	---

<b>Machines Types</b>	K12E-VII K16E-VII
-----------------------	----------------------

**Note :**

Position T12-T14



## BDF-104-HF



∅	20
---	----

⚙️	-
----	---

RPM max.	-
----------	---

<b>Machines Types</b>	K12E-VII K16E-VII
-----------------------	----------------------

<b>Note :</b>	
---------------	--

Position T12-T14  
For high frequenz spindel



## BDF-105



∅	19.05
---	-------

⚙️	-
----	---

RPM max.	-
----------	---

<b>Machines Types</b>	K12E-VII K16E-VII
-----------------------	----------------------

<b>Note :</b>	
---------------	--

Position T12-T14





## BDF-106



Ø	2x20
---	------

⚙️+⚙️	-
-------	---

RPM max.	-
----------	---

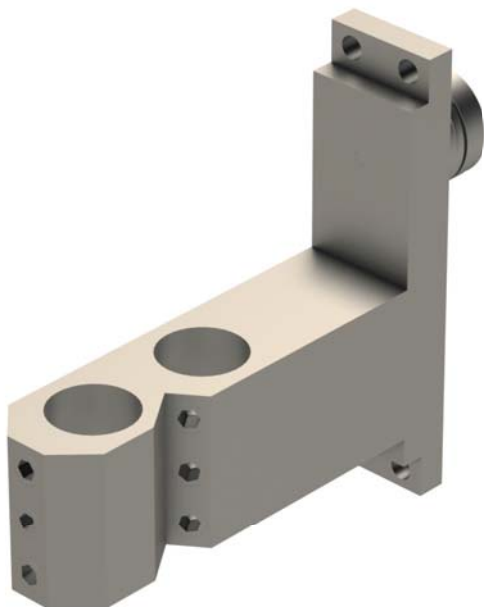
<b>Machines Types</b>	K12E-VII K16E-VII
-----------------------	----------------------

<b>Note :</b>	
---------------	--

Position T12-T14



## BDF-107



Ø	2x19.05
---	---------

⚙️+⚙️	-
-------	---

RPM max.	-
----------	---

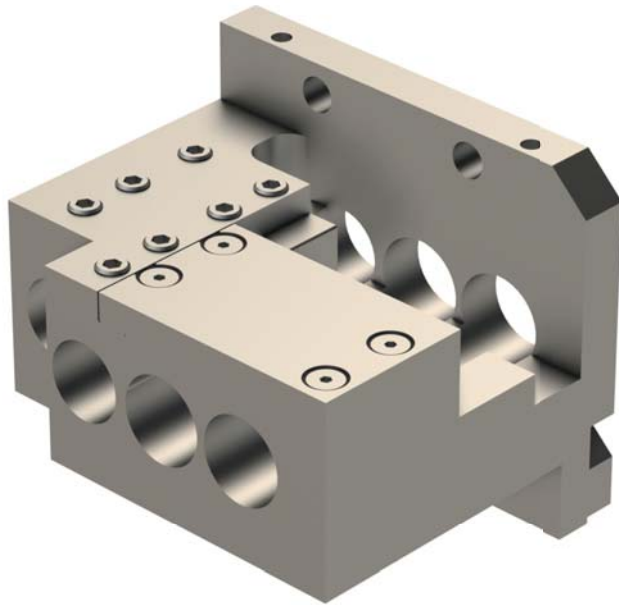
<b>Machines Types</b>	K12E-VII K16E-VII
-----------------------	----------------------

<b>Note :</b>	
---------------	--

Position T12-T14



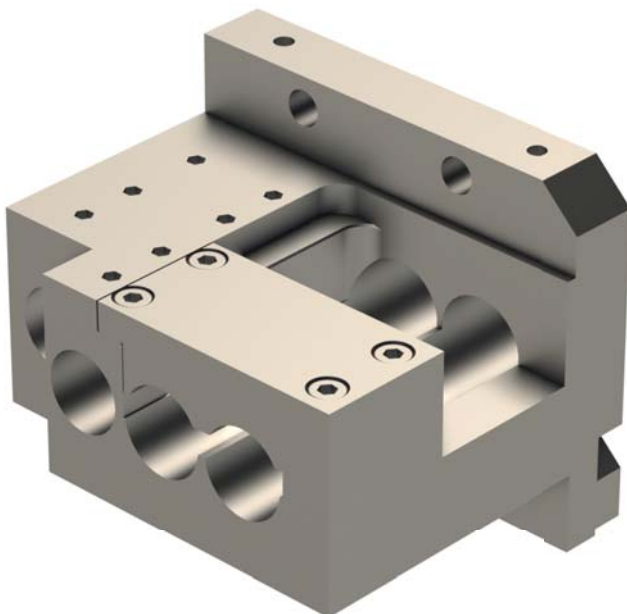
## U151HF-IBAG



∅	2x20+2x22
⚙️+⚙️	-
RPM max.	-
<b>Machines Types</b>	K12E-VII K16E-VII
<b>Note :</b>	

For motor spindle Ibag  
Replace the U150B or U151B

## U151HF-MHF



∅	2x20+2x22
⚙️+⚙️	-
RPM max.	-
<b>Machines Types</b>	K12E-VII K16E-VII
<b>Note :</b>	

For motor spindle Meyrat  
Replace the U150B or U151B