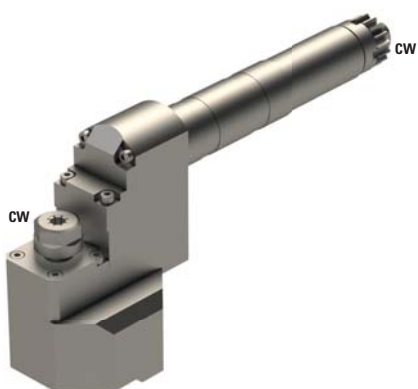



## GSE-507-DE



 ER11+ER08

 1:1

**RPM max.** 8'000

**Machines Types**

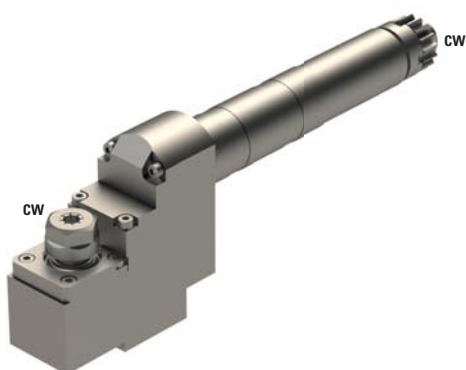
M212-C  
M212-V  
M216-C  
M216-V  
M312-III  
M312-V  
M316-III  
M316-V


**Note :**

Position T06-T09



## GSE-707



 ER11

 1:1

**RPM max.** 8'000

**Machines Types**

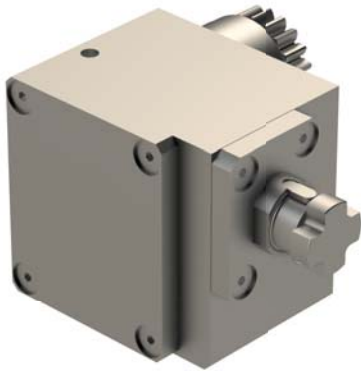
M212-C  
M212-V  
M216-C  
M216-V  
M312-III  
M312-V  
M316-III  
M316-V


**Note :**

Position T06-T09



## GSE-90G-4




	16
	4:1
<b>RPM max.</b>	2'000
<b>Machines Types</b>	C16-VII C16-IX
<b>Note :</b>	



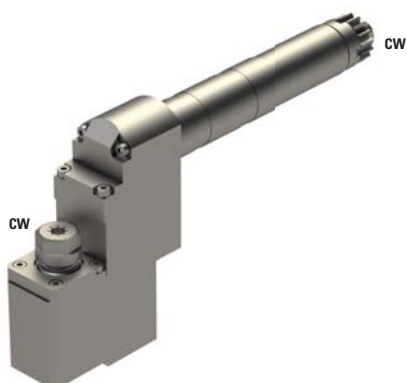
## GSC-707





	11
	1:1
<b>RPM max.</b>	5'000
<b>Machines Types</b>	C16-VII C16-IX
<b>Note :</b>	



## GSE-508



	ER11
	1:1
<b>RPM max.</b>	8'000
<b>Machines Types</b>	M212-C M212-V M216-C M216-V M312-III M312-V M316-III M316-V


**Note :**

Position T06-T09



## GSE-810



	ER16
	-
<b>RPM max.</b>	-
<b>Machines Types</b>	C16-VII C16-IX C32

**Note :**



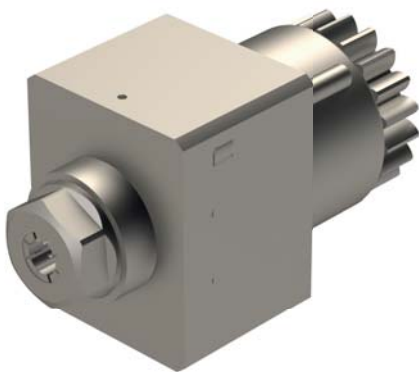
## GSE-807



	ER11
	-
RPM max.	-
<b>Machines Types</b>	C16-VII C16-IX
<b>Note :</b>	



## GSE-808



	ER11
	-
RPM max.	-
<b>Machines Types</b>	C16-VII C16-IX
<b>Note :</b>	

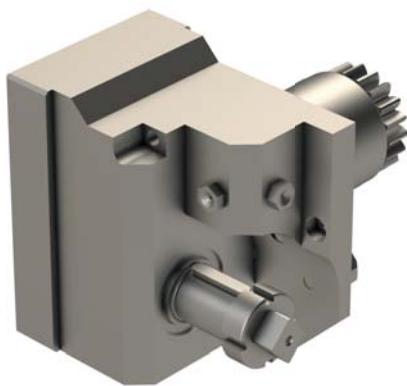



## GSE-8-3X



	8
	1:3
<b>RPM max.</b>	15'000
<b>Machines Types</b>	C16-VII C16-IX
<b>Note :</b>	



**GSF-130**

 16

 1:1

**RPM max.** 5'000

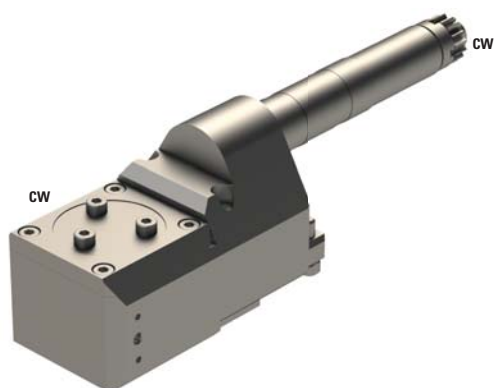
**Machines Types** C16-VII  
C16-IX


**Note :**

Max. tool Ø50 mm



## LSW-424



 -

 1:1

**RPM max.** 8'000

### Machines Types

M212-C  
M212-V  
M216-C  
M216-V  
M312-III  
M312-V  
M316-III  
M316-V

### Note :

Position T08-T09  
Adjustable  $\pm 10^\circ$   
Schwanog cutter head SWG-196617, Z=5,  $\varnothing 6$  mm  
Gloor cutter head 501-0002, Z=6,  $\varnothing 12$  mm  
Utilis cutter head 137876/137568, Z=9 or Z=12,  $\varnothing 12$  mm



## GDF901



∅	19.05
---	-------

⚙️	-
----	---

RPM max.	-
----------	---

### Machines Types

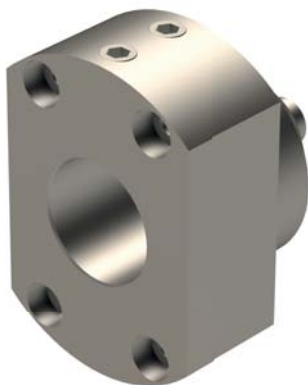
M212-C  
M212-V  
M216-C  
M216-V  
M312-III  
M312-V  
M316-III  
M316-V

### Note :

Position T06-T09



## SAU-225



∅	25
---	----

⚙️	-
----	---

RPM max.	-
----------	---

### Machines Types

C16-VII  
C16-IX  
C32

### Note :





## GDF902



Ø 2x19.05

⚙️ -

RPM max. -

**Machines Types**

M212-C  
M212-V  
M216-C  
M216-V  
M312-III  
M312-V  
M316-III  
M316-V

**Note :**

Position T06-T09



## SAU-319



Ø 19.05

⚙️ -

RPM max. -

**Machines Types**

C16-VII  
C16-IX

**Note :**

