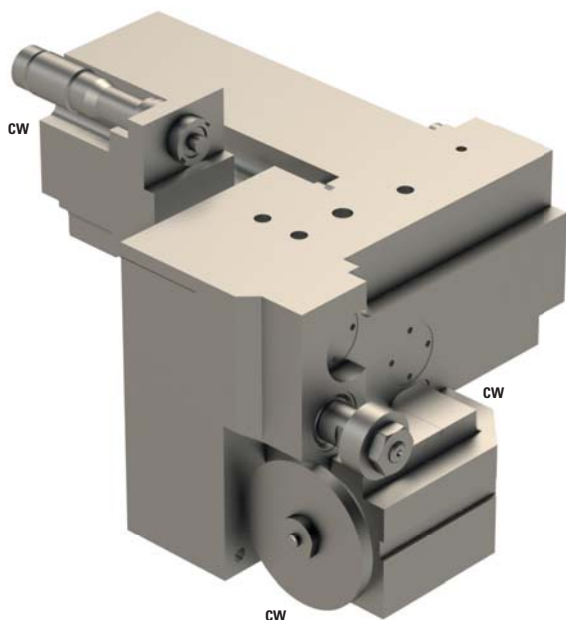

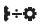


U37B-B12E

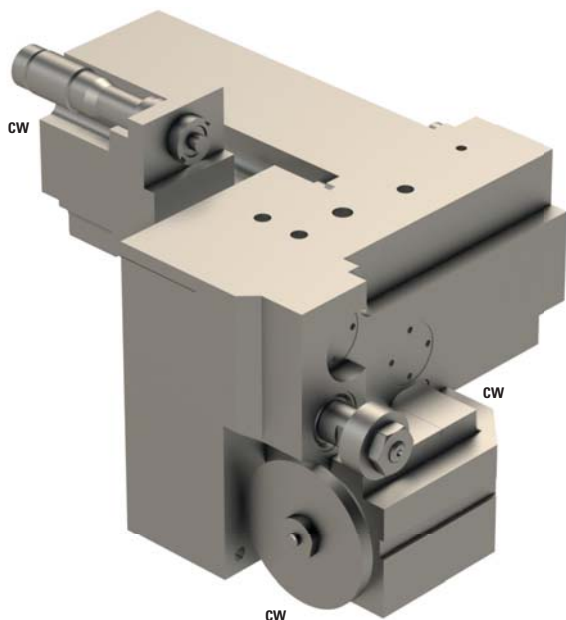



	1xØ6+1xØ6
	1:1
RPM max.	8'000
Machines Types	B12E-VI B16E-VI
Note :	

Servo tuning from FANUC recommended
 Arbor Ø6mm
 Max. tool Ø20 mm
 Max. cutter thickness 7.5 mm
 Arbor Ø8 mm
 Max. tool Ø45 mm
 Max. cutter thickness 4 mm



U37C-B12E

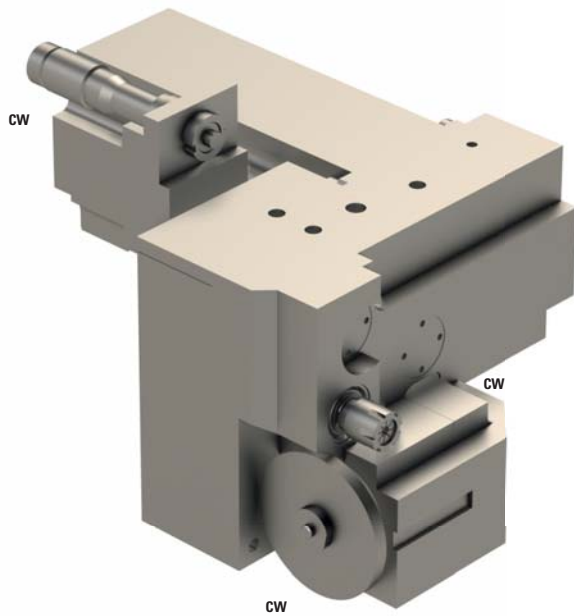


	1xØ5+1xØ8
	1:1
RPM max.	8'000
Machines Types	B12E-VI B16E-VI
Note :	

Servo tuning from FANUC recommended
 Arbor Ø5mm
 Max. tool Ø20 mm
 Max. cutter thickness 7.5 mm
 Arbor Ø8 mm
 Max. tool Ø45 mm
 Max. cutter thickness 4 mm



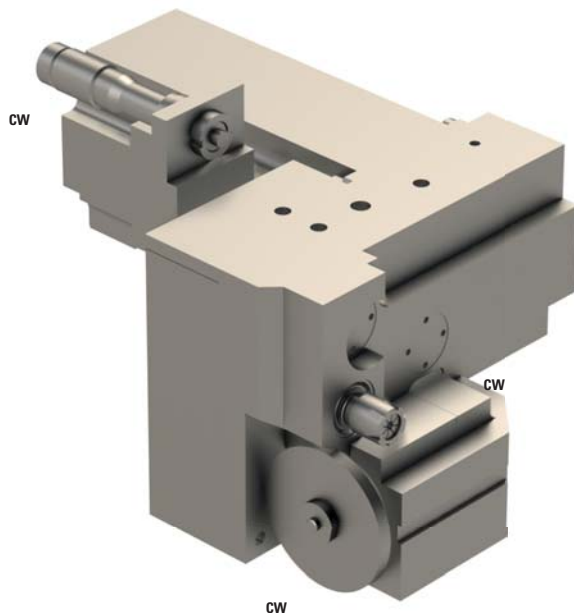
U39B-B12E




	1xER08+1xØ8
	1:1
RPM max.	8'000
Machines Types	B12E-VI B16E-VI
Note :	

Servo tuning from FANUC recommended
 ER08 with spindle Ø6mm
 Max. tool Ø20 mm
 Max. cutter thickness 7.5 mm
 Arbor Ø8 mm
 Max. tool Ø45 mm
 Max. cutter thickness 4 mm

U39C-B12E



	1xER08+1xØ8
	1:1
RPM max.	8'000
Machines Types	B12E-VI B16E-VI
Note :	

Servo tuning from FANUC recommended
 ER08 with spindle Ø5mm
 Max. tool Ø20 mm
 Max. cutter thickness 7.5 mm
 Arbor Ø8 mm
 Max. tool Ø45 mm
 Max. cutter thickness 4 mm