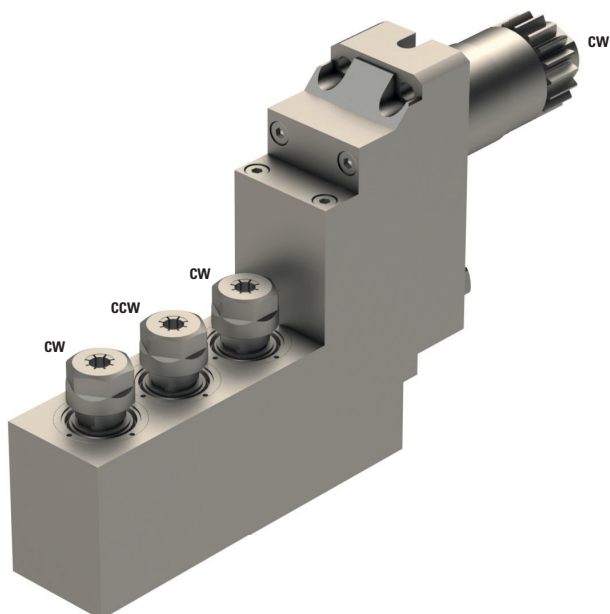



BSE-3106



	3xER11
---	--------

	1:1
---	-----

RPM max.	5'000
----------	-------

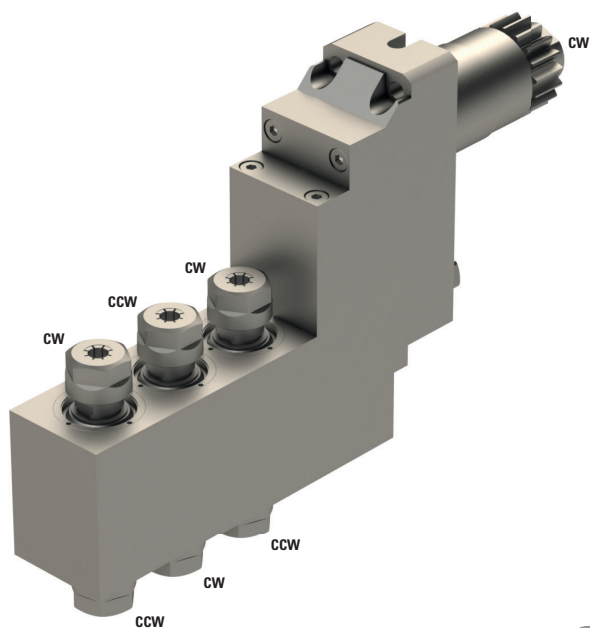
Machines Types	A232-VII	M220-III
	A32-VII	M220-V
	A320-VII	M232-III
	D25-VII	M232-V
	L32-1M8	M320-III
	L32-1M10	M320-V
	L32-1M12	M332-III
	L220-2M8	M332-V
	L220-2M10	M32-4M5
		M32-4M8


Note :


Position T08-09
 Max. 2 tool holders
 CITIZEN original article BSE-607



BSE-3205



	3xER11+3xER11
---	---------------

	1:1
---	-----

RPM max.	5'000
----------	-------

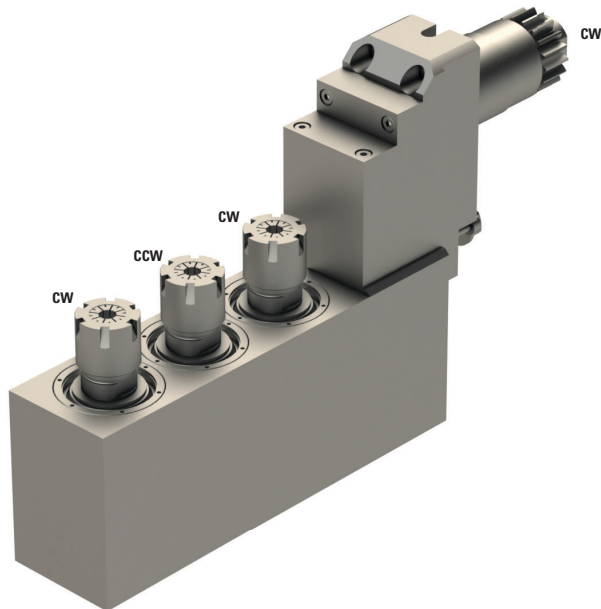
Machines Types	A232-VII	M220-III
	A32-VII	M220-V
	A320-VII	M232-III
	D25-VII	M232-V
	L32-1M8	M320-III
	L32-1M10	M320-V
	L32-1M12	M332-III
	L220-2M8	M332-V
	L220-2M10	M32-4M5
		M32-4M8


Note :


Position T08-09
 Max. 2 tool holders
 CITIZEN original article BSE-707



BSE-3209



 3xER16

 1:1

RPM max. 5'000

Machines Types

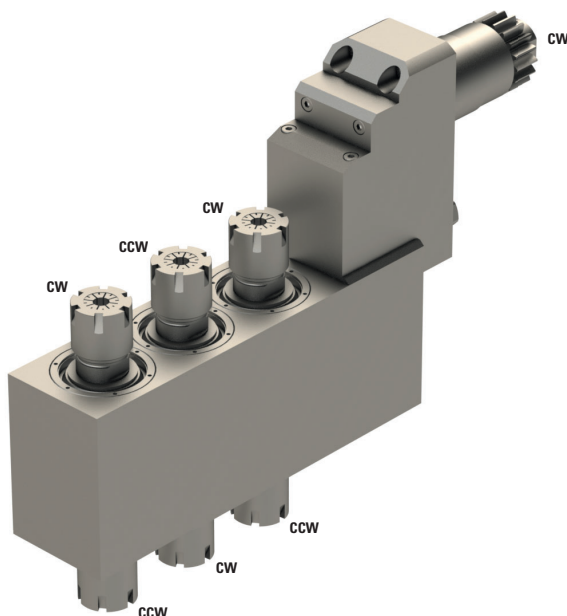
A232-VII	M220-III
A32-VII	M220-V
A320-VII	M232-III
D25-VII	M232-V
L32-1M8	M320-III
L32-1M10	M320-V
L32-1M12	M332-III
L220-2M8	M332-V
L220-2M10	M32-4M5
	M32-4M8


Note :

Position T08-09
 Max. 2 tool holders
 CITIZEN original article GSE-1610



BSE-3210



 3xER16+3xER16

 1:1

RPM max. 5'000

Machines Types

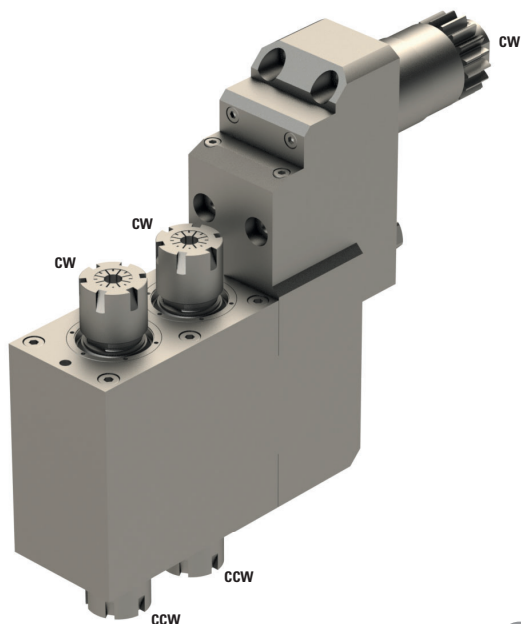
A232-VII	M220-III
A32-VII	M220-V
A320-VII	M232-III
D25-VII	M232-V
L32-1M8	M320-III
L32-1M10	M320-V
L32-1M12	M332-III
L220-2M8	M332-V
L220-2M10	M32-4M5
	M32-4M8


Note :

Position T08-09
 Max. 2 tool holders
 CITIZEN original article GSE-1810



BSE-3207



 2xER16+2xER16

 1:1

RPM max. 5'000

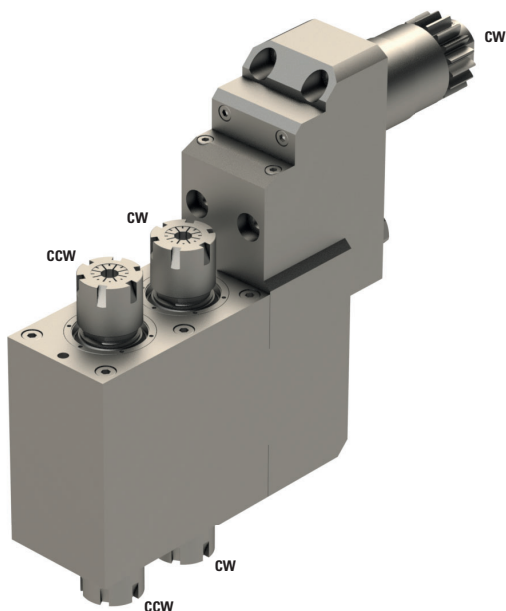
Machines Types	A232-VII	M232-III
	A32-VII	M232-V
A320-VII	M320-III	
L32-1M8	M320-V	
L32-1M10	M332-III	
L32-1M12	M332-V	
M220-III	M32-4M5	
M220-V	M32-4M8	


Note :


Position T10



BSE-3207-II



 2xER16+2xER16

 1:1

RPM max. 5'000

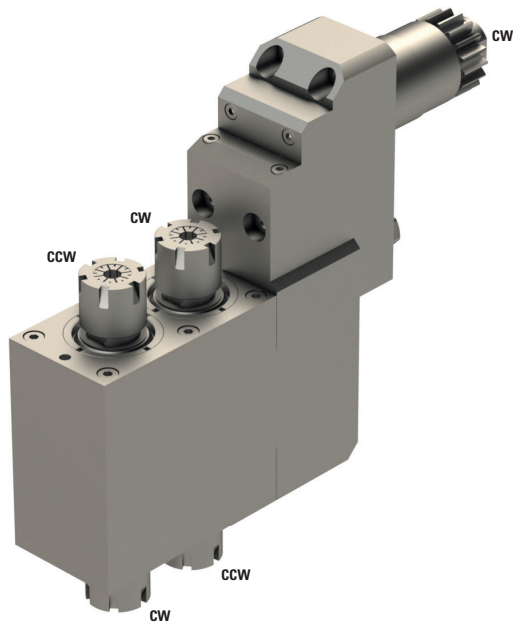
Machines Types	A232-VII	M232-III
	A32-VII	M232-V
A320-VII	M320-III	
L32-1M8	M320-V	
L32-1M10	M332-III	
L32-1M12	M332-V	
M220-III	M32-4M5	
M220-V	M32-4M8	


Note :

Position T10



BSE-3207-III



 2xER16+2xER16

 1:1

RPM max. 5'000

Machines Types

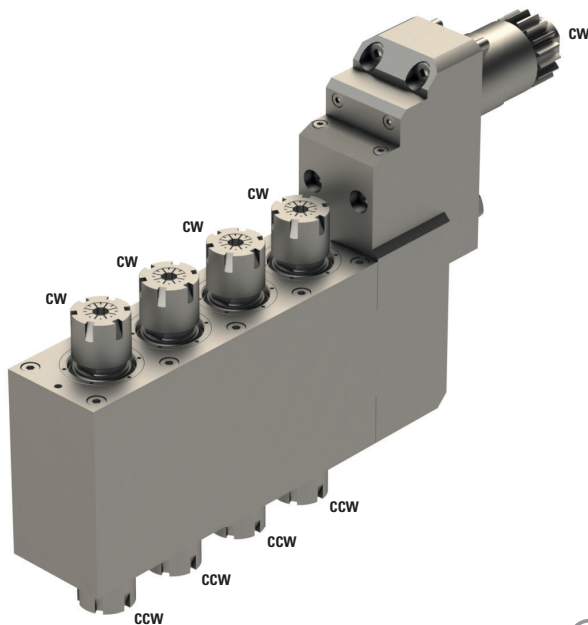
A232-VII	M232-III
A32-VII	M232-V
A320-VII	M320-III
L32-1M8	M320-V
L32-1M10	M332-III
L32-1M12	M332-V
M220-III	M32-4M5
M220-V	M32-4M8


Note :

Position T10



BSE-3208



 4xER16+4xER16

 1:1

RPM max. 5'000

Machines Types

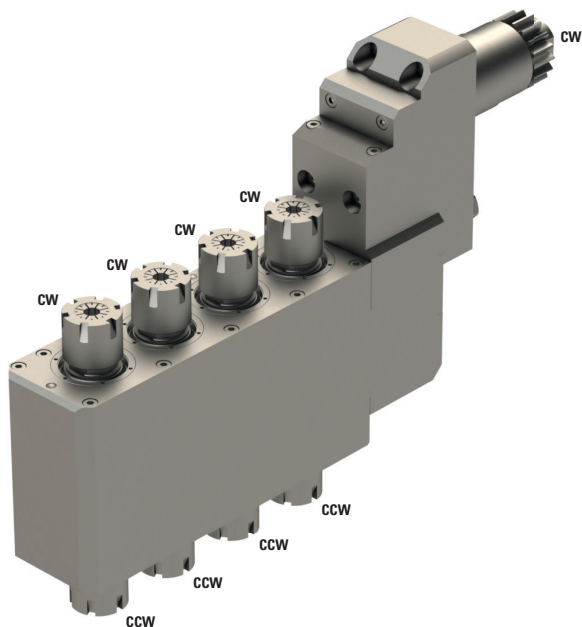
A232-VII
A32-VII
A320-VII


Note :

Position T10
With Belts



BSE-3208-II



	4xER16+4xER16
---	---------------

	1:1
---	-----

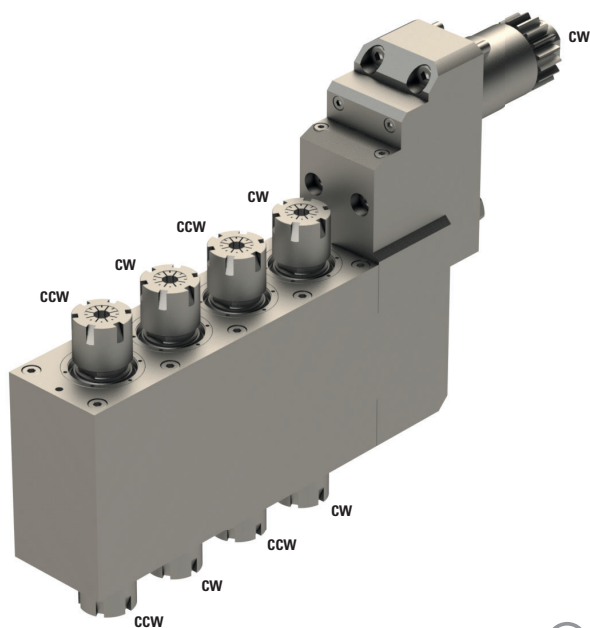
RPM max.	5'000
-----------------	-------


Machines Types	A232-VII A32-VII A320-VII
-----------------------	---------------------------------

Note :

Position T10
With Gears

BSE-3208-III



	4xER16+4xER16
---	---------------

	1:1
---	-----

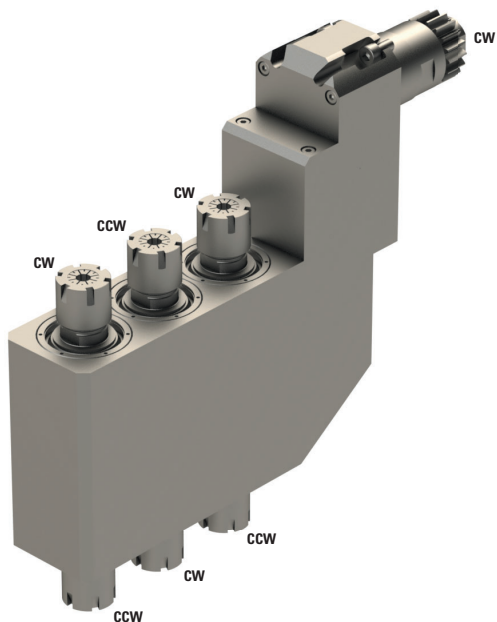
RPM max.	5'000
-----------------	-------


Machines Types	A232-VII A32-VII A320-VII
-----------------------	---------------------------------

Note :

Position T10
With Gears

GSE-1710



 3xER16+3xER16

 1:1

RPM max. 5'000

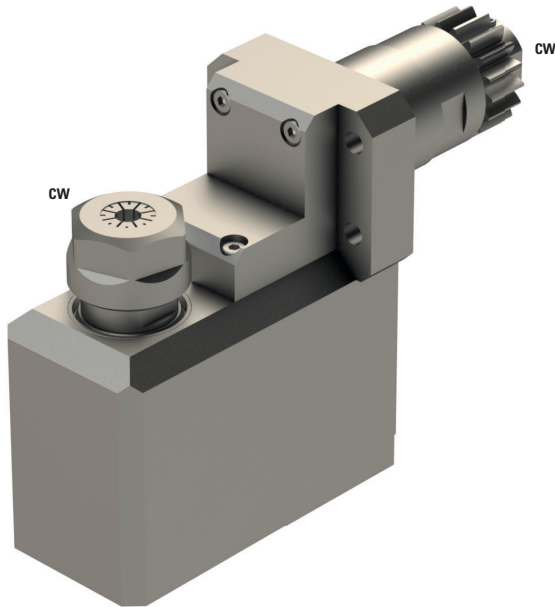
Machines Types
A232-VII
A32-VII
A320-VII



Note :

Position T10



BSC-1330



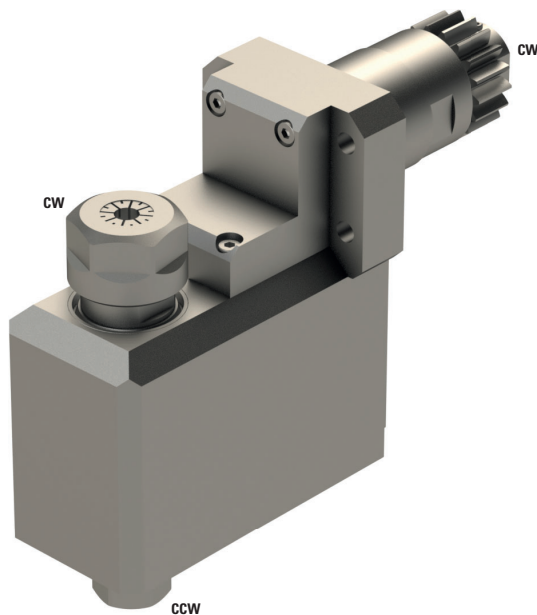
	ER16
	1:1
RPM max.	5'000
Machines Types	A232-VII A32-VII L32-1M8 L32-1M10 L32-1M12



Note :

Position T31-35
Need 2 tool positions



BSC-2330



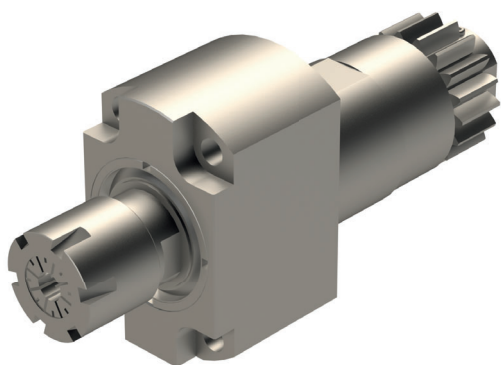
	1xER16+1xER11
	1:1
RPM max.	5'000
Machines Types	A232-VII A32-VII L32-1M8 L32-1M10 L32-1M12


Note :

Position T31-35
Need 2 tool positions



GSC-1110



	ER16
---	------

	1:1
---	-----

RPM max.	8'000
-----------------	-------

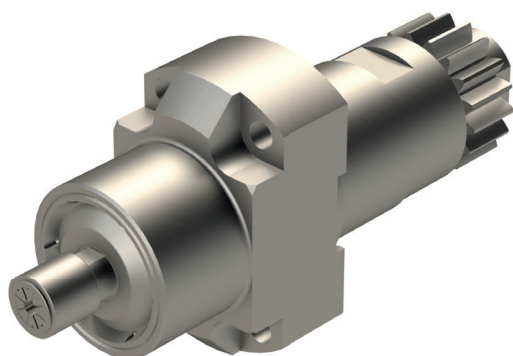
Machines Types	A20-3F7N	M220-III
	A232-VII	M220-V
	A32-VII	M232-III
	A320-VII	M232-V
	D25-VII	M320-III
	L20E-2M8	M320-V
	L20E-2M10	M332-III
	L20E-2M12	M332-V
	L32-1M8	M32-4M5
	L32-1M10	M32-4M8
	L32-1M12	


Note :


Position T06-T10 according to the machine



GSC-1110-4X



	ER08
---	------

	1:3.8
---	-------

RPM max.	30'400
-----------------	--------

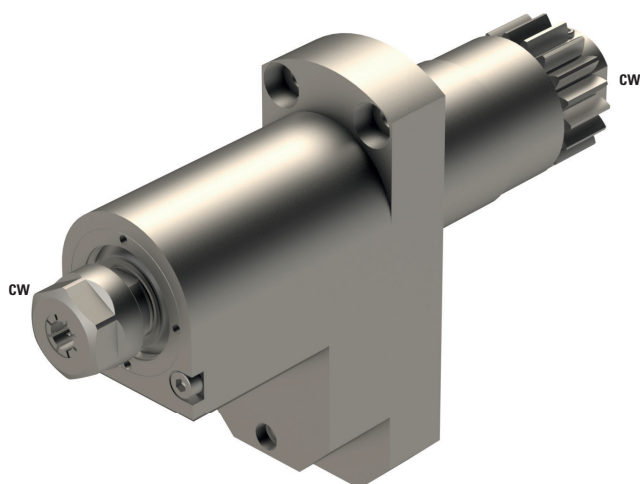
Machines Types	A20-3F7N	M220-V
	A232-VII	M232-III
	A32-VII	M232-V
	L20E-2M8	M320-III
	L20E-2M10	M320-V
	L20E-2M12	M332-III
	L32-1M8	M332-V
	L32-1M10	M32-4M5
	L32-1M12	M32-4M8
	M220-III	


Note :

Position T06-T08 according to the machine



BSC-610-L-3X



	ER11
---	------

	1:3
---	-----

RPM max.	15'000
-----------------	--------

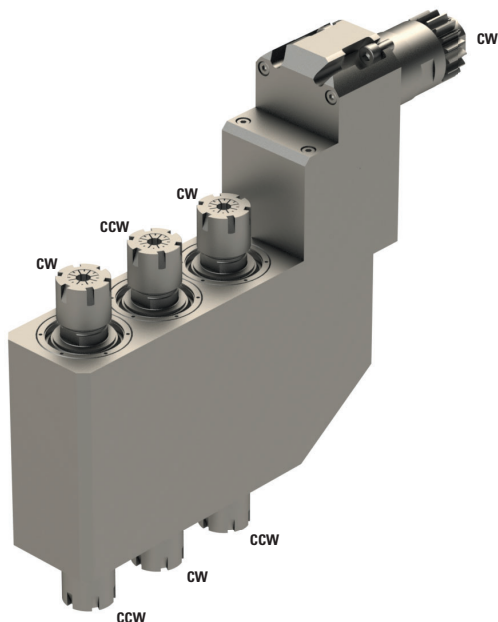
Machines Types	A232-VII	M232-III
	A32-VII	M232-V
	A320-VII	M320-III
	L32-1M8	M320-V
	L32-1M10	M332-III
	L32-1M12	M332-V
	M220-III	M32-4M5
	M220-V	M32-4M8

Note :

Position T10



GSE-1710-2X



3xER16+3xER16



1:2

RPM max.

10'000

Machines Types

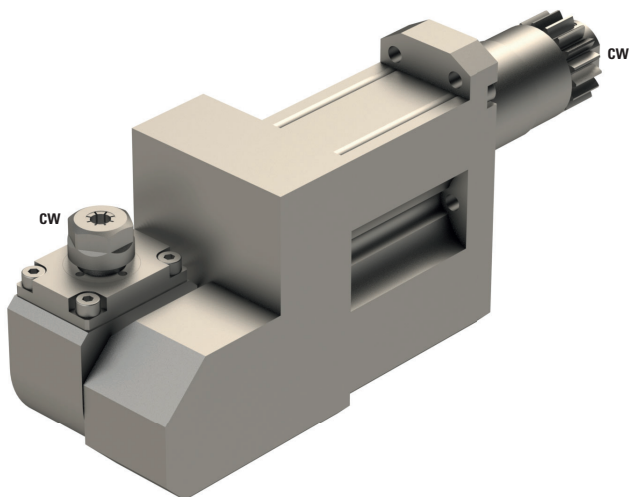
A232-VII
 A32-VII
 A320-VII
 L32-1M8
 L32-1M10
 L32-1M12


Note :

Position T10 or T08-T09
 On block L32U30B (Version X and VIII) Position T10
 On block L32U32B (Version IX and XII) Position T08-09



BSA-3107



	ER11
---	------

	1:1
---	-----

RPM max.	5'000
----------	-------

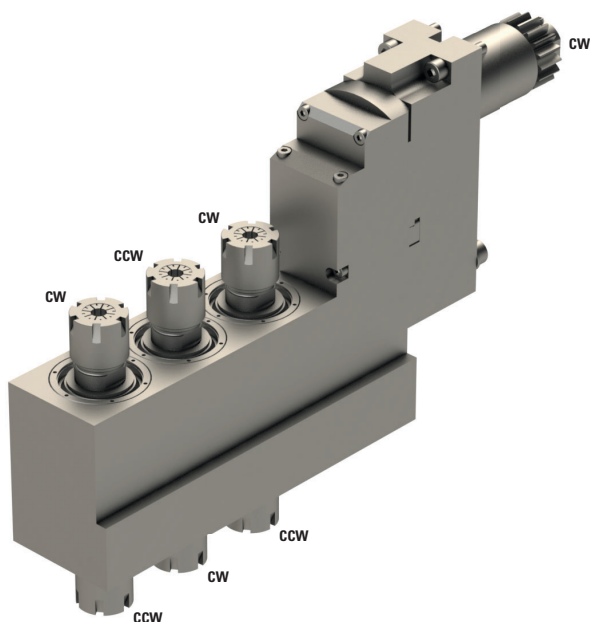
Machines Types	A232-VII
	A32-VII
	A320-VII


Note :

Adjustable 0°-180°
 Crash with U150B / U151B by working with tool position
 T11 and T12



BSA-2010



	3xER16+ 3xER16
---	----------------

	1:1
---	-----

RPM max.	5'000
----------	-------

Machines Types

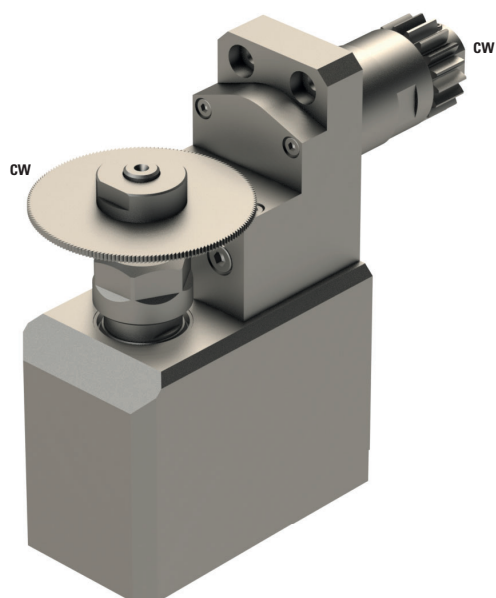
A20-3F7N	M220-III
A232-VII	M220-V
A32-VII	M232-III
A320-VII	M232-V
L20E-2M8	M320-III
L20E-2M10	M320-V
L20E-2M12	M332-III
L32-1M8	M332-V
L32-1M10	M32-4M5
L32-1M12	M32-4M8


Note :

Adjustable 0°-21°
 By using angle adjustment, T10 is covered by this tool.



BSS-1530



	ER16
---	------

	5:3
---	-----

RPM max.	8'333
----------	-------

Machines Types

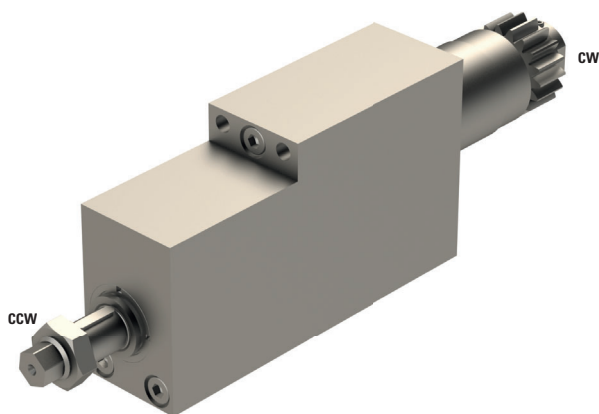
A232-VII
A32-VII
L32-1M8
L32-M10
L32-M12

Note :

Position T31-34
Max. tool Ø80 mm
Max. cutter thickness 3 mm



GSC-1335-DEC



Ø	13
---	----

	1:1
---	-----

RPM max.	6'000
----------	-------

Machines Types

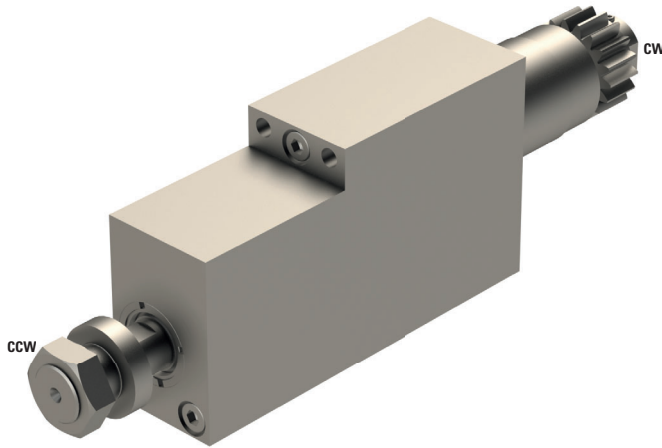
L20E-2M8
L20E-2M10
L20E-2M12
L32-1M8
L32-1M10
L32-1M12


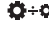
Note :

Position T08-T10
Max. tool Ø58 mm
Max. cutter thickness 15 mm



GSC-1307-DEC



	Ø16
	1:1
RPM max.	6'000

Machines Types

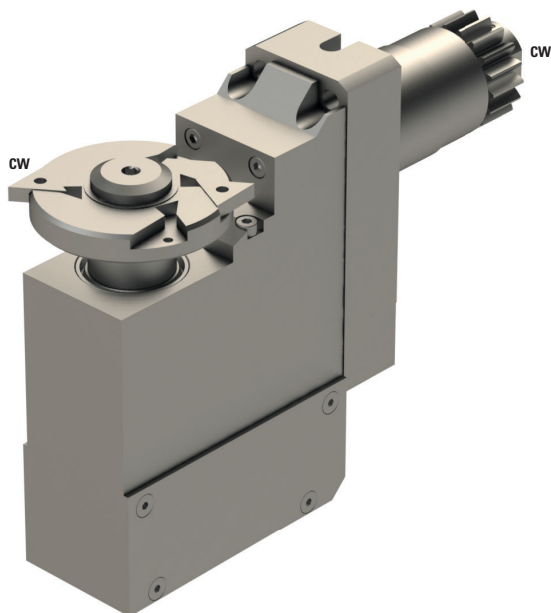
A232-VII	M220-V
A32-VII	M232-III
A320-VII	M232-V
L20E-2M8	M320-III
L20E-2M10	M320-V
L20E-2M12	M332-III
L32-1M8	M332-V
L32-1M10	M32-4M5
L32-1M12	M32-4M8
M220-III	


Note :

Position T08-T10
Max. tool Ø63 mm
Max. cutter thickness 6 mm



BSP-510



 Ø13

 1:1

RPM max. 5'000

Machines Types

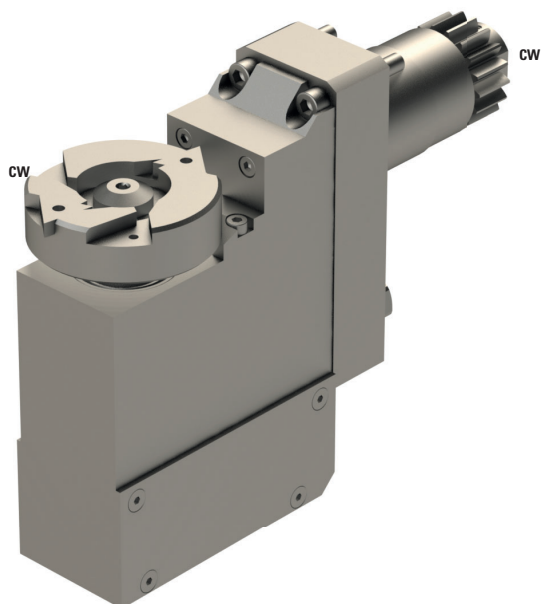
A232-VII	M232-III
A32-VII	M232-V
A320-VII	M320-III
L32-1M8	M320-V
L32-1M10	M332-III
L32-1M12	M332-V
M220-III	M32-4M5
M220-V	M32-4M8


Note :

Position T10
Max. tool Ø 60 mm



BSP-511



 Ø10

 1:1

RPM max. 5'000

Machines Types

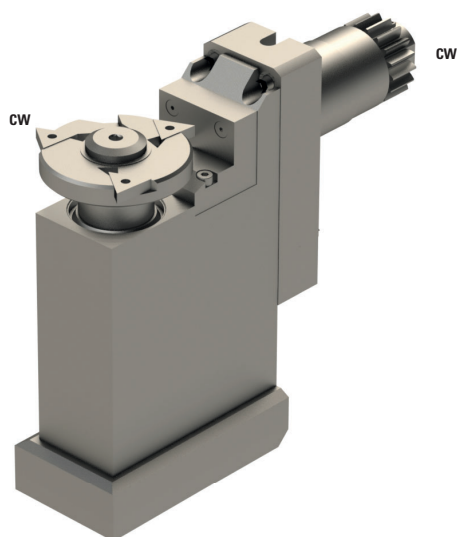
A232-VII	M232-III
A32-VII	M232-V
A320-VII	M320-III
L32-1M8	M320-V
L32-1M10	M332-III
L32-1M12	M332-V
M220-III	M32-4M5
M220-V	M32-4M8


Note :

Position T10
Max. tool Ø 55 mm



BSP-513



 Ø13

 1.5:1

RPM max. 8'000

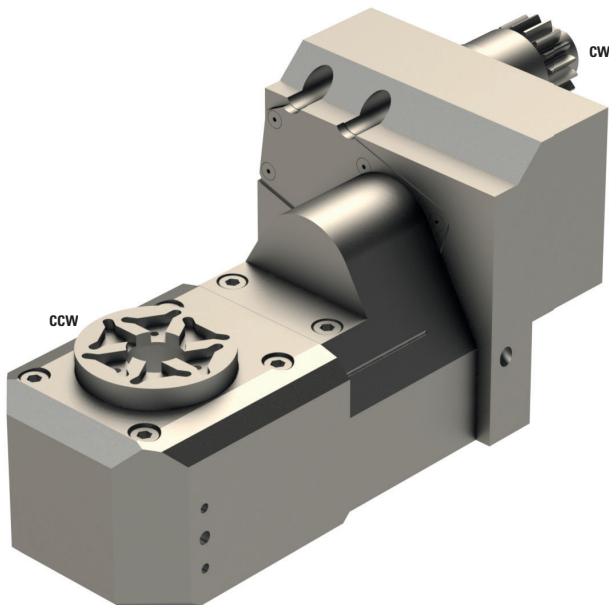
Machines Types
A20-VII
A20-3F7N
A32
L220
L32



Note :

Position T09
Max. tool Ø70 mm
Max. thickness 8.3 mm



BSW-315



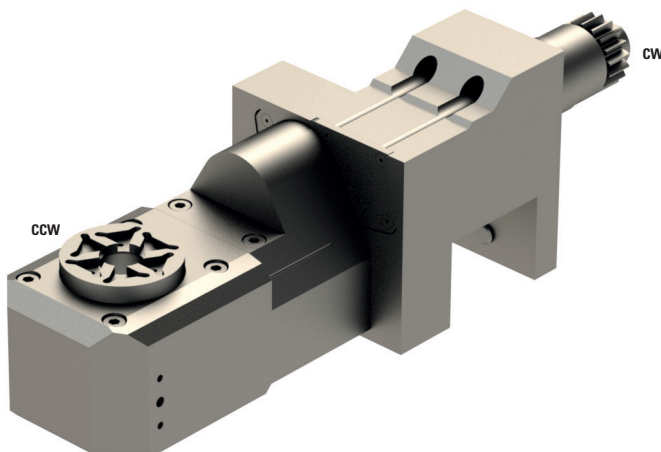
	-
	1:1
RPM max.	5'000
Machines Types	A232-VII A32-VII A320-VII



Note :

Position T10
Adjustable $\pm 15^\circ$
Dismounting the GDF9101
Schwanog cutter head SWG-197591, Z=6, $\varnothing 12$ mm
Gloor cutter head 501-0001, Z=6, $\varnothing 11$ mm
Utilis cutter head 137578, Z=9, $\varnothing 12$ mm or
139055, Z=12, $\varnothing 12$ mm



BSW-315-II



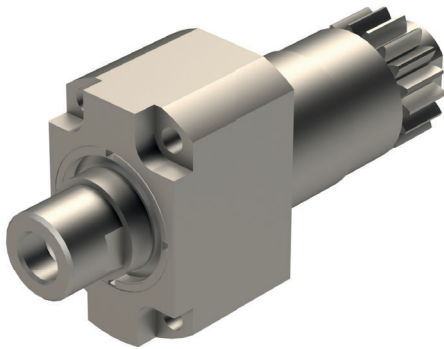
	-
	1:1
RPM max.	5'000
Machines Types	A232-VII A32-VII A320-VII


Note :

Position T10
Adjustable $\pm 15^\circ$
Center from the cutter on 186 mm
Schwanog cutter head SWG-197591, Z=6, $\varnothing 12$ mm
Gloor cutter head 501-0001, Z=6, $\varnothing 11$ mm
Utilis cutter head 137578, Z=9, $\varnothing 12$ mm or
139055, Z=12, $\varnothing 12$ mm



GSC-1110-F



	M10
---	-----

	1:1
---	-----

RPM max.	8'000
-----------------	-------

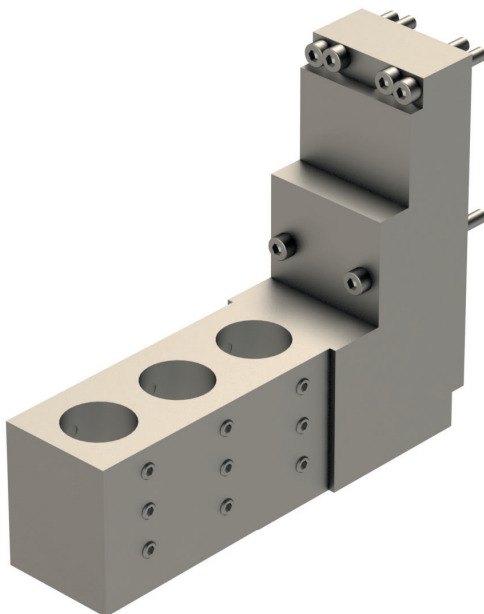
Machines Types	A20-3F7N	M220-III
	A232-VII	M220-V
	A32-VII	M232-III
	A320-VII	M232-V
	L20E-2M8	M320-III
	L20E-2M10	M320-V
	L20E-2M12	M332-III
	L32-1M8	M332-V
	L32-1M10	M32-4M5
	L32-1M12	M32-4M8

Note :

Position T06-T08 according to the machine
 This tool holder is for a mill tool SECO Combimaster with M10 attachment



GDF-1501-II



\emptyset	3x25.4
-------------	--------

	-
---	---

RPM max.	-
-----------------	---

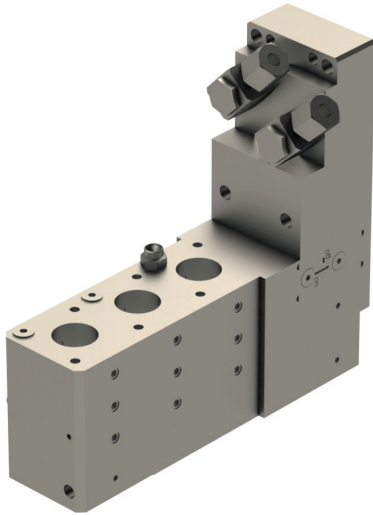
Machines Types	A20-3F7N	M220-III
	A232-VII	M220-V
	A32-VII	M232-III
	A320-VII	M232-V
	L20E-2M8	M320-III
	L20E-2M10	M320-V
	L20E-2M12	M332-III
	L32-1M8	M332-V
	L32-1M10	M32-4M5
	L32-1M12	M32-4M8

Note :

Position T06-T09



GDF1502-IK



Ø 3x19.05

⚙️ -

RPM max. -

Machines Types

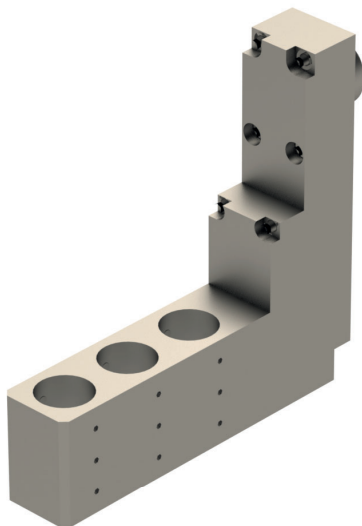
A232-VII	M320-III
A32-VII	M320-V
A320-VII	M332-III
M220-III	M332-V
M220-V	M32-4M5
M232-III	M32-4M8
M232-V	

Note :

Positions
 U34B, T10
 U152B, T34-T37
 U30B, T10
 Max pressure interne 200 Bar
 Max pressure externe 100 Bar
 For Ø6 coolant tube



GDF1601-L



Ø 3x5.4

⚙️ -

RPM max. -

Machines Types

L32-VIII
L32-IX
L32-X
L32-XII

Note :

Position T10
 U30B and U32B

