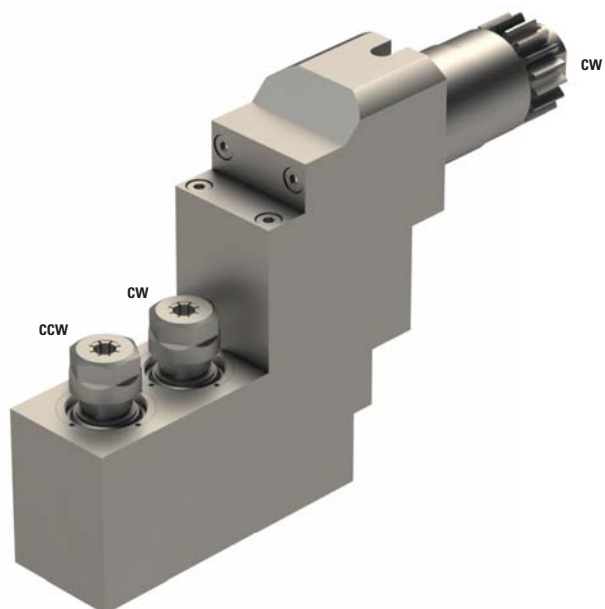




BSE-207

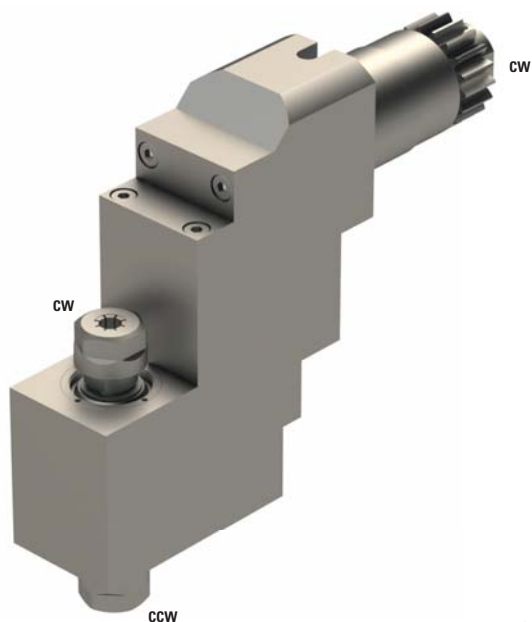




	2xER11
	1:1
RPM max.	8'000
Machines Types	A20-VII A20-3F7N
Note :	

Position T09



BSE-1007

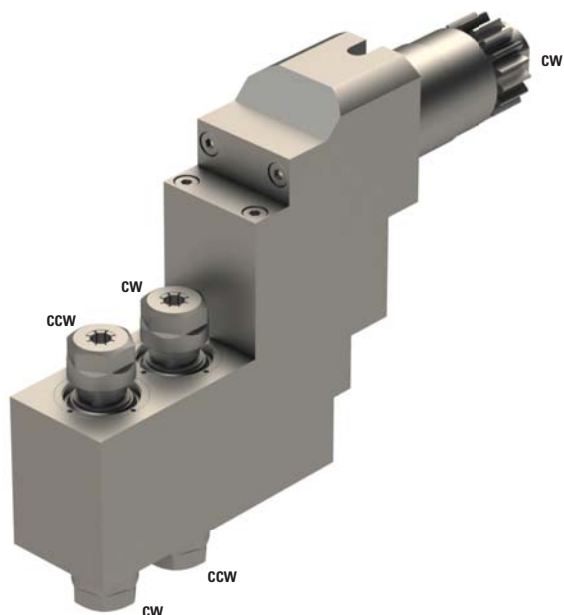




	1xER11+1xER11
	1:1
RPM max.	8'000
Machines Types	A20-VII A20-3F7N
Note :	

Position T09



BSE-2007

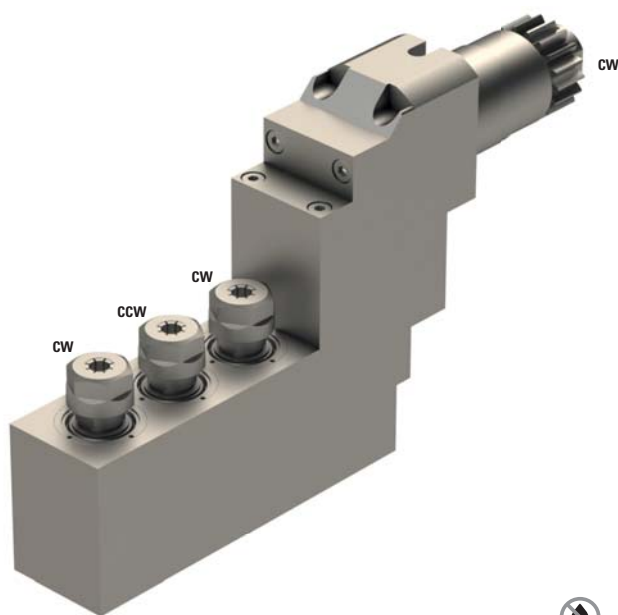



	2xER11+2xER11
	1:1
RPM max.	8'000
Machines Types	A20-VII A20-3F7N
Note :	

Position T09



BSE-3107

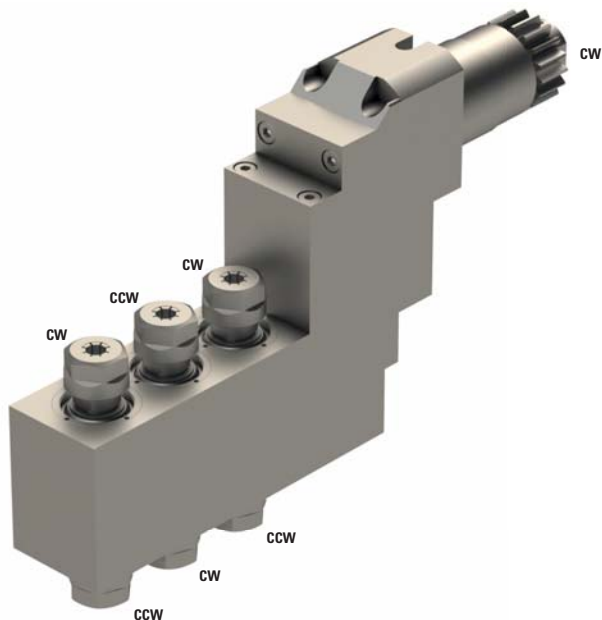



	3xER11
	1:1
RPM max.	8'000
Machines Types	A20-VII A20-3F7N
Note :	

Position T09



BSE-3206



 3xER11+3xER11

 1:1

RPM max. 8'000

Machines Types A20-VII
A20-3F7N


Note :

Position T09



MSC-507-L



 ER11

 1:1

RPM max. 10'000

Machines Types

A20-3F7N	M212-V
A320-VII	M216-C
L12-1M7	M216-V
L20E-2M12	M312-III
L20E-2M10	M312-V
L20E-2M8	M312-VII
L20E-IX	M316-III
L20X	M316-V
M212-C	M16-4M5
	M16-4M8


Note :


Position T08-T10 or T31-T34



MSC-507-II



	ER11
---	------

	1:1
---	-----

RPM max.	8'000
-----------------	-------

Machines Types

A20-VII	M320-V
A20-3F7N	M332-III
A320-VII	M332-V
L12-1M7	M32-4M5
L20E-2M12	M32-4M8
L20E-2M10	M212-C
L20E-2M8	M212-V
L20E-IX	M216-C
L20X	M216-V
L32-1M12	M312-III
L32-1M10	M312-V
L32-1M8	M312-VII
M220-III	M316-III
M220-V	M316-V
M232-III	M16-4M5
M232-V	M16-4M8
M320-III	


Note :

Position T06-T10 or T31-T34 or T21-T23 according to the machine



MSC-513



	ER20
---	------

	1:1
---	-----

RPM max.	10'000
-----------------	--------

Machines Types

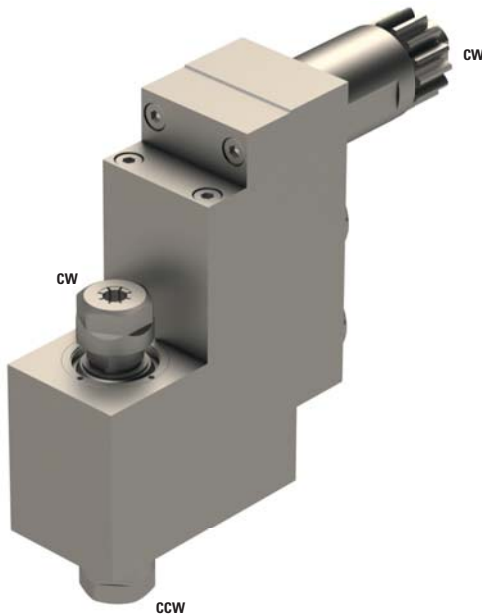
A20-3F7N	M212-V
A320-VII	M216-C
L12-1M7	M216-V
L20E-2M12	M312-III
L20E-2M10	M312-V
L20E-2M8	M312-VII
L20E-IX	M316-III
L20X	M316-V
M212-C	M16-4M5
	M16-4M8


Note :

Position T34
Position T08-T10 with tool holder MSC-507-II on his side.



MSE-1007



	1xER11+1xER11
---	---------------

	1:1
---	-----

RPM max.	9'000
-----------------	-------

Machines Types	A20-VII
	A20-3F7N
	L12-1M7


Note :

Position T31-T34
 Need 3 positions



BSC-210



	ER16
---	------

	1:1
---	-----

RPM max.	8'000
-----------------	-------

Machines Types	A20-3F7N	M220-III
	A232-VII	M220-V
	A32-VII	M232-III
	A320-VII	M232-V
	L20E-2M8	M320-III
	L20E-2M10	M320-V
	L20E-2M12	M332-III
	L32-1M8	M332-V
	L32-1M10	M32-4M5
	L32-1M12	M32-4M8


Note :

Position T06-T10 according to the machine



GSC-1110



	ER16
---	------

	1:1
---	-----

RPM max.	8'000
-----------------	-------

Machines Types	A20-3F7N	M220-III
	A232-VII	M220-V
	A32-VII	M232-III
	A320-VII	M232-V
	L20E-2M8	M320-III
	L20E-2M10	M320-V
	L20E-2M12	M332-III
	L32-1M8	M332-V
	L32-1M10	M32-4M5
	L32-1M12	M32-4M8


Note :

Position T06-T10 according to the machine



GSC-1110-4X



 ER08

 1:3.8

RPM max. 30'400

Machines Types

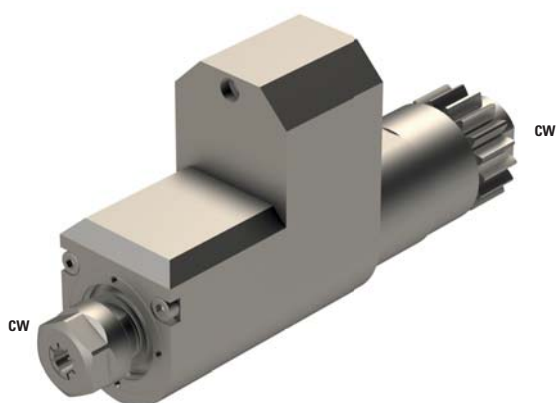
A20-3F7N	M220-V
A232-VII	M232-III
A32-VII	M232-V
L20E-2M8	M320-III
L20E-2M10	M320-V
L20E-2M12	M332-III
L32-1M8	M332-V
L32-1M10	M32-4M5
L32-1M12	M32-4M8
M220-III	


Note :

Position T06-T08 according to the machine



BSC-510-3X-L



 ER11

 1:3

RPM max. 24'000

Machines Types

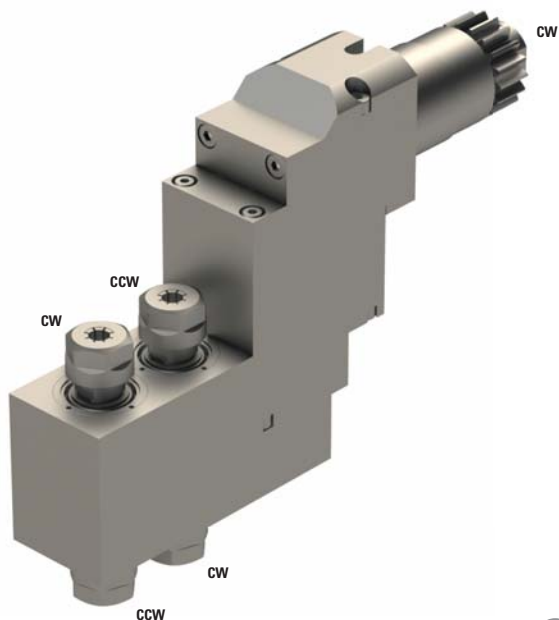
A20-VII
A20-3F7N


Note :

Position T09



BSE-2007-2X



 2xER11+2xER11

 1:2

RPM max. 16'000

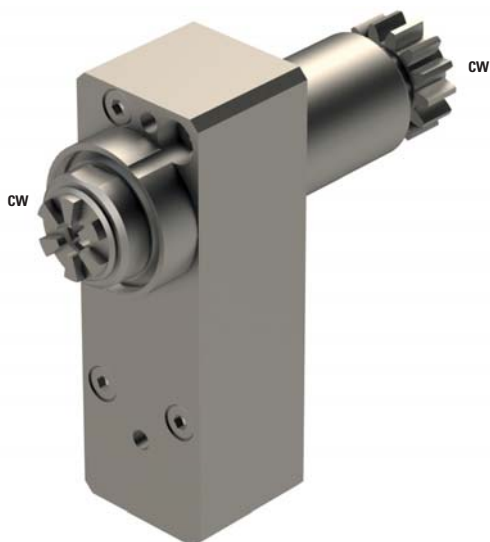
Machines Types A20-VII
A20-3F7N


Note :

Position T09



GSE-3507-3X



 ER11

 1:3

RPM max. 27'000

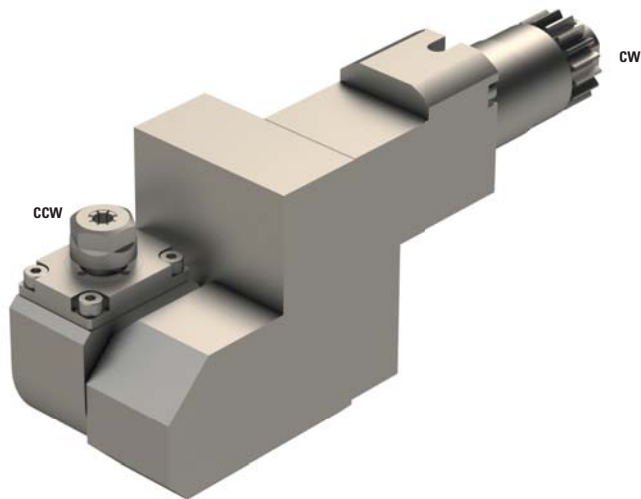
Machines Types A20-3F7N
A20-VII
A320-VII
L12-1M7
L20E-2M8
L20E-2M10
L20E-2M12
L20E-IX
L20X
L32-1M8
L32-1M10
L32-1M12

Note :

Position T31-T34



BSA-107

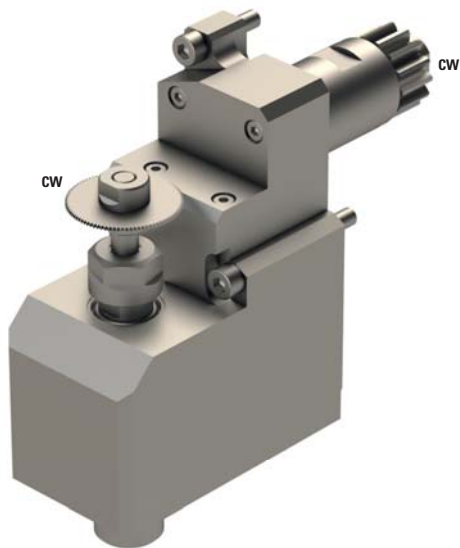


	ER11
	1:1
RPM max.	8'000
Machines Types	A20-VII A20-3F7N
Note :	

Position T09
Adjustable 0°-180°
Crash with U150B by working with tool position T11 and T12



GSS-1530



ER11



5:3

RPM max.

5'400

Machines Types

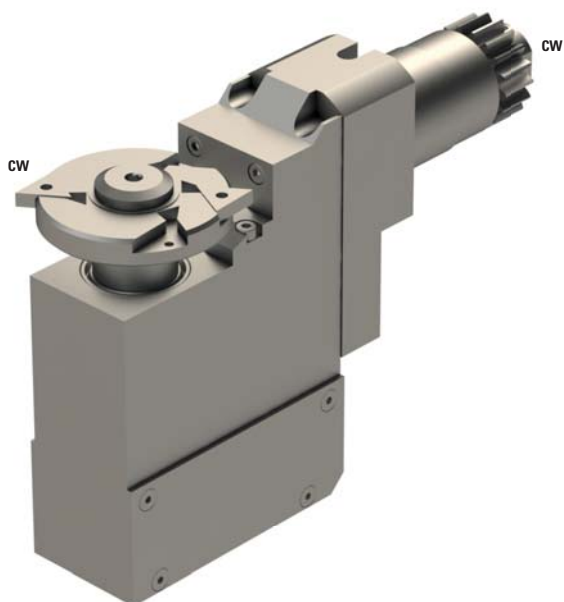
A20-3F7N
 L12-1M7
 L20E-2M8
 L20E-2M10
 L20E-2M12
 L20E-IX
 L20X



Note :

Position T34
 Max. tool \varnothing 63 mm
 Max. cutter thickness 2 mm



BSP-509

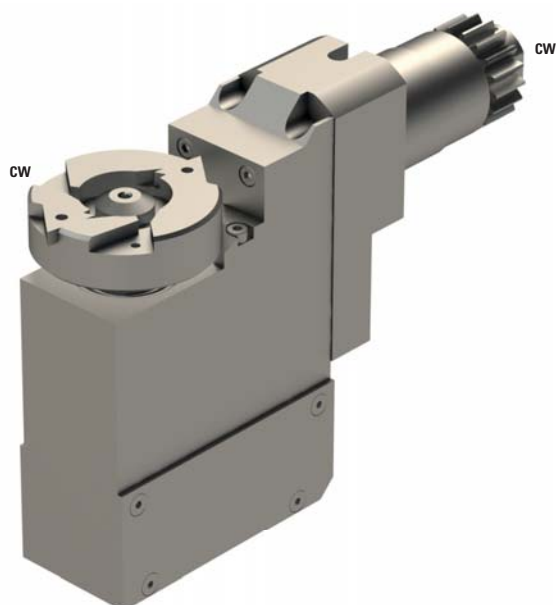


	Ø13
	1:1
RPM max.	8'000
Machines Types	A20-VII A20-3F7N
Note :	

Position T09
 Max. tool Ø60 mm



BSP-512

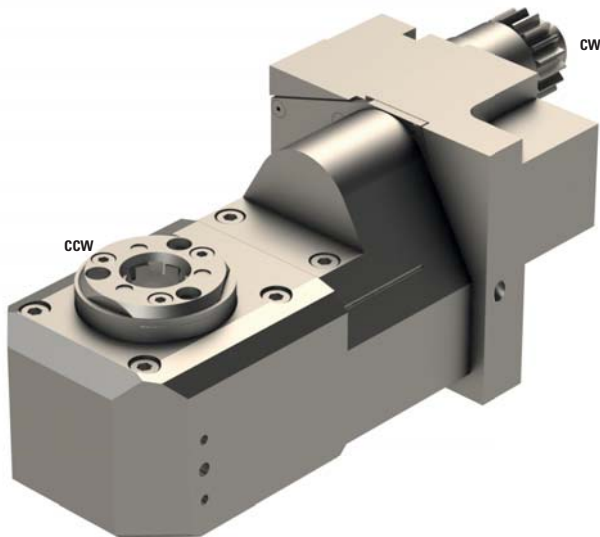


	Ø10
	1:1
RPM max.	8'000
Machines Types	A20-VII A20-3F7N
Note :	

Position T09
 Max. tool Ø55 mm



BSW-215

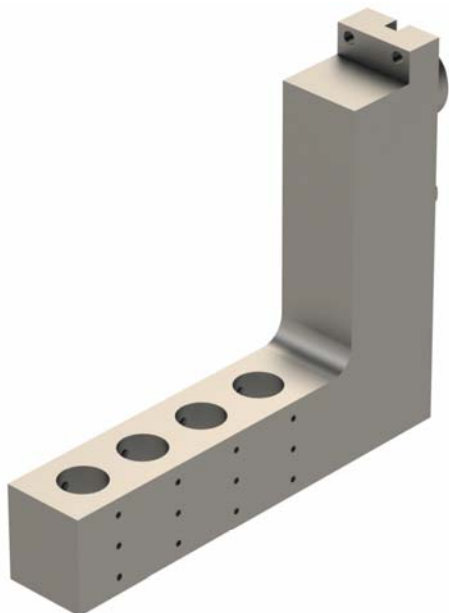


	-
	1:1
RPM max.	8'000
Machines Types	A20-VII A20-3F7N
Note :	

Position T09
Adjustable $\pm 15^\circ$
The vertical drill holder must be removed from the machine
Schwanog cutter head SWG-197591, Z=6, $\varnothing 12$ mm
Gloor cutter head 501-0001, Z=6, $\varnothing 11$ mm
Utilis cutter head 137578, Z=9, $\varnothing 12$ mm or
139055, Z=12, $\varnothing 12$ mm



GDF-1207-L



Ø 4x19.05

⚙️ -

RPM max. -

Machines Types

A20-3F7N
L20E-2M10
L20E-2M12
L20E-2M8
L32-1M10
L32-1M12
L32-1M8

Note :

Position T09



GSC1310-HP



≡ ER16

⚙️ 1:1

RPM max. 8'000

Machines Types

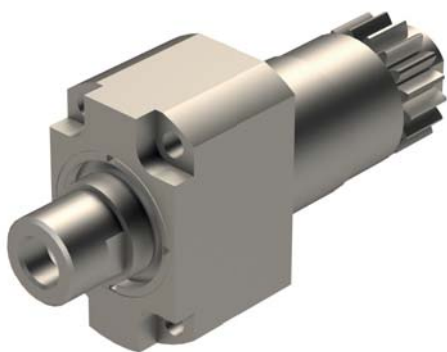
A20-3F7N	M220-III
A232-VII	M220-V
A32-VII	M232-III
A320-VII	M232-V
L20E-2M8	M320-III
L20E-2M10	M320-V
L20E-2M12	M332-III
L32-1M8	M332-V
L32-1M10	M32-4M5
L32-1M12	M32-4M8


Note :

Position T06-T08 according to the machine
 Maximum pressure 137 Bar



GSC-1110-F



	M10
---	-----

	1:1
---	-----

RPM max.	8'000
-----------------	-------

Machines Types	A20-3F7N	M220-III
	A232-VII	M220-V
	A32-VII	M232-III
	A320-VII	M232-V
	L20E-2M8	M320-III
	L20E-2M10	M320-V
	L20E-2M12	M332-III
	L32-1M8	M332-V
	L32-1M10	M32-4M5
	L32-1M12	M32-4M8

Note :

Position T06-T08 according to the machine
 This tool holder is for a mill tool SECO Combimaster with
 M10 attachment

