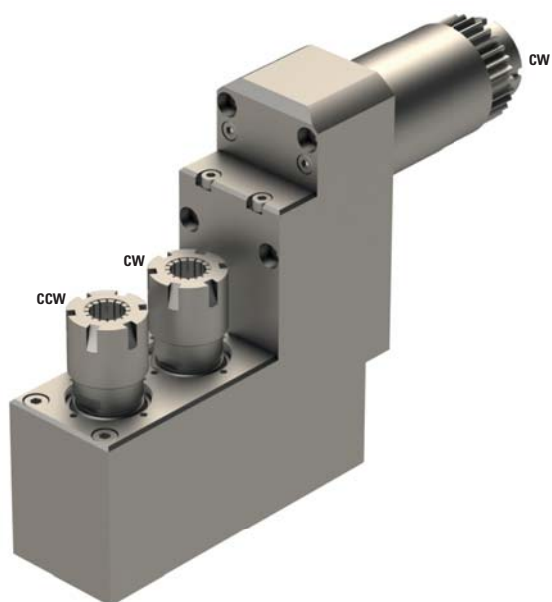




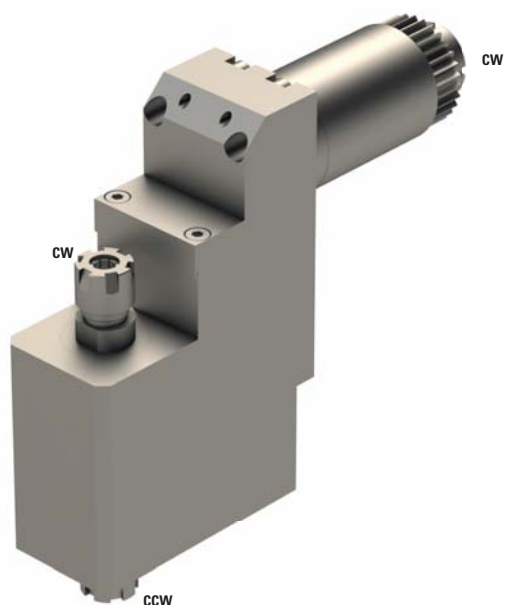
## E20-GSE-210





	2xER16
	1:1
<b>RPM max.</b>	8'000
<b>Machines Types</b>	ECAS-12 ECAS-20 SR-20J SR-20JN SR-20RIII SR-20RII SR-20RIV SW-20
<b>Note :</b>	



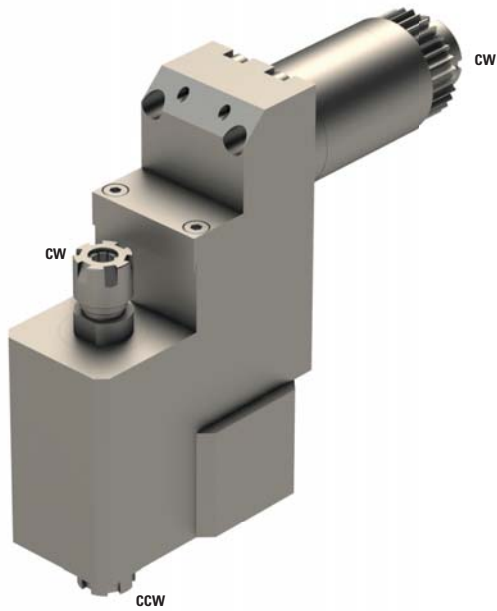
## E20-DE-1111




	2xER11
	1:1
<b>RPM max.</b>	6'000
<b>Machines Types</b>	ECAS-12 ECAS-20 SR-20J SR-20JN SR-20RIII SR-20RII SR-20RIV SW-20 SB-12 SB-20R
<b>Note :</b>	



## E20-DS-2222



	2xER11
---	--------

	1:2
---	-----

<b>RPM max.</b>	5'000
-----------------	-------

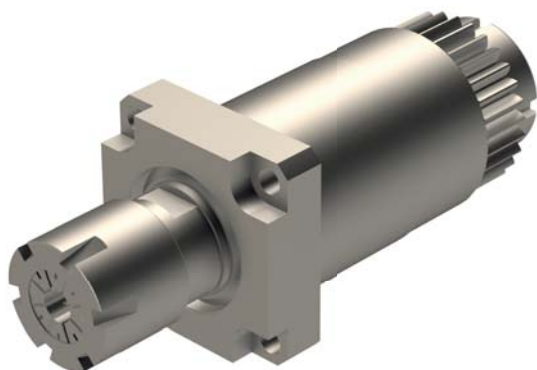
### Machines Types


ECAS-12  
 ECAS-20  
 SR-20J  
 SR-20JN  
 SR-20RIII  
 SR-20RII  
 SR-20RIV  
 SW-20  
 SB-12  
 SB-20R

**Note :**



## E20-GSC-110



 ER16

 1:1

**RPM max.** 8'000

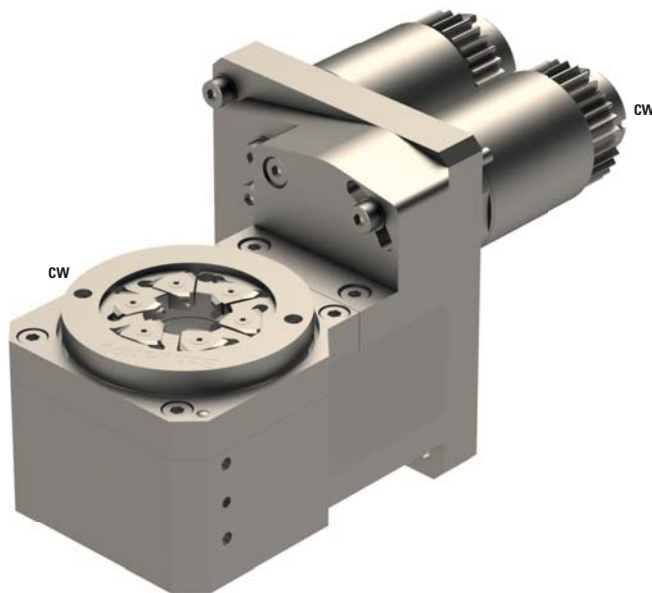
**Machines Types**



ECAS-12  
ECAS-20  
SR-20J  
SR-20JN  
SR-20RIII  
SR-20RII  
SR-20RIV  
SR-32J  
SR-32JN  
SV-12  
SV-20  
SV-32  
SV-32JII  
SW-20

**Note :**



## E20-W20



	-
	1:1
<b>RPM max.</b>	8'000

### Machines Types

ECAS-12  
 ECAS-20  
 SR-20J  
 SR-20JN  
 SR-20RIII  
 SR-20RII  
 SR-32J  
 SR-32JN  
 SW-20



### Note :

Adjustable  $\pm 20^\circ$   
 Need 2 positions  
 SCHWANOG 218135, Z=5,  $\varnothing 6\text{mm}$   
 GLOOR 501-0003, Z=5,  $\varnothing 6\text{mm}$



## SR20J-W20



	-
	1:1
<b>RPM max.</b>	8'000

### Machines Types

ECAS-12  
 ECAS-20  
 SR-20J  
 SR-20JN  
 SR-20RIII  
 SR-20RII  
 SR-32J  
 SR-32JN  
 SW-20

### Note :

Use 2 Locations  
 Adjustable  $\pm 20^\circ$   
 SCHWANOG 191884, Z=6,  $\varnothing 12\text{mm}$



## E20C-901-AR



∅ 3x32

⚙️+⚙️ -

RPM max. -

**Machines Types**  
ECAS-12  
ECAS-20  
SR-20J  
SR-20JN  
SR-20RIII  
SR-20RII  
SR-20RIV  
SW-20

**Note :**

