

PCM

SWISS



PRECISION TOOLING

PORTE-OUTILS
WERKZEUGHALTER
TOOL HOLDERS
PORTAUTENSILI

CITIZEN A20-VII

www.pcm.ch

www.pcm.ch

PCM WILLEN S.A.
Z. Industrielle C,
Rte. Du Grammont 101
CH-1844 Villeneuve

Tel: +41(0)21 967 33 66
Fax: +41(0)21 960 38 95
E-Mail: office@pcm.ch





PCM

SWISS



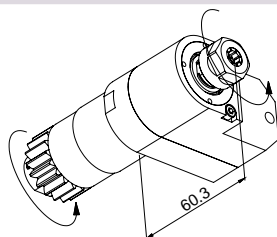
PRECISION TOOLING

CITIZEN A20-VII



BSC-510-3X

Axial / Axial / Axial / Assiale



Pince / Spannzange / Collet / Pinza ER11

Rapport / übersetzung
Ratio / Rapporto 1:3

RPM 8000 max

www.pcm.ch

PCM WILLEN S.A.
Z. Industrielle C,
Rte. Du Grammont 101
CH-1844 Villeneuve

Tel: +41(0)21 967 33 66
Fax: +41(0)21 960 38 95
E-Mail: office@pcm.ch



PCM

SWISS



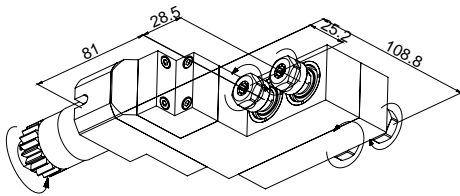
PRECISION TOOLING

CITIZEN A20-VII



BSE-2007

Radial / Radial / Radial / Radiale



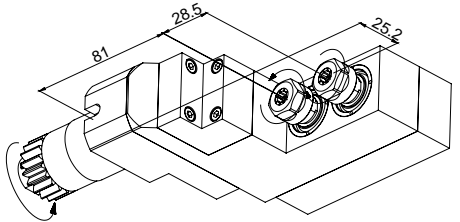
Pince / Spannzange / Collet / Pinza 4X ER11

Rapport / übersetzung
Ratio / Rapporto 1:1

RPM 8000 max

BSE-207

Radial / Radial / Radial / Radiale



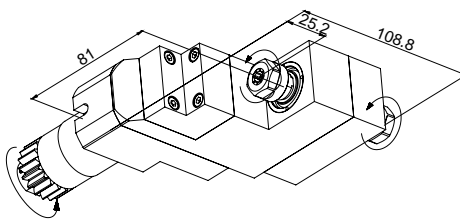
Pince / Spannzange / Collet / Pinza 2X ER11

Rapport / übersetzung
Ratio / Rapporto 1:1

RPM 8000 max

BSE-1007

Radial / Radial / Radial / Radiale



Pince / Spannzange / Collet / Pinza 2X ER11

Rapport / übersetzung
Ratio / Rapporto 1:1

RPM 8000 max

www.pcm.ch



PCM

SWISS



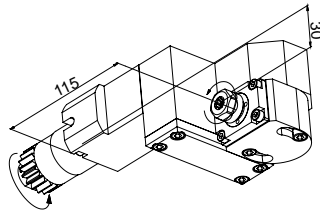
PRECISION TOOLING

CITIZEN A20-VII



BSA-107

Inclinable / Schwenkbar / Adjustable / Assiale



0° - 180°

Pince / Spannzange / Collet / Pinza ER11

Rapport / übersetzung
Ratio / Rapporto 1:1

RPM 8000 max

www.pcm.ch

PCM WILLEN S.A.
Z. Industrielle C,
Rte. Du Grammont 101
CH-1844 Villeneuve

Tel: +41(0)21 967 33 66
Fax: +41(0)21 960 38 95
E-Mail: office@pcm.ch



PCM

SWISS



PRECISION TOOLING

CITIZEN A20-VII

www.pcm.ch

Tel: +41(0)21 967 33 66
Fax: +41(0)21 960 38 95
E-Mail: office@pcm.ch

PCM WILLEN S.A.
Z. Industrielle C,
Rte. Du Grammont 101
CH-1844 Villeneuve



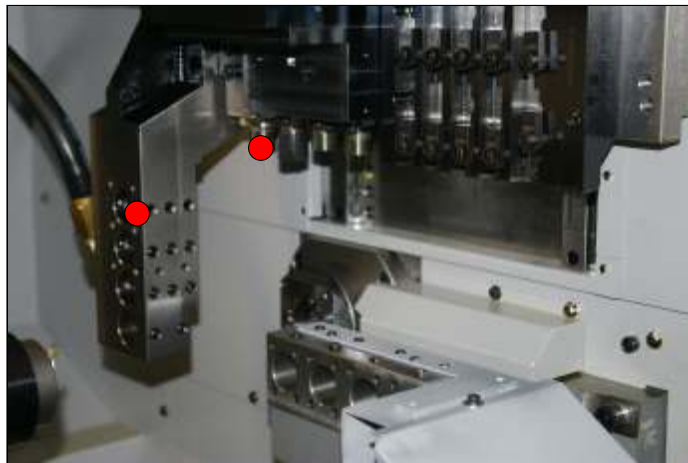
PCM

SWISS



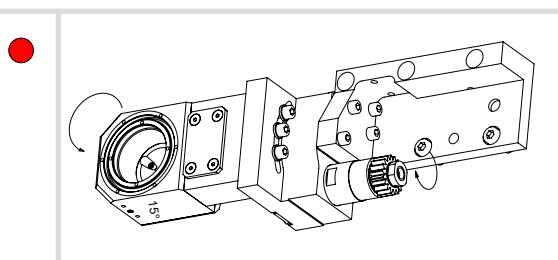
PRECISION TOOLING

CITIZEN A20-VII



BSW-215

Tourbillonneur / Gewindewirbeln / Thread whirling / Tourbillonneur



Attachment / Spannung
Attachement / Attrezzatura

Schwanog

Rapport / übersetzung
Ratio / Rapporto

1:1

RPM

8000 max

www.pcm.ch

PCM WILLEN S.A.
Z. Industrielle C,
Rte. Du Grammont 101
CH-1844 Villeneuve

Tel: +41(0)21 967 33 66
Fax: +41(0)21 960 38 95
E-Mail: office@pcm.ch



PCM

SWISS

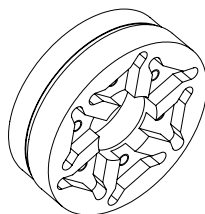


PRECISION TOOLING

CITIZEN A20-VII

SWG-197591

Attachment / Spannung / Attachement / Attrezzatura



Schwanog

Plaquettes / Platten
Insert / Inerti

6

RPM

6000 max

www.pcm.ch

Tel: +41(0)21 967 33 66
Fax: +41(0)21 960 38 95
E-Mail: office@pcm.ch

PCM WILLEN S.A.
Z. Industrielle C,
Rte. Du Grammont 101
CH-1844 Villeneuve



ESPRIT D'EQUIPE

MAKE THE DIFFERENCE



PCM WILLEN S.A.
Z. Industrielle C,
Rte. Du Grammont 101
CH-1844 Villeneuve
Tel: +41(0)21 967 33 66
Fax: +41(0)21 960 38 95
E-Mail: office@pcm.ch

www.pcm.ch

