



## Accessories

# 12

### ER SYSTEM

- 12.1 **Spanners**
- 12.3 **Wrench Heads**
- 12.4 **Torque Wrenches**
- 12.5 **ZWT Trays for Collet Sets**
- 12.6 **DSR Trays for Sealing Disk Sets**

### powRgrip SYSTEM

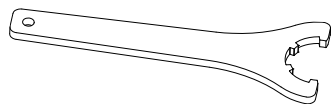
- 12.8 **Clamping Units PGU/PGC**

### Other Accessories

- 12.9 **WMB Tool Holding Fixture**
- 12.9 **FWR Balancing Rings**
- 12.10 **KSR Coolant Tubes**



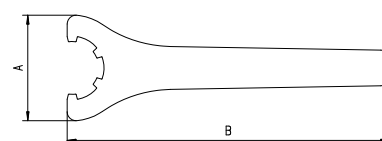
Swiss  
Precision  
Tools



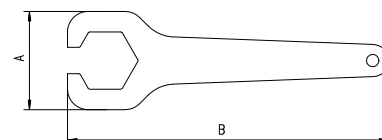
# Spanners

## Type E | Type E P | Type E M

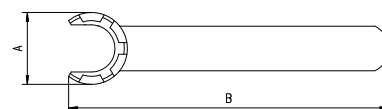
Type	Part No.	Size	A [mm]	B [mm]	For Hi-Q / ER	For Hi-Q / ERC	For Hi-Q / ERB	For Hi-Q / ERBC	For Hi-Q / ERM	For Hi-Q / ERMC	For ER MS	For ER AX	For ER AX C
E 16	7111.16000	ER 16	50	160									
E 20	7111.20000	ER 20	55	180									
E 25	7111.25000	ER 25	65	210	■	■	■	■					
E 32	7111.32000	ER 32	75	250	■	■	■	■					
E 40	7111.40000	ER 40	90	290	■	■	■	■					
E 50	7111.50000	ER 50	110	350	■	■							
E 11 P	7112.11010	ER 11	32	95	■	■							
E 16 P	7112.16010	ER 16	44	145	■	■	■	■					
E 20 P	7112.20010	ER 20	52	170	■	■	■	■					
E 8 M	7113.08000	ER 8	12.4	74					■				
E 11 M	7113.11000	ER 11	16.8	95					■	■			
E 16 M	7113.16000	ER 16	22.5	117					■	■			
E 20 M	7113.20000	ER 20	29	129					■	■			
E 25 M	7113.25000	ER 25	36	141					■	■			



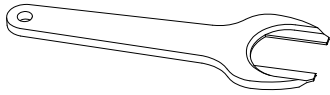
Type E



Type E P



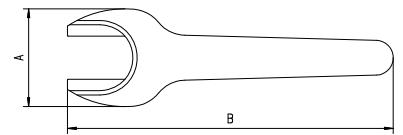
Type E M



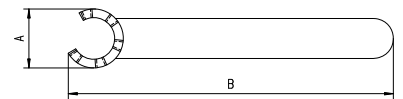
## Spanners

### Type E MS | Type E AX

Type	Part No.	Size	A [mm]	B [mm]	For Hi-Q / ER	For Hi-Q / ERC	For Hi-Q / ERB	For Hi-Q / ERBC	For Hi-Q / ERM	For Hi-Q / ERMC	For ER MS	For ER AX	For ER AXC
E 8 MS	7114.08000	ER 8	19.2	76							■		
E 11 MS	7114.11000	ER 11	22.0	100							■		
E 16 MS	7114.16000	ER 16	33.0	130							■		
E 20 MS	7114.20000	ER 20	42.0	140							■		

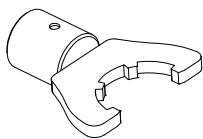


Type E MS



Type E AX

E 11 AX	7117.11000	ER 11	16.5	108								■	
E 16 AX	7117.16000	ER 16	22.5	131								■	■
E 20 AX	7117.20000	ER 20	26.0	148								■	■
E 25 AX	7117.25000	ER 25	29.5	162								■	■
E 32 AX	7117.32000	ER 32	37.5	196								■	■
E 40 AX	7117.40000	ER 40	47.5	220								■	■

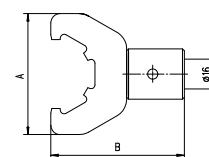


# Wrench Heads

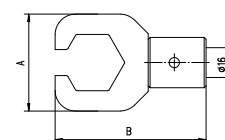
## Wrench Heads

Type A-E | A-E P | A-E M | A-E MS | A-E AX

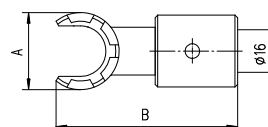
Type	Part No.	Size	A [mm]	B [mm]	For Hi-Q / ER	For Hi-Q / ERC	For Hi-Q / ERB	For Hi-Q / ERBC	For Hi-Q / ERM	For Hi-Q / ERMC	For ER MS	For ER AX	For ER AXC
A-E 16	7151.16000	ER 16	55	62									
A-E 20	7151.20000	ER 20	60	62									
A-E 25	7151.25000	ER 25	70	72	■	■	■	■					
A-E 32	7151.32000	ER 32	80	72	■	■	■	■					
A-E 40	7151.40000	ER 40	96	82	■	■	■	■					
A-E 50	7151.50000	ER 50	111	94	■		■	■					
A-E 11 P	7152.11010	ER 11	32	61	■	■							
A-E 16 P	7152.16010	ER 16	44	71	■	■	■	■					
A-E 20 P	7152.20010	ER 20	52	81	■	■		■					
A-E 8 M	7153.08000	ER 8	12.4	53.1					■				
A-E 11 M	7153.11000	ER 11	16.8	54.4					■	■			
A-E 16 M	7153.16000	ER 16	22.5	56.2					■	■			
A-E 20 M	7153.20000	ER 20	29	68.2					■	■			
A-E 25 M	7153.25000	ER 25	36	70					■	■			
A-E 8 MS	7114.08000	ER 8	19.2	51							■		
A-E 11 MS	7114.11000	ER 11	22	57							■		
A-E 16 MS	7114.16000	ER 16	33	60							■		
A-E 20 MS	7114.20000	ER 20	42	73							■		
A-E 11 AX	7157.11000	ER 11	16.5	62.1									■
A-E 16 AX	7157.16000	ER 16	22.5	63.5									■
A-E 20 AX	7157.20000	ER 20	26	64.8									■
A-E 25 AX	7157.25000	ER 25	29.5	93									■
A-E 32 AX	7157.32000	ER 32	37.5	95.8									■
A-E 40 AX	7157.40000	ER 40	47.5	99.4									■



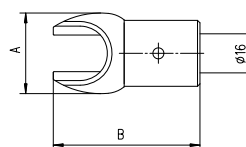
Type A-E



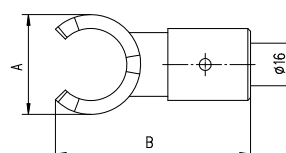
Type A-E P



Type A-E M



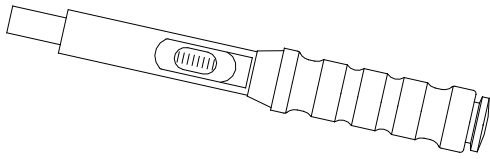
Type A-E MS



Type A-E AX

Recommended tightening torque on page 13.3/13.4.

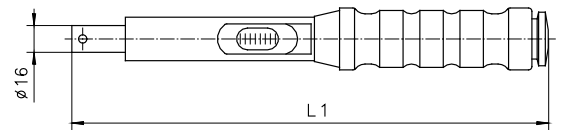
12



## Torque Wrenches

### Torque Wrenches TORCO-FIX

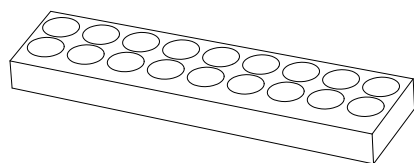
Type	Part No.	Range [Nm]	L1 [mm]
TORCO-FIX 0	7150.02025	2 - 25	290
TORCO-FIX I	7150.05050	5 - 50	335
TORCO-FIX II	7150.20200	20 - 200	465
TORCO-FIX III	7150.60300	60 - 300	565



Recommended tightening torque on page 13.3/13.4.



Swiss  
Precision  
Tools



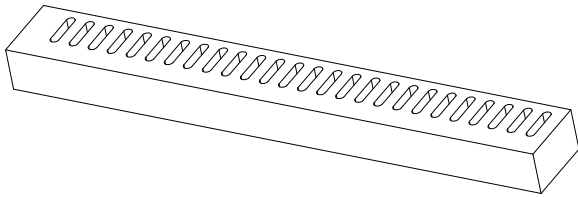
# ZWT | ER

### Trays for Collet Sets

Type	Part No.	For Number of Collets
ZWT / 8	7121.08000	9
ZWT / 11	7121.11000	13
ZWT / 16	7121.16000	10
ZWT / 20	7121.20000	12
ZWT / 25	7121.25000	15
ZWT / 32	7121.32000	18
ZWT / 40	7121.40000	23
ZWT / 50	7121.50000	12

### Storage Overview ZWT/ER

The REGO-FIX® trays are of finest quality and very solid.  
The collet bore diameters are marked on the tray.



## Trays for Sealing Disk Sets

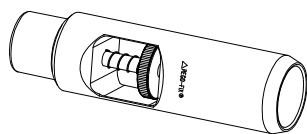
Type	Part No.	For Number of Sealing Disks
DSR / 16	7122.16000	14
DSR / 20	7122.20000	20
DSR / 25	7122.25000	26
DSR / 32	7122.32000	34
DSR / 40	7122.40000	46

### Storage Overview DSR/ER

The REGO-FIX® trays are of finest quality and very solid. The sealing disc bore diameters are marked on the tray.



## Matching Products



### Presetting Tool

Type	Part No.	Description
VEW 10	7619.10000	PG 10 Presetting tool for PG 10 colletholder
VEW 15	7619.15000	PG 15 Presetting tool for PG 15 colletholder
VEW 25	7619.25000	PG 25 Presetting tool for PG 25 colletholder
VEW 32	7619.32000	PG 32 Presetting tool for PG 32 colletholder

The powRgrip® presetting tool accepts the powRgrip® collets, and is inserted into the toolholder. The tool has a small thumb wheel for precise tool length adjustments, and allows maximum repeatability in the toolholder assembly.

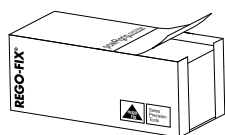


### Taper Cleaner

Type	Part No.	Description
TKCP 10	7657.10000	Taper cleaner for PG 10 colletholder
TKCP 15	7657.15000	Taper cleaner for PG 15 colletholder
TKCP 25	7657.25000	Taper cleaner for PG 25 colletholder
TKCP 32	7657.32000	Taper cleaner for PG 32 colletholder

Provides a quick and easy method of cleaning the powRgrip® holder bore of oil and debris before insertion of the tool.

Lieferumfang: Kegelreiniger inklusive 1 Set Reinigungspapiere CPS.



### Cleaning Paper Set

Type	Part No.	Description
CPS 10	7658.10000	Cleaning paper set for TKCP 10 / 250 papers
CPS 15	7658.15000	Cleaning paper set for TKCP 15 / 250 papers
CPS 25	7658.25000	Cleaning paper set for TKCP 25 / 250 papers
CPS 32	7658.32000	Cleaning paper set for TKCP 32 / 250 papers

A soft, absorbant paper specially prepared for cleaning the powRgrip® holder bore. The paper is lint-free and chemically neutral. For one time use only! Each pack contains 250 papers.

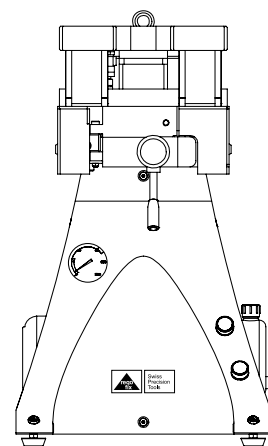
Demonstration of Application see:

[video.powRgrip.ch](http://video.powRgrip.ch)

PGU | PGC

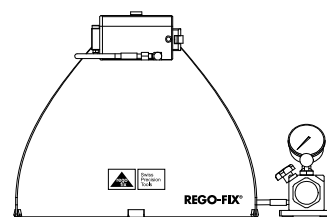
## PGU 9000 Automatic Clamping Unit

Type	Part No.	Description	Measurement W x D x H	Weight	Incl. Taper Cleaner
PGU 9000 E	7610.90000	powRgrip® Automatic clamping unit, 230 V	465 x 555 x 739 mm	90 kg	
PGU 9000 A	7610.90100	powRgrip® Automatic clamping unit 110 V	465 x 555 x 739 mm	90 kg	
PGU 9000 J	7610.90200	powRgrip® Automatic clamping unit 100 V	465 x 555 x 739 mm	90 kg	
APG 910	7611.10900	Clamping insert for PGU 9000 / PG 10	100 x 095 x 080 mm	3 kg	■
APG 915	7611.15900	Clamping insert for PGU 9000 / PG 15	100 x 095 x 080 mm	3 kg	■
APG 925	7611.25900	Clamping insert for PGU 9000 / PG 25	100 x 095 x 080 mm	3 kg	■
APG 932	7611.32900	Clamping insert for PGU 9000 / PG 32	100 x 095 x 080 mm	3 kg	■



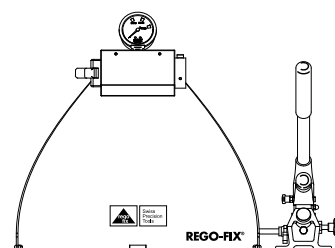
## PGC 1500 Manual Clamping Unit

Type	Part No.	Description	Measurement W x D x H	Weight	Incl. Taper Cleaner
PGC 1500	7621.15000	Manual clamping unit for PG 15	226 x 270 x 093 mm	12 kg	■
PGS 1	7625.00100	powRgrip® Compact Stand No. 1	450 x 492 x 280 mm	4 kg	
PGP 300 M	7629.00300	powRgrip® Hand pump, 300 bar	109 x 496 x 184 mm	6 kg	



## Set PGC 2510 Compact - Manual Clamping Unit

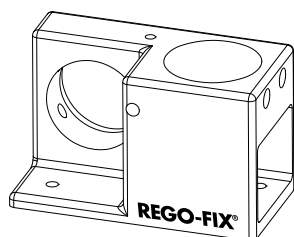
Type	Part No.	Description	Measurement B x T x H	Weight	Incl. Taper Cleaner
Set PGC 2510	7621.25109	powRgrip® Compact – manual clamping unit Supplied with: Unit, pump, stand.	578 x 420 x 438 mm	18.2 kg	■
APC 10	7622.10000	PG 10 Inserts for PGC 2510 for clamping unit	30 x 30 x 60 mm	0.85 kg	■
APC 15	7622.15000	PG 15 Inserts for PGC 2510 for clamping unit	30 x 30 x 60 mm	1.00 kg	■
APC 25	7622.25000	PG 25 Inserts for PGC 2510 for clamping unit	30 x 30 x 60 mm	1.10 kg	■



12



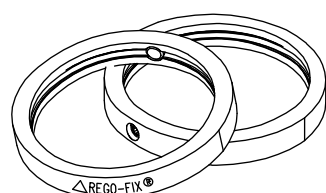
Swiss  
Precision  
Tools



## Tool Holding Fixture BT | CAT | TC

Type Steeptaper	Part No.	Fits These Tapers
WMB / SK 30	7811.30100	BT / CAT / TC
WMB / SK 40	7811.40100	BT / CAT / TC
WMB / SK 50	7811.50100	BT / CAT / TC

Supplied with: Tool holding fixture with 2 clamping sets and spanner.



## Hi-Q® Balancing Rings | Torque Screwdriver

Highly secured Hi-Q® Balancing Rings (pat. pend.).

Type	Part No.	d [mm]	D [mm]	L [mm]	Balancing-capacity [gmm]	maximal rpm
Set FWR 225	7490.22500	22.5	30.5	6.0	16	80 000
Set FWR 285	7490.28500	28.5	36.5	6.0	22	70 000
Set FWR 325	7490.32500	32.5	40.5	6.0	28	60 000
Set FWR 405	7490.40500	40.5	48.5	6.0	40	50 000
Set FWR 505	7490.50500	50.5	60.5	7.0	85	42 000

Supplied: 1 Set with 2 Hi-Q® Balancing Rings.

## Other Accessories

# WMB

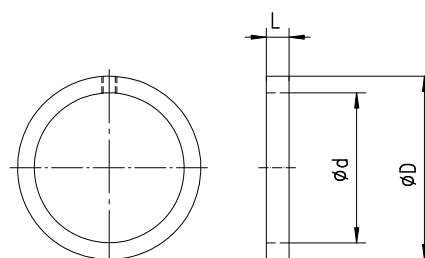
## Tool Holding Fixture HSK | REGO-FIX CAPTO

Type HSK	Part No.	Fits These Tapers
WMB / HSK 25	7811.25800	HSK 25
WMB / HSK 32	7811.32800	HSK 32
WMB / HSK 40	7811.40800	HSK 40 / REGO-FIX CAPTO C4
WMB / HSK 50	7811.50800	HSK 50 / REGO-FIX CAPTO C5
WMB / HSK 63	7811.63800	HSK 63 / REGO-FIX CAPTO C6
WMB / HSK 80 A+C*	7811.80800	HSK-A 80 / HSK-C 80
WMB / HSK 100 A+C*	7811.00300	HSK-A 100 / HSK-C 100

Supplied with: Tool holding fixture with 2 clamping sets and spanner.

\*Supplied with: Tool holding fixture with 2 inserts and clamping unit.

# FWR



Type	Part No.	Description
TSD 0.9 Nm	7159.09000	Torque screwdriver TORX 8 for balancing rings

The torque screwdriver is a special Torx style wrench that is preset to the recommended torque rating of 0.9 Nm for tightening the REGO-FIX Hi-Q® Balancing Rings.

Coolant Tubes | Spanners

For all HSK form A and HSK form E colletholders following coolant tubes (KSR) can be used:

Type	Part No.	For HSK-Type	G	D [mm]	L [mm]	L1 [mm]	Spanner Type	Spanner Part No.
KSR 25	7211.25000	HSK 25	M 8 x 1.0	5.00	4.5	17.0	SKR 25	7212.25000
KSR 32	7211.32000	HSK 32	M 10 x 1.0	6.00	5.5	25.7	SKR 32	7212.32000
KSR 40	7211.40000	HSK 40	M 12 x 1.0	8.00	7.5	29.2	SKR 40	7212.40000
KSR 50	7211.50000	HSK 50	M 16 x 1.0	10.00	9.5	32.7	SKR 50	7212.50000
KSR 63	7211.63000	HSK 63	M 18 x 1.0	12.00	11.5	36.2	SKR 63	7212.63000
KSR 80	7211.80000	HSK 80	M 20 x 1.5	14.00	13.5	39.7	SKR 80	7212.80000
KSR 100	7211.00000	HSK 100	M 24 x 1.5	16.00	15.5	43.6	SKR 100	7212.00000

