





Toolholders REGO-FIX CAPTO

Certified by SANDVIK

8

ISO 26623

ER *SYSTEM*

- 8.1 **Features | Benefits**
- 8.2 **Information**
- 8.4 **REGO-FIX CAPTO | ER**

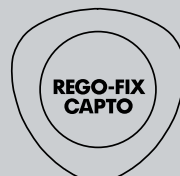
powRgrip *SYSTEM*

- 8.7 **Features | Benefits**
- 8.8 **Information**
- 8.10 **REGO-FIX CAPTO | PG**

Other Toolholders

- 8.11 **REGO-FIX CAPTO | End Mill Holders
WELDON**
- 8.12 **REGO-FIX CAPTO | Shell Mill Arbors**

REGO-FIX CAPTO Floating Chucks see page 11.4.



Certified by Sandvik



Swiss
Precision
Tools

ER

Toolholders

Features | Benefits



8

Swiss Quality

Made in Switzerland to ISO 9001/ISO 14001.

1 Marking

Type and part number.

2 Traceability

Lot number marking on all products for traceability through the entire manufacturing process.

3 Original REGO-FIX®

Our extensive experience results in a well-engineered system. Original only with the REGO-FIX® quality seal Δ . Guarantee for best quality.

T.I.R. <3 μ m

Inner diameter to outer diameter.

Surface Finish max. Ra 0.25

Higher clamping force and higher transferable torque.

Q+® Balancing

100% balanced to G 2.5 @ 25'000 min⁻¹.

Hi-Q® Balancing System

Ready to accept Hi-Q® balancing rings which allow to offset the imbalance introduced by the cutting tool up to 80'000 min⁻¹.

Hi-Q® Clamping Nut Included

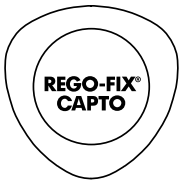
Guarantees highest clamping force and best balancing.

Vibration Dampening

For best machining results.

ID Chip Hole

Per DIN 69873 with 10 mm diameter.



Certified by Sandvik

Information

ISO 26623

REGO-FIX® CAPTO/ER Toolholder

Applications

These collets are designed for use on CNC-machining centers with automatic tool changer. Thanks to their precision and positive locking in the machine spindle CAPTO/ER collets are suitable for highest requirements.

Balancing

REGO-FIX® Q+® System CAPTO/ER collets are balanced by design to G 2.5 @ 25'000 min⁻¹. Type H collets are ready to accept Hi-Q® balancing rings which allow precision balancing of the system including cutting tool up to 80'000 min⁻¹ depending on the balancing rings used.

Special Applications

When extra high clamping force is needed, e.g. when tapping with ER-GB or ET1*, we recommend to use our friction bearing clamping nuts Hi-Q®/ERB and Hi-Q®/ERBC.

*Not for coolant through tools and not for applications with sealing disks.

Matched Tooling System for Best Fit

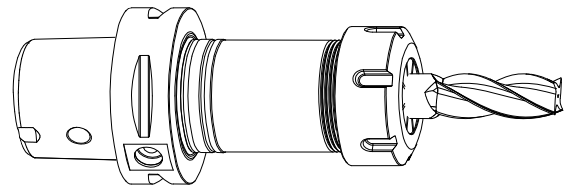
For highest precision and best results the whole system counts. Therefore REGO-FIX® components are carefully matched for optimum fit and accuracy. This guarantees the best run-out and balance.

For the influence of run-out on tool life see the graph page 2.3.



We recommend tightening the clamping nuts with a torque wrench. The maximum torque shall not be more than 25% above the recommended tightening torque.

Recommended tightening torque see page 13.3/13.4.





Swiss
Precision
Tools

ER
Toolholders

Matching Products

Clamping Nuts | Collets | Spanners

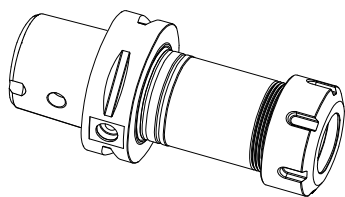
| Clamping Nut and Spanner | ER 11 | ER 16 | ER 20 | ER 25 | ER 32 | ER 40 | ER 50 | Page | Standard | With Friction Bearing | Balanced | For Coolant Through Tools | Collet Locking System | Mini-Nut | Nut with External Thread | Spanner |
|--------------------------|-------|------------|------------|------------|------------|-------|-------|------------|----------|-----------------------|----------|---------------------------|-----------------------|----------|--------------------------|---------|
| ER | - | 3416.00000 | 3420.00000 | 3425.00000 | 3432.00000 | - | - | 4.4 | ■ | ■ | ■ | | | | | |
| ERC | - | 3416.20000 | 3420.20000 | 3425.20000 | 3432.20000 | - | - | 4.6 4.8 | | | ■ | ■ | ■ | | | |
| ERB | - | 3416.30000 | 3420.30000 | 3425.30000 | 3432.30000 | - | - | 4.10 | | ■ | ■ | ■ | | | | |
| ERBC | - | 3416.40000 | 3420.40000 | 3425.40000 | 3432.40000 | - | - | 4.10 | | ■ | ■ | ■ | ■ | | | |
| EP | - | 7112.16010 | 7112.20010 | - | - | - | - | 12.1 | | | | | | | | ■ |
| E | - | - | - | 7111.25000 | 7111.32000 | - | - | 12.1 | | | | | | | | ■ |

Recommended tightening torque on page 13.3/13.4.

8

| Collet | ER 11/ET1-12 | | ER 16/ET1-16 | | ER 20/ET1-20 | | ER 25/ET1-25 | | ER 32/ET1-32 | | ER 40/ET1-40 | | ER 50 | |
|--------|---------------------|------|---------------------|------|---------------------|------|---------------------|------|---------------------|------|---------------------|------|---------------------|------|
| | Clamping Range [mm] | Page | Clamping Range [mm] | Page | Clamping Range [mm] | Page | Clamping Range [mm] | Page | Clamping Range [mm] | Page | Clamping Range [mm] | Page | Clamping Range [mm] | Page |
| ER | - | - | 0.5 – 10.0 | 2.10 | 0.5 – 13.0 | 2.12 | 0.5 – 16.0 | 2.14 | 1.0 – 20.0 | 2.16 | - | - | - | - |
| ER-UP | - | - | 0.5 – 10.0 | 2.10 | 0.5 – 13.0 | 2.12 | 0.5 – 16.0 | 2.14 | 1.0 – 20.0 | 2.16 | - | - | - | - |
| ER-DM | - | - | 3.0 – 10.0 | - | 3.0 – 10.0 | 2.24 | 6.0 – 16.0 | 2.26 | 6.0 – 20.0 | 2.28 | - | - | - | - |
| ER-MB | - | - | 0.2 – 0.9 | 2.10 | - | - | - | - | - | - | - | - | - | - |
| ER-GB | - | - | 4.0 – 9.0 | 3.4 | 4.0 – 11.2 | 3.4 | 4.0 – 16.0 | 3.4 | 4.0 – 20.0 | 3.4 | - | - | - | - |
| ET 1* | - | - | 1.4 – 6.3 | 3.8 | 2.2 – 7.0 | 3.8 | 2.5 – 10.0 | 3.8 | 4.5 – 12.5 | 3.8 | - | - | - | - |

*Not for coolant through tools and not for applications with sealing disks.



REGO-FIX CAPTO | ER

ISO 26623

ER Colletholders | Balancing Rings

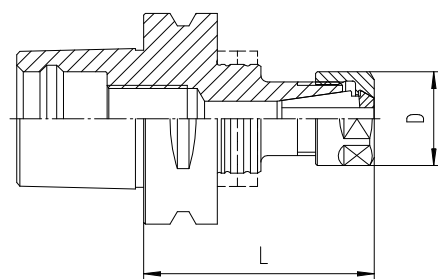
| Type | Part No. | D [mm] | L [mm] | Balancing Rings |
|-------------------|------------|--------|--------|-----------------|
| C3 / ER 16 x 045* | 2803.11610 | 28 | 45 | - |
| C3 / ER 20 x 045* | 2803.12010 | 34 | 45 | - |

| | | | | |
|-------------------|------------|----|----|---|
| C4 / ER 16 x 070* | 2804.11630 | 28 | 70 | - |
| C4 / ER 20 x 052* | 2804.12010 | 34 | 52 | - |
| C4 / ER 25 x 052* | 2804.12510 | 42 | 52 | - |
| C4 / ER 32 x 054* | 2804.13210 | 50 | 54 | - |

| | | | | |
|--------------------|------------|----|-----|---------|
| C5 / ER 16 x 070 H | 4805.11630 | 28 | 70 | FWR 285 |
| C5 / ER 16 x 100 H | 4805.11650 | 28 | 100 | FWR 285 |
| C5 / ER 20 x 055* | 2805.12010 | 34 | 55 | - |
| C5 / ER 20 x 100 H | 4805.12050 | 34 | 100 | FWR 325 |
| C5 / ER 25 x 055* | 2805.12510 | 42 | 55 | - |
| C5 / ER 25 x 100 H | 4805.12550 | 42 | 100 | FWR 405 |
| C5 / ER 32 x 057* | 2805.13210 | 50 | 57 | - |
| C5 / ER 32 x 070 H | 4805.13230 | 50 | 70 | FWR 405 |
| C5 / ER 32 x 100 H | 4805.13250 | 50 | 100 | FWR 405 |
| C6 / ER 11 x 150 H | 4806.11170 | 19 | 150 | FWR 325 |

Supplied with: ER colletholder with Hi-Q® clamping nut.

*Not for use with balancing rings.



| Hi-Q® Balancing Rings | Part No. | Page |
|--------------------------|------------|------|
| Set FWR 225 | 7490.22500 | 12.9 |
| Set FWR 285 | 7490.28500 | 12.9 |
| Set FWR 325 | 7490.32500 | 12.9 |
| Set FWR 405 | 7490.40500 | 12.9 |
| Set FWR 505 | 7490.50500 | 12.9 |
| Torque screwdriver (TSD) | 7159.09000 | 12.9 |

Maximum rpm for Hi-Q balancing rings see page 12.9.

Drawings with detailed dimensions see.

search.rego-fix.ch



Swiss
Precision
Tools

ER
Toolholders

Matching Products

Clamping Nuts | Collets | Spanners

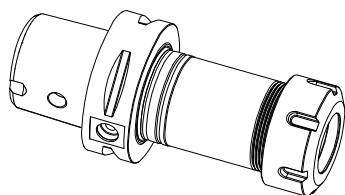
| Clamping Nut and Spanner | ER 11 | ER 16 | ER 20 | ER 25 | ER 32 | ER 40 | ER 50 | Page | Standard | With Friction Bearing | Balanced | For Coolant Through Tools | Collet Locking System | Mini-Nut | Nut with External Thread | Spanner |
|--------------------------|----------------------------|------------|------------|------------|------------|------------|------------|------------|----------|-----------------------|----------|---------------------------|-----------------------|----------|--------------------------|---------|
| Hi-Q/ER | 3411.00000 | 3416.00000 | 3420.00000 | 3425.00000 | 3432.00000 | 3440.00000 | 3450.00000 | 4.4 | ■ | | ■ | | ■ | | | |
| Hi-Q/ERC | 3411.20300 - 3411.20700 | 3416.20000 | 3420.20000 | 3425.20000 | 3432.20000 | 3440.20000 | - | 4.6 4.8 | | | ■ | ■ | ■ | | | |
| Hi-Q/ERB | - | 3416.30000 | 3420.30000 | 3425.30000 | 3432.30000 | 3440.30000 | 3450.30000 | 4.10 | | ■ | ■ | | ■ | | | |
| Hi-Q/ERBC | - | 3416.40000 | 3420.40000 | 3425.40000 | 3432.40000 | 3440.40000 | - | 4.10 | | ■ | ■ | ■ | ■ | | | |
| EP | 7112.11010 | 7112.16010 | 7112.20010 | - | - | - | - | 12.1 | | | | | | | | ■ |
| E | - | - | - | 7111.25000 | 7111.32000 | 7111.40000 | 7111.50000 | 12.1 | | | | | | | | ■ |

Recommended tightening torque on page 13.3/13.4.

8

| Collet | ER 11/ET1-12 | | ER 16/ET1-16 | | ER 20/ET1-20 | | ER 25/ET1-25 | | ER 32/ET1-32 | | ER 40/ET1-40 | | ER 50 | |
|--------|---------------------|------|---------------------|------|---------------------|------|---------------------|------|---------------------|------|---------------------|------|---------------------|------|
| | Clamping Range [mm] | Page | Clamping Range [mm] | Page | Clamping Range [mm] | Page | Clamping Range [mm] | Page | Clamping Range [mm] | Page | Clamping Range [mm] | Page | Clamping Range [mm] | Page |
| ER | 0.5–7.0 | 2.8 | 0.5–10.0 | 2.10 | 0.5–13.0 | 2.12 | 0.5–16.0 | 2.14 | 1.0–20.0 | 2.16 | 2.0–30.0 | 2.18 | 4.0–34.0 | 2.18 |
| ER-UP | 0.5–7.0 | 2.8 | 0.5–10.0 | 2.10 | 0.5–13.0 | 2.12 | 0.5–16.0 | 2.14 | 1.0–20.0 | 2.16 | 2.0–30.0 | 2.18 | 4.0–34.0 | 2.18 |
| ER-DM | - | - | 3.0–10.0 | - | 3.0–10.0 | 2.24 | 6.0–16.0 | 2.26 | 6.0–20.0 | 2.28 | - | - | - | - |
| ER-MB | 0.2–0.9 | 2.8 | 0.2–0.9 | 2.10 | - | - | - | - | - | - | - | - | - | - |
| ER-GB | 2.8–6.0 | 3.4 | 4.0–9.0 | 3.4 | 4.0–11.2 | 3.4 | 4.0–16.0 | 3.4 | 4.0–20.0 | 3.4 | 6.0–22.0 | 3.4 | 22.0–32.0 | 3.4 |
| ET 1* | 1.4–3.55 | 3.8 | 1.4–6.3 | 3.8 | 2.2–7.0 | 3.8 | 2.5–10.0 | 3.8 | 4.5–12.5 | 3.8 | 6.0–17.0 | 3.8 | - | - |

*Not for coolant through tools and not for applications with sealing disks.



REGO-FIX CAPTO | ER

ISO 26623

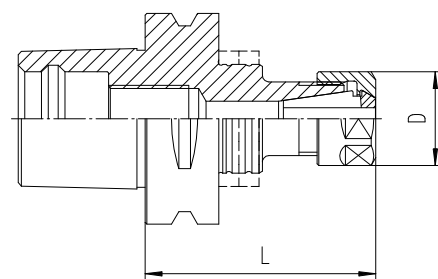
ER Colletholders | Balancing Rings

| Type | Part No. | D [mm] | L [mm] | Balancing Rings |
|--------------------|------------|--------|--------|-----------------|
| C6 / ER 16 x 070 H | 4806.11630 | 28 | 70 | FWR 325 |
| C6 / ER 16 x 100 H | 4806.11650 | 28 | 100 | FWR 325 |
| C6 / ER 16 x 150 H | 4806.11670 | 28 | 150 | FWR 325 |
| C6 / ER 20 x 060* | 2806.12020 | 34 | 60 | - |
| C6 / ER 25 x 060* | 2806.12520 | 42 | 60 | - |
| C6 / ER 25 x 100 H | 4806.12550 | 42 | 100 | FWR 405 |
| C6 / ER 25 x 130 H | 4806.12560 | 42 | 130 | FWR 405 |
| C6 / ER 32 x 060* | 2806.13220 | 50 | 60 | - |
| C6 / ER 32 x 070 H | 4806.13230 | 50 | 70 | FWR 405 |
| C6 / ER 32 x 100 H | 4806.13250 | 50 | 100 | FWR 505 |
| C6 / ER 40 x 065* | 2806.14020 | 63 | 65 | - |

| | | | | |
|-------------------|------------|----|----|---|
| C8 / ER 25 x 070* | 2808.12530 | 42 | 70 | - |
| C8 / ER 32 x 070* | 2808.13230 | 50 | 70 | - |
| C8 / ER 40 x 070* | 2808.14030 | 63 | 70 | - |
| C8 / ER 50 x 080* | 2808.15040 | 78 | 80 | - |

Supplied: Colletholder with Hi-Q® clamping nut.

*Not for use with balancing rings.



| Hi-Q® Balancing Rings | Part No. | Page |
|--------------------------|------------|------|
| Set FWR 225 | 7490.22500 | 12.9 |
| Set FWR 285 | 7490.28500 | 12.9 |
| Set FWR 325 | 7490.32500 | 12.9 |
| Set FWR 405 | 7490.40500 | 12.9 |
| Set FWR 505 | 7490.50500 | 12.9 |
| Torque screwdriver (TSD) | 7159.09000 | 12.9 |

Maximum rpm for Hi-Q® balancing rings see page 12.9.

Drawings with detailed dimensions see.

search.rego-fix.ch



Swiss
Precision
Tools

PG

powRgrip® Toolholders

Features | Benefits

Swiss Quality

Made in Switzerland to ISO 9001/ISO 14001.

1 Marking

Type and part number.

2 Traceability

Lot number marking on all products for traceability through the entire manufacturing process.

3 Original REGO-FIX®

Original only with the REGO-FIX® quality seal \triangle . Guarantee for best quality.

T.I.R. of the Whole System <3 μm

Highest clamping force and best runout in one.

Surface Finish max. Ra 0.25

Higher clamping force and higher transferable torque.

Q+® Balancing

100% balanced to G 2.5 @ 25'000 min⁻¹.
Ideal for High Speed Cutting (HSC) and High Performance Cutting (HPC).

Hi-Q® Balancing System

Ready to accept Hi-Q® balancing rings which allow to offset the imbalance introduced by the cutting tool up to 80'000 min⁻¹.

Minimal Outside Dimensions

Slim design provides more processing flexibility.

Fast

Tool clamping with hydraulic press in less than 10 seconds.

Excellent at Small Diameters

Clamping of small diameter tools from \varnothing 0.2 mm.

Presetable Tooling System

Repeatability <10 μm

ID Chip Hole

Per DIN 69873 with 10 mm diameter.





Certified by Sandvik

Information
ISO 26623

REGO-FIX CAPTO/PG Toolholder

Applications

These collets are designed for use on newest CNC-machining centers for High Performance Cutting (HPC) and High Speed Cutting (HSC). Thanks to their precision and positive locking in the machine spindle CAPTO/PG collets are suitable for highest requirements. The vibration dampening of CAPTO/PG collets reduce spindle wear and extend tool life.

Balancing

REGO-FIX® Q+® System CAPTO/PG collets are balanced to G 2.5 @ 25'000 min⁻¹. Type H collets are ready to accept Hi-Q® balancing rings which allow precision balancing of the system including cutting tool up to 80'000 min⁻¹ depending on the balancing rings used.

Coolant Through

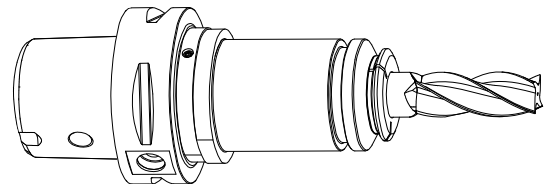
For use with coolant through tools.

Peripheral Cooling

PG-CF collets for peripheral cooling with non-coolant through tools.

Matched Tooling System for Best Fit

For highest precision and best results the whole system counts. Therefore REGO-FIX® components are carefully matched to fit together. This guarantees best run-out and balancing.





Swiss
Precision
Tools

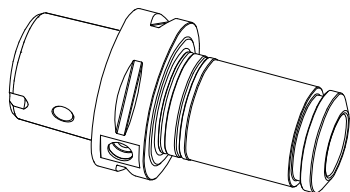
Matching Products

powRgrip® Collets

0.200 – 1.5875 mm powRgrip® microbore collets (PG 10-MB) see page 2.36.

| Ø [mm] | Ø [Inch] | Ø [Inch] | PG 10 Part No. | PG 10-CF Part No. | PG 15 Part No. | PG 15-CF Part No. | PG 25 Part No. | PG 25-CF Part No. | PG 32 Part No. | PG 32-CF Part No. |
|-----------|-------------|-------------|-------------------|----------------------|-------------------|----------------------|-------------------|----------------------|-------------------|----------------------|
| 2.000 | 0.0787 | - | 1710.02000 | - | - | - | - | - | - | - |
| 2.500 | 0.0984 | - | 1710.02500 | - | - | - | - | - | - | - |
| 3.000 | 0.1181 | - | 1710.03000 | 1710.03002 | 1715.03000 | 1715.03002 | 1725.03000 | 1725.03002 | - | - |
| 3.175 | 0.1250 | 1/8" | 1710.03181 | 1710.03183 | 1715.03181 | 1715.03183 | 1725.03181 | 1725.03183 | - | - |
| 3.500 | 0.1378 | - | 1710.03500 | - | 1715.03500 | - | 1725.03500 | - | - | - |
| 4.000 | 0.1575 | - | 1710.04000 | 1710.04002 | 1715.04000 | 1715.04002 | 1725.04000 | 1725.04002 | - | - |
| 4.500 | 0.1969 | - | 1710.04500 | - | 1715.04500 | - | 1725.04500 | - | - | - |
| 4.763 | 0.1875 | 3/16" | 1710.04761 | 1710.04763 | 1715.04761 | 1715.04763 | 1725.04761 | 1725.04763 | - | - |
| 5.000 | 0.1969 | - | 1710.05000 | 1710.05002 | 1715.05000 | 1715.05002 | 1725.05000 | 1725.05002 | - | - |
| 5.500 | 0.2165 | - | 1710.05500 | - | 1715.05500 | - | 1725.05500 | - | - | - |
| 6.000 | 0.2362 | - | 1710.06000 | 1710.06002 | 1715.06000 | 1715.06002 | 1725.06000 | 1725.06002 | 1732.06000 | 1732.06002 |
| 6.350 | 0.2500 | 1/4" | 1710.06351 | 1710.06353 | 1715.06351 | 1715.06353 | 1725.06351 | 1725.06353 | 1732.06351 | 1732.06353 |
| 7.000 | 0.2756 | - | - | - | 1715.07000 | 1715.07002 | 1725.07000 | 1725.07002 | 1732.07000 | 1732.07002 |
| 7.938 | 0.3125 | 5/16" | - | - | 1715.07941 | 1715.07943 | 1725.07941 | 1725.07943 | 1732.07941 | 1732.07943 |
| 8.000 | 0.3150 | - | - | - | 1715.08000 | 1715.08002 | 1725.08000 | 1725.08002 | 1732.08000 | 1732.08002 |
| 9.000 | 0.3543 | - | - | - | 1715.09000 | 1715.09002 | 1725.09000 | 1725.09002 | 1732.09000 | 1732.09002 |
| 9.525 | 0.3750 | 3/8" | - | - | 1715.09521 | 1715.09523 | 1725.09521 | 1725.09523 | 1732.09521 | 1732.09523 |
| 10.000 | 0.3937 | - | - | - | 1715.10000 | 1715.10002 | 1725.10000 | 1725.10002 | 1732.10000 | 1732.10002 |
| 11.000 | 0.4331 | - | - | - | - | - | 1725.11000 | 1725.11002 | 1732.11000 | 1732.11002 |
| 11.113 | 0.4375 | 7/16" | - | - | - | - | 1725.11111 | 1725.11113 | 1732.11111 | 1732.11113 |
| 12.000 | 0.4724 | - | - | - | - | - | 1725.12000 | 1725.12002 | 1732.12000 | 1732.12002 |
| 12.700 | 0.5000 | 1/2" | - | - | - | - | 1725.12701 | 1725.12703 | 1732.12701 | 1732.12703 |
| 13.000 | 0.5112 | - | - | - | - | - | 1725.13000 | 1725.13002 | - | - |
| 14.000 | 0.5512 | - | - | - | - | - | 1725.14000 | 1725.14002 | 1732.14000 | 1732.14002 |
| 14.288 | 0.5625 | 9/16" | - | - | - | - | 1725.14291 | 1725.14293 | 1732.14291 | 1732.14293 |
| 15.000 | 0.5906 | - | - | - | - | - | 1725.15000 | 1725.15002 | - | - |
| 15.875 | 0.6250 | 5/8" | - | - | - | - | 1725.15881 | 1725.15883 | 1732.15881 | 1732.15883 |
| 16.000 | 0.6300 | - | - | - | - | - | 1725.16000 | 1725.16002 | 1732.16000 | 1732.16002 |
| 18.000 | 0.7087 | - | - | - | - | - | 1725.18000 | 1725.18002 | 1732.18000 | 1732.18002 |
| 19.050 | 0.7500 | 3/4" | - | - | - | - | 1725.19051 | 1725.19053 | 1732.19051 | 1732.19053 |
| 20.000 | 0.7874 | - | - | - | - | - | 1725.20000 | 1725.20002 | 1732.20000 | 1732.20002 |
| 22.000 | 0.8661 | - | - | - | - | - | - | - | 1732.22000 | 1732.22002 |
| 22.225 | 0.8750 | 7/8" | - | - | - | - | - | - | 1732.22231 | 1732.22233 |
| 25.000 | 0.9843 | - | - | - | - | - | - | - | 1732.25000 | 1732.25002 |
| 25.400 | 1.0000 | 1" | - | - | - | - | - | - | 1732.25401 | 1732.25403 |

powRgrip® clamping units and further powRgrip® accessories see page 12.7/12.8.



REGO-FIX CAPTO | PG

ISO 26623

powRgrip® Colletholders | Balancing Rings

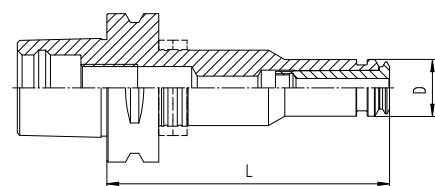
| Type | Part No. | D [mm] | L [mm] | Balancing Rings |
|-------------------|------------|--------|--------|-----------------|
| C3 / PG 10 x 055* | 2803.71010 | 16 | 55 | - |
| C3 / PG 15 x 067* | 2803.71520 | 24 | 67 | - |

| | | | | |
|--------------------|------------|----|----|---------|
| C4 / PG 10 x 060* | 2804.71020 | 16 | 60 | - |
| C4 / PG 10 x 080 H | 4804.71040 | 16 | 80 | FWR 225 |
| C4 / PG 15 x 062* | 2804.71520 | 24 | 62 | - |
| C4 / PG 15 x 080 H | 4804.71540 | 24 | 80 | FWR 285 |

| | | | | |
|--------------------|------------|----|-----|---------|
| C5 / PG 10 x 060* | 2805.71020 | 16 | 60 | - |
| C5 / PG 10 x 080 H | 4805.71040 | 16 | 80 | FWR 285 |
| C5 / PG 10 x 120 H | 4805.71060 | 16 | 120 | FWR 285 |
| C5 / PG 15 x 065* | 2805.71520 | 24 | 65 | - |
| C5 / PG 15 x 080 H | 4805.71540 | 24 | 80 | FWR 285 |
| C5 / PG 15 x 120 H | 4805.71560 | 24 | 120 | FWR 325 |
| C5 / PG 25 x 080* | 2805.72540 | 40 | 80 | - |
| C5 / PG 25 x 100 H | 4805.72550 | 40 | 100 | FWR 405 |

| | | | | |
|--------------------|------------|----|-----|---------|
| C6 / PG 10 x 080 H | 4806.71040 | 16 | 80 | FWR 325 |
| C6 / PG 10 x 120 H | 4806.71060 | 16 | 120 | FWR 325 |
| C6 / PG 10 x 160 H | 4806.71080 | 16 | 160 | FWR 325 |
| C6 / PG 15 x 080 H | 4806.71540 | 24 | 80 | FWR 325 |
| C6 / PG 15 x 120 H | 4806.71560 | 24 | 120 | FWR 325 |
| C6 / PG 15 x 160 H | 4806.71580 | 24 | 160 | FWR 325 |
| C6 / PG 25 x 085* | 2806.72540 | 40 | 85 | - |
| C6 / PG 25 x 100 H | 4806.72550 | 40 | 100 | FWR 405 |
| C6 / PG 25 x 120 H | 4806.72560 | 40 | 120 | FWR 405 |
| C6 / PG 25 x 160 H | 4806.72580 | 40 | 160 | FWR 405 |
| C6 / PG 32 x 090* | 2806.73240 | 50 | 90 | - |

| | | | | |
|-------------------|------------|----|----|---|
| C8 / PG 25 x 092* | 2808.72540 | 40 | 92 | - |
| C8 / PG 32 x 090* | 2808.73240 | 50 | 90 | - |

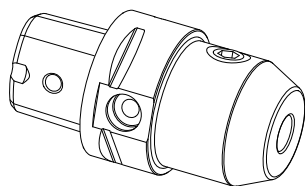


| Hi-Q® Balancing Rings | Part No. | Page |
|--------------------------|------------|------|
| Set FWR 225 | 7490.22500 | 12.9 |
| Set FWR 285 | 7490.28500 | 12.9 |
| Set FWR 325 | 7490.32500 | 12.9 |
| Set FWR 405 | 7490.40500 | 12.9 |
| Set FWR 505 | 7490.50500 | 12.9 |
| Torque screwdriver (TSD) | 7159.09000 | 12.9 |

Maximum rpm for Hi-Q® balancing rings see page 12.9.

Drawings with detailed dimensions see.

search.rego-fix.ch



REGO-FIX CAPTO | WD

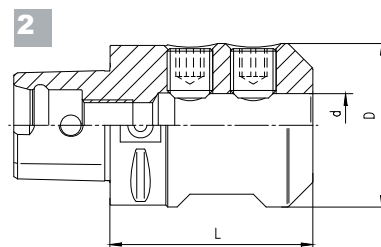
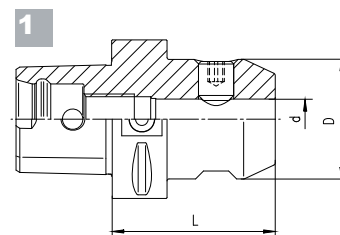
ISO 26623

End Mill Holders (WELDON)

| Type | Form Part No. | d [mm] | D1 [mm] | L [mm] | Drawing |
|------------------|---------------|--------|---------|--------|---------|
| C3 / WD 06 x 045 | 2803.30610 | 6 | 25 | 45 | 1 |
| C3 / WD 08 x 045 | 2803.30810 | 8 | 28 | 45 | 1 |
| C3 / WD 10 x 050 | 2803.31020 | 10 | 35 | 50 | 1 |
| C3 / WD 12 x 055 | 2803.31220 | 12 | 42 | 55 | 1 |
| C4 / WD 06 x 050 | 2804.30620 | 6 | 25 | 50 | 1 |
| C4 / WD 08 x 050 | 2804.30820 | 8 | 28 | 50 | 1 |
| C4 / WD 10 x 050 | 2804.31020 | 10 | 35 | 50 | 1 |
| C4 / WD 12 x 055 | 2804.31220 | 12 | 42 | 55 | 1 |
| C4 / WD 14 x 055 | 2804.31420 | 14 | 44 | 55 | 1 |
| C4 / WD 16 x 055 | 2804.31620 | 16 | 48 | 55 | 1 |
| C5 / WD 06 x 050 | 2805.30620 | 6 | 25 | 50 | 1 |
| C5 / WD 08 x 050 | 2805.30820 | 8 | 28 | 50 | 1 |
| C5 / WD 10 x 055 | 2805.31020 | 10 | 35 | 55 | 1 |
| C5 / WD 12 x 060 | 2805.31230 | 12 | 42 | 60 | 1 |
| C5 / WD 14 x 060 | 2805.31430 | 14 | 44 | 60 | 1 |
| C5 / WD 16 x 060 | 2805.31630 | 16 | 48 | 60 | 1 |
| C5 / WD 18 x 060 | 2805.31830 | 18 | 50 | 60 | 1 |
| C5 / WD 20 x 060 | 2805.32030 | 20 | 52 | 60 | 1 |
| C5 / WD 25 x 080 | 2805.32550 | 25 | 65 | 80 | 2 |
| C6 / WD 06 x 055 | 2806.30620 | 6 | 25 | 55 | 1 |
| C6 / WD 08 x 055 | 2806.30820 | 8 | 28 | 55 | 1 |
| C6 / WD 10 x 060 | 2806.31030 | 10 | 35 | 60 | 1 |
| C6 / WD 12 x 060 | 2806.31230 | 12 | 42 | 60 | 1 |
| C6 / WD 14 x 060 | 2806.31430 | 14 | 44 | 60 | 1 |
| C6 / WD 16 x 065 | 2806.31630 | 16 | 48 | 65 | 1 |
| C6 / WD 18 x 065 | 2806.31830 | 18 | 50 | 65 | 1 |
| C6 / WD 20 x 065 | 2806.32030 | 20 | 52 | 65 | 1 |
| C6 / WD 25 x 080 | 2806.32550 | 25 | 65 | 80 | 2 |
| C6 / WD 32 x 090 | 2806.33250 | 32 | 72 | 90 | 2 |
| C6 / WD 40 x 100 | 2806.34060 | 40 | 90 | 100 | 2 |

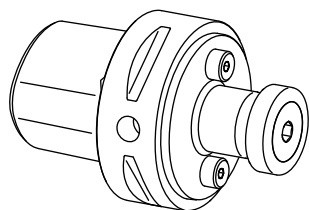
| Type | Form Part No. | d [mm] | D1 [mm] | L [mm] | Drawing |
|------------------|---------------|--------|---------|--------|---------|
| C8 / WD 06 x 070 | 2808.30640 | 6 | 25 | 70 | 1 |
| C8 / WD 08 x 070 | 2808.30840 | 8 | 28 | 70 | 1 |
| C8 / WD 10 x 070 | 2808.31040 | 10 | 35 | 70 | 1 |
| C8 / WD 12 x 070 | 2808.31240 | 12 | 42 | 70 | 1 |
| C8 / WD 14 x 070 | 2808.31440 | 14 | 44 | 70 | 1 |
| C8 / WD 16 x 070 | 2808.31640 | 16 | 48 | 70 | 1 |
| C8 / WD 18 x 070 | 2808.31840 | 18 | 50 | 70 | 1 |
| C8 / WD 20 x 070 | 2808.32040 | 20 | 52 | 70 | 1 |
| C8 / WD 25 x 080 | 2808.32550 | 25 | 65 | 80 | 2 |
| C8 / WD 32 x 080 | 2808.33250 | 32 | 72 | 80 | 2 |
| C8 / WD 40 x 110 | 2808.34060 | 40 | 90 | 110 | 2 |

Supplied with: End mill holder and lock screw.



Drawings with detailed dimensions see.

search.rego-fix.ch



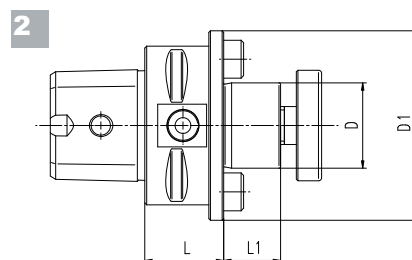
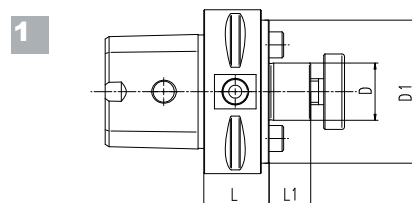
REGO-FIX CAPTO | MA

ISO 26623

Shell Mill Arbors

| Type | Part No. | D [mm] | D1 [mm] | L [mm] | L1 [mm] | Drawing |
|------------------|------------|--------|---------|--------|---------|---------|
| C3 / MA 16 x 030 | 2803.01610 | 16 | 36 | 30 | 11 | 2 |
| C4 / MA 16 x 032 | 2804.01610 | 16 | 36 | 32 | 11 | 1 |
| C4 / MA 16 x 055 | 2804.01620 | 16 | 36 | 55 | 11 | 1 |
| C4 / MA 22 x 025 | 2804.02210 | 22 | 48 | 25 | 16 | 2 |
| C4 / MA 22 x 055 | 2804.02220 | 22 | 48 | 55 | 16 | 2 |
| C5 / MA 16 x 035 | 2805.01610 | 16 | 36 | 35 | 11 | 1 |
| C5 / MA 16 x 070 | 2805.01640 | 16 | 36 | 70 | 11 | 1 |
| C5 / MA 22 x 025 | 2805.02210 | 22 | 50 | 25 | 16 | 1 |
| C5 / MA 22 x 070 | 2805.02240 | 22 | 48 | 70 | 16 | 1 |
| C5 / MA 27 x 025 | 2805.02710 | 27 | 56 | 25 | 18 | 2 |
| C5 / MA 32 x 040 | 2805.03210 | 32 | 65 | 40 | 20 | 2 |
| C6 / MA 16 x 040 | 2806.01610 | 16 | 36 | 40 | 11 | 1 |
| C6 / MA 22 x 025 | 2806.02210 | 22 | 55 | 25 | 16 | 1 |
| C6 / MA 27 x 025 | 2806.02710 | 27 | 63 | 25 | 18 | 1 |
| C6 / MA 32 x 025 | 2806.03210 | 32 | 65 | 25 | 20 | 2 |
| C6 / MA 40 x 040 | 2806.04010 | 40 | 80 | 40 | 23 | 2 |
| C8 / MA 16 x 050 | 2808.01620 | 16 | 36 | 50 | 11 | 1 |
| C8 / MA 22 x 030 | 2808.02210 | 22 | 55 | 30 | 16 | 1 |
| C8 / MA 27 x 030 | 2808.02710 | 27 | 65 | 30 | 18 | 1 |
| C8 / MA 32 x 030 | 2808.03210 | 32 | 80 | 30 | 20 | 1 |
| C8 / MA 40 x 030 | 2808.04010 | 40 | 80 | 30 | 23 | 1 |

Supplied with: Milling arbor with fixation screw.



8

Drawings with detailed dimensions see.

search.rego-fix.ch